

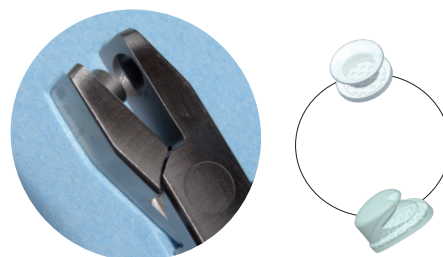
Allt för Aligners

Vi har ett heltäckande sortiment av tillbehör för alla typer av alignerbehandlingar



Sunset Strip™ för interproximal reduktion

Specialtänger för håltagning/justering



De-Tacher™ aligner-avlägsnare

Freddy™ keramiska attachments



Interproximala diamantborr



Chewies™



Mark VI™ mätnycklar

 **ORTOPRO**

Box 24067, 400 22 Göteborg
Tel 031-81 00 35

www.gestenco.com • info@ortopro.com

Rodneys aligner seater™

- The Rodney's Aligner Seater with rod helps aligner trays fit closer to the teeth to ensure it reaches its preset position and orthodontic force.
- The unique plastic rod is designed for easier control and holds the soft cylinder in place.
- The rod is more convenient and hygienic for the patient who no longer need to put their fingers in the mouth.
- The rod can be easily removed.
- Using Rodney's regularly will ensure a proper fit for the aligners. We recommend using Rodney's 3 to 5 times per day for about 2 to 3 minutes and each time a new aliner is used.
The goal is to ensure the aligners fit correctly and tightly with no gaps in between.
- Rodney's are helpful for teeth with less surface area, for example, teeth with smaller crowns.
- They are also helpful in locking in attachments to the aligners.
- Made of food class silicone.
- Comes in 4 different flavors, mint, lemon, watermelon and unscented.



Rodneys aligner seater	
Description	Part #
Mint scented	RAS-001
Lemon scented	RAS-002
Watermelon scented	RAS-003
Unscented	RAS-004

Extrusion Eyelet with chains and Caplin hook

- 24K Gold plated eyelet and chain reduces possibility of allergic reactions
- Low profile limits irritation
- Mesh base assures reliable bonding

Bond the extrusion eyelet to an impacted tooth, then engage traction force.

The bonding pads come in various sizes and shapes in order to fit the anatomy of all teeth and cases. The Caplin hook is also available in Stainless Steel without chain.



Extrusion Eyelet, ovoid base



Extrusion Eyelet, square base



Extrusion Eyelet, round base



Extrusion Caplin hook



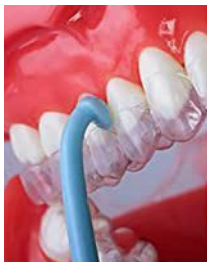
Citizen Caplin hook, Stainless Steel

Extrusion Eyelet w chain and Caplin hook	
Ovoid base w chain	EE-00-01
Round base w chain	EE-00-02
Square base w chain	EE-00-03
Caplin hook w chain	EE-00-04
Citizen Caplin hook	CIB-00-03

Plucker Aligner Remover™

The Plucker aligner remover is intended to be used as an accessory to orthodontic aligners with the purpose to facilitate proper and easy removal.

- Rounded head to prevent damage to the mouth's soft tissue.
- Ergonomic design - easy to hold ring handle. Handle extension made to provide a force point to the fingers holding the device.
- Made of Polypropylene (PP)
- Colour blue



Plucker aligner remover	
Description	Part #
Aligner remover, blue	PAR-00-01

