

NEXT-XPO

T3

PARTS CATALOGUE

ENTIRE PARTS SPECIFICATION



T3
SYSTEMS



CONTENTS

1. T3 FRAME

Profiles - 02

Extrusions - 04

Components - 06

Accessories - 08

Feet -10

Bags and Cases - 11

Tops and Shelves- 12

Doors - 13

Lighting and TV Mounts - 14

Tapes - 15

2. T3 WANDLITE

Components - 18

Accessories - 19

3. T3 LITEBOX

Components - 22

4. T3 AFFINITY

Profiles and Extrusions - 24

Components - 25

Brackets and Clamps - 28

Holdings and Shelves - 29

Lighting and Cases - 30

T3 SYSTEMS

WHY US

Our core company principle is

Twist – Lock – Connect

All products designed and manufactured by T3 Systems are tool free solutions. Allowing our users to create hassle free displays using our patented twist and lock assembly method.

Modular display companies, exhibition, display and interior contractors around the world are partnering with T3 systems to build eye-catching and innovative stands, back-drops, conference sets, shop interiors, counters, towers and displays in a fraction of the time it takes to build them using conventional methods.



We offer a lifetime guarantee on all our products, ensuring that we provide our users with the best quality products for all their display requirements.

PROUD REPRESENTATIVES OF





T3

FRAME

DETAILS

The T3 Frame system is the original framing product to ever be created in the T3 product range. Its patented modular, twist lock assembly allows for it to be one of the most versatile and innovative display frameworks in the world. It enables its users to assemble complex designs and displays in a fraction of the time of other systems and requires no tools or levers with which to do it.



NO-TOOLS



MODULAR COMPONENTS



EASY TO TRANSPORT



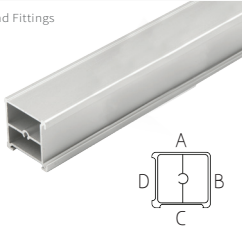
FAST BUILD TIMES

T3 FRAME - PROFILES

FNTO / FNTO3000

Fusion Tube (Custom / Stock length)

No End Fittings

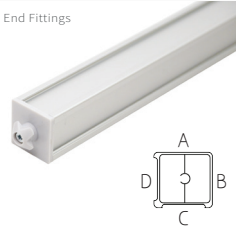


Custom Length from 16mm to 3000mm
 Stock Length 3000mm
 Weight 633g per metre / 1900g Stock
 Pack Quantity 1

FNT

Fusion Tube Custom

With End Fittings



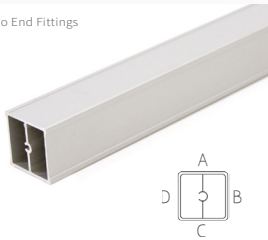
Length: 20mm to 3000mm
 Weight: Custom*

Please contact for specific lengths and weights according to your order

AFTO / AFTO3000

Airframe Tube (Custom / Stock length)

No End Fittings

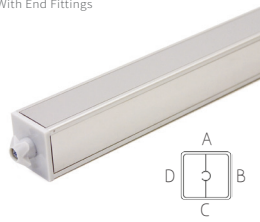


Custom Length from 16mm to 3000mm
 Stock Length 3000mm
 Weight 633g per metre / 1900g Stock
 Pack Quantity 1

AFT

Airframe Tube Custom

With End Fittings



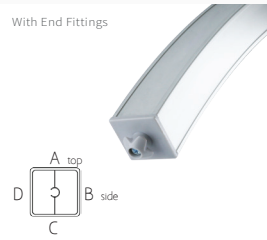
Length: 20mm - 3000mm
 Weight: Custom*

Please contact for specific lengths & weights according to your order.

AFC

Airframe Curve Custom

With End Fittings



Length: 490c/c - 1960c/c
 Weight: Custom*

Please contact for specific lengths & weights according to your order.

CHTO / CHTO3000

Channel Tube (Custom / Stock length)

No End Fittings



Custom Length from 16mm to 3000mm
 Stock Length 3000mm
 Weight 633g per metre / 1900g Stock
 Pack Quantity 1

CHT

Channel Tube Custom

With End Fittings



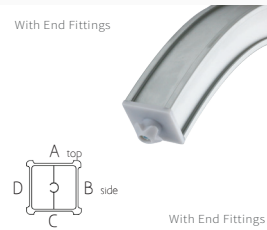
Length: 20mm to 3000mm
 Weight: Custom*

Please contact for specific lengths and weights according to your order

CHC

Channel Curve Custom

With End Fittings



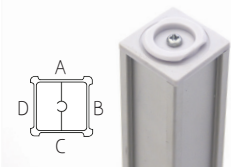
Length: 490c/c - 1960c/c
 Weight: Custom*

Please contact for specific lengths and weights according to your order

CHTL

Channel Tube Twist Lock Custom

With End Fittings



Length: 20mm - 1750mm
 Weight: Custom*

Please contact for specific lengths & weights according to your order

T3 FRAME - PROFILES

UCTO / UCT

Ultralite Channel tube (Custom / Stock length)



No End Fittings

Custom Length from 20mm to 2200mm
 Stock Length 2200mm
 Weight 0270g per metre / 812g Stock
 Pack Quantity 1

UCT

Ultralite Channel Tube Custom

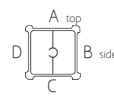


With End Fittings

Length: 20mm - 2200mm
 Weight: 369g per metre
 Please contact for specific lengths & weights according to your order.

UCT0567/90°

Ultralite Channel Curve

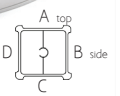
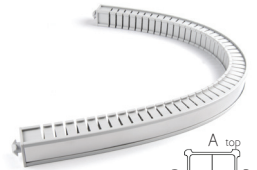


With End Fittings

Length: 567c/c - 600ø (90° only)
 Weight: 0146g
 Profile comes in ONE SIZE ONLY (567mm c/c -600mm Outside diameter cut at 90°)

UFXC

Ultralite Flexi- Tube Custom



With End Fittings

Length: 0400mm - 1000mm
 Weight: Custom*
 Please contact for specific lengths and weights according to your order (Side B only*)

UFTO / UFT

Ultralite Fusion tube (Custom / Stock length)



No End Fittings

Custom Length from 20mm to 2200mm
 Stock Length 2200mm
 Weight 0270g per metre / 812g Stock
 Pack Quantity 1

UFT

Ultralite Fusion Tube Custom



With End Fittings

Length: 20mm - 2200mm
 Weight: 369g per metre
 Please contact for specific lengths & weights according to your order.

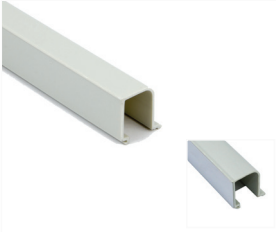


T3
 S Y S T E M S

T3 FRAME - EXTRUSIONS

CHMUC / CHMUC2200

Channel Multiuse Insert (Custom / Stock length)



Custom Length from 20mm to 2400mm
 Stock Length 2400mm
 Weight 0270g per metre / 0675g Stock
 Pack Quantity 1
 (Please specify with Steel, Velcro or Plain)

CHPDI / CHPDI2400

Channel Panel Dual Insert (Custom / Stock length)



Custom Length from 16mm to 2400mm
 Stock Length 2400mm
 Weight 0156g per metre / 0390g Stock
 Pack Quantity 1

CHPSC / CHPS2200

Channel Panel Shelf-Insert (Custom/Stock length)



Custom Length from 20mm to 2200mm
 Stock Length 2200mm
 Weight 0240g per metre / 0600g Stock
 Pack Quantity 1

CHDIC / CHDI2200

Channel Decor Insert (Custom / Stock length)



Custom Length from 20mm to 2200mm
 Stock Length 2200mm
 Weight 0132g per metre / 330g Stock
 Pack Quantity 1
 Please contact for Plain, Velcro or Steel option.

CHFCC / CHFCC2200

Channel Fabric Comb (stock length)



Custom Length from 20mm to 2400mm
 Stock Length 2400mm
 Weight 0145g per metre / 362.5g Stock
 Pack Quantity 1

CHFSC / CHFSC2200

Channel Fabric Silverlite (Custom/Stock length)



Custom Length from 20mm to 2200mm
 Stock Length 2200mm
 Weight 0132g per metre / 0330 g Stock
 Pack Quantity 1

CHFS45°C / CHFS45°2200

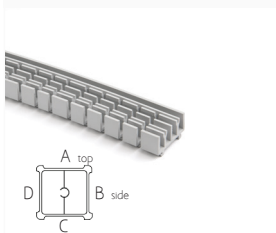
Channel Fabric Silverlite 45° (Custom/Stock length)



Custom Length from 20mm to 2400mm
 Stock Length 2400mm
 Weight 0110g per metre / 0275g Stock
 Pack Quantity 1

CHFCC

Channel Fabric Comb Custom Flexible

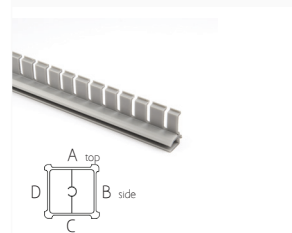


Weight: 95g
 Max Size: 1200mm

Comb is cut ('fracked') to allow for profile to bend into custom curves requiring tighter degree of angle. Minimum diameter restriction applies*

CHFSF

Channel Insert Silverlite Custom Flexible

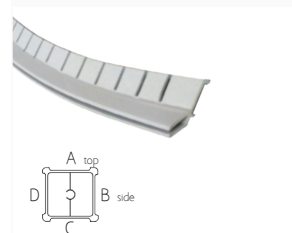


Weight: 95g
 Max Size: 1200mm

Silverlite is cut ('fracked') to allow for profile to bend into custom curves requiring tighter degree of angle. Minimum diameter restriction applies*

CHFS45°F

Channel Insert 45° Silverlite Custom Flexible



Weight: 95g
 Max Size: 1200mm

Silverlite is cut ('fracked') to allow for profile to bend into custom curves requiring tighter degree of angle. Minimum diameter restriction applies*

T3 FRAME - EXTRUSIONS

CHSDDI / CHSDDI2400

Sliding double door insert (Custom / Stock length)



Custom Length	from 16mm to 2400mm
Stock Length	2400mm
Weight	0153g per metre / 0382g Stock
Pack Quantity	1

CHWPI / CHWPI2400

Channel Wall Panel Insert (Custom / Stock length)



19mm internal width

Custom Length	from 16mm to 2400mm
Stock Length	2400mm
Weight	0130g per metre / 0325g Stock
Pack Quantity	1

CHSBIC / CHSBI2400

Channel Bracket Shelf Insert (Custom/Stock length)



Custom Length	from 20mm to 2400mm
Stock Length	2400mm
Weight	0237g per metre / 592.5g Stock
Pack Quantity	1

G-EX

Graphic L angle (available in various sizes below)

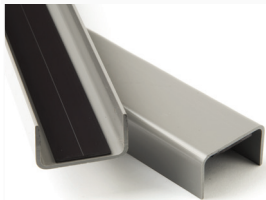


Size	Length	Weight	Code
25 x 25	16 x 3000	-	G25EX
25 x 12	16 x 3000	139g pr m	G20EX
12 x 25	16 x 3000	110g pr m	G12EX

Please contact for specific Customizations

EDGUP / EDGUP2400

'U' Plastic edging (Custom / Stock length)

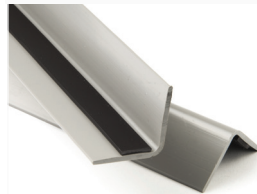


with mag tape*

Custom Length	from 10mm to 3000mm
Stock Length	3000mm
Weight	0295g per metre / 0885g Stock
Pack Quantity	1

EDGLP / EDGLP2400

'L' Plastic edging (Custom / Stock length)

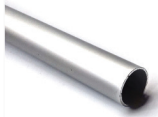


with mag tape*

Custom Length	from 10mm to 3000mm
Stock Length	3000mm
Weight	0372g per metre / 1116g Stock
Pack Quantity	1

CHTR2400 / CHTRC

Channel Rail Tube (25mm Diameter)



Length:	up to 2400mm
Weight:	287g

Please contact for specific lengths & weights according to your order

T3 FRAME - COMPONENTS

CON

Connector



Weight 23g No. quantity per pack 1
Colors Available* Minimum order applies*

CON 2

Double connector



Weight: 63g
Pack Quantity: 1

CAP / CAPCH

Connector Cap (Plain / Chrome)



*also available in CHROME

Weight: 3g
Pack Quantity: 1
Please specify color upon order*

CONTE-19mm

Tube Extender (19mm)



Weight: 19g
Pack Quantity: 1

AFEFS

Airframe end fitting (Bayonet)



With Screw*

Weight 7g No. quantity per pack 1
Colors Available* Minimum order applies*
(Rating - ULV_0- Poly C)

CHEFS

Channel end fitting (Bayonet)



With Screw*

Weight 7g No. quantity per pack 1
Colors Available* Minimum order applies*
(Rating - ULV_0- Poly C)

FNEFS

Fusion end fitting (Bayonet)



With Screw*

Weight 7g No. quantity per pack 1
Colors Available* Minimum order applies*
(Rating - ULV_0- Poly C)

CHTLEF

Channel Twist lock End Fitting

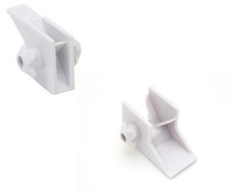


With Screw*

Weight: 5g
Pack Quantity: 1

DJ14 / DJ30

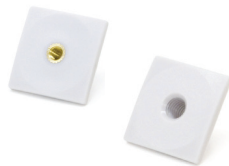
Double joiner - 14mm



DJ14mm - Weight: 14g
DJ30mm - Weight: 16.4g
Pack Quantity: 1

TFM5/TFM8

Threaded Fitted Bayonet For connector (M5/8)



Weight: M5-6g / M8-5g
Pack Quantity: 1
M5 Bayonet fitted with Brass Thread
M8 Bayonet fitted with Thread*

HNG

Hinge



Weight: 14g
Pack Quantity: 1

AFANG

Airframe Angled fitting



Airframe angles range from 15° -75°
Pack Quantity: 1

Please contact for Custom Angle requirements*

T3 FRAME - COMPONENTS

CHSSA

Channel shelf support Adjustable



Weight: 33g
Pack Quantity: 1

CHSSA M8

M8 Channel shelf support ADJ



Weight: 51g
Pack Quantity: 1

CHSSF

Channel shelf support fixed



Weight: 10g
Pack Quantity: 1

CHSST

Channel shelf support twist in



Weight: 4g
Pack Quantity: 1

CHBR5

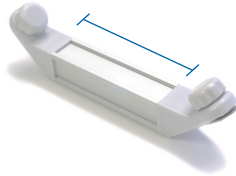
Channel brace show only



Weight: 42g
Pack Quantity: 1

CHBRC

Channel Brace Custom



Length: 40mm to 2200mm
Weight: Custom*
Pack Quantity: 1

CHCRHK

Channel hook insert for rail



Weight: 14g
Pack Quantity: 2

CHSB15-30

Shelf bracket



Size	Length	Weight	Code
15	150 x 70	050g	B15
20	200 x 70	068g	B20
25	250 x 70	108g	B25
30	300 x 70	137g	B30

SCLMPX

Support clamp flat X



Weight: 326g
Pack Quantity: 1

SCLMPI / SLMPIX

Support clamp flat / Extended



Weight: 170g
Pack Quantity: 1

SCLMPT

Support clamp flat T



Weight: 248g
Pack Quantity: 1

SCLMPC

Support clamp corner L



Weight: 152g
Pack Quantity: 1

T3 FRAME - ACCESSORIES

SHCLMP

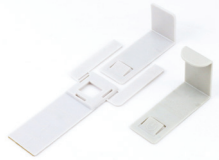
T3 Shell clamp



Weight: 92g
Pack Quantity: 1

GHP

Graphic hangers (pair)



Weight: 18g
Pack Quantity: 2

CABT

Cable access tidy



Weight: 20g
Pack Quantity: 1

CHSPID

Channel Decor Insert Spacer 10mm



Stock Length 010mm
Weight 0010g
Quantity x2 per tube-
Please contact for Plain, Velcro or Steel option.

RIN - 06/-08/-10

Rivet Tube inserts (M Self Fit only*)



Self Fit only*

M4 02g
M6 05g
M8 07g
M10 05g
Pack Quantity 1

Please contact for Customization of inserts*

AFSEB/G

Stop End (Airframe Only)*

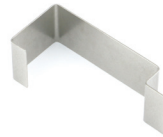


*available in grey or black

Weight: 6g
Pack Quantity: 1
Specify Colour upon order*

TCLMP

Tube Clamp (Steel Sprung)



Weight: 30g
Pack Quantity: 1

RTM

Rotating Tube Mount



*available without cradle

Weight: 4122g
Pack Quantity: 1

RTC

Rotating Tube Cradle



*available without mount

Weight: 369g
Pack Quantity: 1

CHRTEF

Channel Rail End Fitting (For CHRT 25mm)



Weight: 82g
Pack Quantity: 1

CHRTHK

Rail Suspension Hook (Pair)



Weight: 035g
Pack Quantity: 2

T3 FRAME - ACCESSORIES

CHFIC

Channel fabric infill corner



Weight: 9g
Pack Quantity: 1

CHFIT

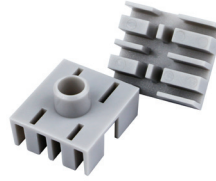
Channel fabric infill T



Weight: 10g
Pack Quantity: 1

CHFIW

Channel fabric infill wrap



Weight: 9g
Pack Quantity: 1

CHFIX

Channel fabric infill cross



Weight: 10g
Pack Quantity: 1

CHFS45°A / CHFS45°B

Silverlite 45° Insert A (right) B (Left)



Weight: 8g
Pack Quantity: 1

CHFS45°C

Silverlite 45° Insert C



Weight: 9g
Pack Quantity: 1

CHFS45°E

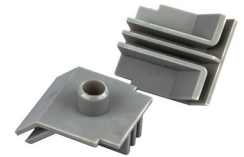
Silverlite 45° Edge



Weight: 6g
Pack Quantity: 1

CHFS45°T

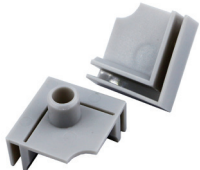
Silverlite 45° Insert T



Weight: 9g
Pack Quantity: 1

CHFSIC

Fabric silverlite infill corner



Weight: 8g
Pack Quantity: 1

CHFS

Fabric silverlite infill edge



Weight: 6g
Pack Quantity: 1

CHFSII

Fabric silverlite infill internal



Weight: 4g
Pack Quantity: 1

CHWPIE

Wall panel insert



Weight: 4g
Pack Quantity: 1

T3 FRAME - FEET

FA25S/SS

Foot ADJ 25 Static / Stud Only (M8)



*quantity x1 each

Description	Weight	Code
25 mm Static	21g	FA25T
25 mm Stud Only	16g	FA25TS

FA25T/TS

Foot ADJ 25 Tiltglide Static / Stud Only (M8)



*quantity x1 each

Description	Weight	Code
25 mm tiltglide Static	26g	FA25T
25 mm Stud only	22g	FA25TS

FA38S/SS

Foot ADJ 38mm Static / Stud Only (M8)



*quantity x1 each

Description	Weight	Code
38 mm Static	24g	FA38S
38 mm Stud Only	19g	FA38SS

FA40T/TS

Foot ADJ 40 Tiltglide Static / Stud Only (M8)



*quantity x1 each

Description	Weight	Code
40 mm tiltglide Static	33g	FA40T
40 mm tiltglide Stud Only	28g	FA40TS

FA55T/TS

Foot ADJ 55 Tiltglide Static / Stud Only (M8)



*quantity x1 each

Description	Weight	Code
55 mm tiltglide Static	41g	FA55T
55 mm tiltglide Stud Only	35g	FA55TS

FA38s-EXT

Foot ADJ 38mm Extended Static / Stud Only (M8)



*quantity x1 each

Description	Weight	Code
38 mm EXT Static	28g	FA38SEXT
38 mm EXT Stud Only	23g	FA38SSEXT

FWB50/S

50mm Wheel with brake Static / Stud Only (M8)



*quantity x1 each

Description	Weight	Code
Wheel w/ bayonet	100g	FWB50
Wheel M8stud only	96g	FWB50S

FWN50/S

50mm Wheel Unbraked Static / Stud Only (M8)



*quantity x1 each

Description	Weight	Code
Wheel w/ bayonet	101g	FWN50
Wheel M8stud only	97g	FWN50S

FA70SS

Foot ADJ 70mm Static Stud Only (M10)



Weight:	43g
Pack Quantity:	1
Diameter:	70mm

FF01 / FF02

Foot flat single / Double



*quantity x1 each

Description	Weight	Code
Foot flat single	189g	FWB50
Foot flat double	261g	FWB50S

ESP

End side plate



*With Fasten Wheels

Weight:	744g
Pack Quantity:	1

*Requires Tin08 x2 on Airframe profile per plate

T3 FRAME - BAGS AND CASES

CBS

Carry bag small



Internal size: 340wx220dx350h - mm
Weight: 9g
Capacity: 360 connectors
Pack Quantity: 1

CBM

Carry bag medium



Internal size: 1050wx210dx210h - mm
Weight: 1kg
Capacity: 36 x 980c/c tubes
Pack Quantity: 1

CBL

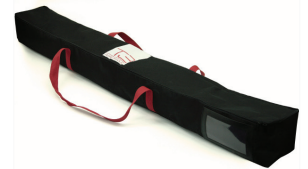
Carry bag large



Internal size: 1300wx210dx170h - mm
Weight: 1.5kg
Capacity: 30 x 1250c/c tubes
Pack Quantity: 1

CBEX

Carry bag extra large



Internal size: 1550wx170dx170h - mm
Weight: 2kg
Capacity: 25 x 1450c/c tubes
Pack Quantity: 1

CCL

Large wheeled case



Internal size: 345wx325dx1265l - mm
Weight: 8.5kg
Capacity: 90 tubes- 1260mmc/c
Pack Quantity: 1

CCM

Medium case



Internal size: 290wx250dx960h - mm
Weight: 4.4kg
Capacity: 56 tubes - 951 mm c/c
Pack Quantity: 1

CGD

Circular graphics drum



Internal size: 350 Ø x 980h - mm
Weight: 4.6kg
Capacity: up to 15m graphic panels
Pack Quantity: 1

CGB

Circular Graphics Bag



Internal size: 350 Ø x980h
Weight: 1.6kg
Capacity: up to 15m graphic panels
Pack Quantity: 1

CBW

Carry Bag Wheeled



Internal size: 345wx325dx1265l - mm
Weight: 8.5kg
Capacity: 90 tubes- 1260mmc/c
Pack Quantity: 1

ULMB / ULLB

Ultralite Medium / Large bag



Internal size: 760wx180dx760l - mm (ULMB)
Internal size: 1010wx180dx760l - mm (ULLB)
Weight: 1.3kg (ULMB) / 1.6kg (ULLB)
Capacity: *Designed for ultralite standards
Pack Quantity: 1

ULGD

Ultralite graphics drum



Internal size: 250 Ø x 1010l - mm
Weight: 1.3kg
Capacity: *Designed for ultralite
Pack Quantity: 1

FCL

Flight case

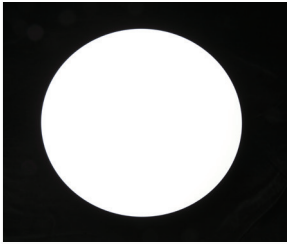


Internal size: 1300wx425dx425l - mm
Extranl size: 1345wx470dx470h - mm
Weight: 22kg
Pack Quantity: 1

T3 FRAME - ULTRALITE

ULST301

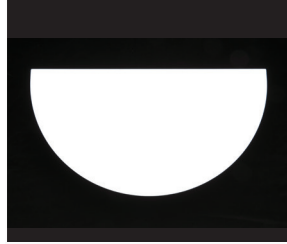
Ultralite top Circle



Dimensions: 628mmØ
Pack quantity: 1
Weight: 1400g

ULST302

Ultralite top Semi-circle



Dimensions: 628mmØ
Pack quantity: 1
Weight: 750g

ULST303

Ultralite top Square



Dimensions: 628mm x 628mm
Pack quantity: 1
Weight: 1500g

ULST304

Ultralite top Oblong



Dimensions: 628mm x 778mm
Pack quantity: 1
Weight: 1750g

ULST401

Ultralite shelf Circle



Dimensions: 628mm
Pack quantity: 1
Weight: 698g

ULST402

Ultralite shelf Semi-circle



Dimensions: 31mm
Pack quantity: 1
Weight: 357g

ULST403

Ultralite shelf Square



Dimensions: 628mm x 628mm
Pack quantity: 1
Weight: 888g

ULST404

Ultralite shelf Oblong



Dimensions: 778mm x 595mm
Pack quantity: 1
Weight: 1121g

ULP101

Ultralite Plinth Circle



Dimensions: 628mm
Pack quantity: 1
Weight: 698g

ULP102

Ultralite Plinth Semi-circle



Dimensions: 31mm
Pack quantity: 1
Weight: 357g

ULP103

Ultralite Plinth Square



Dimensions: 628mm x 628mm
Pack quantity: 1
Weight: 888g

ULP104

Ultralite Plinth Oblong



Dimensions: 778mm x 595mm
Pack quantity: 1
Weight: 1121g

T3 FRAME - DOORS & ACCESSORIES

AFDSF/FNDSF/CHDSF 0735

Standard door (Airframe / Fusion / Channel)



Requires DSB* 735MM DENOTES WIDTH C/C*

FNDFF/CHDFF 0735

Fabric Standard Door (Fusion/Channel)



AVAILABLE IN PERIMETER ONLY OR DOOR ONLY OPTIONS*

AFDHF/FNDFH/CHDHF0735

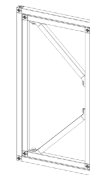
Halfdoor (Airframe / Fusion / Channel)



Requires DSB* 735MM DENOTES WIDTH C/C*

AFDC/FNDC/CHDC 0490

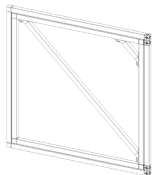
Cupboard door (Fusion/Airframe/Channel)



Requires DSB* 735MM DENOTES WIDTH C/C*

AFDC/FNDC/CHDC 0735

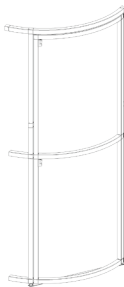
Cupboard Door (Airframe / Fusion / Channel)



Requires DSB* 735MM DENOTES WIDTH C/C*

AFDSC/CHDSC

Custom Curved Door (Airframe / Channel)



735/980 DSB TANGENT RESTRICTION APPLIES*

Size	Height	Kg	Fusion	Airframe	Channel
CUPBOARD DOOR W490mm C/C	980mm c/c	5KG	FNDC0490	AFDC0490	CHDC0490
CUPBOARD DOOR W735mm C/C	980mm c/c	5.3KG	FNDC0735	AFDC0735	CHDC0735
HALF DOOR W735mm C/C	-	5.5KG	FNDHF0735	AFDHF0735	CHDHF0735
STANDARD DOOR W735mm C/C	1960mm c/c	11KG	FNDSF735	AFDSF735	CHDSF735
FABRIC DOOR W735mm C/C	1960mm c/c	12KG	FNDFF735	-	CHDFF735
CURVED DR CSTM (490-12000Ø)	-	-	-	AFDSC	CFDSC

DOORS AVAILABLE WITH CUSTOM EXTRUSIONS (AIRFRAME TUBE ON ALL LOCKED DOORS)

DSL

Door lock only



Weight: 87g
Pack Quantity: 1

DSK

Door key only



Weight: 12g
Pack Quantity: 1

DSHM

Door hinge metal



Weight: 140g
Pack Quantity: 1

DSB 735 / 980

Doorbar complete with feet



*includes x2 - 25mmStatic feet (FA25-S)

Description	Weight	Code
735mm c/c	1002g	DSB0735
980mm c/c	1309g	DSB0980

*quantity x1 each

T3 KITS

If you want to know more about T3 Frame, why not order one of our T3 Kits. It will allow you to get a hands on feel for the modular framework system that is changing the industry. The kit provides a simple yet comprehensive understanding of how our patented Twist – Lock assembly system works as well as introducing some of the main components.

TSK

T3 SAMPLE KIT



Weight:
Pack quantity:
(frame only weight)*

1100g
1

TDK

T3 DEMO KIT



Weight:
Pack quantity:
(frame only weight)*

2800g
1



T3 FRAME - TV MOUNTS & TAPES

MSH

Monitor support hooks



*includes vesa fittings

Weight: 802g
Pack quantity: 1

MSB

Monitor support bracket

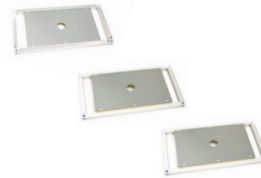


*includes vesa fittings

Weight: 1149g
Pack quantity: 1

AFSM / CHSM / FNSM

Screen Mount



*Plasma screen bracket screwed to wooden board

Channel options protrude from mount by 14mm

Size	Channel	Airframe	Fusion
Custom	CHSMC	AFSMC	FNSMC
612.5mm c/c	CHSM0612.5	AGSM0612.5	FNSM0612.5
735mm c/c	CHSM0735	AFSM0735	FNSM0735
867mm c/c	CHSM0867.5	AFSM0867.5	FNSM0867.5
980mm c/c	CHSM0980	AFSM0980	FNSM0980

THB

High bond double sided tape



Size	Weight	Code
12mm x 50m	179g	THB12
22mm x 50m	336g	THB22
25mm x 50m	374g	THB25

TSR

Steel tape



Size	Weight	Code
22mm x 147m	11kg	TSR22
25mm x 147m	12kg	TSR22

TSHB

Steel & high bond double sided tape



Size	Weight	Code
22mm x 147m	76g	TSHB22
25mm x 147m	86g	TSHB25

TV12 / 24MM

Velcro tape

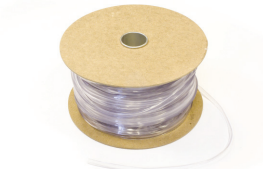


*roll size 25m, available in both Black or White

Type	Colour	Weight	Code
Hook	12mm	315g	TV12HK
Loop	12mm	184g	TV12LP
Hook	24mm	504g	TV25HK
Loop	24mm	363g	TV25LP

CHFGE

Channel fabric edging



*175 metres per roll

Weight: 7.4kg
Pack Quantity: 1

TMR

Magnetic tape



Size	Weight	Code
12.5mm x 30m	2072g	TMR12.5
25 x 30m	4050g	TMR25

T3 FRAME - LIGHTING

SPLBLK

LED spotlight - black - 100w



*includes clamp

Weight: 400g
Pack quantity: 1

Available with UK / US & EU Plugs*

SPLCHR

LED spotlight - chrome - 100w



*includes clamp

Weight: 396g
Pack quantity: 1

Available with UK / US & EU Plugs*

SPCLAMP

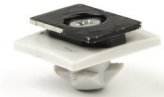
Spotlight clamp



Item	Weight	Code
Clamp	52g	SPLSLV

SPCAD

Spotlight adaptor



Weight: 23g
Pack quantity: 1

T3

WANDLITE

DETAILS

The T3 Wandlite is a revolutionary 360° LED tube light. With its patented lightweight and almost unbreakable design it is one of the most versatile lights available in the display and exhibition industry. With its variety of accessories it can be used to illuminate virtually any display and exhibition structure.



360° ILLUMINATION



ECO-FREINDLY



WATERPROOF



LOW VOLTAGE

T3 WANDLITE

T3W

T3 Wandlite LED tube Light - High Bright



*available in RGB colours

Sizes:

T3W0490H (0367mm)
T3W0857H (0367mm)
T3W1225H (0367mm)
T3W1960H (0367mm)

T3W0612H (0367mm)
T3W0980H (0367mm)
T3W13470H (0367mm)

T3W0735H (0367mm)
T3W1102H (0367mm)
T3W1470 (0367mm)
Custom Sizes available, minimum order applies*

WLCSH

Suspension hanger



Weight: 4.2g
Pack quantity: 1

WLCFC

Fixing clip



Weight: 8g
Pack quantity: 1

WLFS

Splitter flex



Weight: 31g
Pack quantity: 1

WLFL

Link Flex



Weight: 11g
Pack quantity: 1

WLT 2/5/8

Transformer (avail in UK/US/EU)



Voltage:	Weight:	Code:	Amp:
100-240V	341g	WLT 2	2
100-240V	432g	WLT 5	5
100-240V	549g	WLT 8	8

WLTA

Adaptor 12mm to 14mm



Weight: 6g
Pack quantity: 1

WLT2S

Splitter Lead for Transformer (UK only)*



*UK only

Weight: 373g
Pack quantity: 1

WLTEX

Extension lead for Transformer (UK only)*



3000mm long

Weight: 250g
Pack quantity: 1

WLHKD040 / 100

*C Hook 040mm / Double end 100mm



Weight 040mm	02g
Weight 100mm	04g
Pack Quantity:	1

WLHKS100

WLHK100/ CHSST / WLSCX (x1 each)*



Weight 040mm	90g
Weight 100mm	130g
Pack Quantity:	1

T3 WANDLITE

WLSLB

Stick light bracket



*Available in custom sizes

Size	Weight	Code
245c/c	59g	SLB0245
367.5c/c	90g	SLB0367.5
490c/c	100g	SLB0490
735c/c	131g	SLB0735
CUSTOM	as per order	SLBCSTM

WLZ

Z stand



Weight: 916g
Pack quantity: 1

SLBH

Stick light bracket hook on



Weight: 36g
Pack quantity: 1

SLC

Stick light clip replacement



Weight: 35g
Pack quantity: 1

WLRGBC

RGB ONE



Weight: 22g
Pack quantity: 1

*T3 WANDLITE HAS A BROAD RANGE OF POWERING SOLUTIONS FOR OFF-GRID PROJECTS. **CONTACT US TODAY TO FIND OUT MORE DETAILS.***

T3 WANDLITE - PRODUCT SPECIFICATION

0980 Wandlite - Single unit Specification	
Brightness	1713 Lumen Approx
Power consumption	22.5W
DC power input	12V 1.5A
Fuse	5A resettable
Operating temperature	25°C
Operating humidity	40-90%
Diameter	39mm
Length	1000mm
Weight of Wandlite	272g
IP Rating	IP65
Kelvin Rating	6000
Flammability Rating	UL94 V-0



BATTERY PACK



SOLAR PANELS



POWER CORD



CIGARETTE SOCKET





T3

LITEBOX

DETAILS

T3 Litebox, at the forefront of visual and product displays. Using the patented Twist Lock assembly method synonymous with T3, it's modular design allows for it to be built in a matter of minutes and packed into one of our compact, wheeled travel cases easily. It provides all the design and display potential without any of the hassle.



LED ILLUMINATION



PACKED INTO TRAVEL BAGS



CUSTOMIZABLE



LOW VOLTAGE

T3 LITEBOX - COMPONENTS

CHLB3000

Channel fabric litebox 3000



Length: 3000mm
Weight: 500g

CHLBIC

Custom Fabric Litebox profile



Length: 20mm - 3000mm
Weight: Custom*

Please contact for specific lengths & weights according to your order

CHLBIE

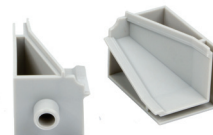
Channel fabric litebox insert edge



Weight: 15g
Pack Quantity: 1

CHLBIC

Channel fabric litebox insert corner



Weight: 19g
Pack Quantity: 1

CHLBICF

Channel fabric insert corner with notch



Weight: 18g
Pack Quantity: 1

LBL460

Extension Litebox lead - 460mm



Weight: 70.4g
Pack Quantity: 1
Size: 460mm

LD24V060 / 100

Transformer 60 / 100 amp



Internal size: 290wx250dx960h - mm
Weight: 354g - 863g
Capacity: 56 tubes - 951 mm c/c
Pack Quantity: 1

BSMC

M-Clip



Weight: 4g
Pack Quantity: 20

LS24V056-5L / 9L

LED light strips (5/9 LED)



Internal size: 350 Ø x980h
Weight: 122g / 166g
Capacity: up to 15m graphic panels
Pack Quantity: 2

LEDB

LED Light Bag



Internal size: 345wx325dx1265l - mm
Weight: 500g
Capacity: 90 tubes- 1260mmc/c
Pack Quantity: 1

CBR

Carry Bag Roller



Internal size: 345wx325dx1265l - mm
Weight: 1.2kg
Capacity: 90 tubes- 1260mmc/c
Pack Quantity: 1



T3

AFFINITY

DETAILS

The T3 Affinity system is the complete retail and display system. The patented design allows for displays and stands to be built quickly and without the use of tools. With its broad range of retro fit accessories it is ideally suited for all manner of product and graphic displays.



NO-TOOLS



MODULAR COMPONENTS



EASY TO TRANSPORT



FAST BUILD TIMES

T3 AFFINITY - EXTRUSIONS & PROFILES

AYEB

Affinity Beam Standard (with End fittings)



Size	Weight	Cut length	Code
0300mm c/c	0277g	0237mm	AYEB0300
0400mm c/c	0366g	0337mm	AYEB0400
0600mm c/c	0545g	0537mm	AYEB0600
0800mm c/c	0724g	0737mm	AYEB0800
1000mm c/c	0904g	0937mm	AYEB1000
1200mm c/c	1084g	1137mm	AYEB1200
1500mm c/c	1352g	1437mm	AYEB1500
CUSTOM	-	50-2400mm	AYEB
CUSTOM	-	50-2400mm	AYEBTL

AYEP

Affinity Post Standard (with End fittings)



Size	Weight	Cut length	Code
0885mm c/c	0277g	0885mm	AYEP0885
0985mm c/c	0366g	0985mm	AYEP0985
1085mm c/c	0545g	1085mm	AYEP1085
1135mm c/c	0724g	1135mm	AYEP1135
CUSTOM	-	50-2400mm	AYEP

AYEBP24

Stock length beam - (2400mm only)



Weight: 2146g
Cut length: 2400mm

AYEPP24

Stock length Posts - (2400mm only)



Weight: 2390g
Cut length: 2400mm

AYER 19 / 25

19mm and 25mm Rail



Weight: 20g
Pack Quantity: 1

T3 AFFINITY - COMPONENTS

AYA - 1001

Connector



Weight: 51g
Pack Quantity: 1

AYA - 1002

Post Connector cap



Weight: 36g
Pack Quantity: 1

AYA - 1003

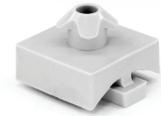
Post Connector Cap with M8 thread



Weight: 35g
Pack Quantity: 1

AYA - 1004

T3 Adaptor



*joins T3 Frame to T3 Affinity

Weight: 13g
Pack Quantity: 1

AYA - 1006

Hinge



Weight: 26g
Pack Quantity: 1

AYA - 1007

Top/ Board retainer Stud



Weight: 32g
Pack Quantity: 1

AYA - 1008

Foot 80mm (M8 Stud only)



Weight: 108g
Pack Quantity: 1

AYA - 1009

Foot 50mm (M8 Stud only)



Weight: 40g
Pack Quantity: 1

AYA - 2000

Foot 80mm (with connector post cap)



Weight: 143g
Pack Quantity: 1

AYA - 2001

Foot 50mm (with connector post cap)



Weight: 74g
Pack Quantity: 1

AYA - 2010

M8 cap c/w wheel (unbraked)



Weight: 132g
Pack Quantity: 1

AYA - 2011

M8 Cap c/w wheel (braked)

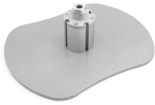


Weight: 131g
Pack Quantity: 1

T3 AFFINITY - COMPONENTS

AYA - 2104

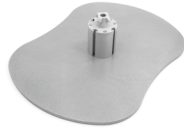
Base assembly Small



Weight: 2091g
Pack Quantity: 1

AYA - 2105

Base assembly Large



Weight: 3545g
Pack Quantity: 1

AYA - 2106

Base assembly square large



*Available 2017

Weight: 3200g
Pack Quantity: 1

T3 AFFINITY IS A COST EFFECTIVE SOLUTION WITH A FOCUS ON SIMPLE INSTALLATION AND EFFICIENT STORAGE AND TRANSPORT.

T3
SYSTEMS



T3 AFFINITY - COMPONENTS

AYA - 3001

End fitting for Beam



Weight: 28g
Pack Quantity: 1

AYA - 3002

End fitting for Post



Weight: 26g
Pack Quantity: 1

AYA - 3003

Twist End fitting for Beam



Weight: 34g
Pack Quantity: 1

AYA - 3004

Molded end fitting for 19mm Graphic Pole



Weight: 26g
Pack Quantity: 1

AYA - 3005

Side End Fitting for 19mm Graphic Pole



Weight: 21g
Pack Quantity: 1

AYA - 3006

Slot & Screw End Fitting for 25mm clothes rail



Weight: 112g
Pack Quantity: 1

AYA - 3008

T - Bolt



Weight: 7g
Pack Quantity: 1

AYA - 3010

Post End Cap



Weight: 8g
Pack Quantity: 1

AYA - 3011

Beam End Cap



Weight: 7g
Pack Quantity: 1

AYA - 3012

19mm Graphic pole End cap (Black)



Weight: 4g
Pack Quantity: 2

AYA - 3013

25mm Graphic pole End cap (Black)



Weight: 8g
Pack Quantity: 2

T3 AFFINITY - BRACKETS & CLAMPS

AYA - 4001P

Shelf bracket Pair (c/w T-bolt)



Weight: 394g
Pack Quantity: 1

AYA - 4001 L/R

Shelf bracket Left / Right (c/w T-bolt)



Weight: 197g
Pack Quantity: 1

AYA - 4003 P

Double Shelf bracket Pair (c/w T-bolt)



Weight: 742g
Pack Quantity: 2

AYA - 4003 S

Single Shelf bracket Pair (c/w T-bolt)



Weight: 372g
Pack Quantity: 1

AYA - 4004

5 Slot bracket for Beam (c/w T-bolt)



Weight: 173g
Pack Quantity: 1

AYA - 4005

5 Slot bracket for Post (c/w T-bolt)



Weight: 173g
Pack Quantity: 1

AYA - 4006

90° bracket for Beam (c/w T-bolt)



Weight: 43g
Pack Quantity: 1

AYA - 4007

90° bracket for post (c/w T-bolt)



Weight: 43g
Pack Quantity: 1

AYA - 4008 S/P

Saddle bracket For Beam (Single / Pair)



Weight: 45g
Pack Quantity: 1

AYA - 4009

90° bracket for Beam (c/w T-bolt)



Weight: 52g
Pack Quantity: 1

AYA - 4015

T3 Clamp



Weight: 070g
Pack Quantity: 1

AYA - 4020

Post Connector Rigidizer

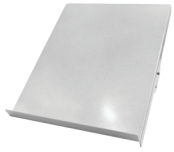


Weight: 60g
Pack Quantity: 1

T3 AFFINITY - HOLDERS & SHELVES

AYA - 5001 (L/R)

Literature holder (c/w t bolt)



Weight: 194.4g
Pack Quantity: 1

AYA - 5002

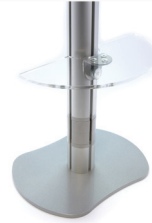
A4 brochure holder



Weight: 300g
(c/w AYA 4008 T-bolt)
Pack Quantity: 1

AYA - 5003

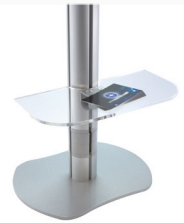
Acrylic shelf semi-circle Small



Weight: 150g
(c/w AYA 4008 T-bolt)
Pack Quantity: 1

AYA - 5004

Acrylic shelf small - Oblong



Weight: 180g
(c/w AYA 4008 T-bolt)
Pack Quantity: 1

AYA - 5005

Acrylic shelf semi-circle Large



Weight: 200g
(c/w AYA 4008 T-bolt)
Pack Quantity: 1

AYA - 5006

Acrylic shelf large - Oblong



Weight: 300g
(c/w AYA 4008 T-bolt)
Pack Quantity: 1

AYA - 5007

Metal shelf (Fits AYE0863 c/c tube)



Weight: 4600g
Pack Quantity: 1

AYA - 5014 /5015

Affinity Monitor Support Hook Small / Large



Weight: 9730g
Pack Quantity: 1

AYA - 5012

Monitor Holder



Weight: 612g
Pack Quantity: 1

AYA - 5020

Tablet Holder Small



Weight: 626g
(c/w AYA 4008 T-bolt)
Pack Quantity: 1

AYA - 5021

Tablet Holder Large



Weight: 664g
(c/w AYA 4008 T-bolt)
Pack Quantity: 1

T3 AFFINITY - LIGHTING & CASES

AYA - 5010

Wire System



Weight: 200g
(c/w AYA 4008 T-bolt)
Pack Quantity: 1

AYA - 7011

Case (with wheels)



Weight: 8kg
Pack Quantity: 1

TWIST - LOCK CONNECT

AYA - 6001

Mounting Clip for Arm Lights



Weight: 6g
Pack Quantity: 1

AYA - 6002 EU / UK / USA

Armlight LED Chrome EU/UK/USA (c/w AYA6001)



Weight: 402g
Pack Quantity: 1

Mounting Clip for Arm Lights

AYA-6003 BLK EU / UK / USA

Armlight LED Black EU/UK/USA (c/w AYA6001)



Weight: 406g
Pack Quantity: 1

FOR MORE INFORMATION
ABOUT T3 AFFINITY VISIT
WWW.NEXT-XPO.COM



TS

S Y S T E M S

FOR MORE NEWS AND INFORMATION
ABOUT ALL OUR PRODUCE VISIT:

WWW.NEXT-XPO.COM

TS

EASYS-CUBE

TS

LITEBOX

TS

VEFINITY

TS

MANDLITE

TS

FRAME



NEXT-XPO



CALL

+32 (0)2 384 83 02



EMAIL

info@next-xpo.com



WELCOME TO T3 SYSTEMS

The world's most innovative and versatile display solution company.

FIND OUT MORE

T3 Systems is manufactured, distributed and owned by Tecna Display Ltd, based in London. We have developed into one of the market leaders in the supply, design and manufacture of Modular Display Systems.

Modular display companies, exhibitions, display and interior contractors around the world are using T3

NEXT-XPO

NEXT-XPO division of Next-Way
2A, avenue de l'artisanat
B1420 Braine L'Alleud / Belgium
+32 2 384 83 02 (office)
+ 32 475 26 41 26 (gsm)



Visit us on Social Media



WWW.NEXT-XPO.COM

