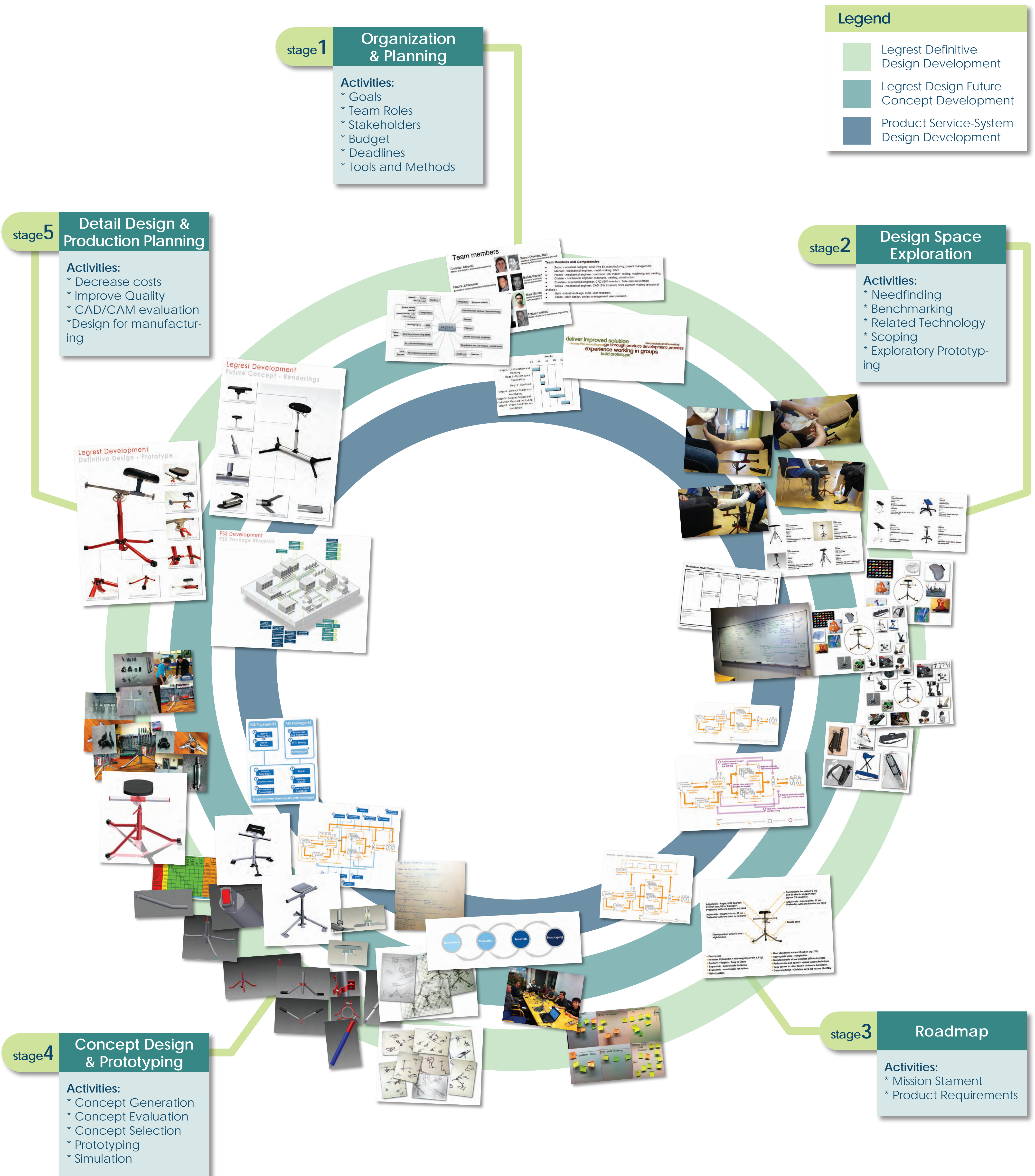


# Project Overview

## Process - Stages & Gates





# Legrest Development

## Definitive Design - Prototype





# Legrest Development

## Future Concept - Renderings



**Angle Adjustment** The angle adjustment handle allows the padded rest to be positioned ergonomically to match the patients position.



**Legrest Pad** The padded rest provides a comfortable support for the patients limb. It can also be easily wiped clean and disinfected.



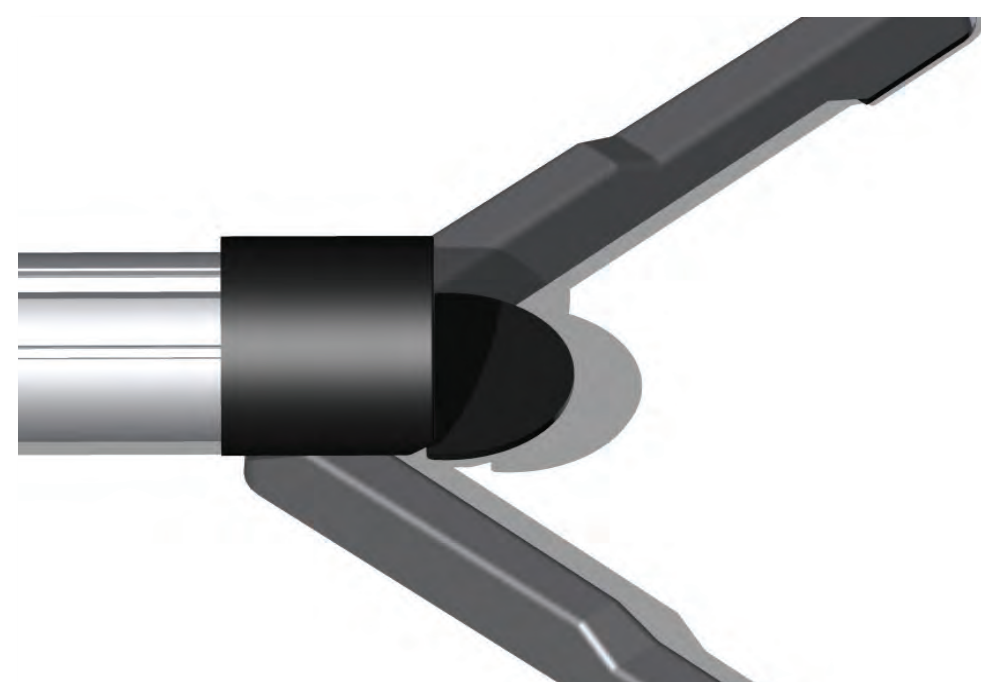
**Height Adjustment** The internal gas cylinder allows for effortless height adjustments.



**Sliding Rail** The sliding rail allows the nurse to position the padded rest where needed without having to move the entire legrest.



**Collapsible** The unit can be folded down for transport and storage.



**Height Adj. Pedal** Height adjustment (gas cylinder) activated through the use of a foot pedal. This frees up one of the nurses hands.

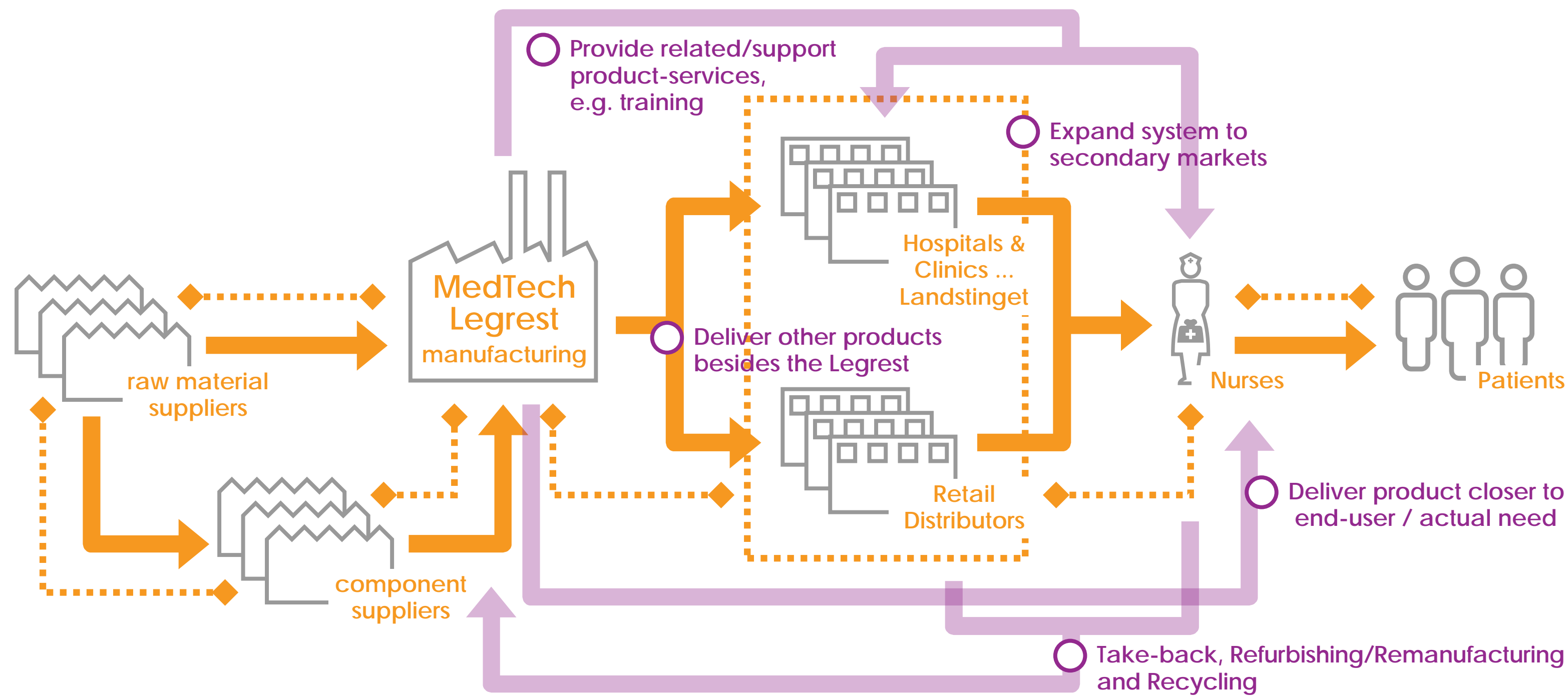


**High Friction Feet** Flat feet with high friction rubber to improve traction and stability.

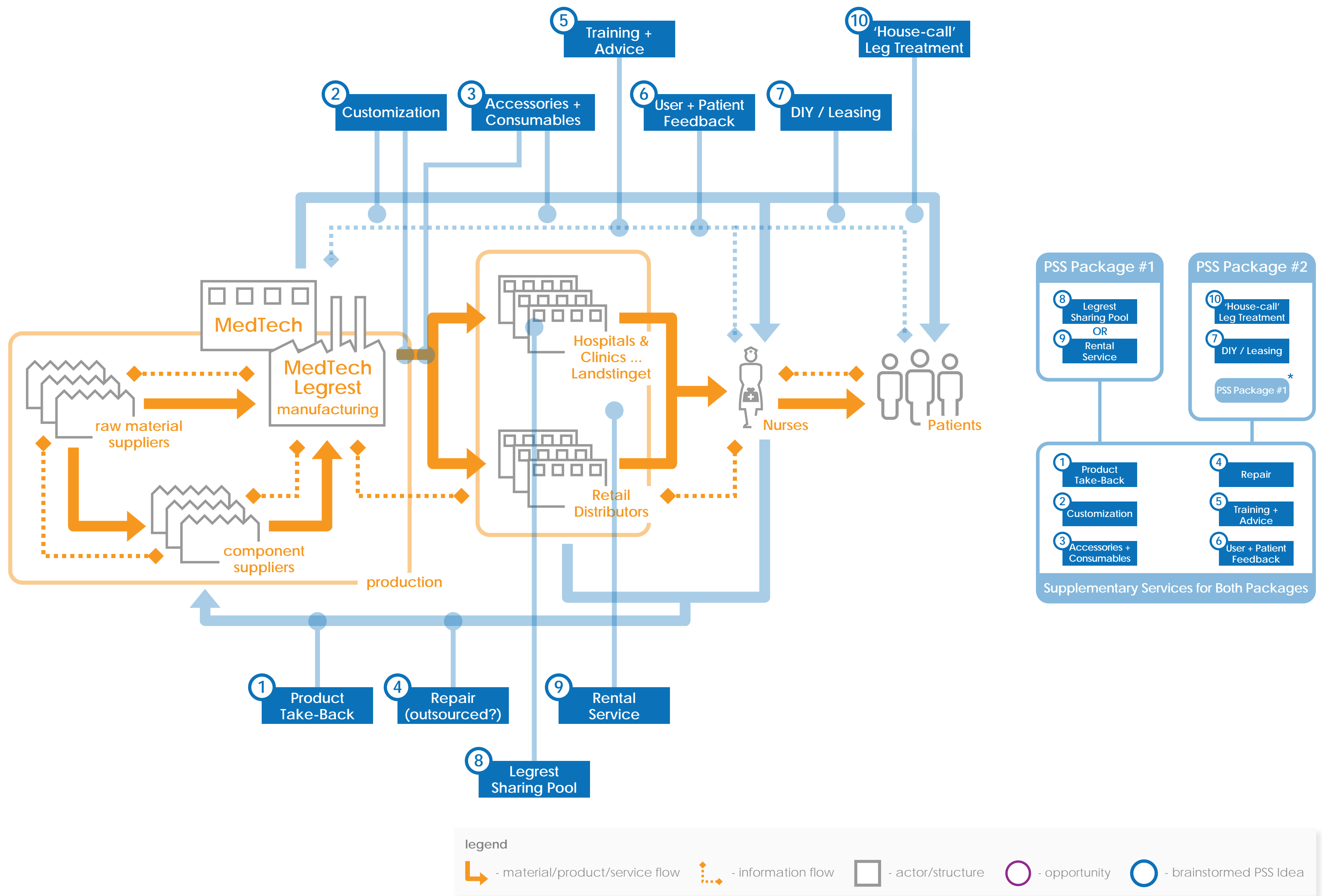
# PSS Development

## Analysis and Idea Generation

System Map - Current Situation - Main Opportunities



System Map - Current Situation - Brainstormed PSS Ideas





# PSS Development

## PSS Package Blueprint

