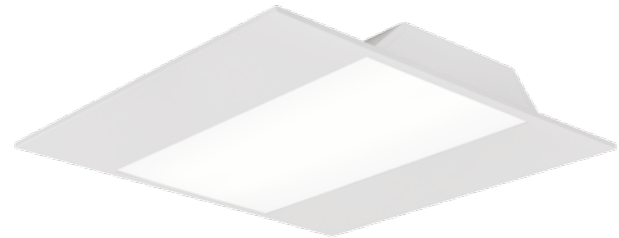




Modern recessed luminaire for modular suspended ceilings for LED light sources.

<b>TECHNICAL DATA</b>	<b>Mounting:</b> directly in the ceiling construction <b>Body:</b> powder-painted steel sheet <b>Colour:</b> white
<b>ELECTRICAL DATA</b>	<b>Diffuser:</b> opal plexiglass (PLX) <b>Power supply efficiency:</b> >89% <b>Electrical connection:</b> max 3x2,5 mm <sup>2</sup> wire <b>Power:</b> 220-240V 50/60Hz <b>Includes light source:</b> yes
<b>OPTICAL DATA</b>	<b>Type of equipment:</b> STANDARD, EASY CONNECT, DALI EASY CONNECT, WIELAND, EM 3h EASY CONNECT <b>Light distribution:</b> rotationally-asymmetric <b>Way of lighting:</b> direct
<b>ADDITIONAL INFO</b>	<b>Operating temperature range:</b> 0° C ... +35° C <b>Lifetime (L70B50):</b> 50 000 h
<b>GENERAL DATA</b>	<b>Warranty:</b> 3 years <b>Application:</b> pathways, conference rooms

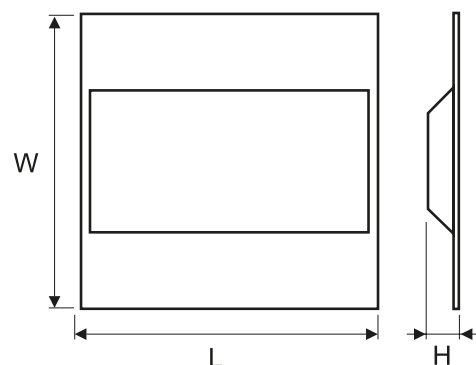


Code	Replacement of conventional technology [W]	Power LED [W]	Luminaire power [W]	Lumen LED [lm]	Lumen luminaire [lm]	Efficacy [lm/W]	Colour temperature [K]	CRI/ Ra	Light output in emergency mode
<b>Type of equipment: STANDARD</b>									
300061.00021	3x14W (57W)	22	24	3150	2600	108	3000	≥80	-
300061.00001	3x14W (57W)	22	24	3150	2600	108	4000	≥80	-
300061.00022	4x14/18W (76W/96W)	33	37	4500	3700	100	3000	≥80	-
300061.00002	4x14/18W (76W/96W)	33	37	4500	3700	100	4000	≥80	-
<b>Type of equipment: EASY CONNECT</b>									
300061.00067	3x14W (57W)	22	24	3150	2600	108	3000	≥80	-
300061.00068	3x14W (57W)	22	24	3150	2600	108	4000	≥80	-
300061.00069	4x14/18W (76W/96W)	33	37	4500	3700	100	3000	≥80	-
300061.00070	4x14/18W (76W/96W)	33	37	4500	3700	100	4000	≥80	-
<b>Type of equipment: DALI EASY CONNECT</b>									
300061.00041	3x14W (57W)	22	24	3150	2600	108	3000	≥80	-
300061.00043	3x14W (57W)	22	24	3150	2600	108	4000	≥80	-
300061.00044	4x14/18W (76W/96W)	33	37	4500	3700	100	3000	≥80	-
300061.00042	4x14/18W (76W/96W)	33	37	4500	3700	100	4000	≥80	-
<b>Type of equipment: WIELAND</b>									
300061.00025	3x14W (57W)	22	24	3150	2600	108	3000	≥80	-
300061.00005	3x14W (57W)	22	24	3150	2600	108	4000	≥80	-
300061.00026	4x14/18W (76W/96W)	33	37	4500	3700	100	3000	≥80	-
300061.00006	4x14/18W (76W/96W)	33	37	4500	3700	100	4000	≥80	-
<b>Type of equipment: EM 3h EASY CONNECT</b>									
300061.00027B	3x14W (57W)	22	29	3150	2600	90	3000	≥80	330
300061.00007B	3x14W (57W)	22	29	3150	2600	90	4000	≥80	330
300061.00028B	4x14/18W (76W/96W)	33	39	4500	3700	95	3000	≥80	330
300061.00008B	4x14/18W (76W/96W)	33	39	4500	3700	95	4000	≥80	330

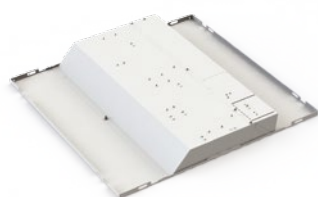
Luminous flux tolerance +/- 10%.

Lighting beam, light intensity distribution and light efficiency were examined in accordance with the EN ISO 17025:2005 norm for EN13032 norm series and the LM-79 norm.  
Up-to-date product info available on our website [www.lugbox24.com](http://www.lugbox24.com)

Code	Dimensions [mm] L W H	Mounting dimensions [mm] L W	Pallet quantity	Quantity in package	Net weight [kg]
<b>Type of equipment: STANDARD</b>					
300061.00021	595 595 60	600 600	50	1	3.3
300061.00001	595 595 60	600 600	50	1	3.3
300061.00022	595 595 60	600 600	50	1	3.3
300061.00002	595 595 60	600 600	50	1	3.3
<b>Type of equipment: EASY CONNECT</b>					
300061.00067	595 595 60	600 600	50	1	3.3
300061.00068	595 595 60	600 600	50	1	3.3
300061.00069	595 595 60	600 600	50	1	3.3
300061.00070	595 595 60	600 600	50	1	3.3
<b>Type of equipment: DALI EASY CONNECT</b>					
300061.00041	595 595 60	600 600	50	1	3.3
300061.00043	595 595 60	600 600	50	1	3.3
300061.00044	595 595 60	600 600	50	1	3.3
300061.00042	595 595 60	600 600	50	1	3.3
<b>Type of equipment: WIELAND</b>					
300061.00025	595 595 60	600 600	50	1	3.3
300061.00005	595 595 60	600 600	50	1	3.3
300061.00026	595 595 60	600 600	50	1	3.3
300061.00006	595 595 60	600 600	50	1	3.3
<b>Type of equipment: EM 3h EASY CONNECT</b>					
300061.00027B	595 595 60	600 600	50	1	4.0
300061.00007B	595 595 60	600 600	50	1	4.0
300061.00028B	595 595 60	600 600	50	1	4.0
300061.00008B	595 595 60	600 600	50	1	4.0



## OTHER PICTURES



LUGCLASSIC ECO LB LED p/t EM 3h

## ACCESSORIES



150210.00605

Mounting frame for plasterboard ceilings 595x595



300061.00080

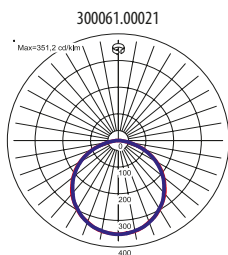
WIELAND Pluggable electro-installation 3-Pole Female Connector

Luminous flux tolerance +/- 10%.

Lighting beam, light intensity distribution and light efficiency were examined in accordance with the EN ISO 17025:2005 norm for EN13032 norm series and the LM-79 norm.

Up-to-date product info available on our website [www.lugbox24.com](http://www.lugbox24.com)

## LIGHT BEAM CURVES



## OTHER PROJECTS



Supermarket Intermarche, Czarnków, Poland

Luminous flux tolerance +/- 10%.

Lighting beam, light intensity distribution and light efficiency were examined in accordance with the EN ISO 17025:2005 norm for EN13032 norm series and the LM-79 norm.

Up-to-date product info available on our website [www.lugbox24.com](http://www.lugbox24.com)