



DRUNKEN SAILOR

PARAMOUNT 2026



Musical score for Tenor, Baritone, and Bass voices, and piano accompaniment. The score is in 8/8 time and features the lyrics: "What shall we do? Drunken Sail-or Drunken Sail-or".

Measures 1-6:

Tenor: [Musical notation]

Baritone: [Musical notation] Drun - ken Drun - ken

Bass: [Musical notation] Drunk-en Sail-or Drunk-en Sail-or

Measures 7-12:

Tenor: [Musical notation] What shall we do?

Baritone: [Musical notation] Drun - ken Drun - ken

Bass: [Musical notation] Drunk-en Sail-or Drunk-en Sail-or

Measures 13-18:

Tenor: [Musical notation] What shall we do? What shall we do? What shall we do?

Baritone: [Musical notation] What shall we do?

Bass: [Musical notation] Drunk-en Sail - or Drunk-en Sail - or What shall we do?

Verse 1 – Unison

What Shall We do with the Drunken Sailor?
(x3)

Early in the Morning

Hooray and up she rises
Early in the Morning

Verse 2 – Group 1 tune

Put him in the long boat til' he's sober (x3)
Early in the Morning

Group 2 and 3 –
Heave Ho!
Heave Ho!
Heave Ho!
Oh No!

Chorus B

Group 1 – tune
 Group 2 – tune
 Group 3 - Harmony

53

Hoor - ay and up she ris - es! Hoor - ay and up she ris - es!

Hoor - ay and up she ris - es! Ear - ly in the morn - ing

Verse 3 – Group 1 tune

Put him in bed with the Captain's Daughter (x3)
 Early in the Morning

Group 2 and 3 –
 Heave Ho!
 Heave Ho!
 Heave Ho!
 Oh No!

Chorus B

Group 1 – tune
 Group 2 – tune
 Group 3 - Harmony

53

Hoor - ay and up she ris - es! Hoor - ay and up she ris - es!

Hoor - ay and up she ris - es! Ear - ly in the morn - ing

Group 2 and 3 – intro to verse 4
 “Ouchy ouchy very ouchy”

Verse 4 intro

Ouch-y ouch-y ver - y ouch-y ouch-y ouch-y ver - y ouch-y

Ouch-y ouch-y ver - y ouch-y ouch-y ouch-y ver - y ouch-y

Verse 4 – Group 1 tune

Shave His Belly with a Rusty Razor(x3)
Early in the Morning

Group 2 and 3 –
Ouch Ouch Ouch Just No!
Ouch Ouch Ouch Just No!
Ouch Ouch Ouch Just No!
Oh No!

Chorus B

Group 1 – tune
Group 2 – tune
Group 3 - Harmony

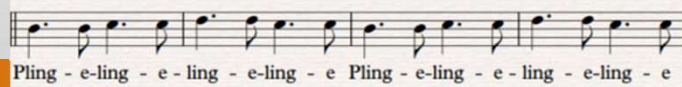
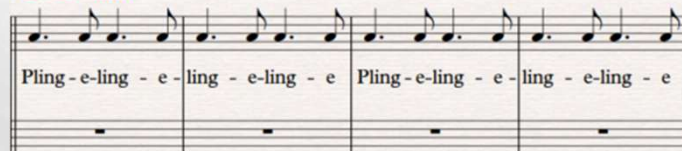
53

Hoor - ay and up she ris - es! Hoor - ay and up she ris - es!

Hoor - ay and up she ris - es! Ear - ly in the mom - ing

Group 1 and 3 – Intro to verse 5

Verse 5 intro



Verse 5 – Group 2 tune

Stick him in a barrel with a hosepipe on him(x3)
Early in the Morning

Group 1 and 3 –
Pling-e-ling-e-ling-e-ling
Pling-e-ling-e-ling-e-ling
Pling-e-ling-e-ling-e-ling
Pling-e-ling-e-morn-ing!

Chorus C

149 Chorus C (ff)

Hoor - ay and up! Hoor - ay and up! Hoor - ay and up!

Group 1 – descant

Group 2 – tune

Group 3 – Harmony (no change)

Ear-ly in the morn - ing

Hoor - ay and up she ris - es! Hoor - ay and up she ris - es!

53

Hoor - ay and up she ris - es! Ear - ly in the morn - ing

Verse 6 – Unison (after the hornpipe!)

That's what we'll do with the drunken sailor
(X3)

Early in the morning!

Chorus C

149 Chorus C1(ff)

Hoor - ay and up! Hoor - ay and up! Hoor - ay and up!

Group 1 – descant

Group 2 – tune

Group 3 – Harmony (no change)

Ear-ly in the morn - ing

Hoor - ay and up she ris - es! Hoor - ay and up she ris - es!

53
Hoor - ay and up she ris - es! Ear - ly in the morn - ing

Last Chorus and ending

8 149 Chorus C1(ff) Drunken Sailor

Hoor - ay and up! Hoor - ay and up! Hoor - ay and up!

Hoor - ay and up she ris - es! Hoor - ay and up she ris - es! Hoor - ay and up she ris - es!

Hoor - ay and up she ris - es! Hoor - ay and up she ris - es! Hoor - ay and up she ris - es!

155

Ear - ly in the Ear - ly in the

Ear - ly in the morn - ing Ear - ly in the morn - ing

Ear - ly in the morn - ing Ear - ly in the morn - ing

159

Ear - ly in the morn - ing!

Ear - ly in the morn - ing!

Ear - ly in the morn - ing!

Detailed description: The image shows two systems of musical notation. The first system, starting at measure 155, features a vocal line in the treble clef and piano accompaniment in the bass clef. The lyrics are 'Ear - ly in the Ear - ly in the' on the first line and 'Ear - ly in the morn - ing Ear - ly in the morn - ing' on the second line. The piano accompaniment consists of a steady eighth-note bass line. The second system, starting at measure 159, continues the vocal line with 'Ear - ly in the morn - ing!' and the piano accompaniment with 'Ear - ly in the morn - ing!'. The piano accompaniment includes a final chord with a fermata. The score is set in a key with one flat and a 3/4 time signature.