

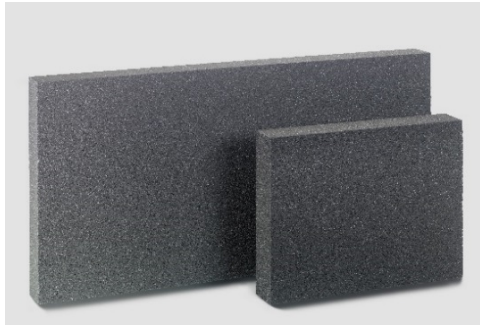
FOAMGLAS® T3+

Page: 1

Date: 10.11.2021

Supersedes: 01.08.2021

www.foamglas.com



FOAMGLAS® T3+ is available in two sizes.

Form of delivery (content per package)

length x width [mm]	600 x 450							
thickness [mm]	50	60	70	80	90	100	110	120
R _D [m²K/W]	1.35	1.65	1.90	2.20	2.50	2.75	3.05	3.30
Units per package	10	8	7	6	6	5	5	4
square metre [m²]	2.70	2.16	1.89	1.62	1.62	1.35	1.35	1.08

length x width [mm]	600 x 450							
thickness [mm]	130	140	150	160	170	180	190	200
R _D [m²K/W]	3.60	3.85	4.15	4.40	4.7	5.0	5.25	5.55
Units per package	4	4	3	3	3	3	3	3
square metre [m²]	1.08	1.08	0.81	0.81	0.81	0.81	0.81	0.81

length x width [mm]	1200 x 600							
thickness [mm]	80	100	120	140	150	160	180	
R _D [m²K/W]	2.20	2.75	3.30	3.85	4.15	4.40	5.0	
Units per pallet*	24	18	16	14	12	12	10	
square metre [m²]	17.28	12.96	11.52	10.08	8.64	8.64	7.20	

Other dimensions and thicknesses are available on request.

* No single package, but all boards on a pallet.

General FOAMGLAS® Cellular Glass Insulation characteristics

Description	: FOAMGLAS® insulation is manufactured from specially graded recycled glass and natural raw materials which are available in abundant supply (sand, dolomite, lime...). The insulation is totally inorganic, contains no ozone depleting propellants, flame resistant additives or binders. Without VOC or other volatile substances.
Reaction to fire (EN 13501-1)	: Core material complying with Euroclass A1, non-combustible, no toxic fumes
Service temperature limits	: from -265°C to +430°C
Water vapour resistance (EN ISO 10456)	: $\mu = \infty$
Hygroscopicity	: zero
Capillarity	: zero
Thermal expansion coefficient (EN 13471)	: $9 \times 10^{-6} \text{ K}^{-1}$
Specific heat (EN ISO 10456)	: 1000 J/(kg·K)

FOAMGLAS® characteristics

Time-tested thermal performance	Waterproof	Resistant to attack	High compressive strength	Acid resistant / chemical resistant
Non-combustible	Impervious to water vapour	Dimensionally stable	Ecological	Radon protection



FOAMGLAS® T3+

Page: 2

Date: 10.11.2021

Supersedes: 01.08.2021

www.foamglas.com

1. Product characteristics according to EN 13167 ¹⁾

Density ($\pm 15\%$) (EN 1602)	: 100 kg/m ³
Thickness (EN 823) ± 2 mm	: from 50 to 200 mm (see table page 1)
Length (EN 822) ± 5 mm	: 600 mm
Width (EN 822) ± 2 mm	: 450 mm or 1200 mm
Thermal conductivity (EN ISO 10456)	: $\lambda_D \leq 0.036$ W/(m·K)
Reaction to fire (EN 13501-1)	: Euroclass A1
Point load (EN 12430)	: PL ≤ 1.5 mm
Compressive strength (EN 826 annexe A)	: CS ≥ 500 kPa
Bending strength (EN 12089)	: BS ≥ 400 kPa
Tensile strength (EN 1607)	: TR ≥ 150 kPa
Compressive creep (EN 1606)	: CC (1.5/1/50) 225

¹⁾ CE-marking ensures conformity with the mandatory essential requirements of CPD as mentioned in EN 13167; within the CEN Keymark certification all mentioned characteristics are certified by an empowered, notified and accredited 3rd party.

2. Additional product characteristics

λ_D -value and mean t° range (EN ISO 13787)	: + 35 °C ≤ 0.040 W/(m·K)
Environmental Product Declaration (ISO 14025 and EN 15804)	: EPD-PCE-20150042-IBA1-DE
Product conformity BS EN 13167	: Nr. CL 07020029

3. Application area

Insulation of:

- flat roofs: concrete, metal deck and special roofs
- façades
- interior insulation: walls, ceilings, floors

* recycled glass consists of highly selected postconsumer glass and highly selected production scrap/co-products.