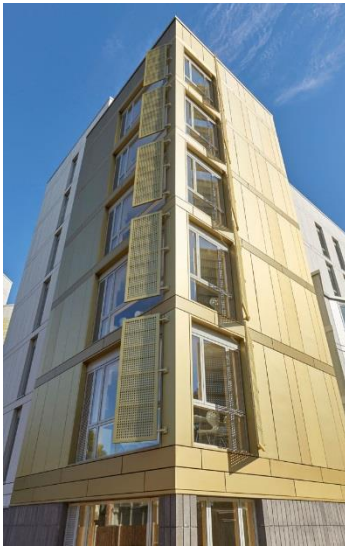
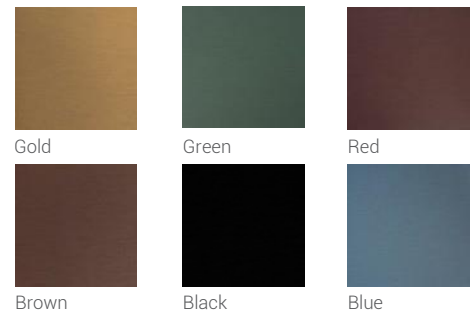


elZinc Rainbow®



elZinc® has developed a process which allows it to offer custom colours.*

**conditions apply. Contact us!*

elZinc Rainbow® is available in a range of natural, warm and attractive graded colours in red, blue, green, black, gold and brown.

elZinc Rainbow® is rolled titanium zinc that complies to both the European Standard EN988 and the American ASTM B-69. The finish is achieved by applying mineral pigments to our pre-treated zinc.

The 35µm organic coating applied over the mineral pigments is an extremely durable finish that provides additional protection against corrosion, over and above the already excellent properties of elZinc Natural.

Main application

- Roofing and façade cladding.
- Rainwater systems
- Interior decoration

Standard measurements

- Widths: 500 - 600 - 650 - 670 - 1000 mm
- Thicknesses: 0,7 - 0,8 - 1 mm

Other non-standard thicknesses are available upon request, from a minimum of 0,5mm to a maximum of 1,2mm.

Formats

- 1000 kg coils (internal diameter: 508mm)
- Fixed length 100 kg coils (pallets of 6 300 mm internal diameter coils)
- Sheets 2000x1000 mm in pallets of 1000 kg

Other formats are available upon request.

Back Face

Backside face in blue or transparent

The back coat applied to the back face of the material is a service lacquer that has not been designed to provide any property in particular. Should there be any requirement in this regard, please contact our technical department.

Specific working recommendations

- Correct behaviour of the film on removal cannot be guaranteed beyond 8 months after dispatch from elZinc, and the film should be immediately removed after installation.
- Use material from the same production batch for each project (it is manufactured using natural materials, so elZinc Rainbow® can have slight variations in shade).
- In order to correctly solder the material, the surface finish must be removed to reveal the shiny base metal below. To do this, elZinc recommends elZinc strippers, which have been specially developed for this purpose.
- Fold the material with an internal radius of 3x the thickness of the zinc.
- Most folding and profiling operations can be executed once the material temperature has reached 10°C.

Reaction to fire test

A1

For more information, contact us or visit our webpage: www.elzinc.es.

Please consult the elZinc warranty terms.

This document only describes the characteristics of elZinc Rainbow, and it is the responsibility of construction professionals to check that other materials and techniques used on the project are compatible with this material.