



EVOQ

A1 FIRE RATED
MODULAR METAL PANEL SYSTEM

EVOQ

system overview

03 EVOQ SYSTEM OVERVIEW

04 EVOQ SYSTEM BENEFITS

06 EVOQ PURE

08 EVOQ SZ

10 EVOQ RZ

12 EVOQ PF

VISION

Faced with the many conflicting demands of stakeholders in the metal facade industry in recent years AK Cladding have created a new vision. Our goal is design sophistication coupled with simplicity of installation and optimum fire safety. We have developed the EVOQ modular metal facade cladding system based on decades of experience in the cladding industry. Every aspect of metal cladding was re-thought and re-engineered to produce a non-combustible solid metal rain-screen facade system that bears all the fruits of design clarity.

EVOQ is a modular aluminium wall panel system that offers design versatility by incorporating the options of flat panels with those of different panel depths, sloping panel faces and even face perforations, into an easy-to-install factory engineered rain-screen system. The simplicity of panel installation coupled with a dry seal joint means the EVOQ rain-screen design provides continuous horizontal venting of the facade, allowing the cavity behind the panels to remain dry, thus minimising the destructive forces of material degradation, bacterial growth and condensation which are otherwise often experienced in less sophisticated cladding systems.

EVOQ produces and delivers a low maintenance, highly aesthetic facade, available in three different design options

EVOQ PURE – CLASSIC FLAT

- Sophisticated minimalism for a contemporary flat facade
- Square and/or rectangular panels with equal depth

EVOQ SZ – DESIGN WITH DEPTH

- Mix multiple planar flat panels to obtain walls with character
- Square and/or rectangular panels of multiple depths can be mixed

EVOQ RZ – SLOPED CREATIVITY

- Explore wall designs with unique sloped faces possible in both horizontal and horizontal and vertical directions
- Square and/or rectangular panels with corners of different angles





EVOQ system benefits

A1 FIRE SAFETY CERTIFICATION

EVOQ is a single skin solid aluminium panel system. No laminations with PE or other core materials are used within EVOQ leading to the highest fire safety certification on the market. Even in the worst fire situation there is no risk of separation of the elements of an EVOQ panel due to the solid metal single skin design. The routing methods used in the forming of aluminium composite panels (ACP's) damage the structural integrity of such materials so that even the highest fire rated versions of ACP's can still delaminate in a fire situation.

DRY JOINTS WITH BACK VENTILATED RAINSCREEN DESIGN

The EVOQ panel system does not use backer rods and wet sealants in the panel joints. The joints are designed to provide a positive rain-screen at all horizontal joints between panels. Any moisture that does get into the panel system is designed to run off into the vertical reveal between panels, which has the advantage of eliminating the unsightly streaking on panel faces commonly associated with wet seal ACP installation.

HIGH QUALITY COMPONENTS

- ALUMINIUM
EVOQ is constructed from 3005 alloy. An alloy that is widely recognized and used for its combination of high strength and flexibility necessary for intricate designs.
- COATINGS
The coatings used are all multilayer, high performance HDPS coatings with a minimum standard warranty periods of 15 years.

DESIGN FLEXIBILITY

- PANEL DESIGN
EVOQ comes in three different panel designs from a flat to a distinguished angled version. EVOQ PF offers the option of perforated panels.
- CONCEALED FASTENERS
The fastening system of EVOQ panels is hidden within the panel joinery design, which means no unsightly fasteners, no touch-up problems, no need to cover fasteners with wet sealants.
- CUSTOM COLOURS
On top of a range of selected colours readily possible, custom colour and/or design development by Euramax is also possible.

EASY TO INSTALL

An inherent part of EVOQ is its all aluminium hanging system. This makes the panels easy to install, in a bottom-up sequence. Multiple floor, high height buildings can be clad in EVOQ in the same manner as was previously done with ACP but in less time due to the elimination of face applied wet sealants.

VALUE FOR MONEY SOLUTION

Due to its excellence in design simplicity EVOQ offers a high quality system at very competitive prices compared to the alternatives.

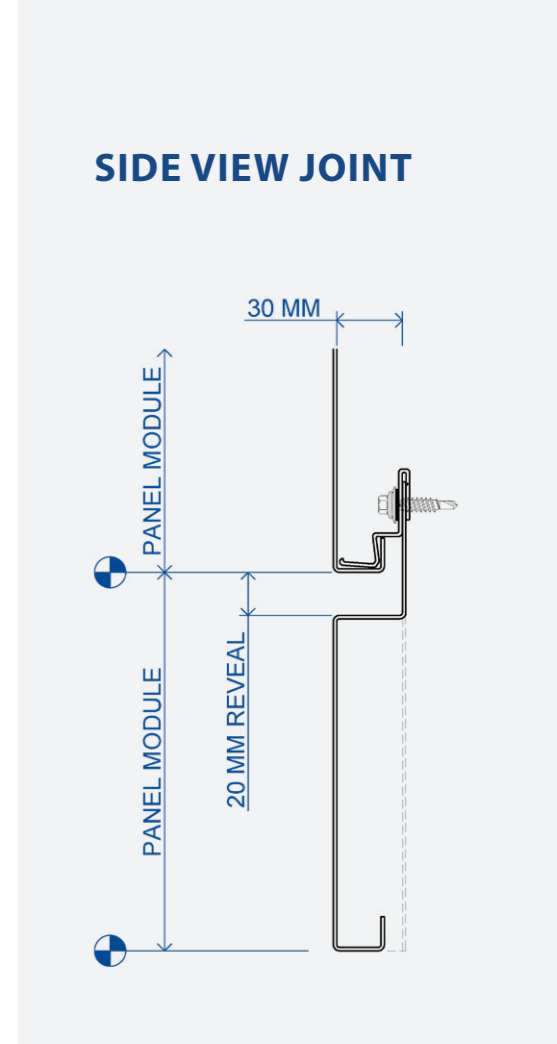


EVOQ
pure

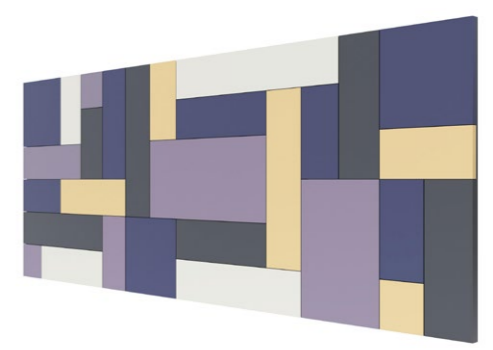
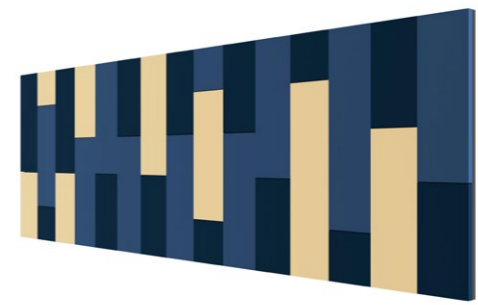
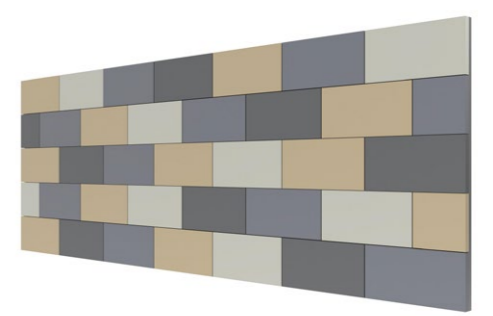
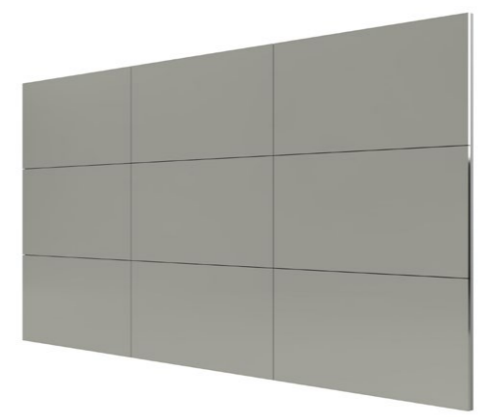
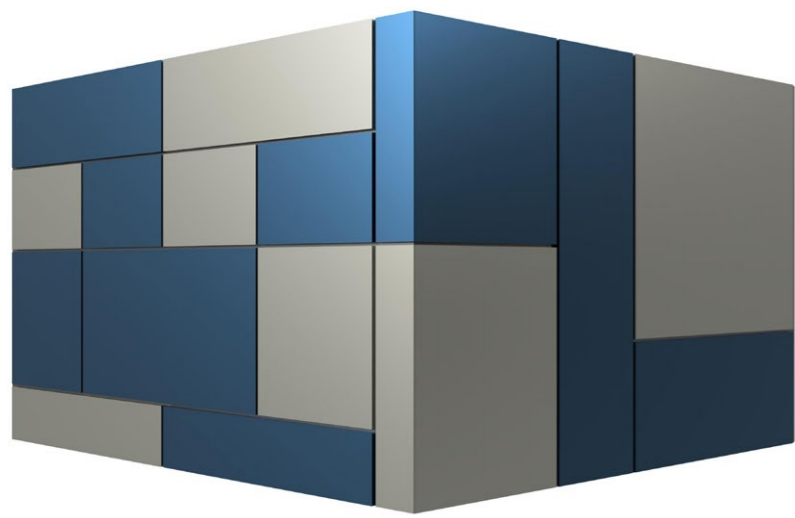
classic flat

Our core design. With EVOQ PURE facades can be constructed based on panels with a uniform 30 mm depth across the facade. These can be manufactured in squares or rectangular offering a wide range of design options.

	1.5 mm Aluminium
Max. Module Width	1395 mm
Max. Module Length	3935 mm
Panel Reveal Width	20 mm
Panel Depth	30 mm
Shapes	Square & Rectangular
Perforation	80 variations
Finishes	PE, HDP, PVDF, FEVE



WALL DESIGN OPTIONS





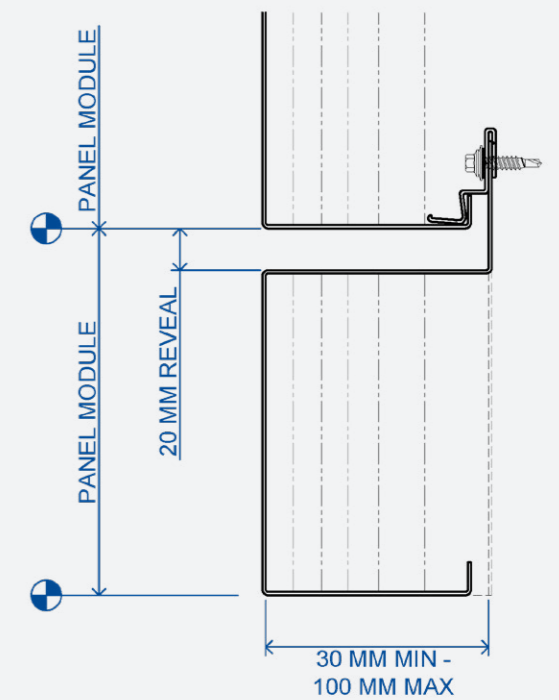
EVOQ
SZ

design with depth

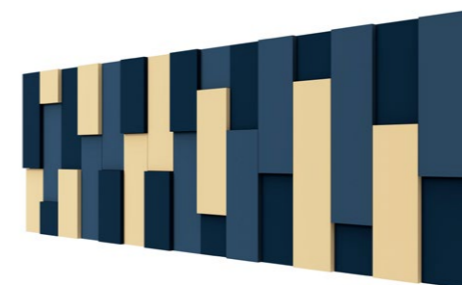
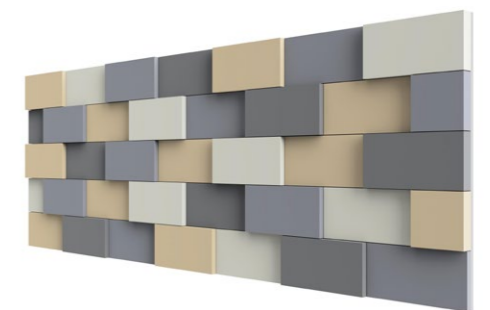
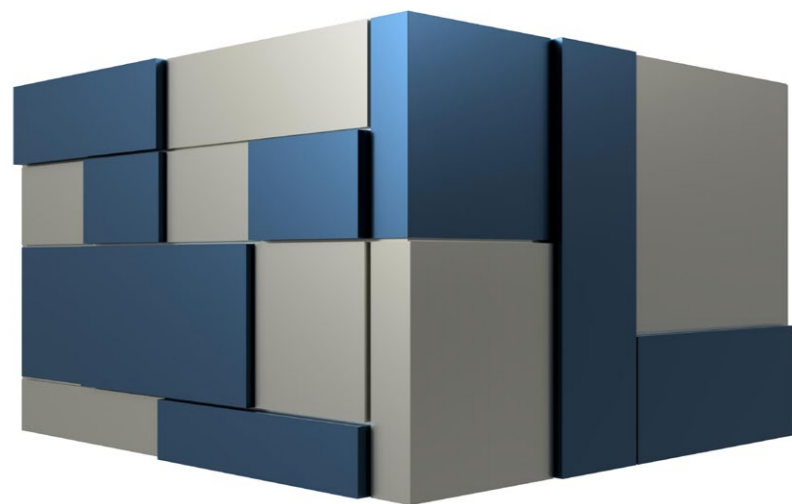
The next step in wall designs is EVOQ SZ. Flat panels available in five different depths which can be combined to develop custom wall designs. Mixing square and rectangular panels in a variety of depths is also possible.

	1.5 mm Aluminium
Max. Module Width	1000 mm
Max. Module Length	2500 mm
Panel Reveal Width	20 mm
Panel Depth	30 mm 50 mm 65 mm 75 mm 90 mm 100 mm
Shapes	Square & Rectangular
Perforation	80 variations
Finishes	PE, HDP, PVDF, FEVE

SIDE VIEW JOINT



WALL DESIGN OPTIONS





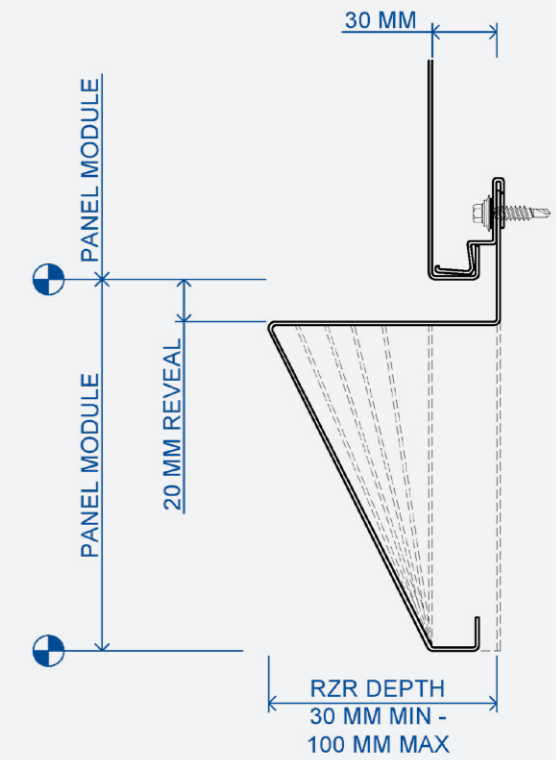
EVOQQ
RZ

sloped creativity

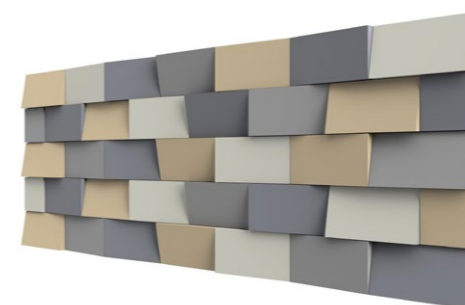
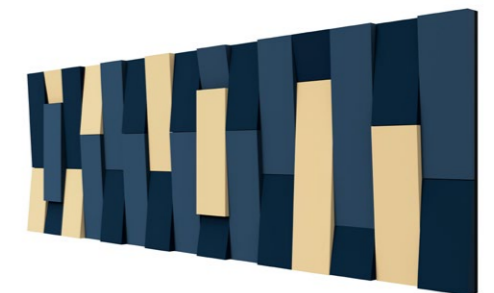
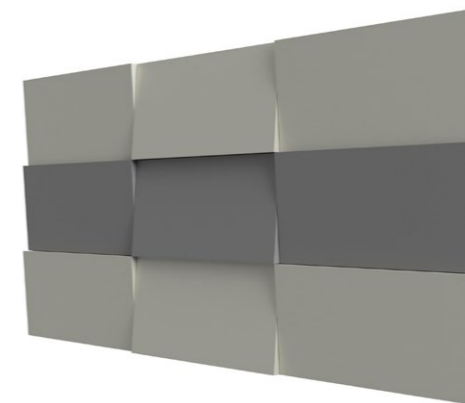
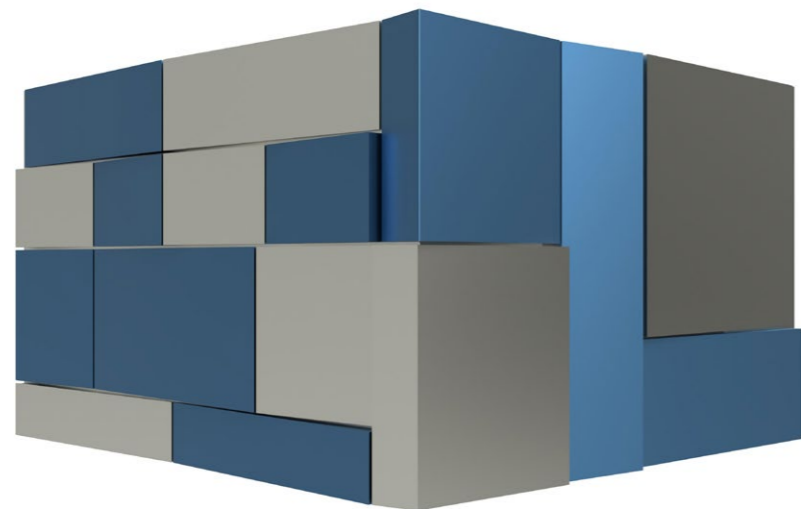
Maximum freedom in facade design is offered by EVOQQ RZ. Sophisticated wall reliefs are made possible through the use of sloped panels that can be applied in every direction.

	1.5 mm Aluminium
Max. Module Width	1000 mm
Max. Module Length	1000 mm
Panel Reveal Width	20 mm
Panel Depth Combinations within Surface	30 mm to 100 mm variable in 10 mm increments
Shapes	Square & Rectangular
Finishes	PE, HDP, PVDF, FEVE

SIDE VIEW JOINT



WALL DESIGN OPTIONS



AK CLADDING – EVOQ FACADE PANEL DESIGN & MANUFACTURING

AK Cladding LLC provide expertise, assurance and safety solutions to the construction industry in the design analysis, supply, installation and management of all types of building envelopes, delivering confidence and satisfaction to all stakeholders. With over 25 years of experience in the construction industry in both the United Kingdom and the Middle East, AK Cladding

is the right partner for any metal facade project. Based on this expertise and evaluating the multiple issues on the market regarding today's alternatives, AK Cladding has made the decision to develop and distribute EVOQ. An A1 fire rated panel, that is aesthetically pleasing, easy to install and offers great value for money.

EVOQ Pure, SZ and RZ options are also available with face perforations. These perforations can be a custom pattern or design, they can be of regular size and layout or they can even be used to show a logo or company name.

EVOQ PF
perforated

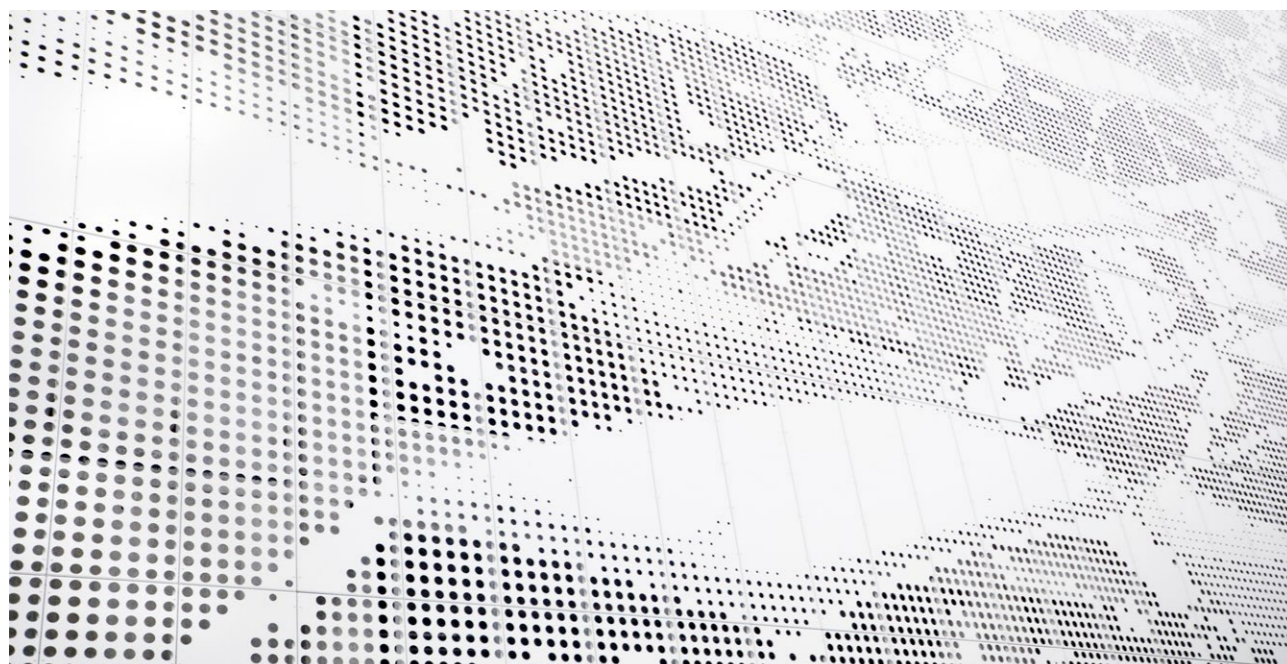


EVOQ MANUFACTURING

Fully Integrated CNC production line.

Our fully integrated production line requires minimal input by the factory technicians, as the cutting and folding of the EVOQ panel is programmed by our design team, eliminating manual inputs and potential errors on the production line.

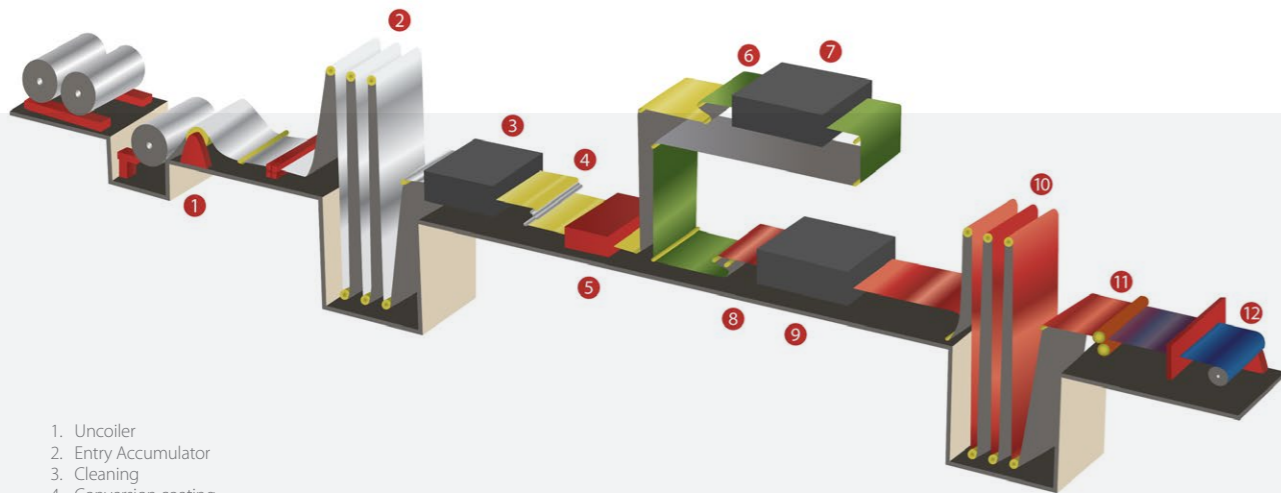
Our CNC machinery works to the highest level of accuracy ensuring each and every panel is manufactured to stringent tolerances. The LCD display clearly shows the operator what tooling is required to perform each operation to the highest accuracy and standard whilst eliminating any clashes during the production process.



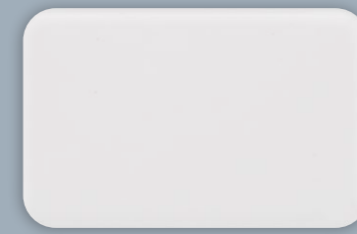
EVOQ SURFACE PERFORMANCE

COIL COATING PROCESS

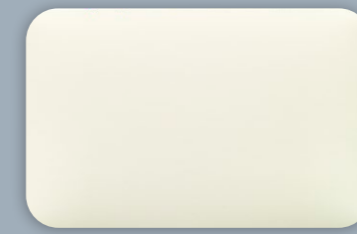
Coil coating or pre-painting is an industrialized process in which large metal coils go through a series of fully automated production steps prior to final fabrication stages. The process was initiated in the 1950's. Since then, the fundamental benefits of painting "in the flat" and subsequent bending and cutting the material into shape have not changed.



1. Uncoiler
2. Entry Accumulator
3. Cleaning
4. Conversion coating
5. Dryer (~160°C)
6. Primer coater
7. Oven (~230°C)
8. Top coater
9. Oven (~230°C)
10. Exit accumulator
11. Foil application
12. Recoiling



Traffic White RAL 9016



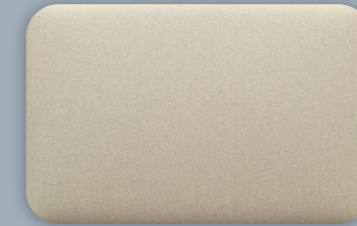
Pearl White RAL 1013



Silver Metallic RAL 9006



Gold Metallic



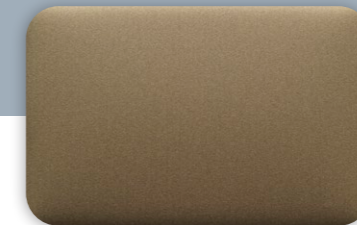
Pale Umber



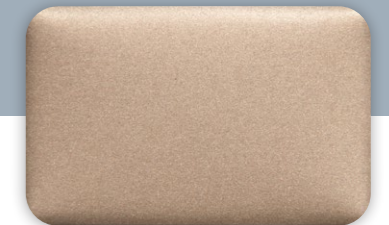
Silver Bronze



Anodized Autumn



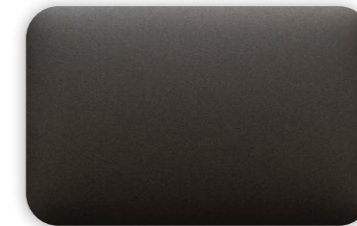
Umber



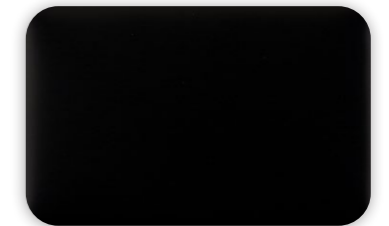
Bronze Metallic



Sunshine Grey Metallic



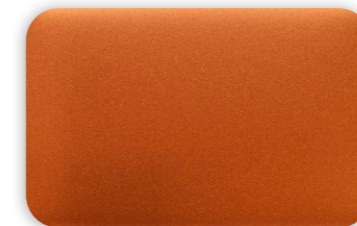
Dark Bronze



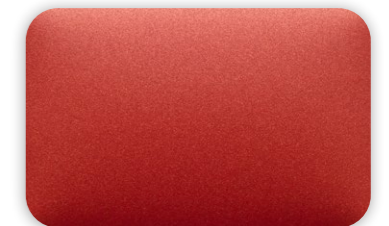
Jet Black RAL 9005



Azurite Blue Green



Dark Copper Metallic



Anodized Red

COLOUR PORTFOLIO

Our coating advice may differ strongly for different regions across the globe. A suitable coating for a moderate environment in Europe may be totally unsuitable for the Middle East or for coastal areas with saltwater influence. Therefore, it is important to ask for project specific coating advice. However, EVOQ can be supplied in finishes that

meet the harshest areas. Multiple layer HDPS system offer long warranty periods even in the harshest areas. And whilst we offer a large number of colours from our portfolio, it is also possible to develop custom colours from minimal orders of 500 m².



AK CLADDING LLC

Dubai Investments Park

Dubai - United Arab Emirates

PO Box 78985

T +971 4388 6582 | info@akcladding.com

akcladding.com



Manufacturer's License ترخيص مصنع

LMTNA0000199878-2021

رقم الترخيص
License Number

1 - 1

عدد التراخيص
Number of Licenses

1273029

رقم السجل
Registration Number

777246

رقم الترخيص
License Number

ايه كى كلادنچ اندستريس ش.ذ.م.م

اسم المصنع
Name of Factory

الامارات

الجنسية
Nationality

محمود عوض محفوظ على

اسم صاحب الترخيص
Owner of the License

بريطانيا

الجنسية
Nationality

كيث جورج ايفانس

اطراف الرخصة
Partner in the License

78985

ص.ب.
P.O. Box

971-4-3886583

رقم الفاكس
Fax Number

971-4-3886582

رقم الهاتف
Office Phone Number

معرض 4 ملك تراك الامارات للنقل البري العام - بردي - مجمع دبي للاستثمار الالى

عنوان الشركة
Company Address

2

عدد المعدات والأجهزة المعتمدة
Total number of Products approved

k.evans@akcladding.com

الموقع / البريد الإلكتروني
Email of the Company

2026/02/08 م

تاريخ الانتهاء
License Expired

2022/04/18 م

تاريخ الإصدار
License Issued

2017/03/01 م

تأسست بتاريخ
Company Registered Date

تم اصدار الترخيص استناداً إلى القرار الوزاري رقم (213) لسنة 2017، في شأن تنظيم خدمات الدفاع المدني
The license was issued pursuant to Ministerial Decree No. (213) for the year 2017 pertaining the regulation of civil defense services





اسم المصنع Name of Factory	ايه كى كلادنج اندستريس ش.ذ.م.م
-------------------------------	--------------------------------

رقم الترخيص License Number	LMTNA0000199878-2021
عدد التراخيص Number of Licenses	1 - 1

م	اسم المعدة	Type of Products	الاسم التجاري Brand Name	رقم شهادة السلامة Certification Number	اسم المختبر الصادر للشهادة Name of Certification Body	بلد الصنع Place of origin
1	Solid Aluminum Façade Panel	1.51mm thick Solid Aluminium Panel having a Back-Polyester paint and a front Primer, PVDF coating with a clear Coat.	AK Cladding EVOQ	WHI21-34024402	Intertek Testing Services NA Inc	DUBAI, UAE.
2	Aluminium Standing Seam Roofing System	<ol style="list-style-type: none"> TOP SHEET 0.9 - 1.2MM THICK ALUMINIUM CORRUGATED PROFILE STANDING SEAM, TYPE SRS65, 3004 ALLOY, PVDF COATED/MILL FINISH. INSULATION: UNFACED ROCKWOOL, BETWEEN 130-430MM THICK ADN BETWEEN 35-160KG/M3 IN DENSITY HALTER/CLIP: SRS65 CLIP TOP HAT/ZEE PROFILE: 1.0 -1.5MM THICK GALVANISED STEEL. 110 -240MM HEIGHT. VAPOUR CONTROL BARRIER: POWERLON VCL 170 Liner (BR5-36): 0.7-1.5mm thick Galvanised Steel, polyester or PVDF coated or mill finished, non-perforated liner profile.	AK Cladding SRS65	WHI19-34024401	Intertek Testing Services NA Inc	DUBAI, UAE.

ملاحظة: 1. يجب ابلاغ الإدارة العامة للدفاع المدني - دبي في حالة تغيير أو تعديل في البيانات المتعلقة في الترخيص الصادر من قبل الإدارة. 2. يجب على الشركة المعتمدة لدى إدارة الدفاع المدني - دبي إبراز الترخيص السارى المفعول الخاص بالمعدات المعتمدة والصادر من قبل الإدارة للمتعامل، وعلى الشركة تحمل المسؤولية عند انتهاء الترخيص او اغلاق الشركة

- Note:**
- Any changes to the product / manufacturer / location or specification the Dubai Civil Defense - GHQ must be notified
 - Manufacturers shall produce a valid approval of products when the license expires or company closed.

