

Cristofoli
INTERNATIONAL

Light Weight Natural Stone Cladding

Design - Supply - Manufacture - Install

performance
beauty
simplicity



Introduction



Eramosa marble pilasters featuring light weight cladding

Your idea. Our solution.

We at Cristofoli subscribe to the notion that no matter how simple, complex or downright different your idea is. We are here to help.

Our cladding service is built for you:
Design. Product. Service.

Our complete service from concept design through to installation puts **Cristofoli international** at the forefront of cladding services.

We aim to simplify the complete service. For you

Features and Benefits

- Large panel format with bookmatching option
- Honeycomb backed stone produces substantial weight savings compared to traditional stone
- In-house design and manufacturing to create your unique design to your build criteria
- Rapid installation and offsite manufacturing reduces on-site time from weeks to days
- Endless natural stone options with an international sourcing team to find your desired stone and finish
- Safe contractor approved fitters to all UK sites
- Introduction of cavity insulation creates excellent sustainability credentials. Ideal for BREEAM builds



Next Retail - High Wycombe



Cornwall House - Slough

Material



Eramosa marble bookmatched panels. 1.8m x 1,2m

Material Features

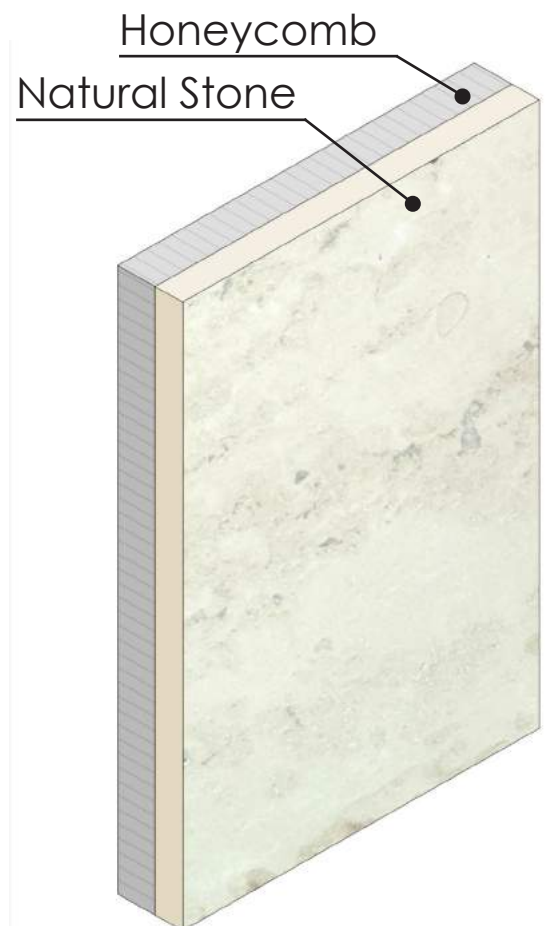
- Low aesthetic maintenance due to surface treatment
- Typically UV resistant with no fear of discolouration over time (subject to stone selection)
- Water resistant material with applied surface treatment for added security
- Typically effective at resisting freeze thaw (subject to stone selection)
- Natural finish that cannot be replicated through synthetic manufacture
- Stable material that is mechanically strong, resisting impact and scratch damage effectively
- Endless choices of material finish: bookmatching, vein cut, cross cut, the decision is yours!

A lighter feeling.

Through using honeycomb backed stone, weight and strength demands are no longer design limitations.

Large format panels become possible creating stunning visuals with no fear of cracking or failure.

It also means light weight panels, impacts less onto structural demands for your build, whilst still maintaining a "monolithic" look.



System



Jura Limestone fixed via aluminium sub-frame to steelwork

A bespoke design.

Each build comes with a bespoke aluminium sub frame system designed for you.

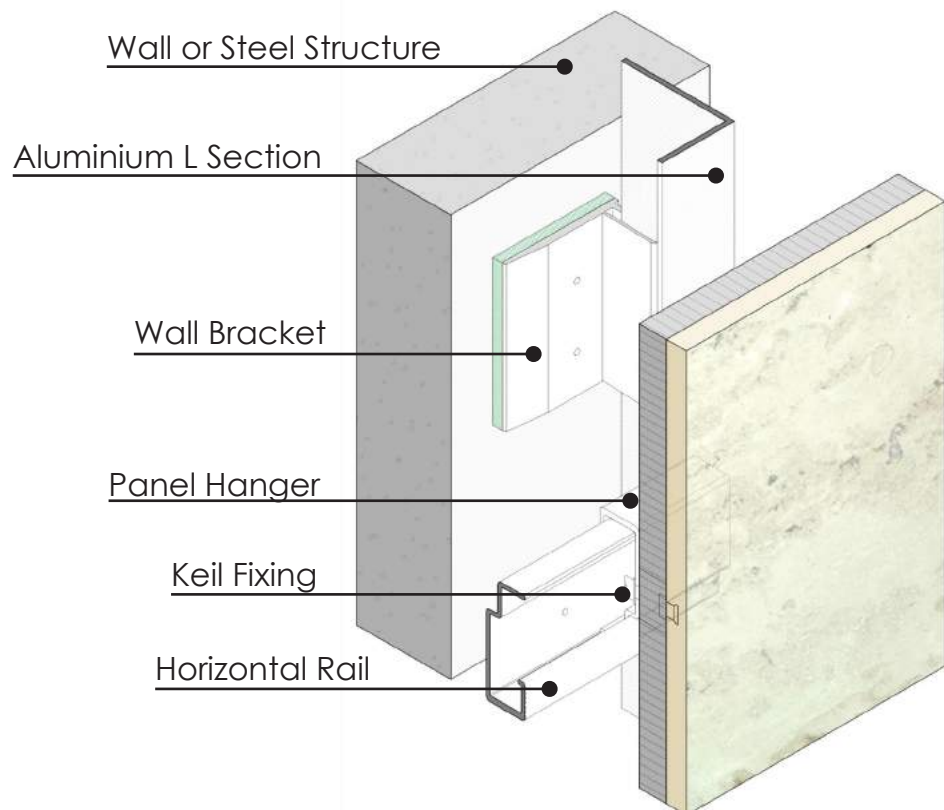
We'll take responsibility in ensuring safety and optimum design without you having to worry.

Our safe contractor approved fitters are well trained in installation, ensuring the job runs smoothly.

It's also exterior approved meaning we account thermal and wind loading into the design.

System Design

- Quick installation with no adhesives substantially minimises site impact
- Acts as a closed system preventing moisture access
- Light weight panels need less fittings, reducing overall assembly, install and cost
- Installs into existing or new structures and is scaleable
- Integration of insulation for excellent BREEAM/ sustainable credentials



Service



Installed interior Jura Limestone wall featuring bespoke finish

A personalised touch.

Synonymous with all of Cristofoli International services, we provide a complete service:

Design- Supply- Manufacture-Install

Our service is unmatched. We handle each aspect to allow you to focus on other matters.

We take your conceptual idea and turn it into reality. Advising you on suitable stone and providing you with a complete solution.

Design

Take your design brief and estimate build time material finish.

In-house architects can prepare renders to assist in choosing an ideal colour and material finish.

Supply & Manufacture

Our international sourcing team locates the required stone blocks to be cut and bonded.

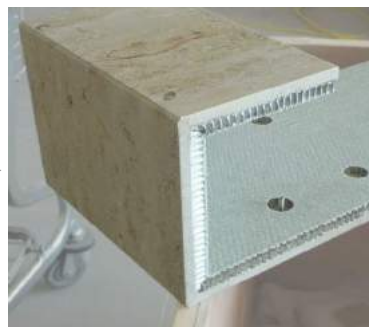
Stone slabs profiled, assembled and packaged to be sent to your site.

Install

Manufactured parts delivered to site.

In tandem, aluminium frame is installed to existing wall or steel structure.

All parts fitted using our safe contractor approved fitters.



Bridging the gap between design and reality

Custom Finishes

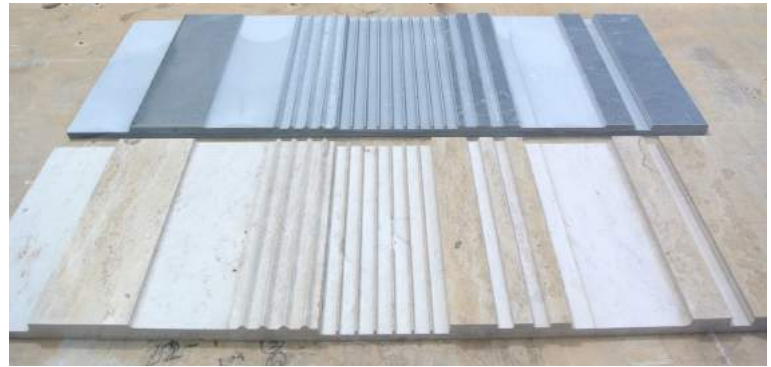
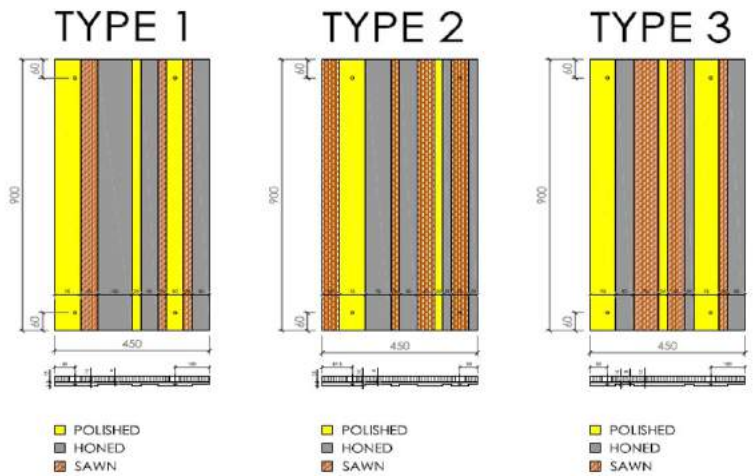
Next Retail - High Wycombe

Our in-house CNC and WaterJet technology allows us to create unique finishes at your request.

The client requested a three dimensional effect, requiring an extensive "trial and error" process of varying natural stones and surface finishes to achieve the desired finish.

As opposed to traditional honed or polished finish, we proposed an alternate solution.

Using CNC 5 Axis technology and various cutting heads we created a three tone finish. Combining the three surface finishes and fluctuating material depths helped enhance the desired three dimensional effect.



Finished Product at cash registers interior



Material Finishes

We at Cristofoli International have global connections to the stone market giving us access to an endless selection of materials. We colour match your requested material to find the best suitable option in terms of material properties and finish.

Whilst material choice is endless, so too is finish, below is a selection of available finishes to help achieve your unique artistic vision:



Brushed



Corretecia



Laser



Polished



Printed



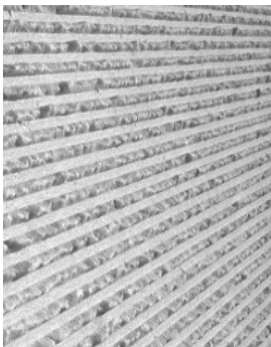
Rigatto with 3D effect



Rockfinish



Satin



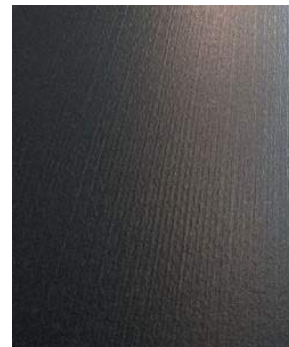
Scored



Textile



Water flaming



Wood



Natural Stone holds a beauty that lasts an eternity but is renowned for being heavy and awkward to work with.

By bonding a thin layer of stone to a lightweight carrier panel **CRISTOFOLI INTERNATIONAL** offers you the practical solution.

Thanks to **KEIL** attachment technology we can provide a secure fixing directly into the stone. Easy handling and installation without compromising strength or elegance.

Our Lightweight Stone Panels are suitable for numerous applications including building interiors, cladding and perfect for fast installations where weight has to be kept to a minimum.

Dimension slab: cut to size to project requirement
Thickness: subject to material, 12mm - 15mm stone

Cristofoli International Ltd

Unit 19 / Stephenson road / South Hants industrial park / Calmore / Southampton / SO40 3SA

Telephone : +44 (0) 2380 661234

Fax : +44 (0) 2380 661345

Email : sales@cristofoli.net

www.cristofoli.net



We pride ourselves as being a 'solution driven' company and make every effort possible to achieve project timing commitments, budgetary restrictions and assist you to meet your objectives without compromising your interests