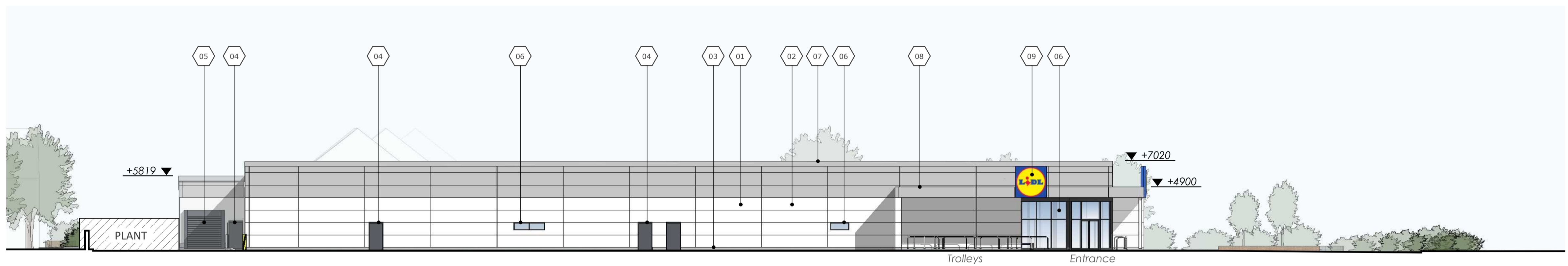
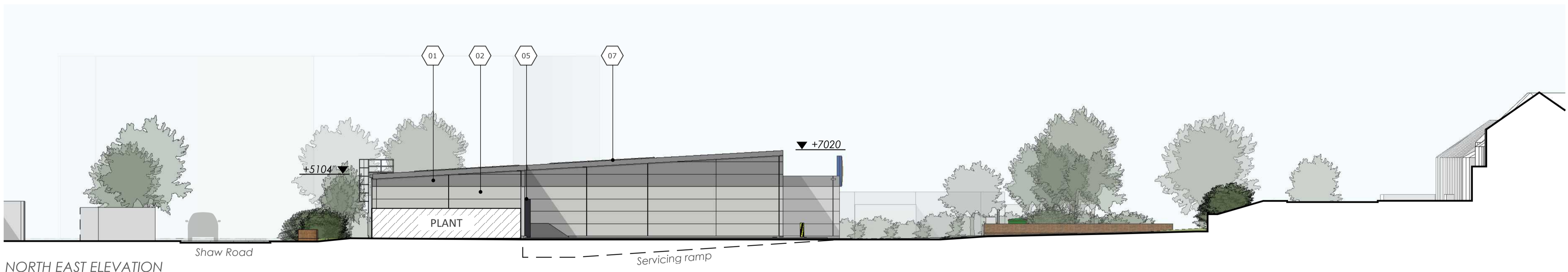


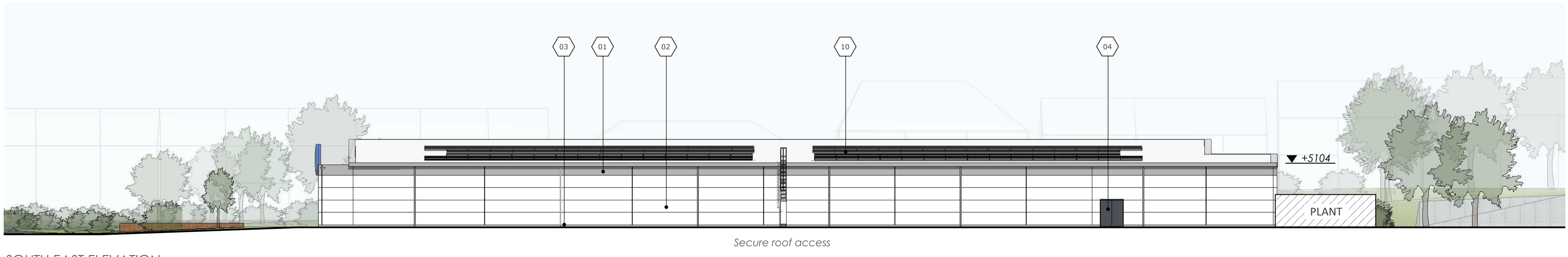
SOUTH WEST ELEVATION



NORTH WEST ELEVATION



NORTH EAST ELEVATION



SOUTH EAST ELEVATION

KEY	
01	- Aluminium composite cladding panel Colour: White (RAL 9010)
02	- Aluminium composite cladding panel Colour: Silver (RAL 9006)
03	- Textured render plinth Colour: Light grey (textured)
04	- PPC steel Door Colour: Grey (RAL 7024)
05	- Servicing dockshelter Frame: Dark grey (RAL 7024)
06	- Aluminium framed glazing system Colour: Grey (RAL 7024)
07	- PPC aluminium trim Colour: Silver (RAL 9006)
08	- PPC aluminium canopy Colour: Silver (RAL 9006)
09	- Internally illuminated sign
10	- Photovoltaic panels

Signage shown is indicative and will be sought through a separate advertisement application.

CLIENT
Lidl Great Britain Limited

PROJECT
Wolverhampton
Bushbury Lane

TITLE
Proposed Elevations

DRAWING STATUS
Planning

DRAWN WF CHECKED DC

SCALE 1:200 @ A1

DATE December 2021

Whittam Cox ARCHITECTS
whittamcox.com

Chesterfield / 01246 260261
London / 020 3388 0019
Leeds / 01133 366018

JOB NO.	DRAWING NO.	REV
210006	PL-06	-