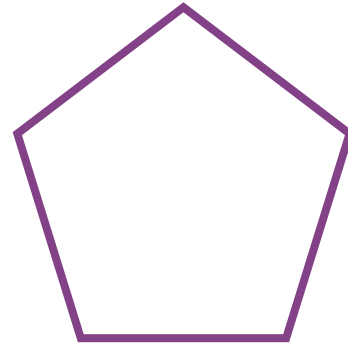
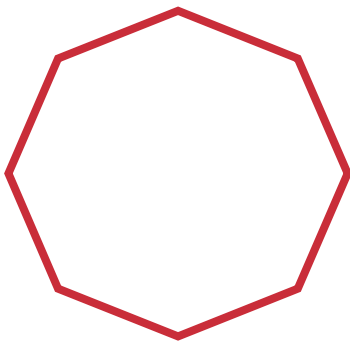
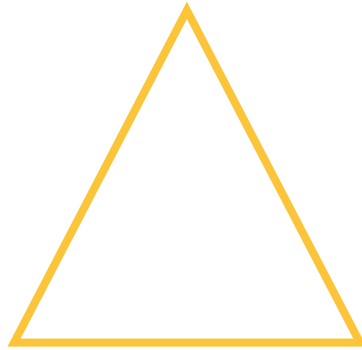
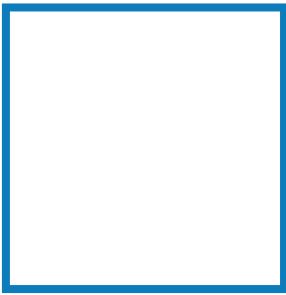


# Mitt symmetrihefte



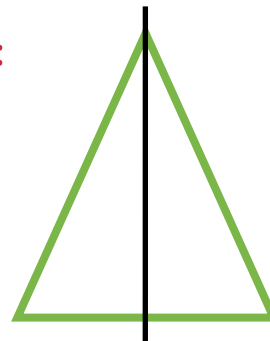
Navn \_\_\_\_\_

Klasse \_\_\_\_\_

# Symmetri

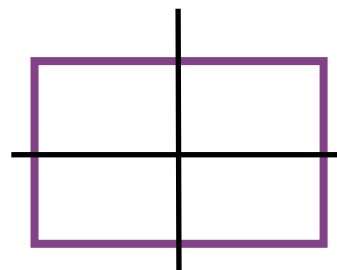
Når noe er symmetrisk betyr det at en strek kan settes gjennom figuren. Figuren vil være lik på begge sider av streken.

Eksempel:



En figur kan ha flere enn én symmetrilinje.

Eksempel:

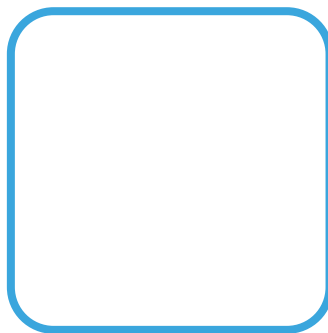
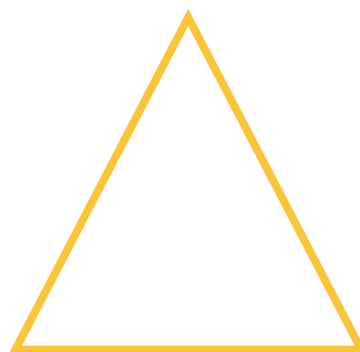
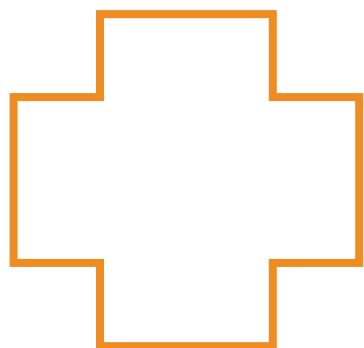


Man kan se en symmetrilinje som et speil.



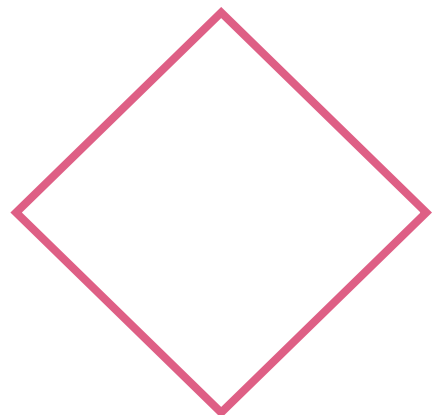
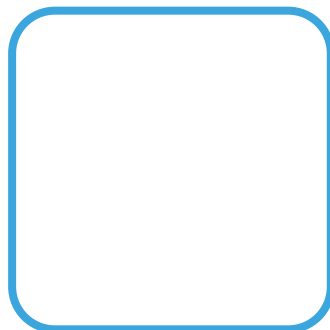
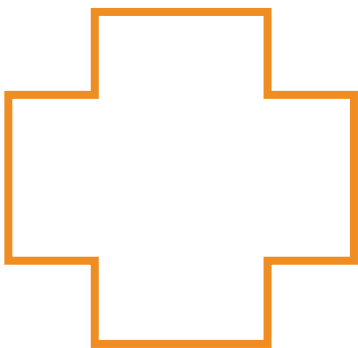
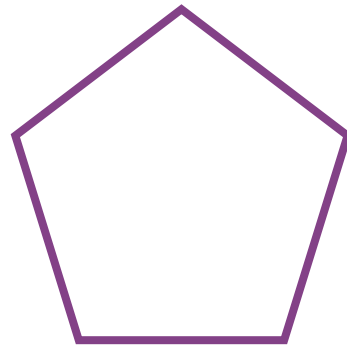
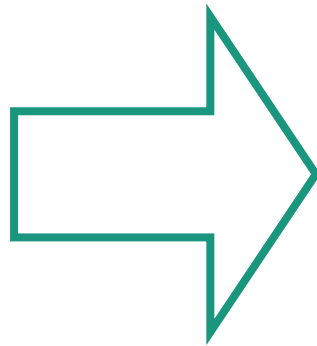
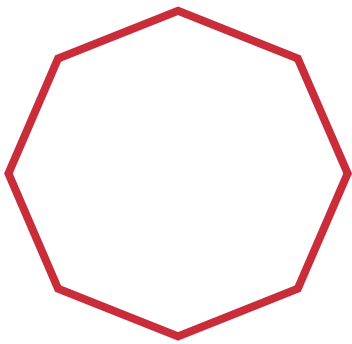
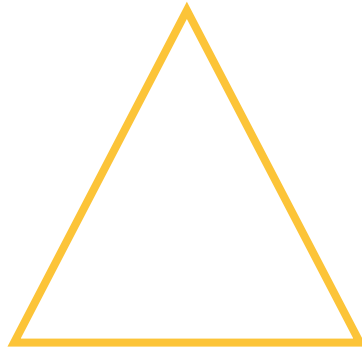
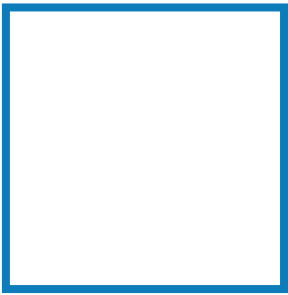
# Lær symmetri

Tegn så mange symmetrilinjer du kan.



# Symmetri

Tegn så mange symmetrilinjer du kan.

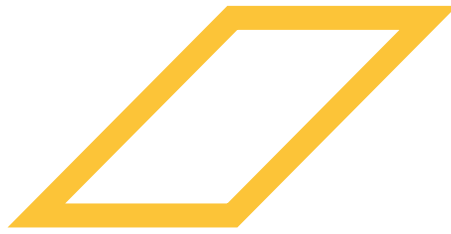


# Symmetrisk?

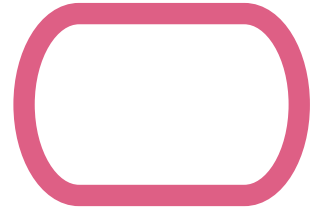
Er disse figurene symmetriske?  
Kryss av for ja eller nei.



Ja  Nei



Ja  Nei



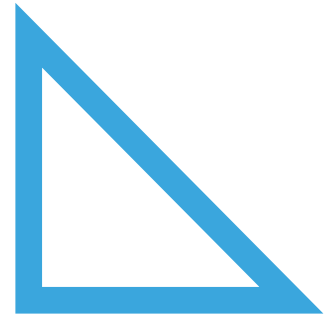
Ja  Nei



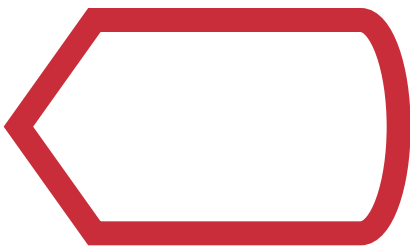
Ja  Nei



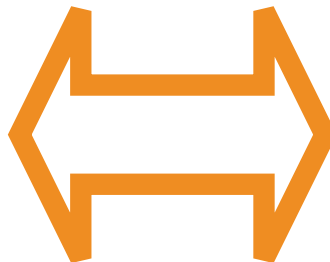
Ja  Nei



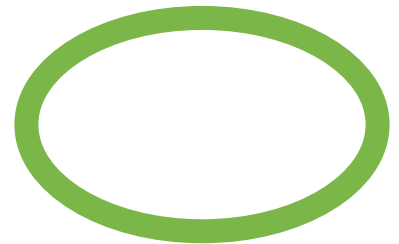
Ja  Nei



Ja  Nei



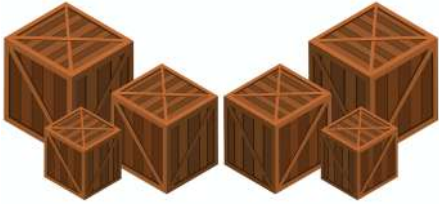
Ja  Nei



Ja  Nei

# Symmetri i verden

Tegn symmetrilinjen på bildene.



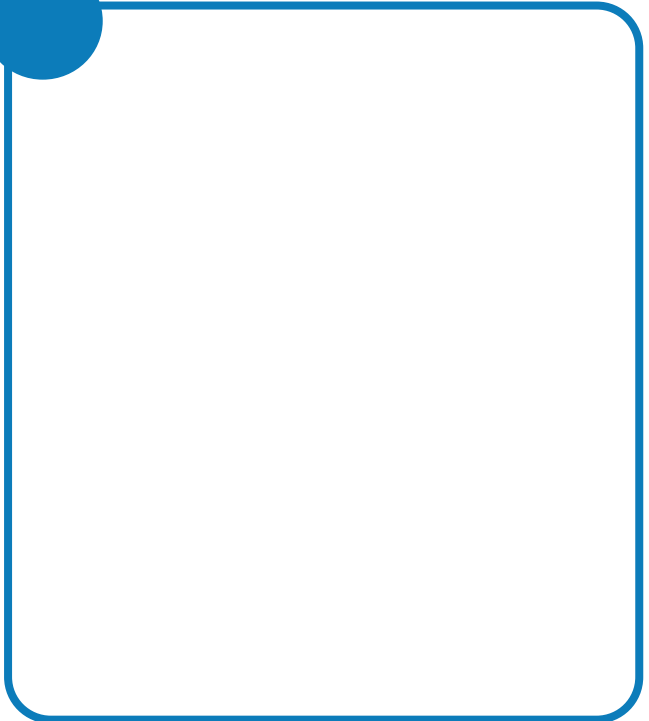
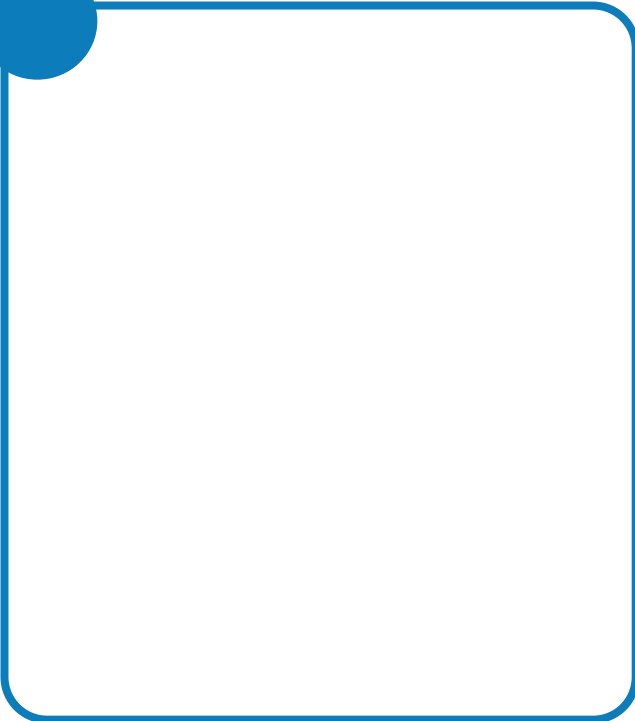
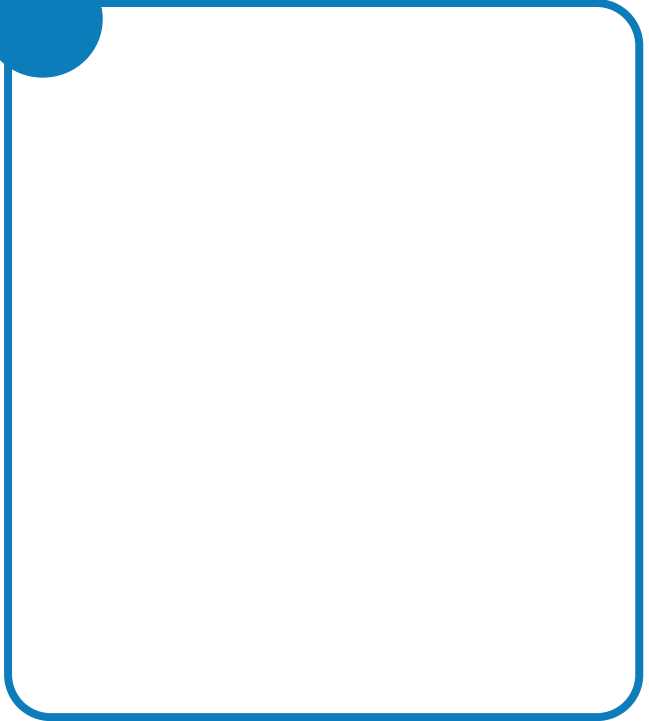
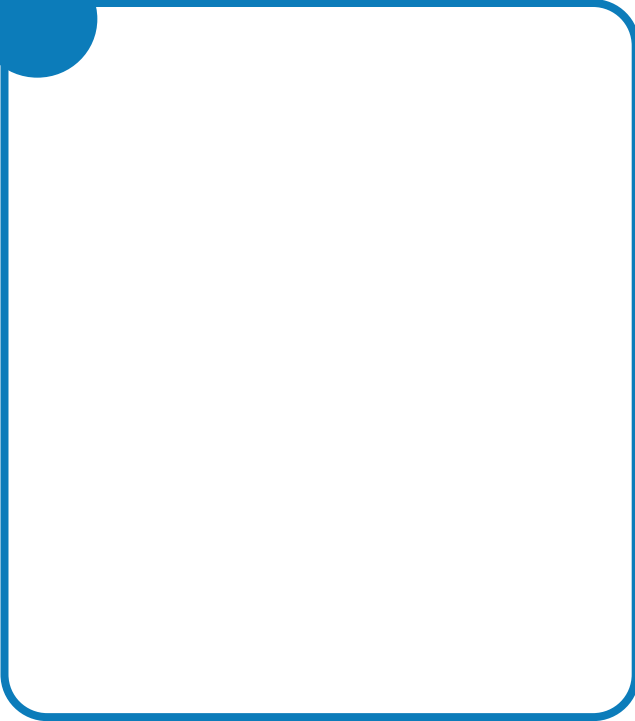
---

Tegn den andre halvdelen av figuren, så den er symmetrisk.



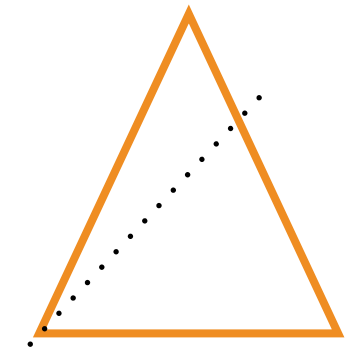
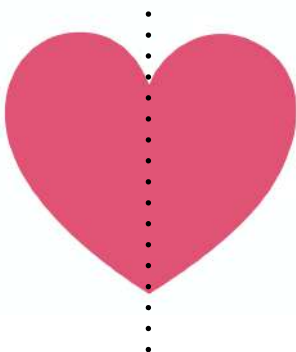
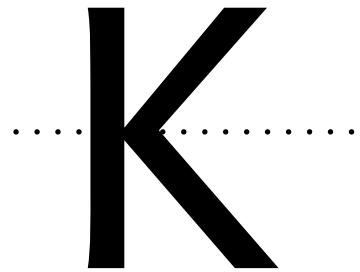
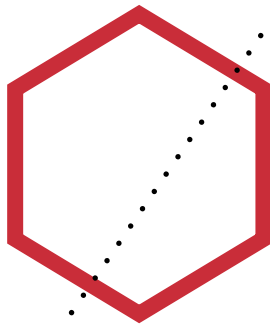
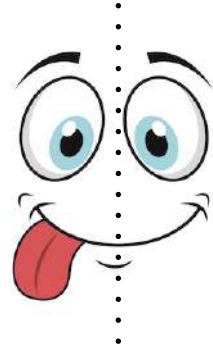
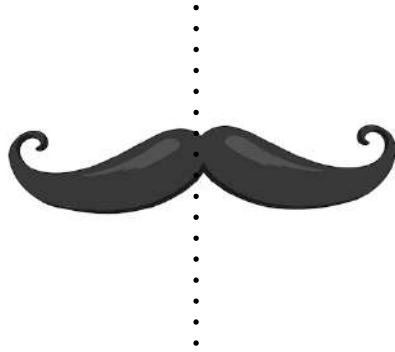
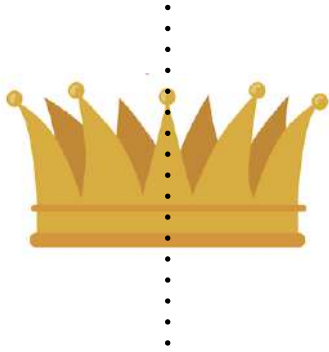
# Tegn

Tegn 4 symmetriske figurer.



# Tegn

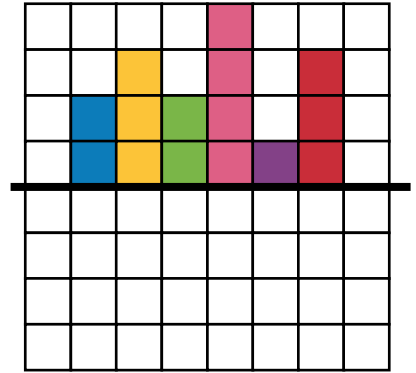
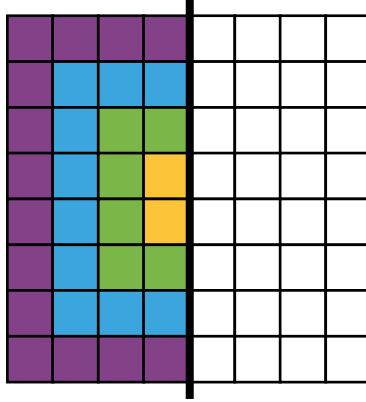
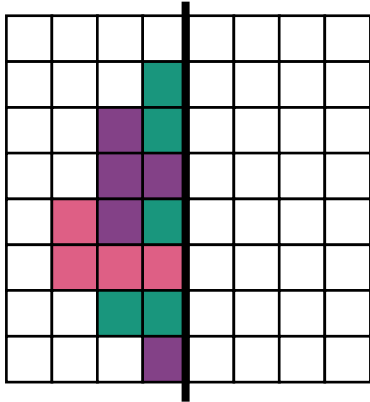
Sett et kryss på de figurene, hvor  
symmetrilinjen ikke passer.



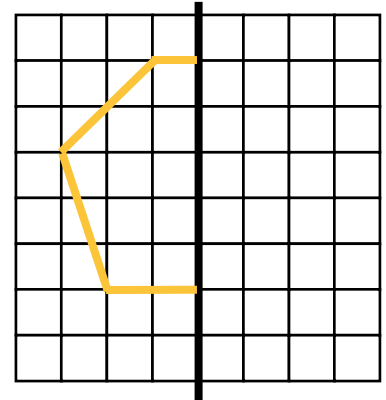
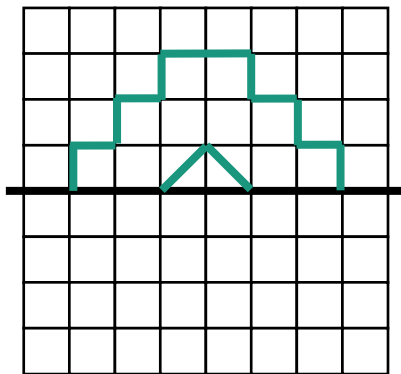
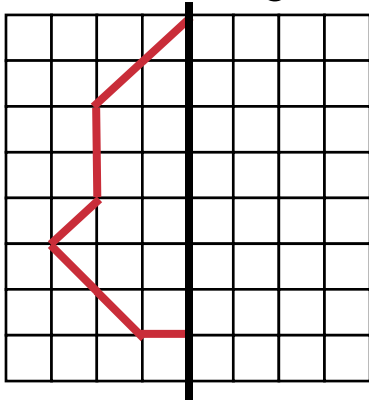


# Tegn og fargelegg

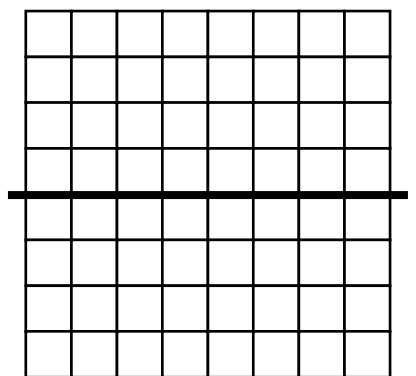
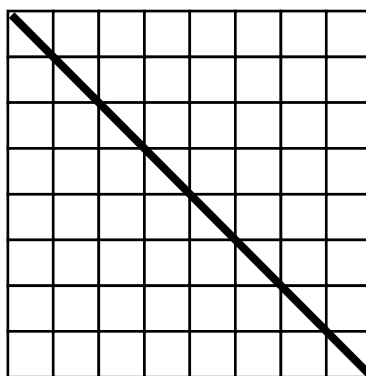
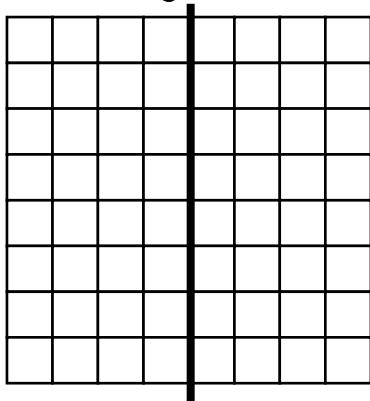
Fargelegg rutene slik at de er symmetriske til den andre siden



Tegn, så sidene er symmetriske



Tegn figurer selv, som er symmetriske gjennom symmetrilinjen



# Symmetrispill

Klipp ut brikkene, snu dem og trekk to som hører sammen.

