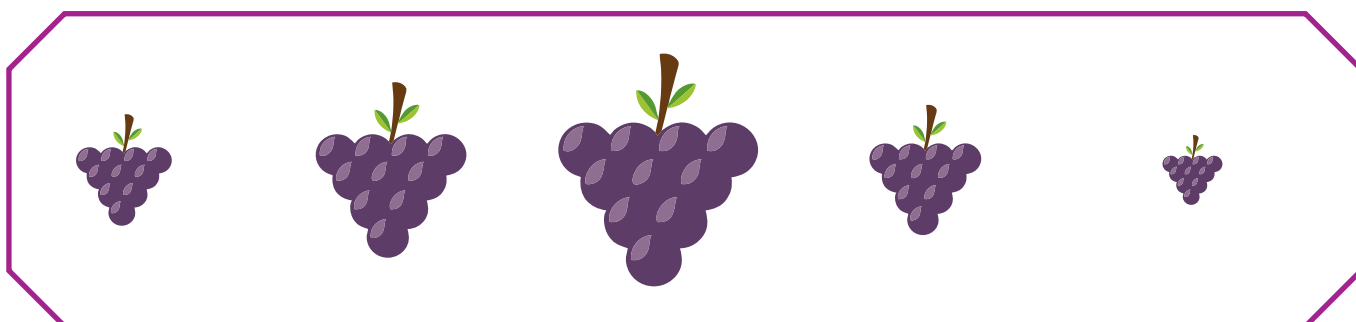
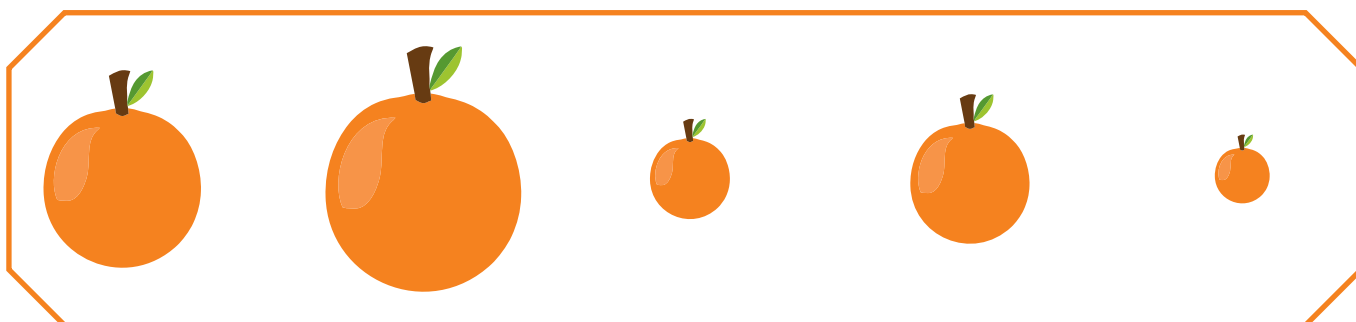
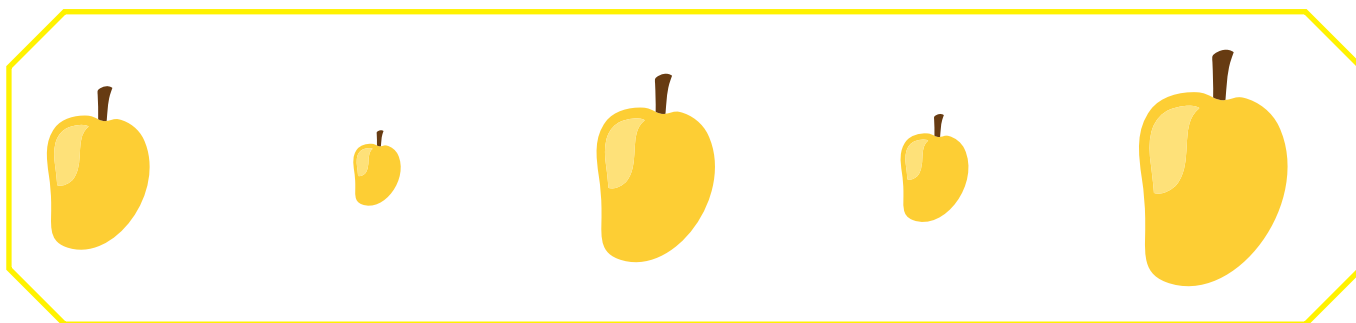
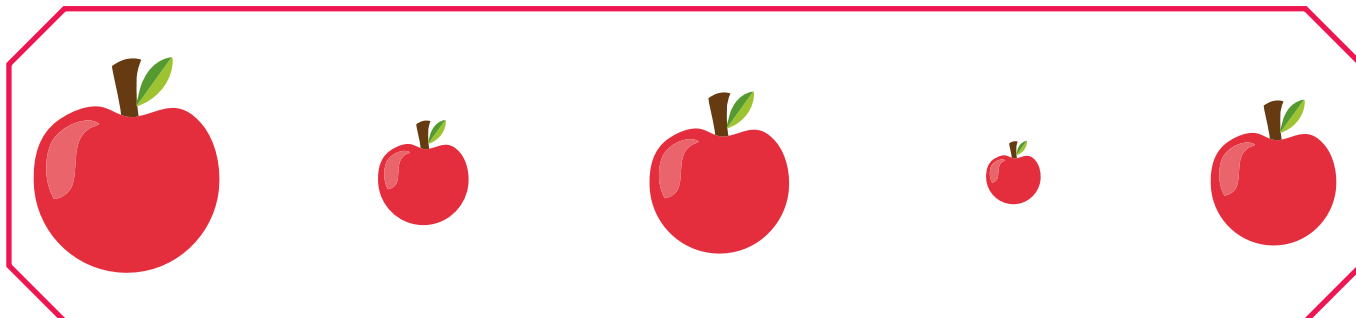


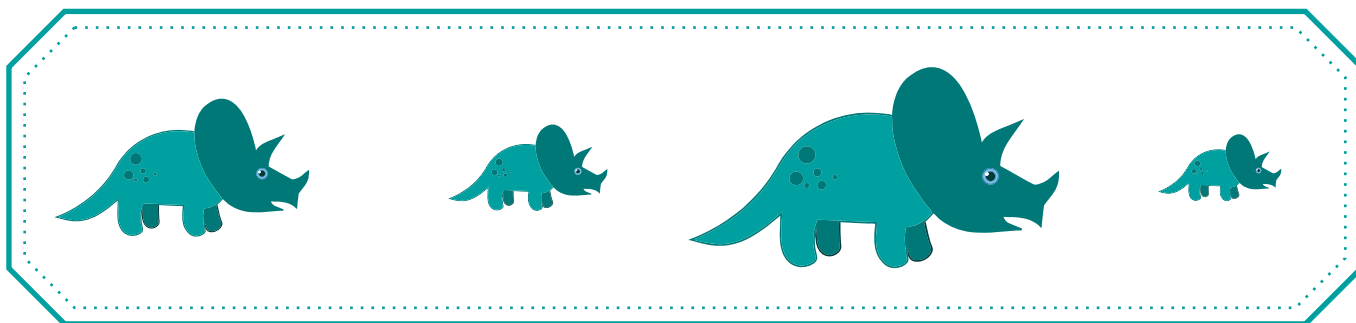
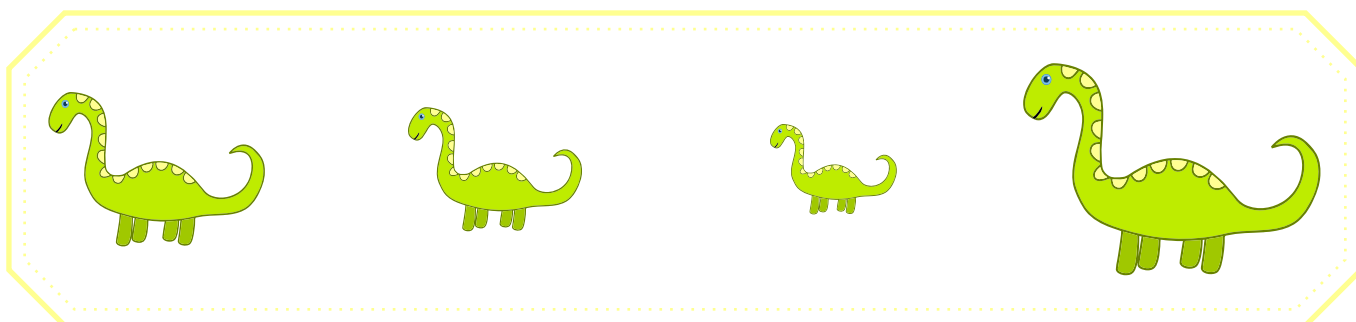
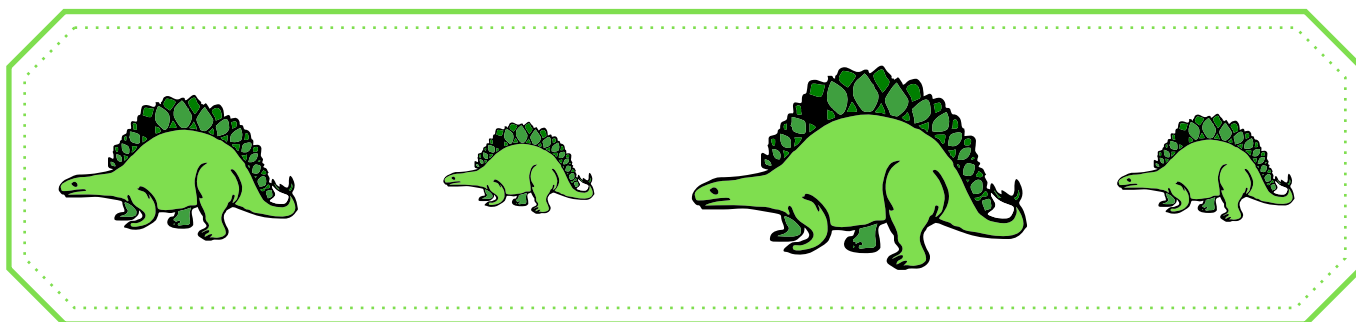
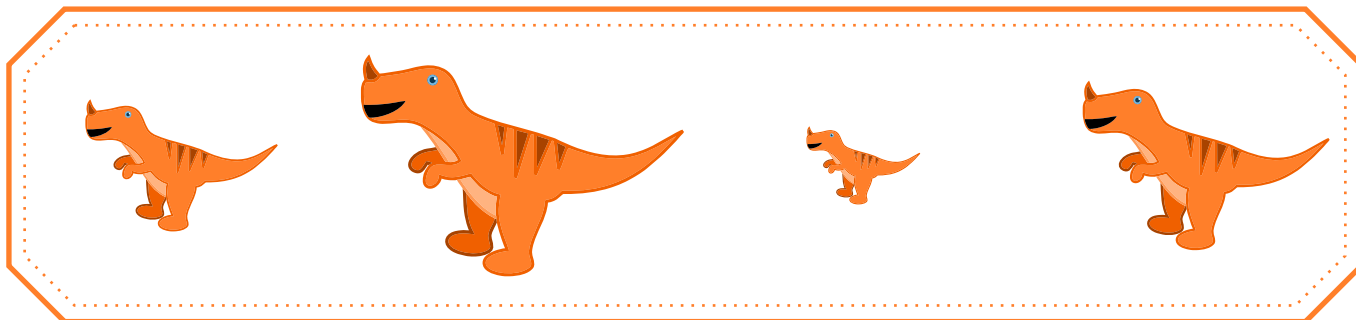
# Størst

Tegh en ring rundt den største i rekken.



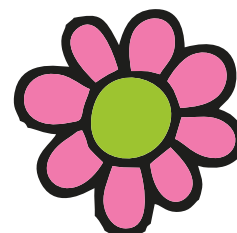
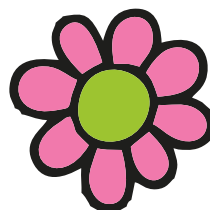
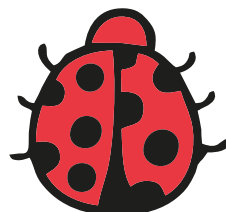
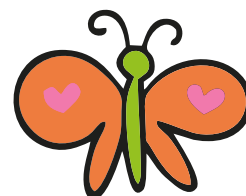
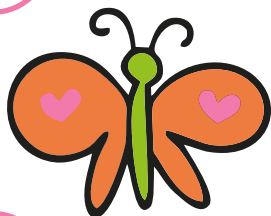
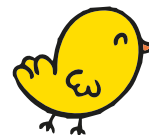
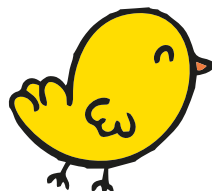
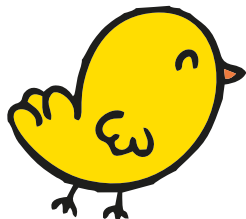
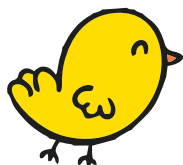
# Størst

Tegn en ring rundt den største i rekken.



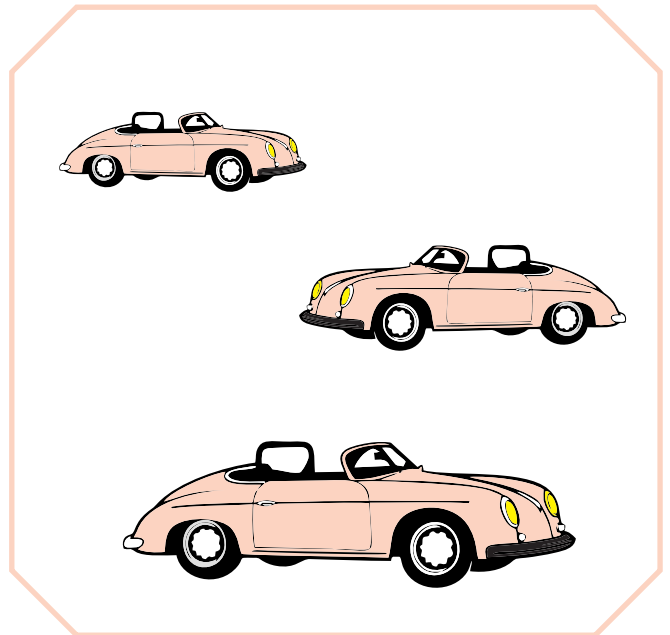
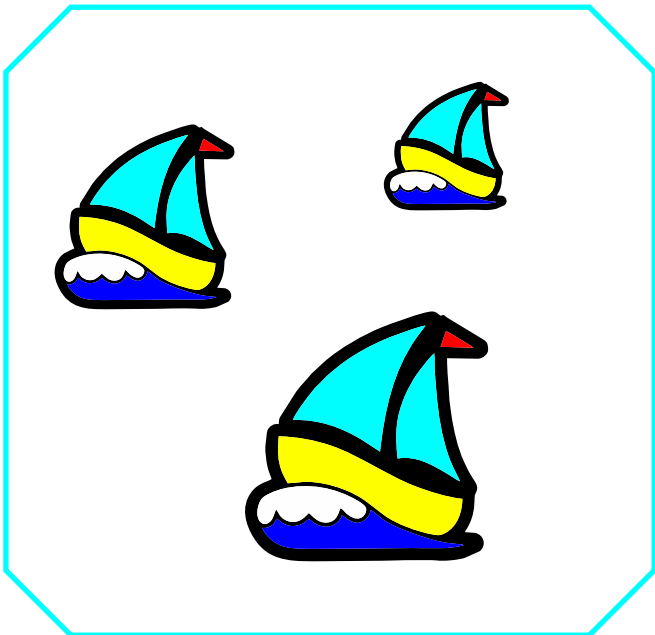
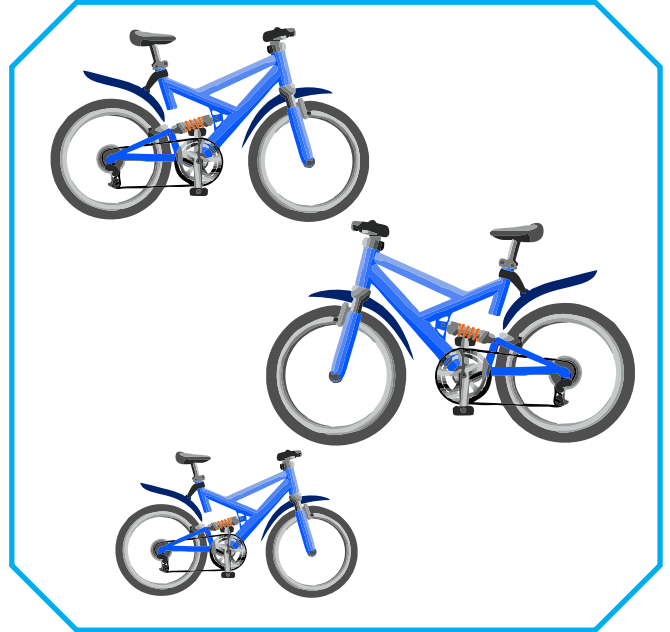
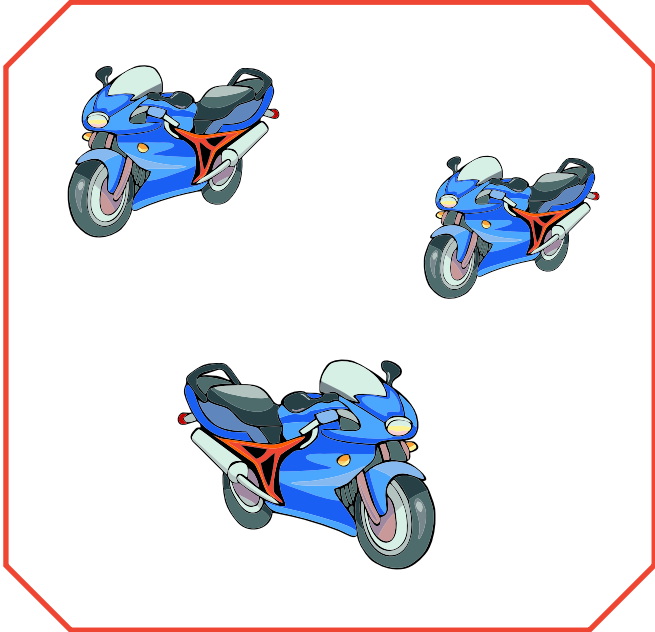
# Størst

Tegn en ring rundt den største i rekken.



# Størrelse

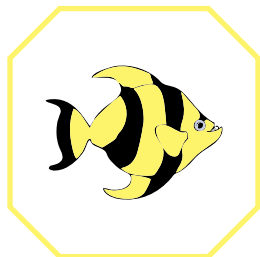
Tegn et kryss over den største og en ring rundt den minste.



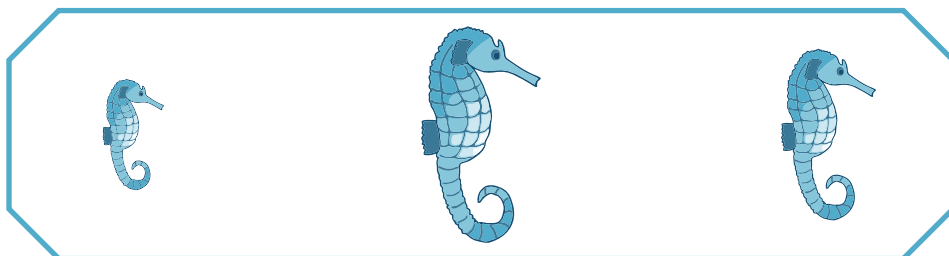
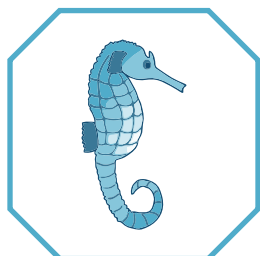
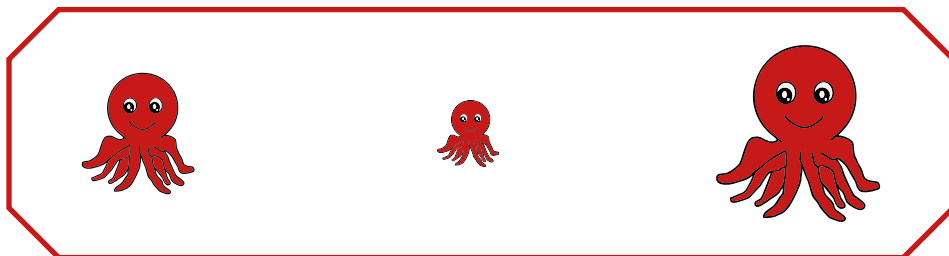
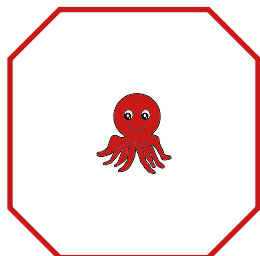
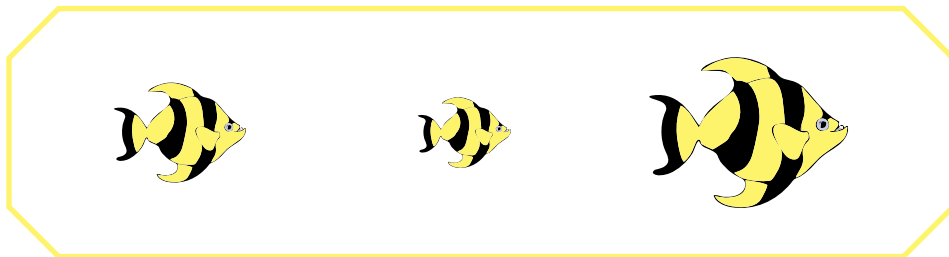
# Større

Tegn en ring rundt den figuren i "B" som er større enn figuren i "A".

A

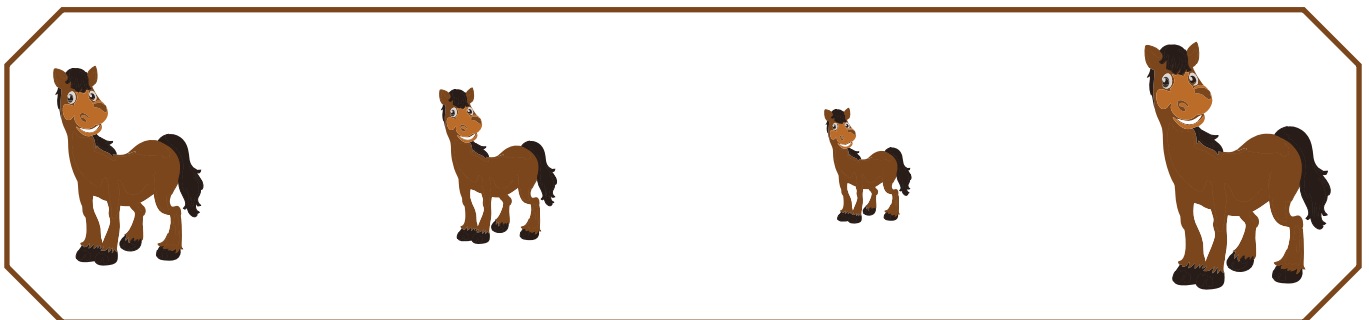
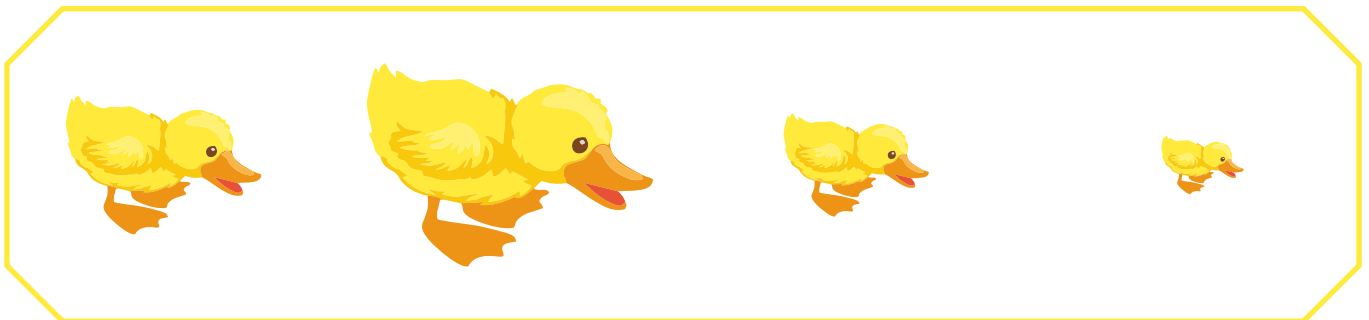
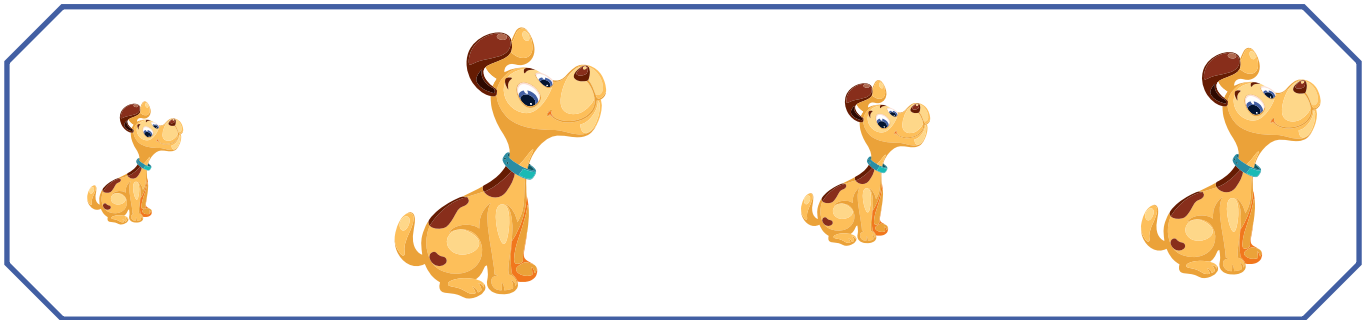
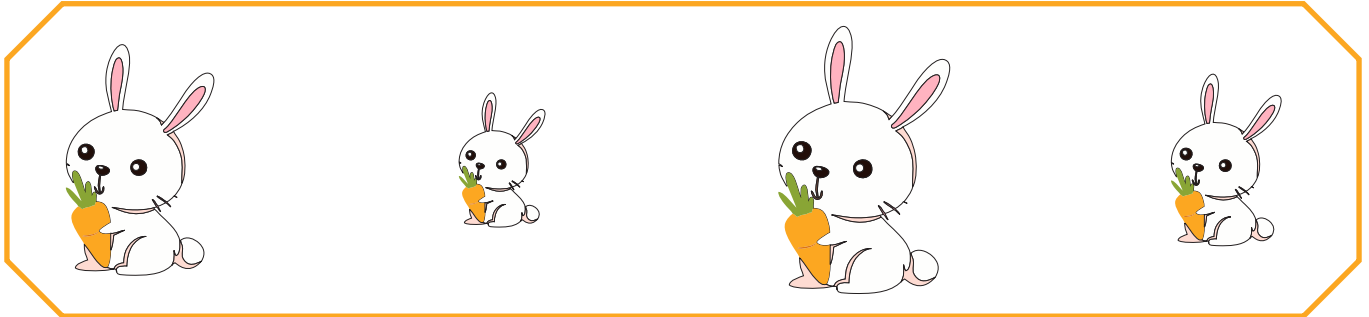


B



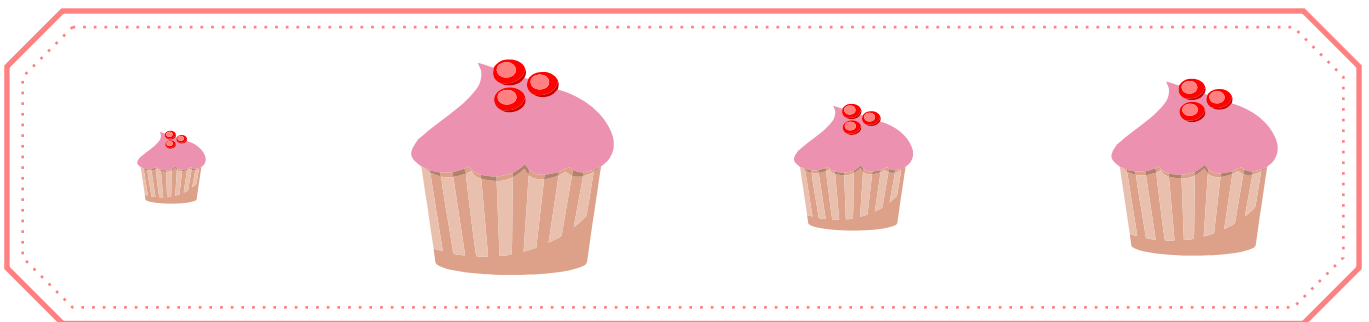
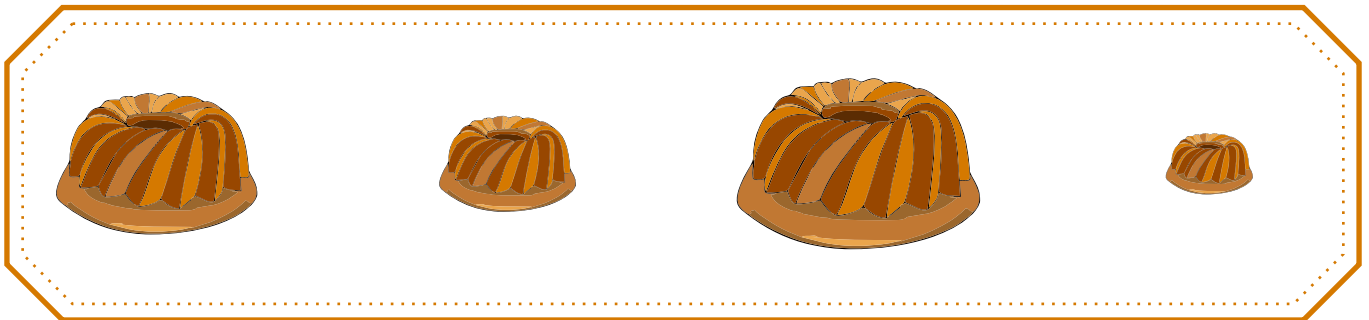
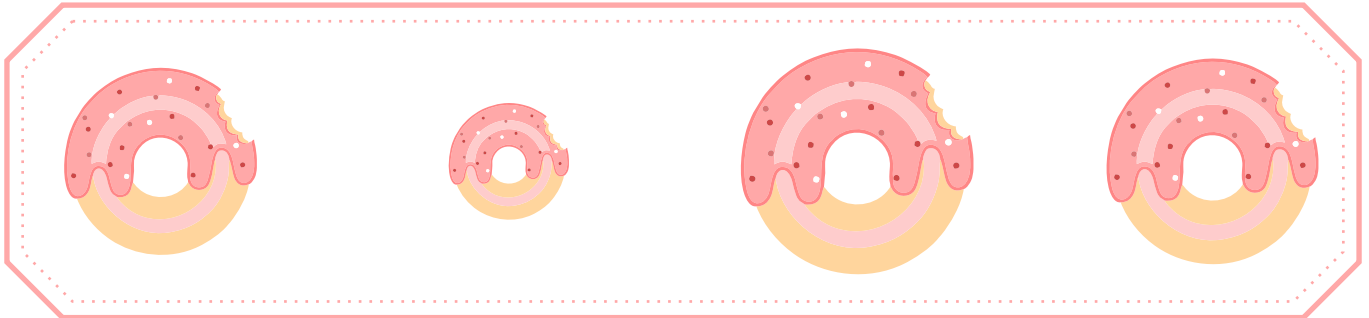
# Minst

Tegn en ring rundt den minste i rekken.



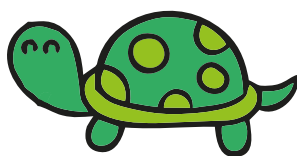
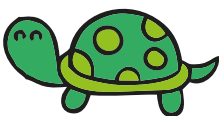
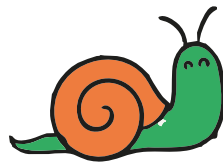
# Minst

Tegn en ring rundt den minste i rekken.



# Minst

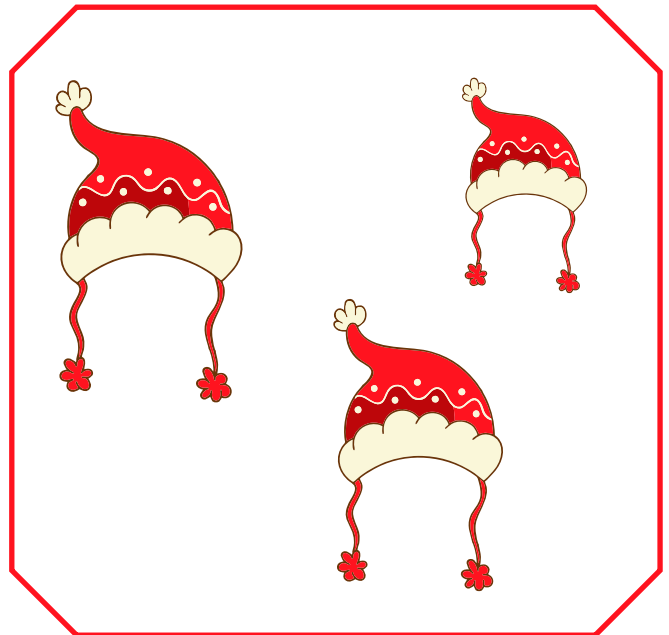
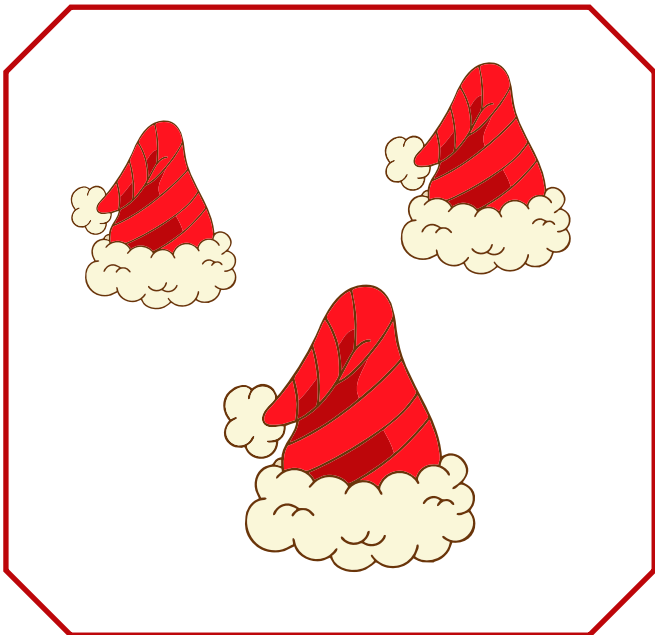
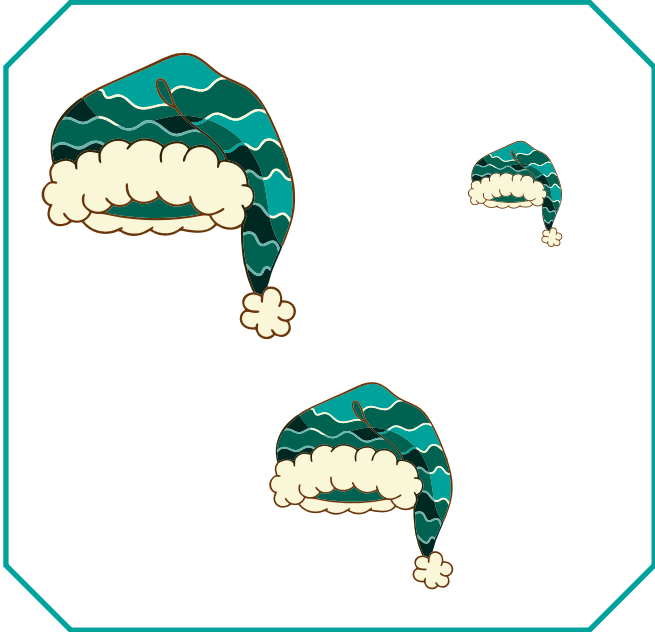
Tegn en ring rundt den minste i rekken.





# Minst

Tegn et kryss over den største og en ring rundt den minste.



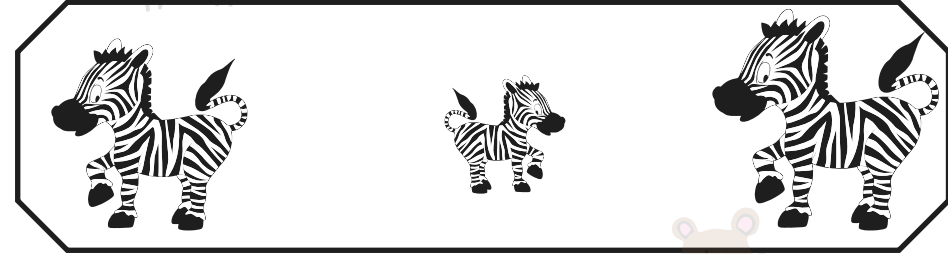
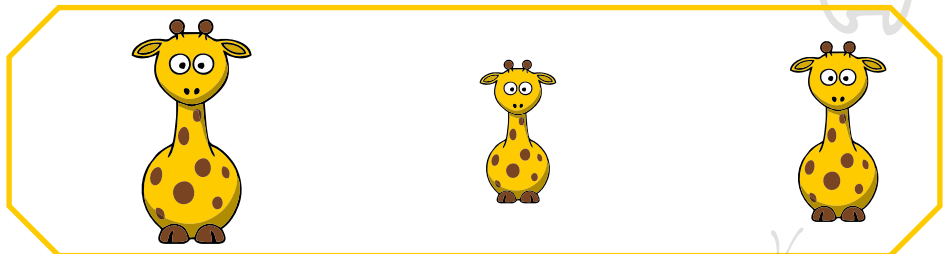
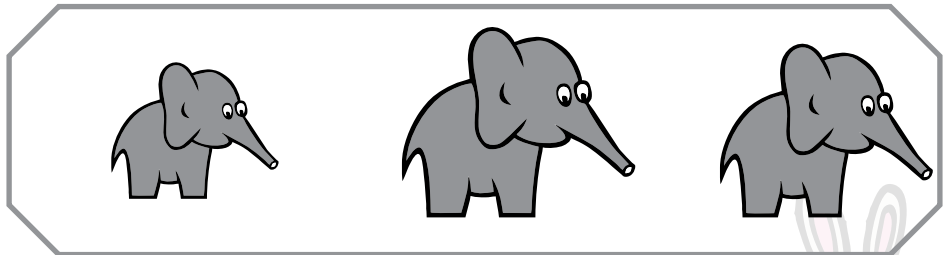
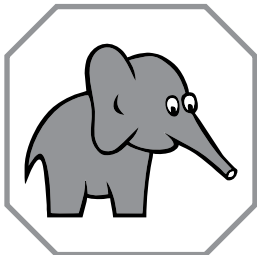
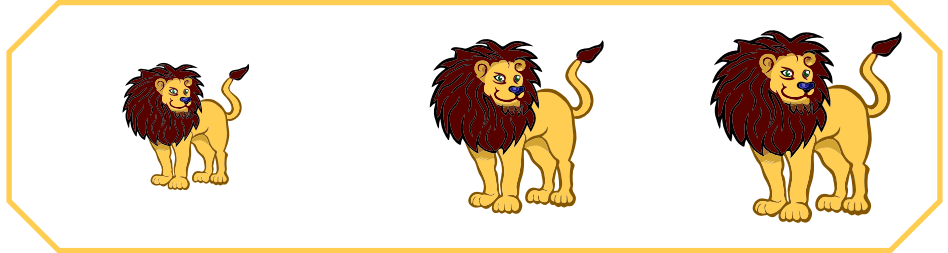
# Mindre

Tegn en ring rundt den figuren i "B" som er mindre enn figuren i "A".

A

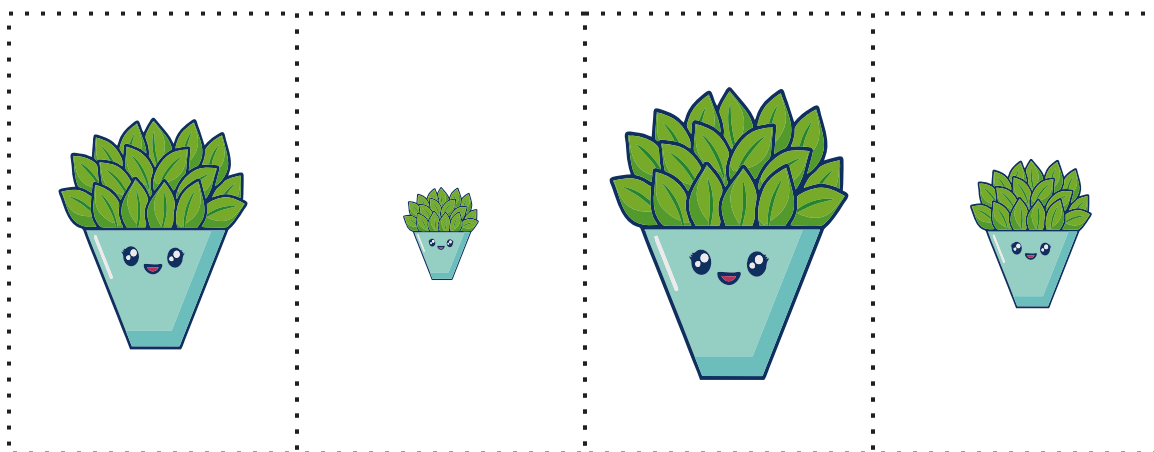
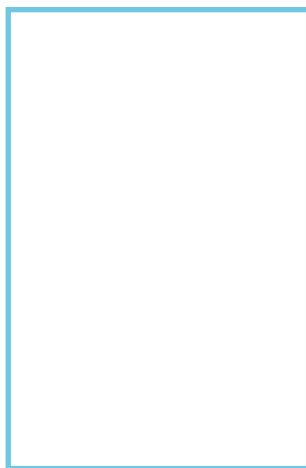
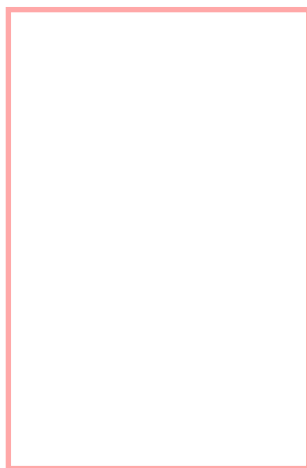
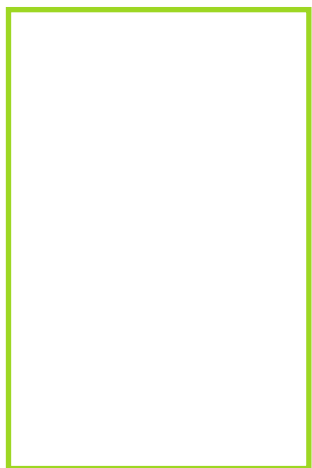


B



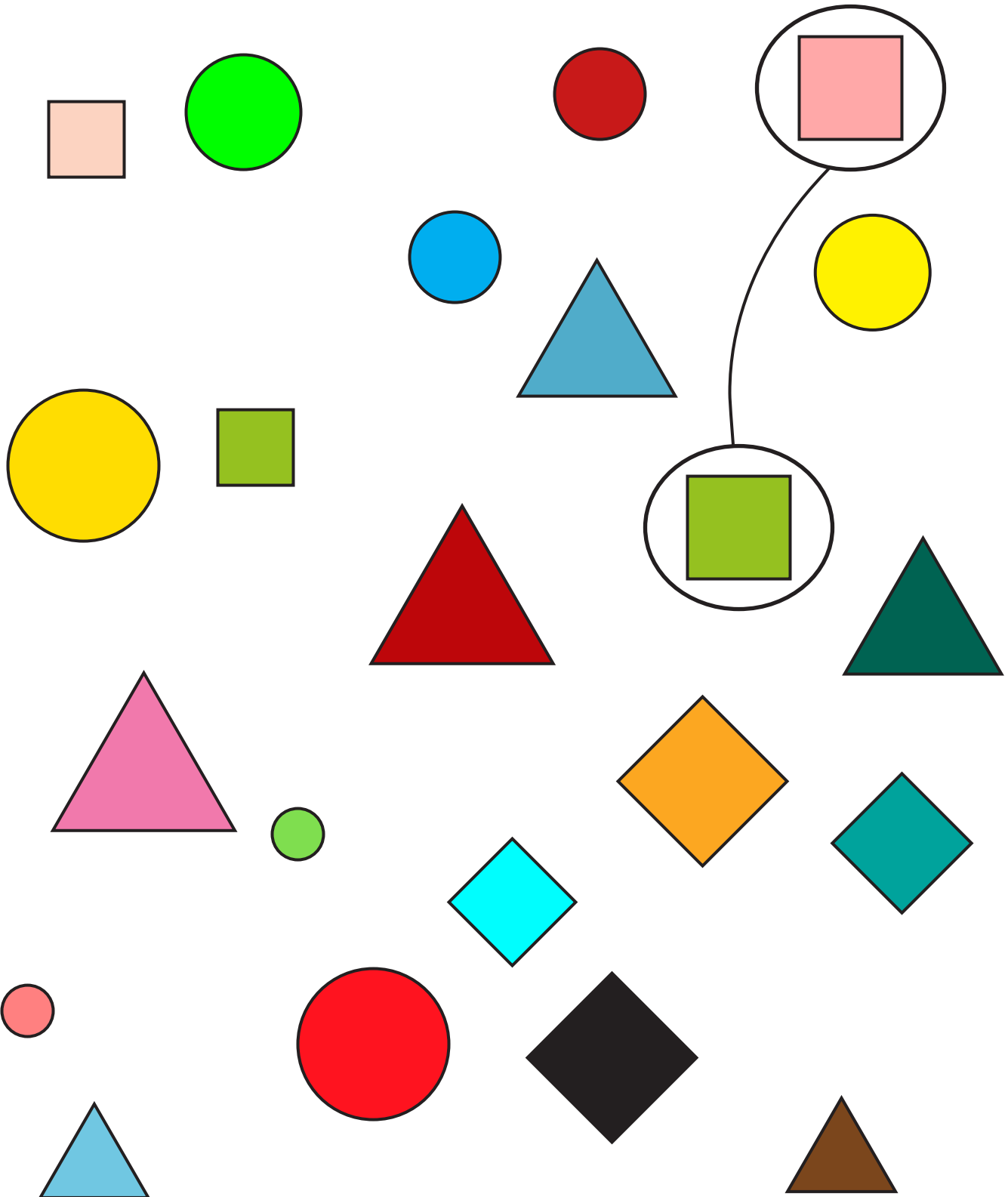
# Størrelsesorden

Klipp ut bildene og sett de i størrelsesorden.



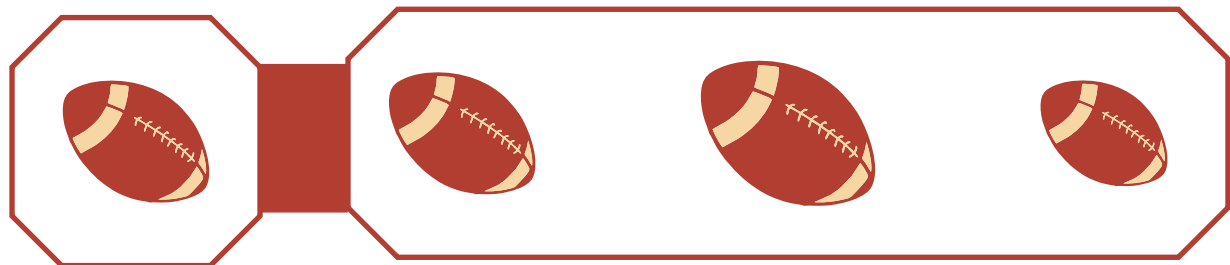
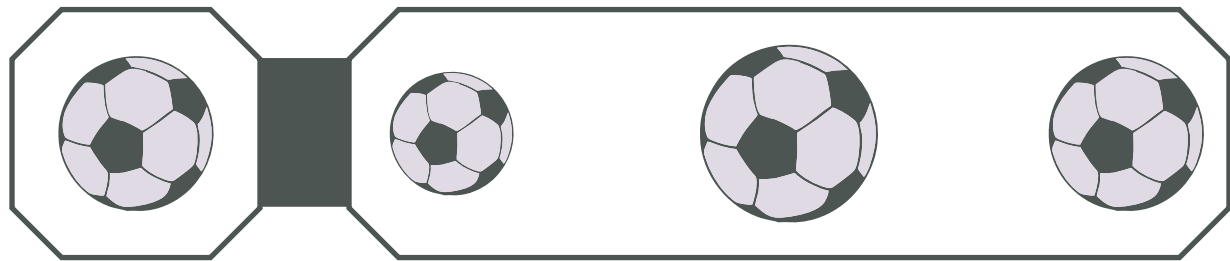
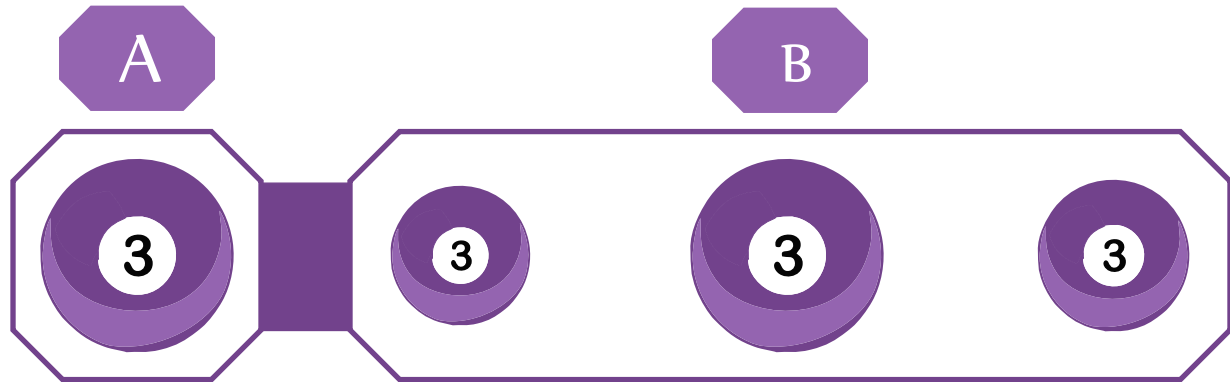
# Samme størrelse

Tegn en strek mellom figurene som har samme størrelse.



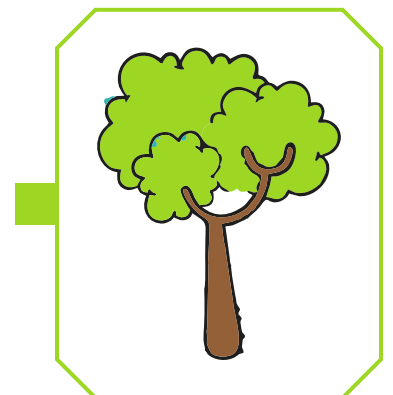
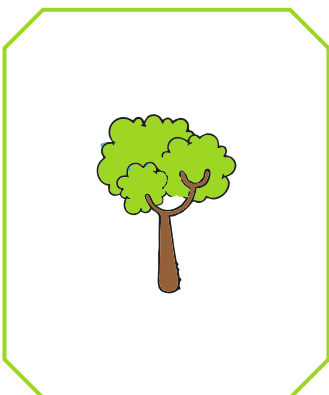
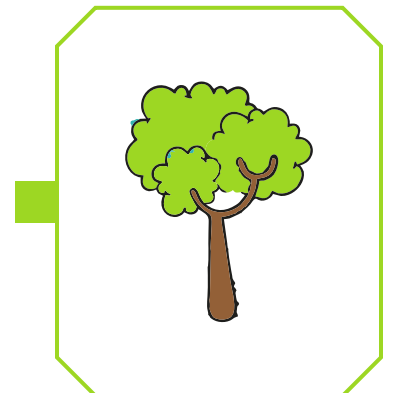
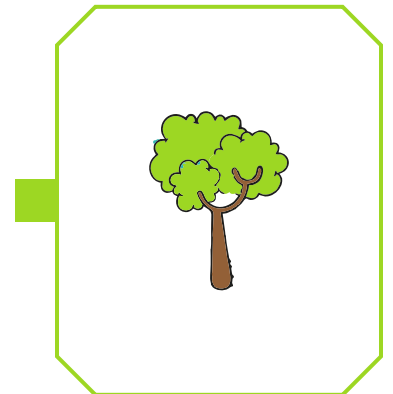
# Samme størrelse

Tegn en ring rundt den figuren i "B" som er mindre enn figuren i "A".



# Samme størrelse

Tegn en strek mellom bildene som har samme størrelse.



# Samme størrelse

Tegn en ring rundt de to bildene som har samme størrelse.



# Samme størrelse

Klipp ut bildene nederst og sett hver av de under bildet i samme størrelse.

