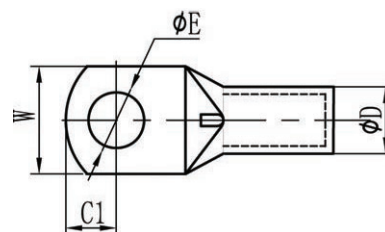
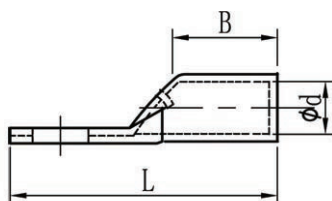


TERMINALS

NON-INSULATED RING TERMINALS GT TUBE

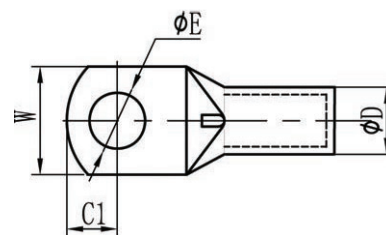
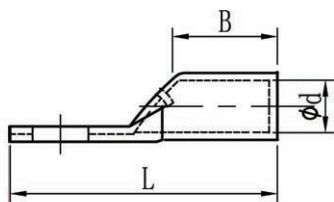
MATERIAL: Copper
PLATING: Electro tin plated
INSULATION: None
OPERATING TEMP: -55 - 150°C

With inspection hole
RoHS compliant



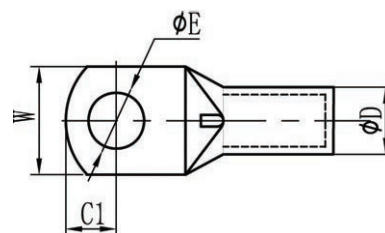
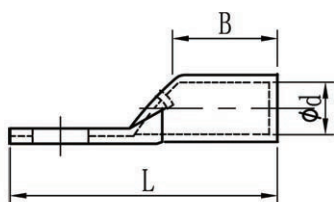
PRT NR.	WIRE RANGE AWG	WIRE RANGE (MM ²)	Ø E	W	L	B	D	D1	UL	PACKED
GT 1.5-3	22~16 AWG	0.5~1.5 mm ²	3.2	8.7	19	7	4	2.4		100
GT 1.5-4	22~16 AWG	0.5~1.5 mm ²	4.3	8.7	19	7	4	2.4		100
GT 1.5-5	22~16 AWG	0.5~1.5 mm ²	5.3	8.7	19	7	4	2.4		100
GT 1.5-6	22~16 AWG	0.5~1.5 mm ²	6.4	10	20	7	4	2.4		100
GT 2.5-4	16~14 AWG	1.5~2.5 mm ²	4.3	8.7	19	7	4.3	2.7		100
GT 2.5-5	16~14 AWG	1.5~2.5 mm ²	5.3	8.7	19	7	4.3	2.7		100
GT 2.5-6	16~14 AWG	1.5~2.5 mm ²	6.4	10.3	21	7	4.3	2.7		100
GT 2.5-8	16~14 AWG	1.5~2.5 mm ²	8.3	12	23	7	4.3	2.7		100
GT 4-4	12 AWG	4 mm ²	4.3	8.7	21.5	9.5	4.8	3.1		100
GT 4-5	12 AWG	4 mm ²	5.3	8.7	21.5	9.5	4.8	3.1		100
GT 4-6	12 AWG	4 mm ²	6.4	10.3	23.5	9.5	4.8	3.1		100
GT 4-8	12 AWG	4 mm ²	8.3	12.5	28.5	9.5	4.8	3.1		100
GT 6-4	10 AWG	6 mm ²	4.3	10.3	26	10	5.5	3.8		100
GT 6-5	10 AWG	6 mm ²	5.3	10.3	26	10	5.5	3.8		100
GT 6-6	10 AWG	6 mm ²	6.4	10.3	26	10	5.5	3.8		100
GT 6-8	10 AWG	6 mm ²	8.3	13.9	29	10	5.5	3.8		100
GT 6-10	10 AWG	6 mm ²	10.5	13.9	29	10	5.5	3.8		100
GT 10-4	8 AWG	10 mm ²	4.3	11.9	27.5	11.5	6.9	4.7		100
GT 10-5	8 AWG	10 mm ²	5.3	11.9	27.5	11.5	6.9	4.7		100
GT 10-6	8 AWG	10 mm ²	6.4	11.9	27.5	11.5	6.9	4.7		100
GT 10-8	8 AWG	10 mm ²	8.3	13.5	30.5	11.5	6.9	4.7		100
GT 10-10	8 AWG	10 mm ²	10.5	15	30.5	11.5	6.9	4.7		100
GT 10-12	8 AWG	10 mm ²	13.2	17	34	11.5	6.9	4.7		100
GT 16-5	6 AWG	16 mm ²	5.3	12	27.5	12	7.8	5.6		100
GT 16-6	6 AWG	16 mm ²	6.4	12	27.5	12	7.8	5.6		100
GT 16-8	6 AWG	16 mm ²	8.3	13.5	31	12	7.8	5.6		100
GT 16-10	6 AWG	16 mm ²	10.5	16	32	12	7.8	5.6		100
GT 16-12	6 AWG	16 mm ²	13.2	17	37.5	12	7.8	5.6		100
GT 25-5	4 AWG	25 mm ²	5.3	14	34	13.5	9.5	7.1		100

We certify that the values provided are as accurate as possible. Use of these values, however, remains the sole responsibility of the customer and cannot in any way substitute for testing the product under real conditions of use. The user must assess whether this product is suitable for a particular use. KACAB shall not be held responsible for any loss or anomaly resulting from the correct or incorrect use of this product.



PRT NR.	WIRE RANGE AWG	WIRE RANGE (MM ²)	Ø E	W	L	B	D	D1	UL	PACKED
GT 25-6	4 AWG	25 mm ²	6.4	14	34	13.5	9.5	7.1		50
GT 25-8	4 AWG	25 mm ²	8.3	14	34	13.5	9.5	7.1		50
GT 25-10	4 AWG	25 mm ²	10.5	16	37	13.5	9.5	7.1		50
GT 25-12	4 AWG	25 mm ²	13.2	18	40	13.5	9.5	7.1		50
GT 25-14	4 AWG	25 mm ²	14.5	21	42	13.5	9.5	7.1		50
GT 35-6	2 AWG	35 mm ²	6.4	16.5	39	16	11	8.2		50
GT 35-8	2 AWG	35 mm ²	8.3	16.5	39	16	11	8.2		50
GT 35-10	2 AWG	35 mm ²	10.5	16.5	43	16	11	8.2		50
GT 35-12	2 AWG	35 mm ²	13.2	18	43	16	11	8.2		50
GT 35-14	2 AWG	35 mm ²	14.5	20	48	16	11	8.2		50
GT 35-16	2 AWG	35 mm ²	16.5	23	48	16	11	8.2		50
GT 40-6	1 AWG	40 mm ²	6.4	17	44	17	11.2	9		20
GT 40-8	1 AWG	40 mm ²	8.3	17	44	17	11.2	9		20
GT 40-10	1 AWG	40 mm ²	10.5	17	44	17	11.2	9		20
GT 40-12	1 AWG	40 mm ²	13.2	18	44	17	11.2	9		20
GT 50-6	1/0 AWG	50 mm ²	6.4	18	45	20	12.5	9.5		20
GT 50-8	1/0 AWG	50 mm ²	8.3	18	45	20	12.5	9.5		20
GT 50-10	1/0 AWG	50 mm ²	10.5	18	49	20	12.5	9.5		20
GT 50-12	1/0 AWG	50 mm ²	13.2	18	49	20	12.5	9.5		20
GT 50-14	1/0 AWG	50 mm ²	14.5	22	54	20	12.5	9.5		20
GT 50-16	1/0 AWG	50 mm ²	16.5	25	62	23	14	9.5		20
GT 50-20	1/0 AWG	50 mm ²	21	30	68	23	14	9.5		20
GT 70-8	2/0 AWG	70 mm ²	8.3	22	47.6	20	15	11.5		20
GT 70-10	2/0 AWG	70 mm ²	10.5	22	51.6	20	15	11.5		20
GT 70-12	2/0 AWG	70 mm ²	13.2	22	51.6	20	15	11.5		20
GT 70-14	2/0 AWG	70 mm ²	14.5	22	62.6	20	15	11.5		20
GT 70-16	2/0 AWG	70 mm ²	16.5	22	62.6	20	15	11.5		20
GT 70-20	2/0 AWG	70 mm ²	21	30	62.6	20	15	11.5		20
GT 95-8	3/0 AWG	95 mm ²	8.3	25	55.8	22	17	13.5		20
GT 95-10	3/0 AWG	95 mm ²	10.5	25	55.8	22	17	13.5		20
GT 95-12	3/0 AWG	95 mm ²	13.2	25	55.8	22	17	13.5		20
GT 95-14	3/0 AWG	95 mm ²	14.5	25	66.8	22	17	13.5		20
GT 95-16	3/0 AWG	95 mm ²	16.5	25	66.8	22	17	13.5		20
GT 95-20	3/0 AWG	95 mm ²	21	30	66.8	22	17	13.5		20
GT 120-8	4/0 AWG	120 mm ²	8.3	29	71.5	27	20	15.6		10
GT 120-10	4/0 AWG	120 mm ²	10.5	29	71.5	27	20	15.6		10
GT 120-12	4/0 AWG	120 mm ²	13.2	29	71.5	27	20	15.6		10
GT 120-14	4/0 AWG	120 mm ²	14.5	29	71.5	27	20	15.6		10
GT 120-16	4/0 AWG	120 mm ²	16.5	29	71.5	27	20	15.6		10
GT 120-20	4/0 AWG	120 mm ²	21	29	71.5	27	20	15.6		10

We certify that the values provided are as accurate as possible. Use of these values, however, remains the sole responsibility of the customer and cannot in any way substitute for testing the product under real conditions of use. The user must assess whether this product is suitable for a particular use. KACAB shall not be held responsible for any loss or anomaly resulting from the correct or incorrect use of this product.



PRT NR.	WIRE RANGE AWG	WIRE RANGE (MM ²)	Ø E	W	L	B	D	D1	UL	PACKED
GT 150-8	250/300 kcmil	150 mm ²	8.3	30.6	78	32	21	16.5		10
GT 150-10	250/300 kcmil	150 mm ²	10.5	30.6	78	32	21	16.5		10
GT 150-12	250/300 kcmil	150 mm ²	13.2	30.6	78	32	21	16.5		10
GT 150-14	250/300 kcmil	150 mm ²	14.5	30.6	78	32	21	16.5		10
GT 150-16	250/300 kcmil	150 mm ²	16.5	30.6	78	32	21	16.5		10
GT 150-20	250/300 kcmil	150 mm ²	21	30.6	78	32	21	16.5		10
GT 185-10	300/350 kcmil	185 mm ²	10.5	34	84	34	23.6	18.4		10
GT 185-12	300/350 kcmil	185 mm ²	13.2	34	84	34	23.6	18.4		10
GT 185-14	300/350 kcmil	185 mm ²	14.5	34	84	34	23.6	18.4		10
GT 185-16	300/350 kcmil	185 mm ²	16.5	34	84	34	23.6	18.4		10
GT 185-20	300/350 kcmil	185 mm ²	21	34	84	34	23.6	18.4		10
GT 240-10	400/450 kcmil	240 mm ²	10.5	38.5	90	37	26.4	21.2		5
GT 240-12	400/450 kcmil	240 mm ²	13.2	38.5	90	37	26.4	21.2		5
GT 240-14	400/450 kcmil	240 mm ²	14.5	38.5	90	37	26.4	21.2		5
GT 240-16	400/450 kcmil	240 mm ²	16.5	38.5	90	37	26.4	21.2		5
GT 240-18	400/450 kcmil	240 mm ²	19	38.5	90	37	26.4	21.2		5
GT 240-20	400/450 kcmil	240 mm ²	21	38.5	90	37	26.4	21.2		5
GT 300-10		300 mm ²	10.5	42	96	40	28.6	23.4		1
GT 300-12		300 mm ²	13.2	42	96	40	28.6	23.4		1
GT 300-14		300 mm ²	14.5	42	96	40	28.6	23.4		1
GT 300-16		300 mm ²	16.5	42	96	40	28.6	23.4		1
GT 300-20		300 mm ²	21	42	96	40	28.6	23.4		1
GT 400-10		400 mm ²	10.5	48	104.7	37	32.8	26.8		1
GT 400-12		400 mm ²	13.2	48	104.7	37	32.8	26.8		1
GT 400-14		400 mm ²	14.5	48	104.7	37	32.8	26.8		1
GT 400-16		400 mm ²	16.5	48	104.7	37	32.8	26.8		1
GT 400-18		400 mm ²	18.5	48	104.7	37	32.8	26.8		1
GT 400-20		400 mm ²	21	48	104.7	37	32.8	26.8		1
GT 500-10		500 mm ²	10.5	55	115.5	46.5	38.4	29.8		1
GT 500-12		500 mm ²	13.2	55	115.5	46.5	38.4	29.8		1
GT 500-14		500 mm ²	14.5	55	115.5	46.5	38.4	29.8		1
GT 500-16		500 mm ²	16.5	55	115.5	46.5	38.4	29.8		1
GT 500-18		500 mm ²	18.5	55	115.5	46.5	38.4	29.8		1
GT 500-20		500 mm ²	21	55	115.5	46.5	38.4	29.8		1
GT 630-10		630 mm ²	10.5	64	133.1	50	44.7	34.5		1
GT 630-12		630 mm ²	13.2	64	133.1	50	44.7	34.5		1
GT 630-14		630 mm ²	15.5	64	133.1	50	44.7	34.5		1
GT 630-16		630 mm ²	16.5	64	133.1	50	44.7	34.5		1
GT 630-18		630 mm ²	18.5	64	133.1	50	44.7	34.5		1
GT 630-20		630 mm ²	21	64	133.1	50	44.7	34.5		1

We certify that the values provided are as accurate as possible. Use of these values, however, remains the sole responsibility of the customer and cannot in any way substitute for testing the product under real conditions of use. The user must assess whether this product is suitable for a particular use. KACAB shall not be held responsible for any loss or anomaly resulting from the correct or incorrect use of this product.