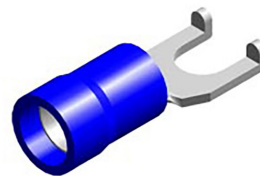


TERMINALS

PVC INSULATED FLANGE TERMINALS STRAIGHT COPPER SLEEVE

Maximum electrical rating : 600 Volts.
Maximum temperature : 75 °C
Material : Copper
Plating : Electro tin plated
Insulation : PVC

RoHS compliant



PRT NR.	WIRE RANGE (MM ²)	COLOR	D2	B	F	L	E	D	D1	W	UL	PACKED
BFVD 2-4B	1.5~2.5	blue	4.3	7.2	6.5	21.2	10	5.1	2.3	1.5		10 x 100
BFVD 2-5B	1.5~2.5	blue	5.3	8.5	7.3	22	10	5.1	2.3	1.5		10 x 100

We certify that the values provided are as accurate as possible. Use of these values, however, remains the sole responsibility of the customer and cannot in any way substitute for testing the product under real conditions of use. The user must assess whether this product is suitable for a particular use. KACAB shall not be held responsible for any loss or anomaly resulting from the correct or incorrect use of this product.