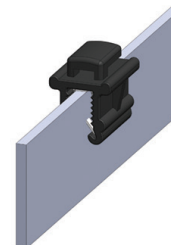


EDGE CLIPS

Edge clips are an excellent solution for attachment of cables, wires and tubes on a plastic or metal profile. To choose the right type of edge clip, you should take into account the profile thickness and the way in which the cable will be mounted. KACAB offers edge clips for different applications: with the cable tie fastening on top or on the side of the clip and by which the cable tie can be attached right-angled on or in longitudinal direction of the profile.



Material specifications:

Clip:	Polyamide 6.6 HS, black, impact resistant, heat resistant, UV resistant
Cable tie:	Polyamide 6.6 HS, black, impact resistant, heat resistant, UV resistant
Temperature range:	-40 °C to +120 °C (short time 140 °C)
Metal clamp:	Spring steel, hardened surface
	The surface replies to the highest requirements for corrosion protection

Types of edge clips for profile thickness 0,7 - 3,0 mm

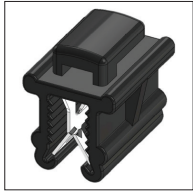
Typenr.	Profile thickness in mm	Mounting of cable
KC1*	0,7 - 3,0	<ul style="list-style-type: none"> • Cable tie fastening on top of the clip • Cable tie right-angled on the profile
KC2*	0,7 - 3,0	<ul style="list-style-type: none"> • Cable tie fastening on the side of the clip • Cable tie right-angled on the profile
KC3*	0,7 - 3,0	<ul style="list-style-type: none"> • Cable tie fastening on top of the clip • Cable tie in longitudinal direction of the profile
KC5*	0,7 - 3,0	<ul style="list-style-type: none"> • Cable tie fastening on the side of the clip • Cable tie in longitudinal direction of the profile
KC15*	0,7 - 3,0	<ul style="list-style-type: none"> • Cable tie fastening on top and on the side of the clip • Cable tie can be mounted in 4 ways
KC17-16036-CVUV**	0,7 - 3,0	<ul style="list-style-type: none"> • Cable tie fastening on top of the clip • Cable tie right-angled on the profile
KC18-16036-CVUV**	0,7 - 3,0	<ul style="list-style-type: none"> • Cable tie fastening on the side of the clip • Cable tie right-angled on the profile
KC19-16036-CVUV**	0,7 - 3,0	<ul style="list-style-type: none"> • Cable tie fastening on top of the clip • Cable tie in longitudinal direction of the profile
KC20-16036-CVUV**	0,7 - 3,0	<ul style="list-style-type: none"> • Cable tie fastening on the side of the clip • Cable tie in longitudinal direction of the profile
KC11	0,7 - 3,0	<ul style="list-style-type: none"> • With plug attachment
KC13	0,7 - 3,0	<ul style="list-style-type: none"> • With plug attachment

* Also available with cable tie: 200 x 4,8 mm (PA 6.6 / black)

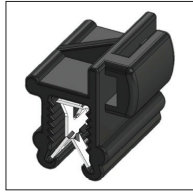
** Delivered with cable tie: 160 x 3,6 mm (PA 6.6 / black)



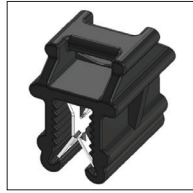
We certify that the values provided are as accurate as possible. Use of these values, however, remains the sole responsibility of the customer and cannot in any way substitute for testing the product under real conditions of use. The user must assess whether this product is suitable for a particular use. KACAB shall not be held responsible for any loss or anomaly resulting from the correct or incorrect use of this product.



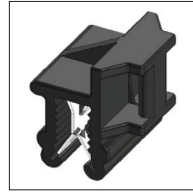
KC1



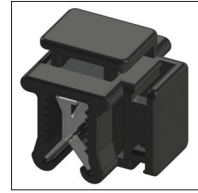
KC2



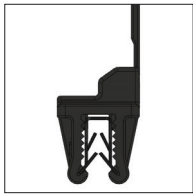
KC3



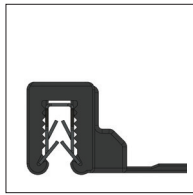
KC5



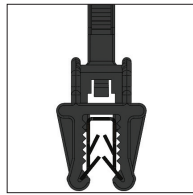
KC15



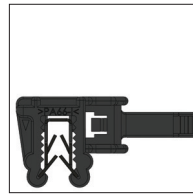
KC17-16036-CVUV



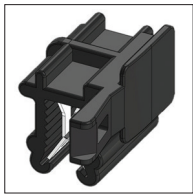
KC18-16036-CVUV



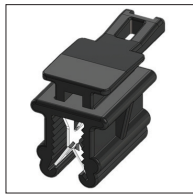
KC19-16036-CVUV



KC20-16036-CVUV



KC11



KC13

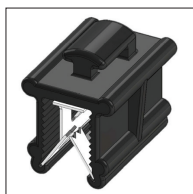
Types of edge clips for profile thickness 0,7 - 3,0 mm

Typenr.	Profile thickness in mm	Mounting of cable
KC4*	3,0 - 6,0	<ul style="list-style-type: none"> • Cable tie fastening on top of the clip • Cable tie right-angled on the profile
KC6*	3,0 - 6,0	<ul style="list-style-type: none"> • Cable tie fastening on the side of the clip • Cable tie right-angled on the profile
KC7*	3,0 - 6,0	<ul style="list-style-type: none"> • Cable tie fastening on top of the clip • Cable tie in longitudinal direction of the profile
KC8*	3,0 - 6,0	<ul style="list-style-type: none"> • Cable tie fastening on the side of the clip • Cable tie in longitudinal direction of the profile

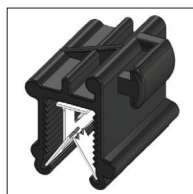
* Also available with cable tie: 200 x 4,8 mm (PA 6.6 / black)



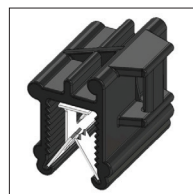
KC4



KC6



KC7



KC8

We certify that the values provided are as accurate as possible. Use of these values, however, remains the sole responsibility of the customer and cannot in any way substitute for testing the product under real conditions of use. The user must assess whether this product is suitable for a particular use. KACAB shall not be held responsible for any loss or anomaly resulting from the correct or incorrect use of this product.