



MOULDED PARTS / AEC

Cable End Caps



AEC

Moulded parts / cable end caps with spiral adhesive coating

Features:

- AEC = standard end cap • AEC-L = standard end cap, extended length
- Crosslinked Polyolefin • Excellent sealing properties • Ideal for low voltage applications
- UV and weather resistant

Approvals:

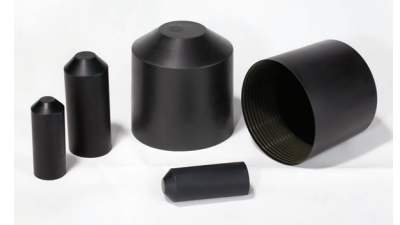
- Meets: RoHS

Application:

- Operating temperature: -55 °C to +110 °C • Minimum full recovery temperature: +120 °C
- Longitudinal change: 0 ± 10% max.

Order information:

- Color: black



Resistant to oxydation, ozone, UV radiation. Protects power cables up to 1000 V and telecommunication cables. Very easy to fit over cable end. Environment definitive watertight seal.

Type / Size	As supplied: inside diameter in mm (min.)	After recovery: inside diameter in mm (max.)	After recovery: wall thickness in mm (min.)	After recovery: length in mm
AEC 12/4	12,0	4,0	2,6	40,0
AEC 14/5	14,0	5,0	2,2	45,0
AEC 20/6	20,0	6,0	2,8	55,0
AEC 25/8,5	25,0	8,5	2,8	68,0
AEC 35/16	35,0	16,0	3,3	90,0
AEC 40/16	40,0	16,0	3,3	83,0
AEC 55/26	55,0	26,0	3,5	103,0
AEC 75/36	75,0	36,0	4,0	120,0
AEC 100/52	100,0	52,0	4,0	140,0
AEC 120/60	120,0	60,0	4,0	150,0
AEC 145/60	145,0	60,0	4,0	150,0
AEC 160/80	160,0	80,0	4,0	150,0
AEC-L 14/4	14,0	4,0	2,2	60,0
AEC-L 40/15	40,0	15,0	3,3	90,0
AEC-L 55/23	55,0	23,0	3,8	140,0
AEC-L 62/23	62,0	23,0	3,8	140,0
AEC-L 75/36	75,0	36,0	4,0	150,0
AEC-L 75/36	75,0	36,0	4,2	170,0
AEC-L 100/47	100,0	47,0	4,0	155,0

We certify that the values provided are as accurate as possible. Use of these values, however, remains the sole responsibility of the customer and cannot in any way substitute for testing the product under real conditions of use. The user must assess whether this product is suitable for a particular use. KACAB shall not be held responsible for any loss or anomaly resulting from the correct or incorrect use of this product.