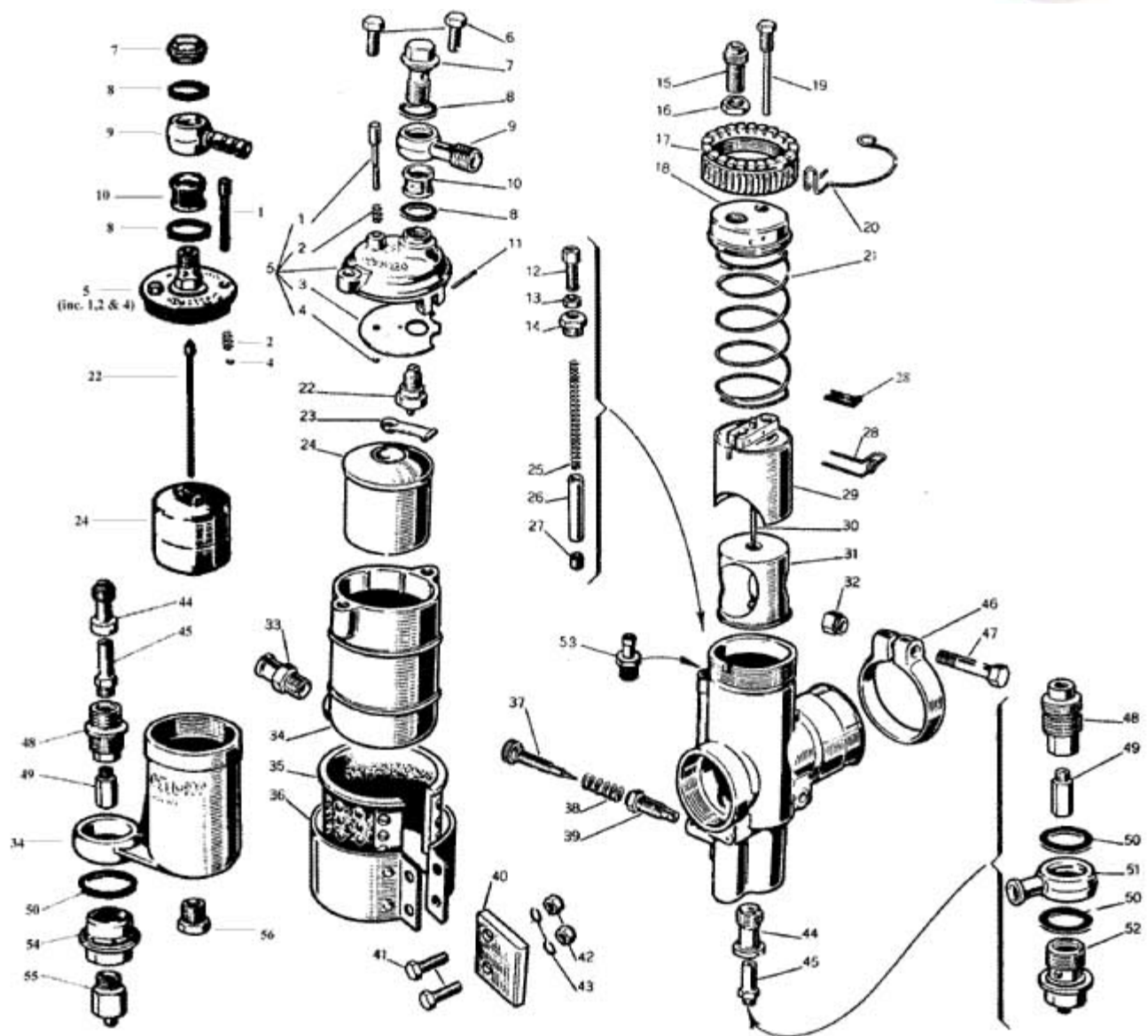


Dellorto Motorcycle Carburetor Parts Guide



SS1 PARTS LIST & DIAGRAM



Diag No.	Part No.	Description	Sizes available
1	1857	Float tickler	32-35
1	6534	Float tickler	25-30
2	1288	Tickler spring	25-30 & 32-35
3	1902	Anti surge plate	32-35
4	1493	Tickler circlip	25-30 & 32-35
5	2478	Chamber top assy	32-35

Diag No.	Part No.	Description	Sizes available
28	1407	Needle clip	25-30
29	3466	Slide	32-35
29	3686	Slide	32-35, Sizes 140,150,240 & 260
29	2384	Slide	25-30
30	1141	Needle, N	32-35, 1141.N1
30	1900	Needle, P	32-35

Dellorto Motorcycle Carburetor Tuning Guide

5	2053	Chamber top assy	25-30	30	1824	Needle, M	25-30
6	1861	Bolt	32-35	31	5231	Diffuser	32-35
7	1955	Banjo bolt	32-35	31	5213	Diffuser	32-35
7	1494	Banjo bolt	25-30	31	2412	Diffuser	25-30
8	1416	Banjo seal	25-30 & 32-35	32	1751	Clamp nut	32-35
9	1991	Fuel banjo	32-35	33	1852	Fuel outlet	32-35
9	1564	Fuel banjo	25-30	34	1775	Float bowl	32-35
10	1419	Fuel filter	25-30 & 32-35	34	1737	Float bowl	25-30
11	1903	Pivot pin	32-35	35	1864	Float bowl support	32-35
12	1104	Cable adjuster	25-30 & 32-35	36	1872	Float bowl clamp	32-35
13	1691	Locknut	25-30 & 32-35	37	1753	Mixture screw	32.-35
14	1127	Choke support	25-30 & 32-35	37	1101	Mixture screw	25-30
15	1122	Cable adjuster	25-30 & 32-35	38	1116	Mixture screw spring	25-30 & 32-35
16	1123	Locknut	25-30 & 32-35	39	1752	mixture screw holder	32-35
17	3469	Top ring	32-35	40	1934	Support plate	32-35
17	3498	Top ring	32-35	41	1862	Clamp bolt	32-35
17	6784	Top ring	25-30	42	4698	Clamp nut	32-35
18	3468	Carb. Top	32-35	43	1948	Spring washer	32-35
18	3497	Carb. Top	32-35	44	1128	Atomizer holder	32-35
18	6783	Carb. Top	25-30	44	1795	Atomizer holder	25-35
19	3504	Slide stop screw	32-35	45	1121	Atomizer	32-35, Sizes 320 to 400, please ask
19	2388	Slide stop screw	25-30	46	1805	Atomizer	25-30, Sizes 260,268 & 272.
19a	1576	Locknut	for 2388, Not shown	46	1748	Manifold clamp	32-35
20	3592	Locking clip	32-35	46	1749	Manifold clamp	32-35
20	1740	Locking clip	25-30	46	1796	Manifold clamp	25-30
21	3465	Slide spring	32-35	47	1750	Clamp bolt	32-35
21	3500	Slide spring	32-35	47	4269	clamp bolt	25-30
21	6785	Slide spring	25-30	48	1125	Main jet holder	32-35
22	1949	Needle valve	32-35, Size 400	48	2386	Main jet holder	25-30
22	1205	Needle valve	25-30	49	1126	main jet	25/35,Sizes 120 to 350, please ask
23	1901	Actuator arm	32-35	50	1972	Banjo seal	32-35
24	1893	Float	32-35	50	1161	Banjo seal	25-30
24	1156	Float	25-30	51	1853	Fuel banjo	32-35
25	1093	Choke spring	32-35	52	1953	Banjo bolt	32-35
25	1745	Choke spring	25-30	53	5654	Choke plug	32-35
26	1120	Choke piston	25-30 & 32-35	54	2387	Bottom nut	25-30
27	1747	Cable nipple	25-30 & 32-35	55	1801	Bottom nut	25-30
28	1742	Needle clip	32-35	56	1193	Nut	25-30