

Promix^{FDL} 35/40



Single lever cartridge with ceramic discs

In many faucets, the water temperature and the volume are regulated by single lever mixing cartridges with a diameter of 35 and 40 mm.

The ease of operation of the faucet depends on the ease of movement of the cartridge. In order to achieve this over a long period of time, it is necessary to use high-quality ceramic discs and the appropriate components.

The Promix offers a high level of comfort in use thanks to the high flow rate and Promix's easy-to-set operating angle, which ensures to easily get the water temperature which is desired.

The articles are available as Promix^{FDL} 35 and 40.

Water saving with a two step system

Based on a click made of ceramic and special metal water consumption can be minimized.

Water saving with an adjustable flow reducer

By turning the incorporated stainless steel screw in the spindle the maximum flow of the Promix will be limited.

Hot water limitation

A temperature limit ring can reduce the opening of the hot water inlet.

Noise reducing element

The Promix achieves a significant reduction in noise thanks to the high precision laminar sieve.

Promix in detail

The careful German workmanship and the high standards of quality which our company sets ensure that this article provides the function required. Each cartridge is 100% tested for leakage on fully-automatic inspection units.

The exclusive combination of brown and white special ceramic material with a self-lubricating effect supports the ease of operation. In addition, the ceramic discs have a smaller sealing surface, so there is even less friction.

Promix KU

In contrast to the acetal material which is frequently used for the housing, the PBT plastic found in this product serie offers a high degree of stability and temperature-resistance. By this the deformation of the housing is limited and the operation of the cartridge is as required.

Promix Brass

The Flühs Promix Brass Housing does not deform at all. This maintains the forces which are applied during installation as well as the sealing forces between the brass housing and the seat of the tap. As a result the operating torque of the lever is much more comfortable to handle compared to common plastic cartridges. In addition, the brass housing is less affected by a higher degree of pressure and/or temperature conditions in the plumbing system.

Promix Cold Start

In most cartridges, the middle position of the lever opens up the hot water inlet. The energy saving Promix Cold Start function avoids this often unnecessary use of hot water and energy, as its middle position of the lever opens up only the cold water inlet. If hot water is required, the lever just needs to be turned slightly to the left. This reduces the quantity of warm water of up to 50 % of the daily use which contributes considerably to higher efficiency of energy.

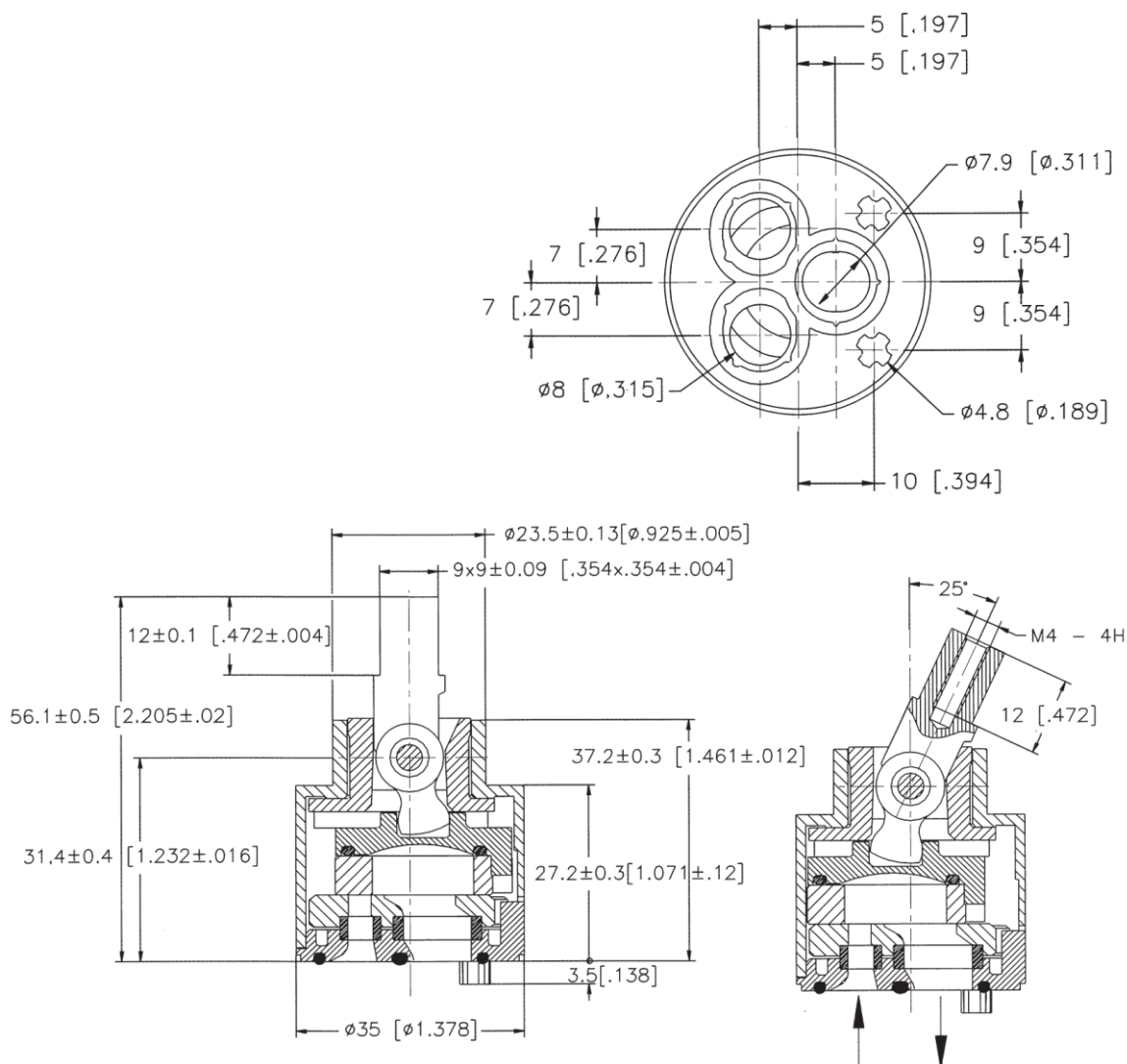


Promix 35 KU



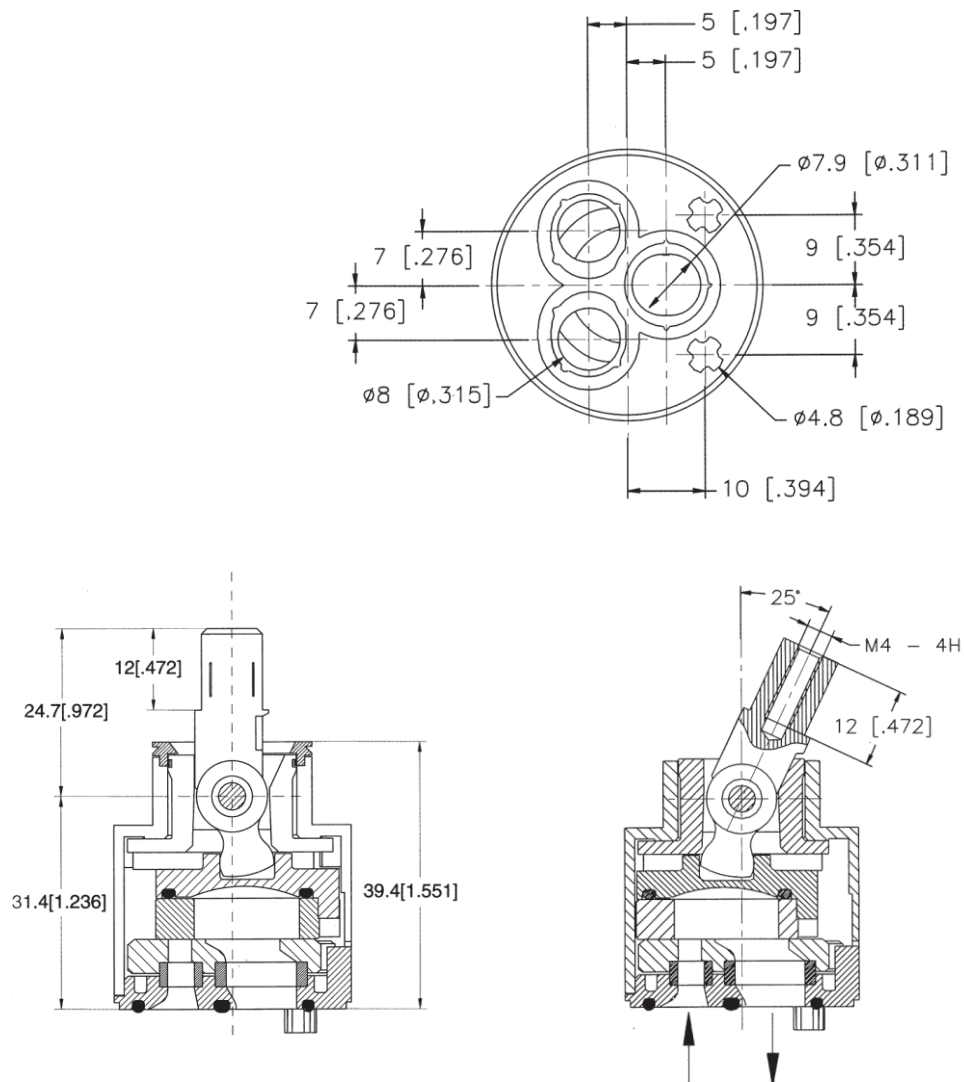
Promix 35 Brass

Technical data sheet



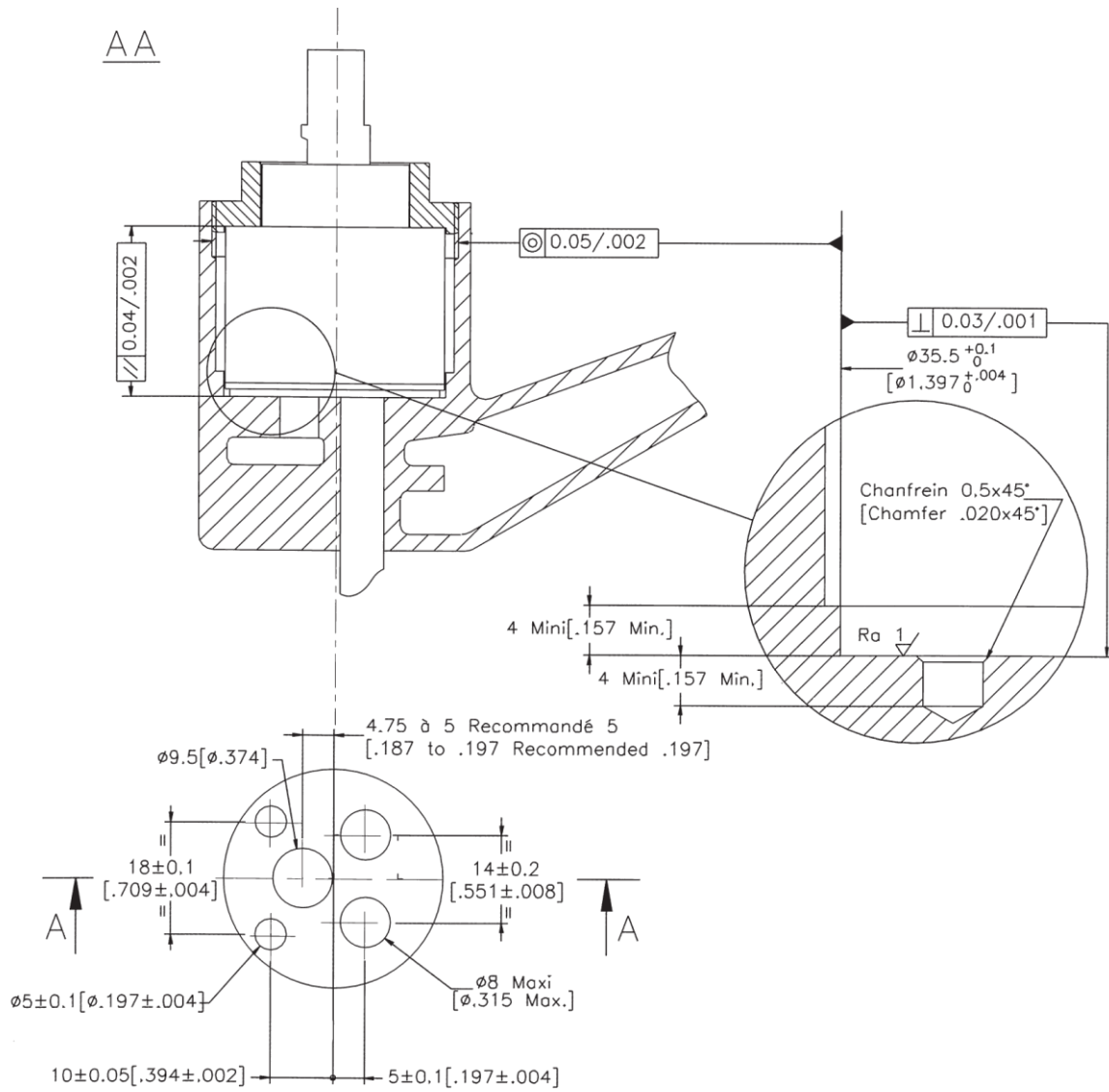
Item no.	Description
BF#17127	Promix 35 F, KU – Flat, Plastic Housing
BF#17227	Promix 35 F Brass, MS – Flat, Brass Housing
BF#17100	Promix 35 FG, KU – Flat, Noise Reducer, Plastic Housing
BF#17200	Promix 35 FG Brass, MS – Flat, Noise Reducer, Brass Housing
BF#17125	Promix 35 FG, CS, KU – Flat, Noise Reducer, Cold Start, Plastic Housing

Technical data sheet

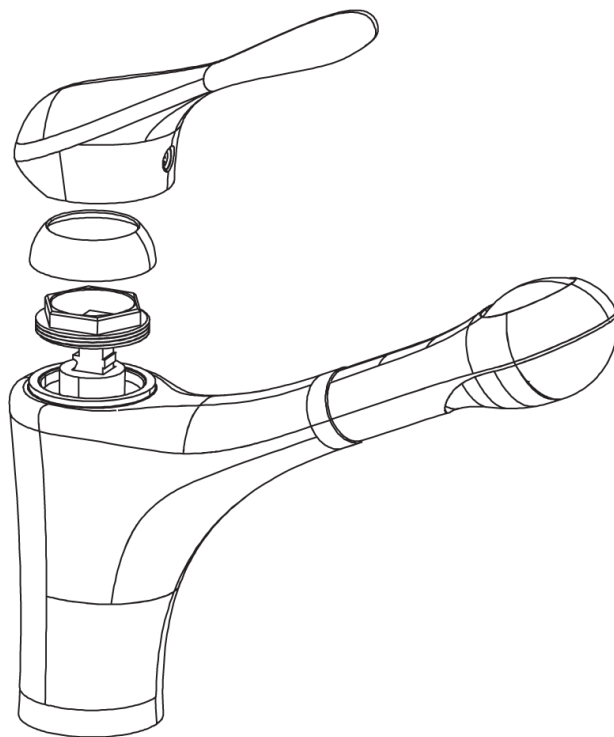
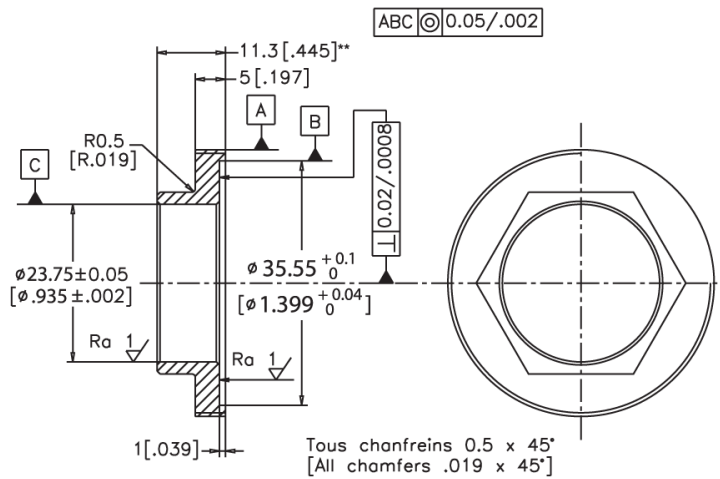


Item no.	Description
BF#17135	Promix 35 FGCT, KU – Flat, Noise Reducer, Click, Temperature Limiter, Plastic Housing
BF#17110	Promix 35 FGTD, KU – Flat, Noise Reducer, Temperature and Flow Limiter, Plastic Housing

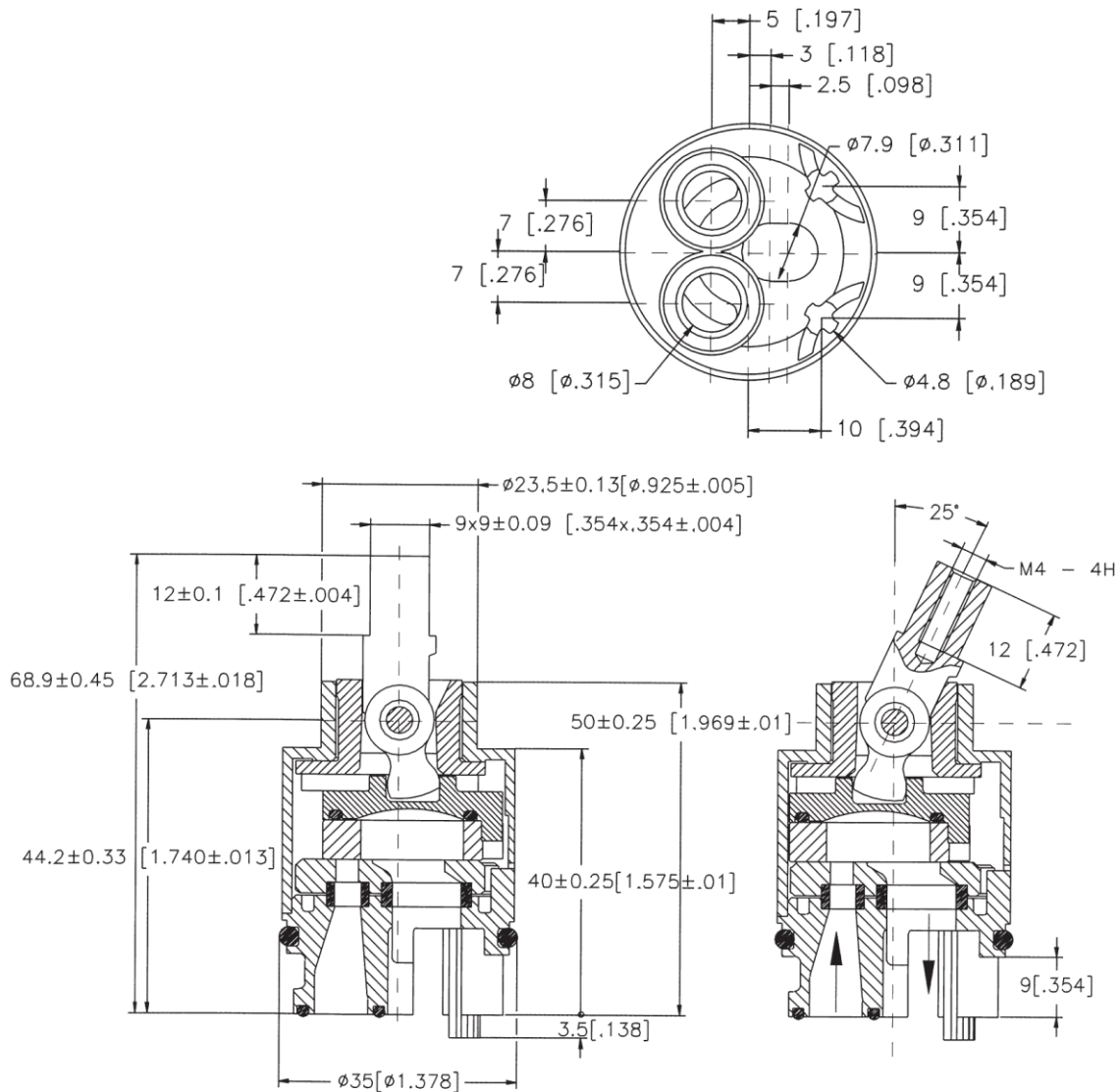
Seat recommendation



Assembly

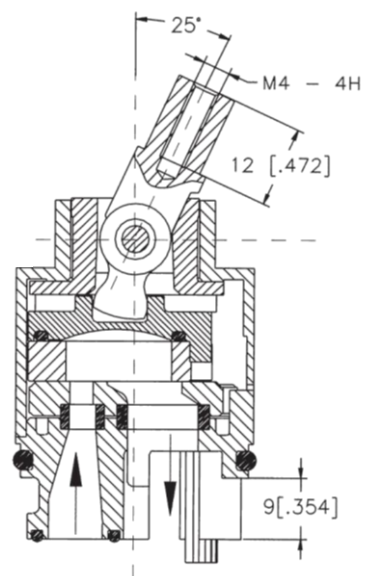
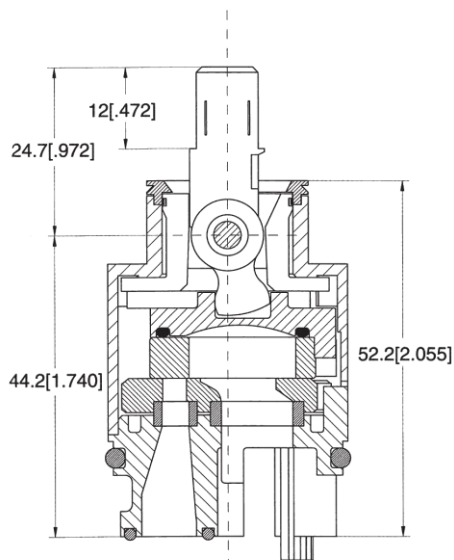
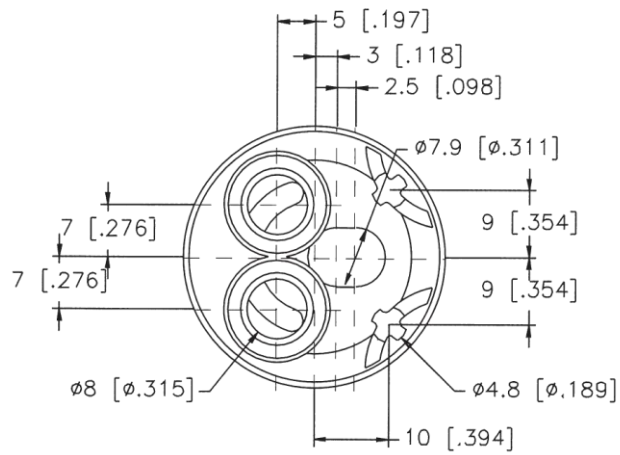


Technical data sheet



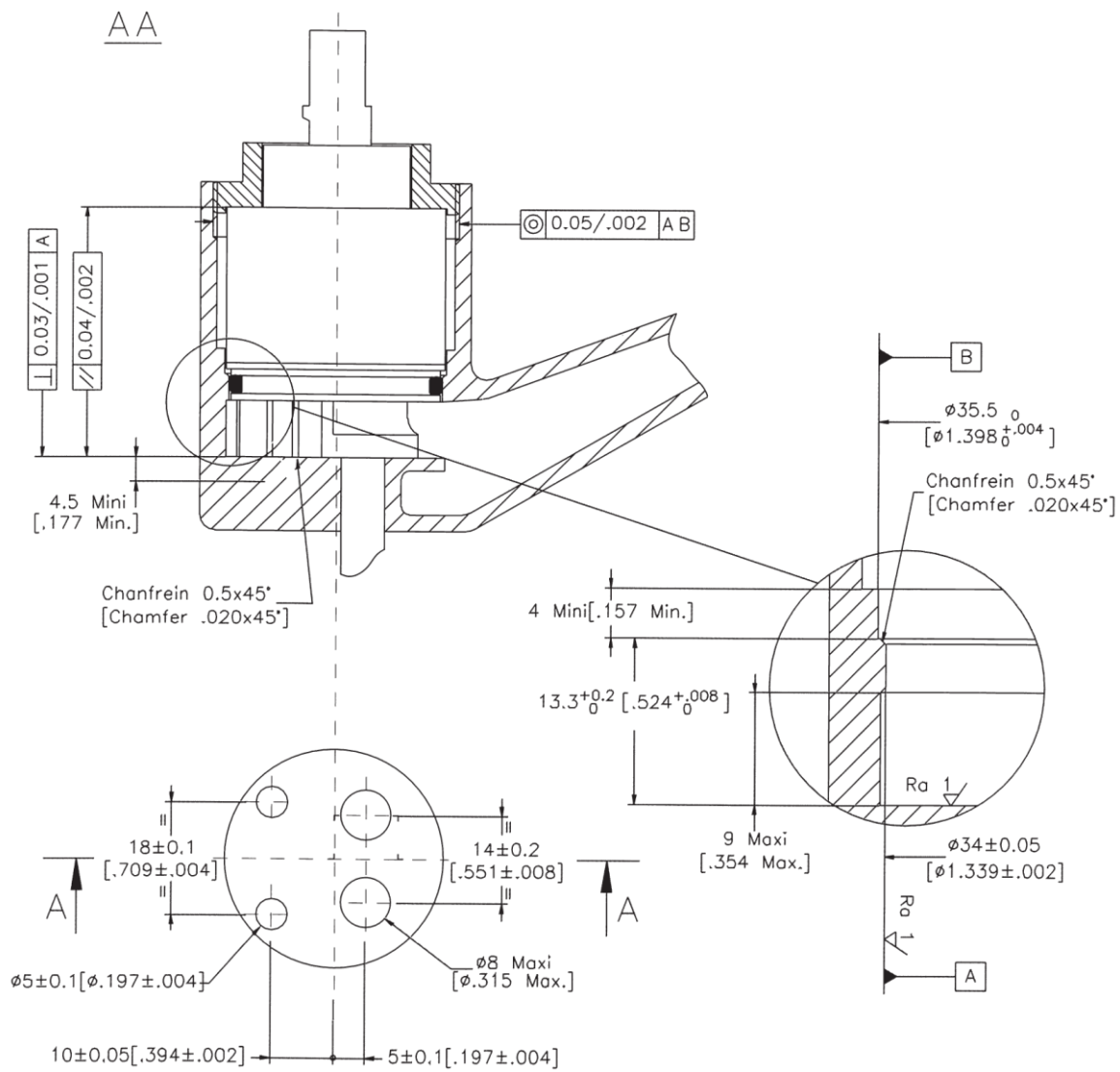
Item no.	Description
BF#17128	Promix 35 O, KU – Open, Plastic Housing
BF#17228	Promix 35 O Brass, MS – Open, Brass Housing
BF#17104	Promix 35 OG, KU – Open, Noise Reducer, Plastic Housing
BF#17204	Promix 35 OG Brass, MS – Open, Noise Reducer, Brass Housing
BF#17126	Promix 35 OG, CS, KU – Open, Noise Reducer, Cold Start, Plastic Housing

Technical data sheet

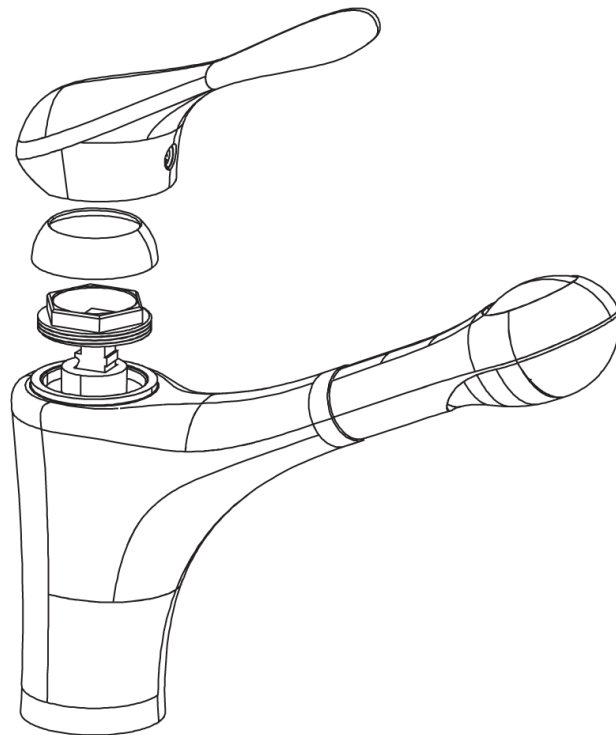
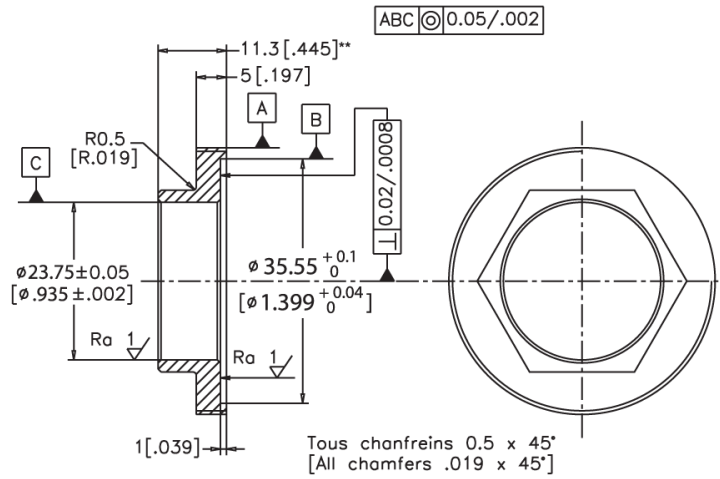


Item no.	Description

Seat recommendation

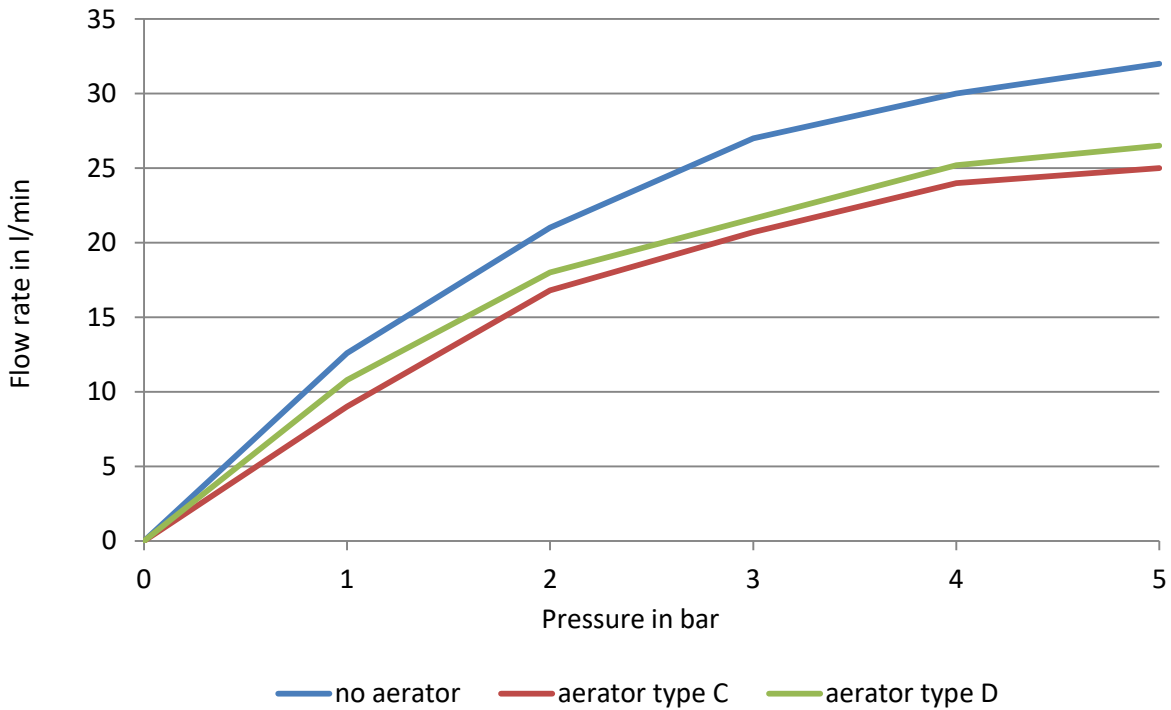


Assembly

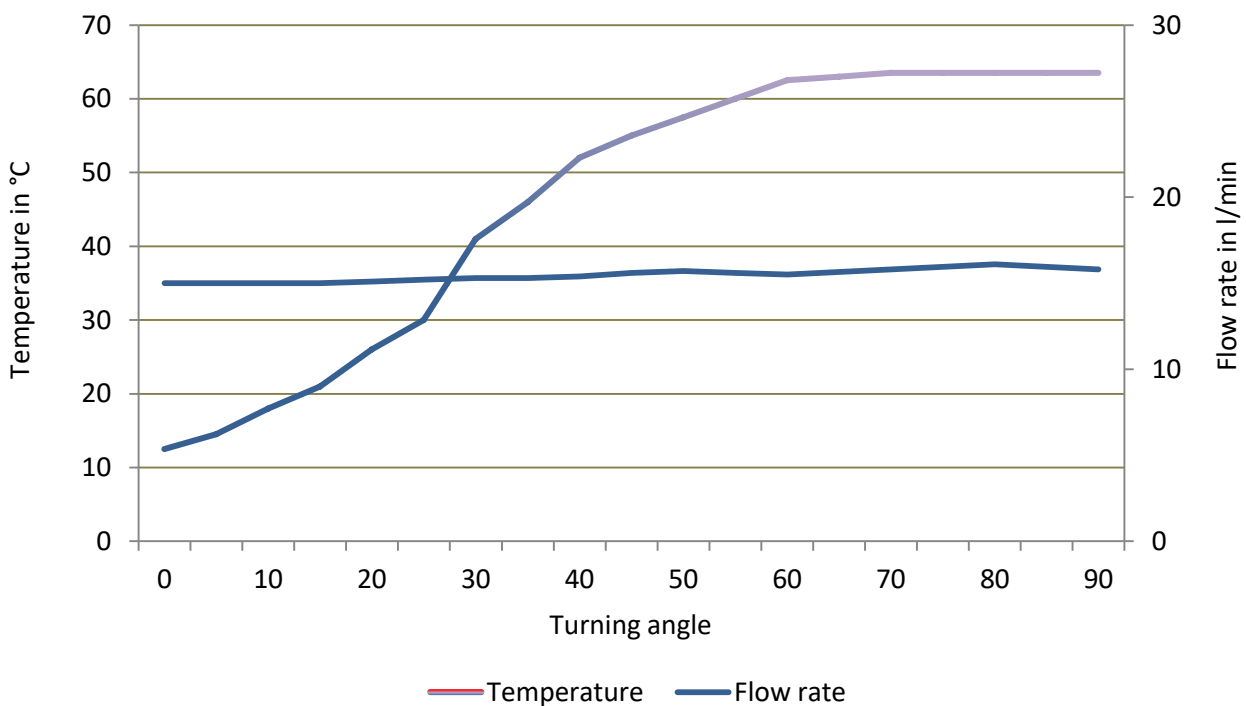


Flow rate

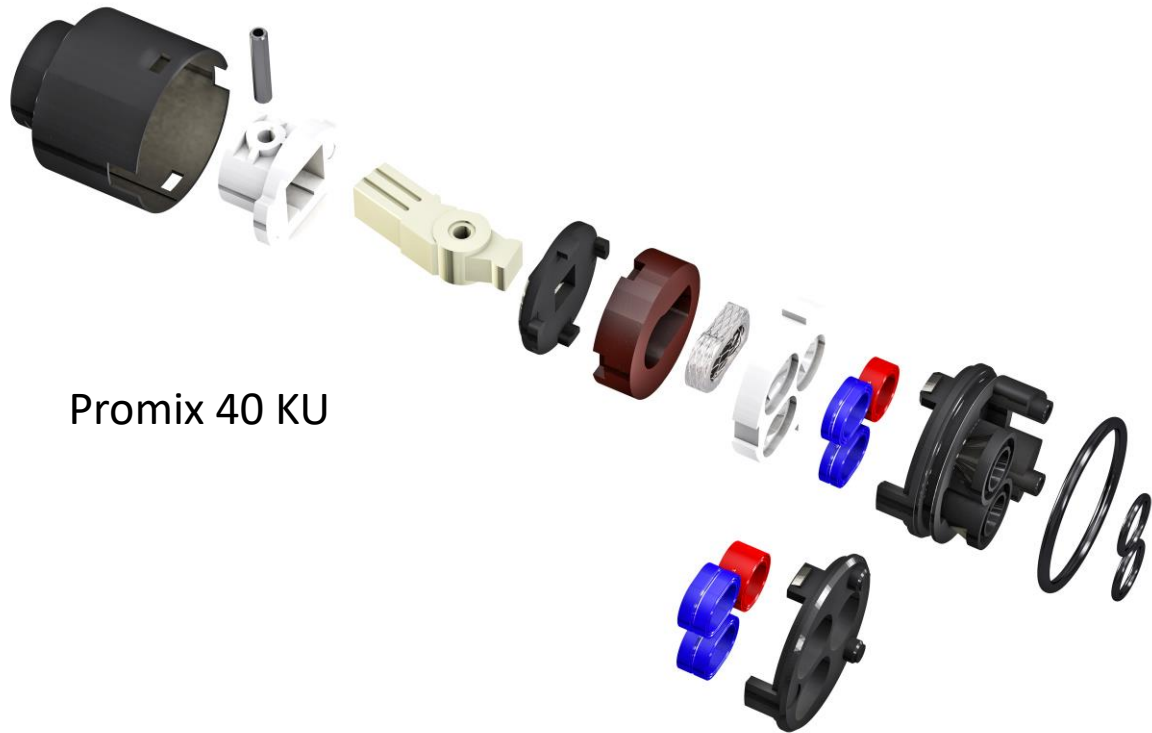
Flow rate at different water pressure for normal rotation Promix cartridges



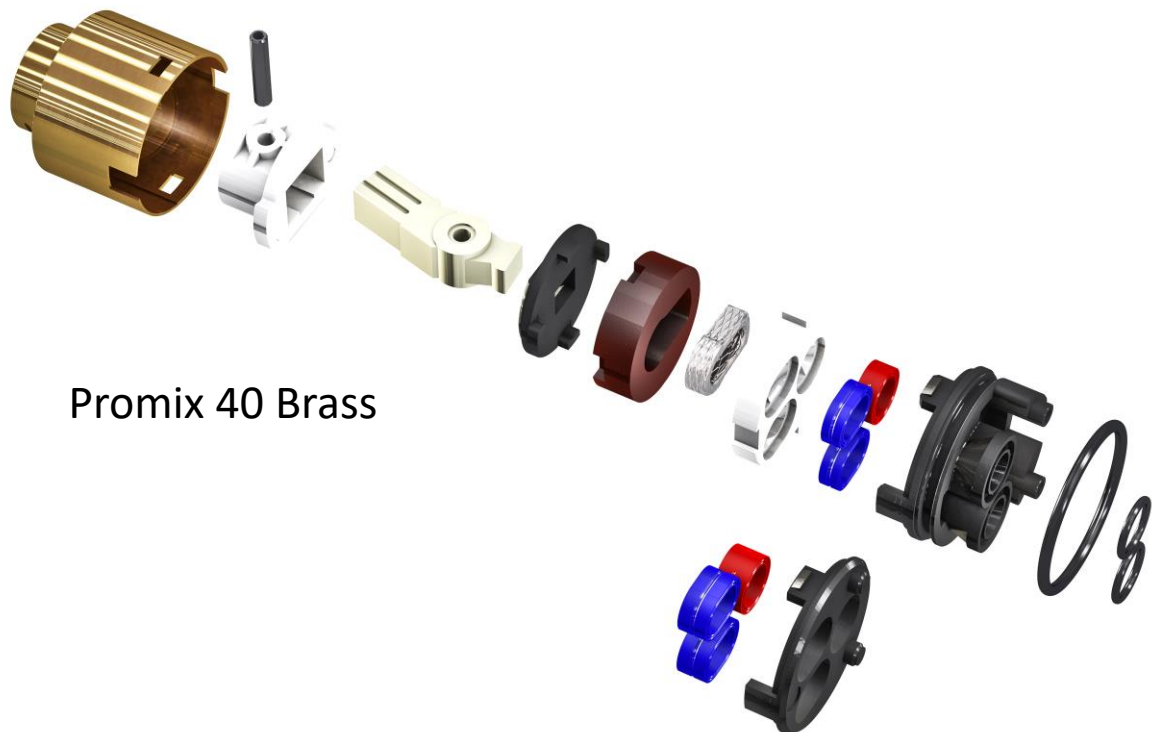
Temperature and flow rate for Promix Cold Start*



* fully open position at 3 bar water pressure, cold water temperature 12,5 °C, hot water temperature 63,5 °C

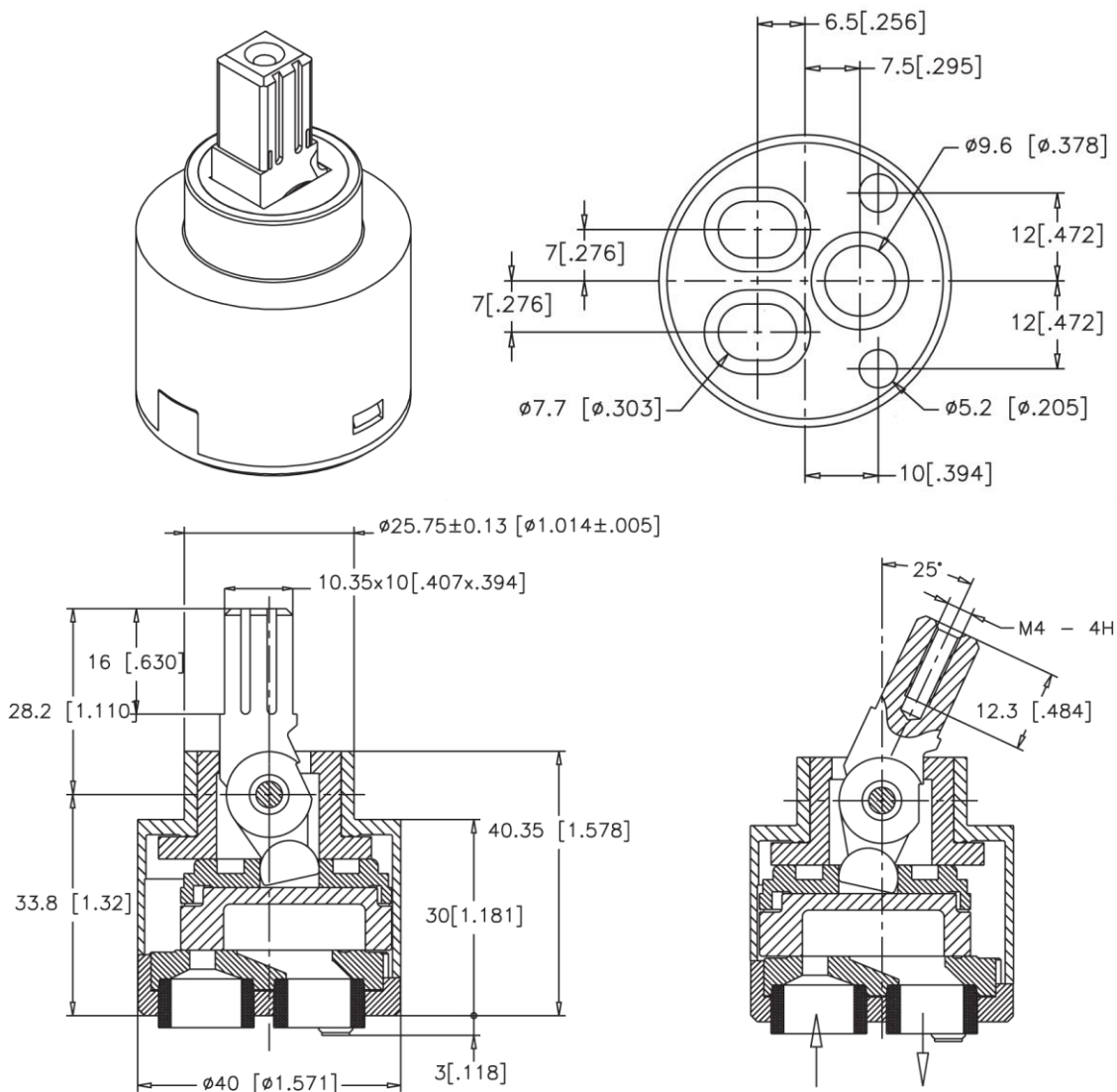


Promix 40 KU



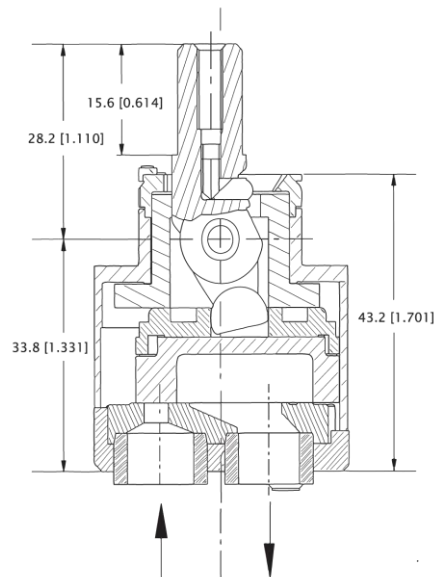
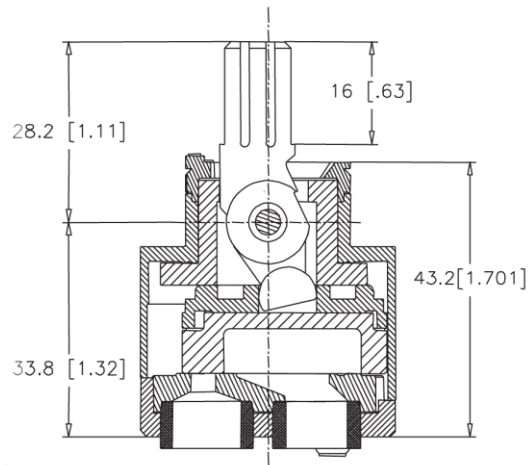
Promix 40 Brass

Technical data sheet



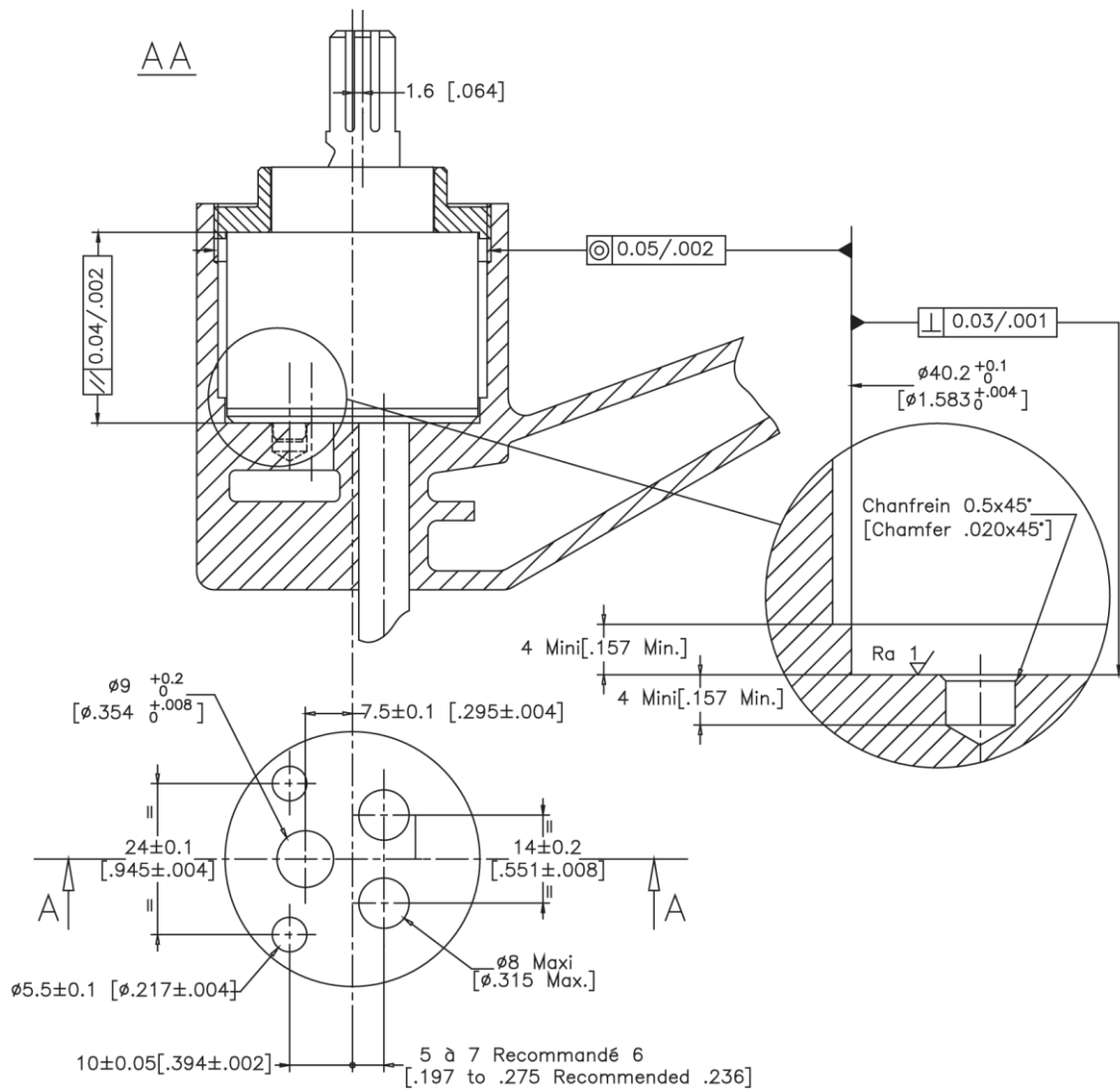
Item no.	Description
BF#17129	Promix 40 F, KU – Flat, Plastic Housing
BF#17229	Promix 40 F Brass, MS – Flat, Brass Housing
BF#17101	Promix 40 FG, KU – Flat, Noise Reducer, Plastic Housing
BF#17201	Promix 40 FG Brass, MS – Flat, Noise Reducer, Brass Housing

Technical data sheet

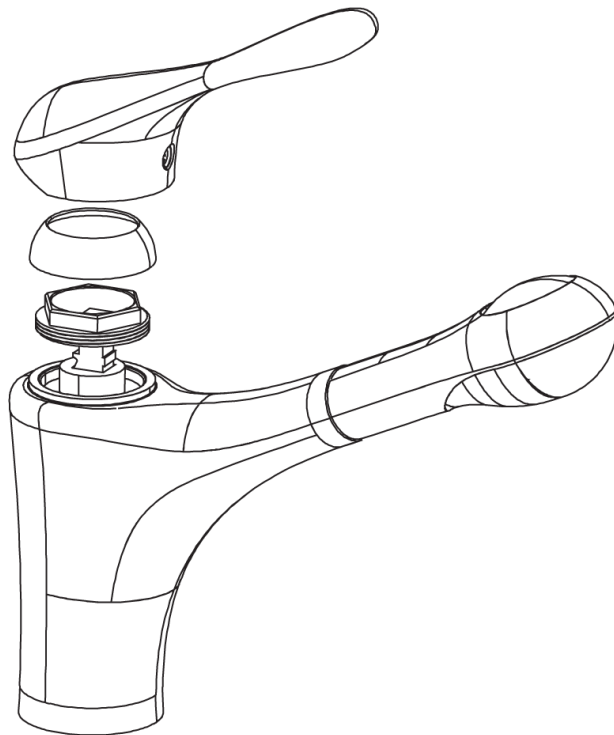
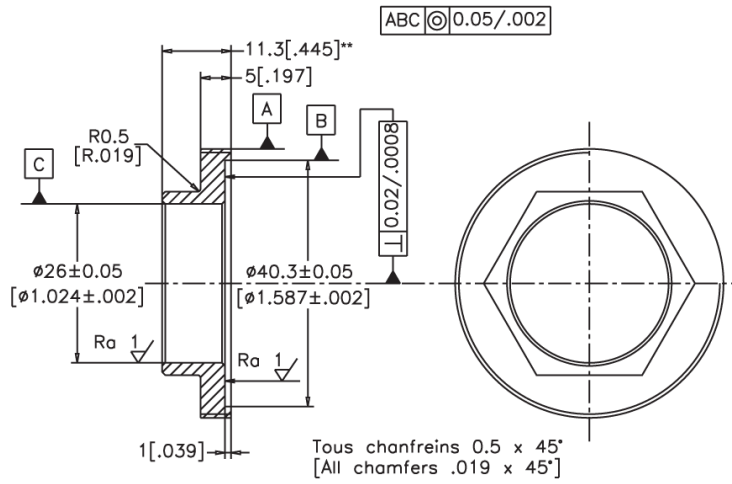


Item no.	Description

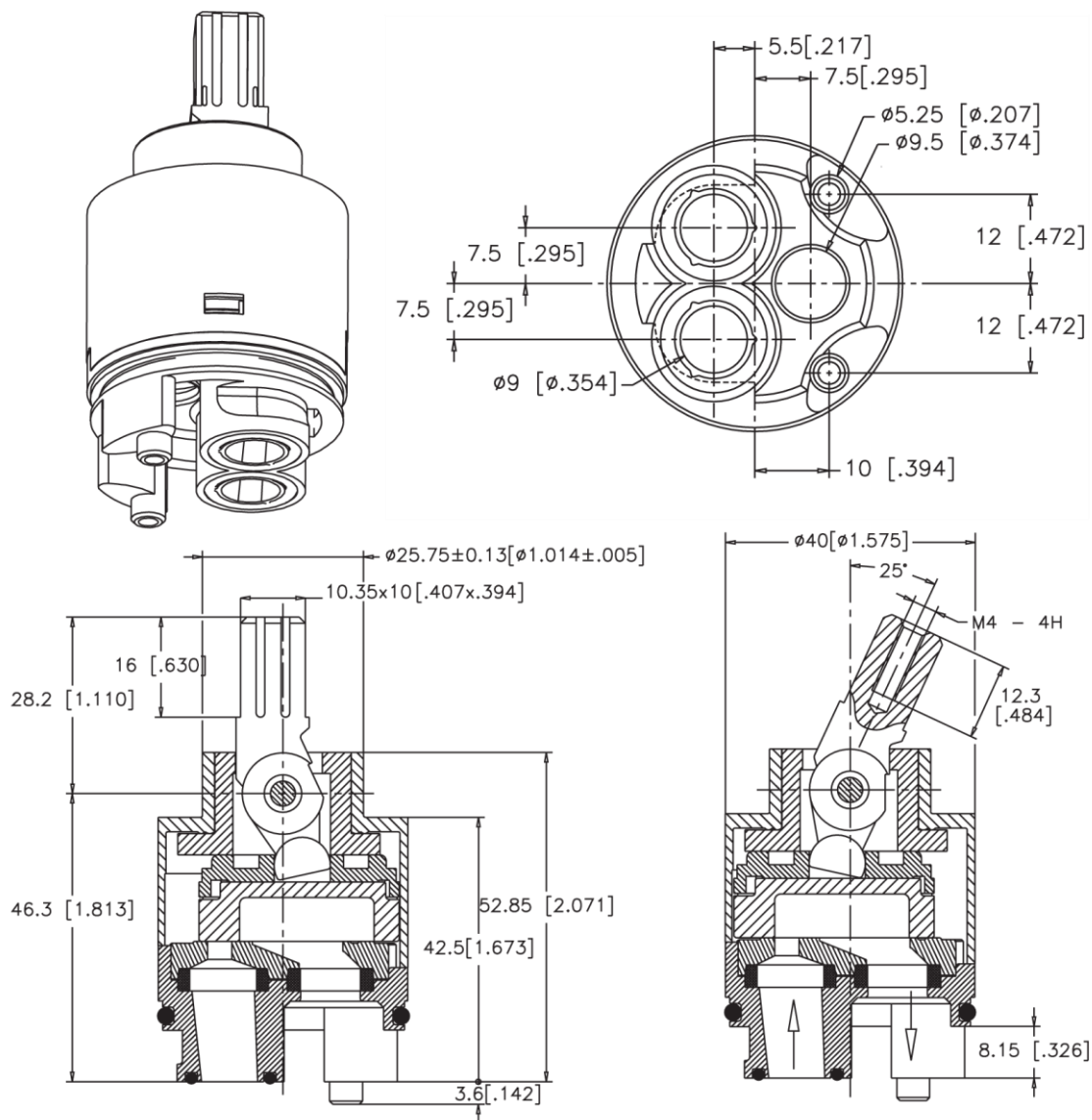
Seat recommendation



Assembly

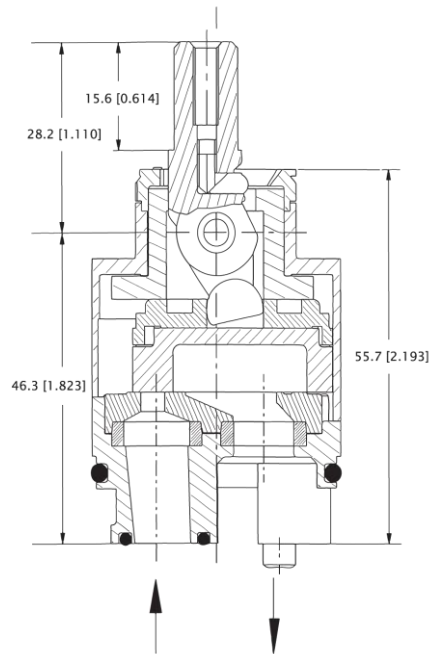
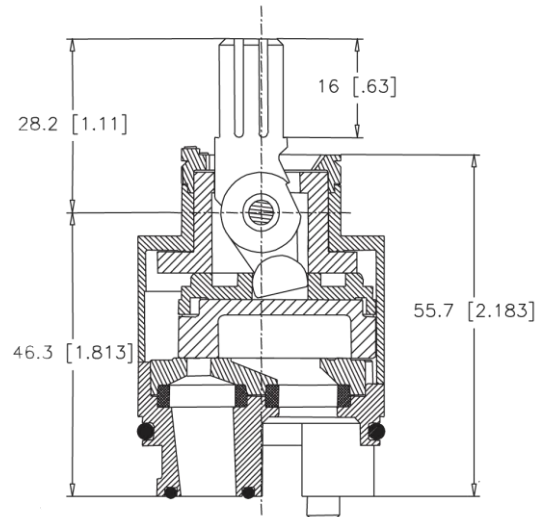


Technical data sheet



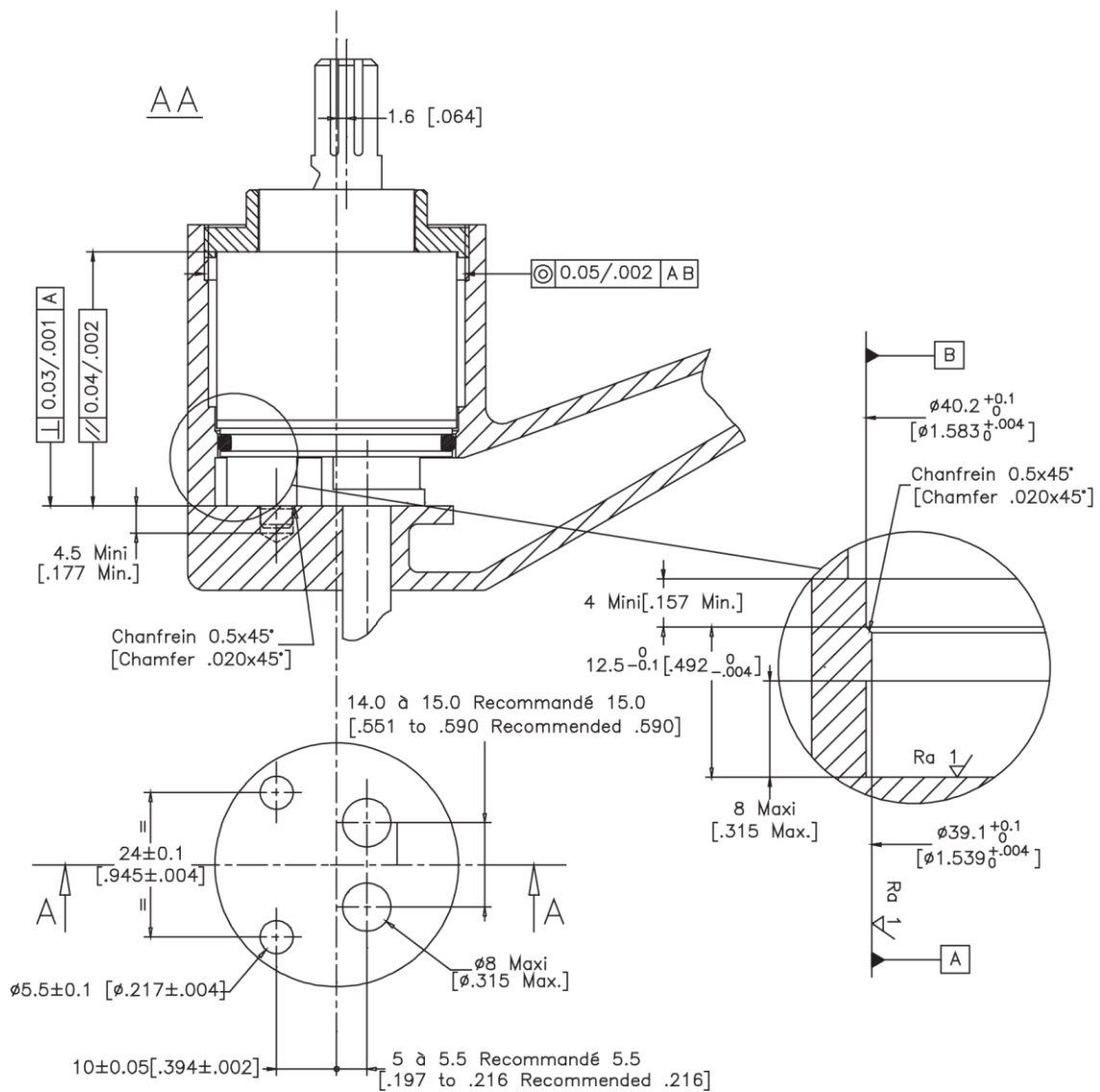
Item no.	Description
BF#17130	Promix 40 O, KU – Open, Plastic Housing
BF#17230	Promix 40 O Brass, MS – Open, Brass Housing
BF#17102	Promix 40 OG, KU – Open, Noise Reducer, Plastic Housing
BF#17202	Promix 40 OG Brass, MS – Open, Noise Reducer, Brass Housing

Technical data sheet

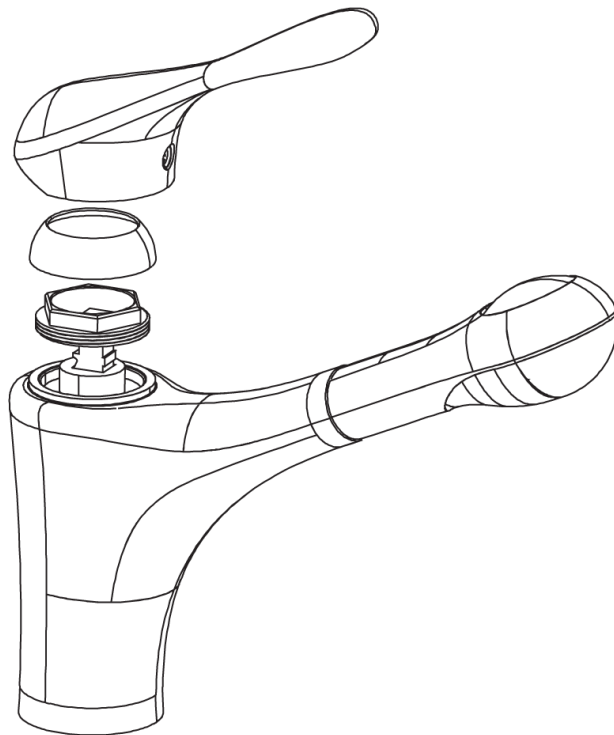
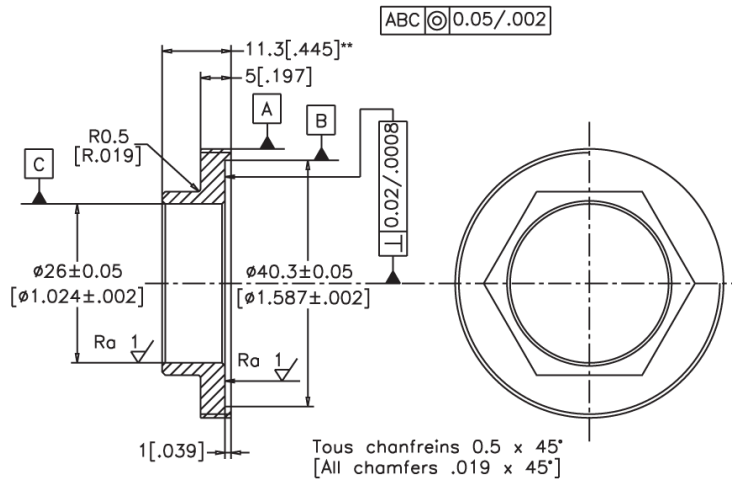


Item no.	Description

Seat recommendation



Assembly



Flow rate

