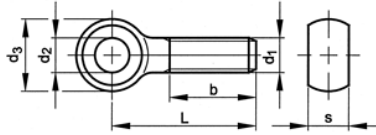


**DIN 444B KNEVELSCHROEVEN – ROESTVASTSTAAL A2**

DIN 444B EYE BOLTS – STAINLESS STEEL A2

DIN 444B CORPS DE BOULON A OEIL – ACIER INOXYDABLE A2

DIN 444B AUGENSCHRAUBEN – ROSTFREISTAHL A2



ISO :-  
DIN : 444B  
NEN : 2310 B  
ANSI :-  
BS :-  
NF :-



**M**  
**RVS**  
**A2**

P		0,8	1	1,25	1,5	1,75	2
	1	16	18	22	26	30	34
b	2	-	-	28	32	36	40
	3	-	-	-	-	49	53
d2 (H9)		5	6	8	10	12	14
d3 (max.)		12	14	18	20	25	28
S (max.)		6	7	9	12	14	16
d	LENGTE	M5	M6	M8	M10	M12	M14
25		61790050025	61790060025	61790080025	61790100025	61790120025	
30		61790050030	61790060030	61790080030	61790100030	61790120030	
35		61790050035	61790060035	61790080035	61790100035	61790120035	
40		61790050040	61790060040	61790080040	61790100040	61790120040	
45			61790060045	61790080045	61790100045	61790120045	
50			61790060050	61790080050	61790100050	61790120050	61790140050
55			61790060055	61790080055	61790100055	61790120055	61790140055
60			61790060060	61790080060	61790100060	61790120060	61790140060
65			61790060065	61790080065	61790100065	61790120065	61790140065
70			61790060070	61790080070	61790100070	61790120070	61790140070
75			61790060075	61790080075	61790100075	61790120075	61790140075
80			61790060080	61790080080	61790100080	61790120080	61790140080
85				61790080085	61790100085	61790120085	61790140085
90				61790080090	61790100090	61790120090	61790140090
95				61790080095	61790100095	61790120095	61790140095
100				61790080100	61790100100	61790120100	61790140100
105				61790080105	61790100105	61790120105	61790140105
110				61790080110	61790100110	61790120110	61790140110
115				61790080115	61790100115	61790120115	61790140115
120				61790080120	61790100120	61790120120	61790140120
125				61790080125	61790100125	61790120125	61790140125
130				61790080130	61790100130	61790120130	61790140130
135				61790080135	61790100135	61790120135	61790140135
140				61790080140	61790100140	61790120140	61790140140
145						61790120145	61790140145
150						61790120150	61790140150
160						61790120160	61790140160
170						61790120170	61790140170
180						61790120180	61790140180
190						61790120190	61790140190
200						61790120200	61790140200
210							
220							
230							
240							
250							

Knevelschroeven M14, M18 en M22 zijn niet meer in de actuele norm omschreven.

1: L ≤ 125 mm.

2: 125 mm < L ≤ 200 mm.

3: L > 200 mm.

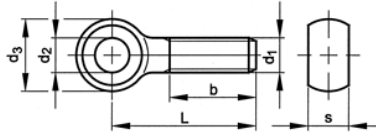


## DIN 444B KNEVELSCHROEVEN – ROESTVASTSTAAL A2

DIN 444B EYE BOLTS – STAINLESS STEEL A2

DIN 444B CORPS DE BOULON A OEIL – ACIER INOXYDABLE A2

DIN 444B AUGENSCHRAUBEN – ROSTFREISTAHL A2



ISO :-  
DIN : 444B  
NEN : 2310 B  
ANSI :-  
BS :-  
NF :-



**M**  
**RVS**  
**A2**

P		2	2,5	2,5	2,5	3	3
	1	38	42	46	50	54	60
b	2	44	48	52	56	60	66
	3	57	61	65	69	73	79
d2 (H9)		16	18	18	18	22	25
d3 (max.)		32	32	40	42	45	50
S (max.)		17	20	22	24	25	27
d		M16	M18	M20	M22	M24	M27
LENGTE							
25							
30							
35							
40							
45							
50							
55							
60		61790160060	61790180060	61790200060			
65		61790160065	61790180065	61790200065			
70		61790160070	61790180070	61790200070			
75		61790160075	61790180075	61790200075			
80		61790160080	61790180080	61790200080	61790220080	61790240080	
85		61790160085	61790180085	61790200085	61790220085	61790240085	
90		61790160090	61790180090	61790200090	61790220090	61790240090	
95		61790160095	61790180095	61790200095	61790220095	61790240095	
100		61790160100	61790180100	61790200100	61790220100	61790240100	
105		61790160105	61790180105	61790200105	61790220105	61790240105	
110		61790160110	61790180110	61790200110	61790220110	61790240110	
115		61790160115	61790180115	61790200115	61790220115	61790240115	
120		61790160120	61790180120	61790200120	61790220120	61790240120	61790270120
125		61790160125	61790180125	61790200125	61790220125	61790240125	61790270125
130		61790160130	61790180130	61790200130	61790220130	61790240130	61790270130
135		61790160135	61790180135	61790200135	61790220135	61790240135	61790270135
140		61790160140	61790180140	61790200140	61790220140	61790240140	61790270140
145		61790160145	61790180145	61790200145	61790220145	61790240145	61790270145
150		61790160150	61790180150	61790200150	61790220150	61790240150	61790270150
160		61790160160	61790180160	61790200160	61790220160	61790240160	61790270160
170		61790160170	61790180170	61790200170	61790220170	61790240170	61790270170
180		61790160180	61790180180	61790200180	61790220180	61790240180	61790270180
190		61790160190	61790180190	61790200190	61790220190	61790240190	61790270190
200		61790160200	61790180200	61790200200	61790220200	61790240200	61790270200
210				61790200210	61790220210	61790240210	
220				61790200220	61790220220	61790240220	
230				61790200230			
240				61790200240			
250				61790200250			
260				61790200260			
270							
280							
290							

Knevelschroeven M14, M18 en M22 zijn niet meer in de actuele norm omschreven.

1: L ≤ 125 mm.

2: 125 mm < L ≤ 200 mm.

3: L > 200 mm.

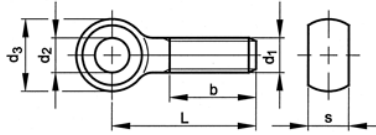


**DIN 444B KNEVELSCHROEVEN – ROESTVASTSTAAL A2**

DIN 444B EYE BOLTS – STAINLESS STEEL A2

DIN 444B CORPS DE BOULON A OEIL – ACIER INOXYDABLE A2

DIN 444B AUGENSCHRAUBEN – ROSTFREISTAHL A2



ISO :-  
DIN : 444B  
NEN : 2310 B  
ANSI :-  
BS :-  
NF :-



**M**  
**RVS**  
**A2**

P		3,5	3,5	4	4,5		
	1	66					
b	2	72	78	84	96		
	3	85	91	97	109		
d2 (H9)		28	30	32	38		
d3 (max.)		55	60	65	78		
S (max.)		30	34	38	44		
<b>d</b>		<b>M30</b>	<b>M33</b>	<b>M36</b>	<b>M42</b>		
<b>LENGTE</b>							
100							
105							
110							
115							
120		61790300120	61790330120	61790360120	61790420120		
125		61790300125	61790330125	61790360125	61790420125		
130		61790300130	61790330130	61790360130	61790420130		
135		61790300135	61790330135	61790360135	61790420135		
140		61790300140	61790330140	61790360140	61790420140		
145		61790300145	61790330145	61790360145	61790420145		
150		61790300150	61790330150	61790360150	61790420150		
160		61790300160	61790330160	61790360160	61790420160		
170		61790300170	61790330170	61790360170	61790420170		
180		61790300180	61790330180	61790360180	61790420180		
190		61790300190	61790330190	61790360190	61790420190		
200		61790300200	61790330200	61790360200	61790420200		
210				61790360210	61790420210		
220				61790360220	61790420220		
230				61790360230	61790420230		
240				61790360240	61790420240		
250				61790360250	61790420250		
260				61790360260	61790420260		
270							
280							
290							

Knevelschroeven M14, M18 en M22 zijn niet meer in de actuele norm omschreven.

1: L ≤ 125 mm.

2: 125 mm < L ≤ 200 mm.

3: L > 200 mm.

