

Klavs Weiss



A graphic process in black and white, workbook 2003 - 2004



top

A graphical process in black and white.

Maple tree,
AAlgaarden, Sweden
2003 - 2004



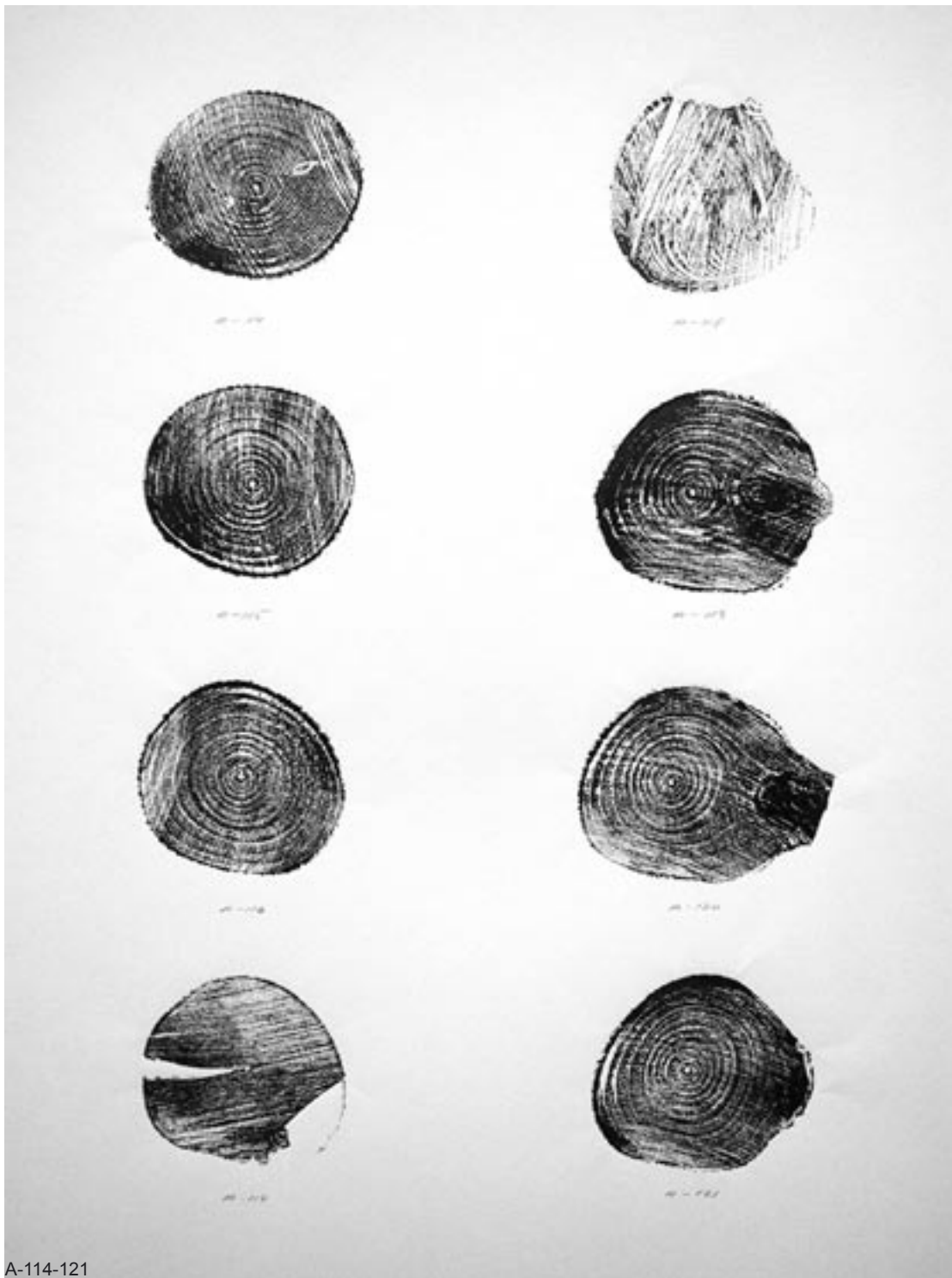
root



cut down the maple - tree

The reconstructed / assembled tree will be shown on the floor, and the prints in a poster display / rack, fixed to the wall or free-standing on the floor, as a big book.





A-114-121



All branches smaller than 2 cm diameter, cut off and thrown away



The whole tree, cut in manageable pieces

around 8,5 meter high



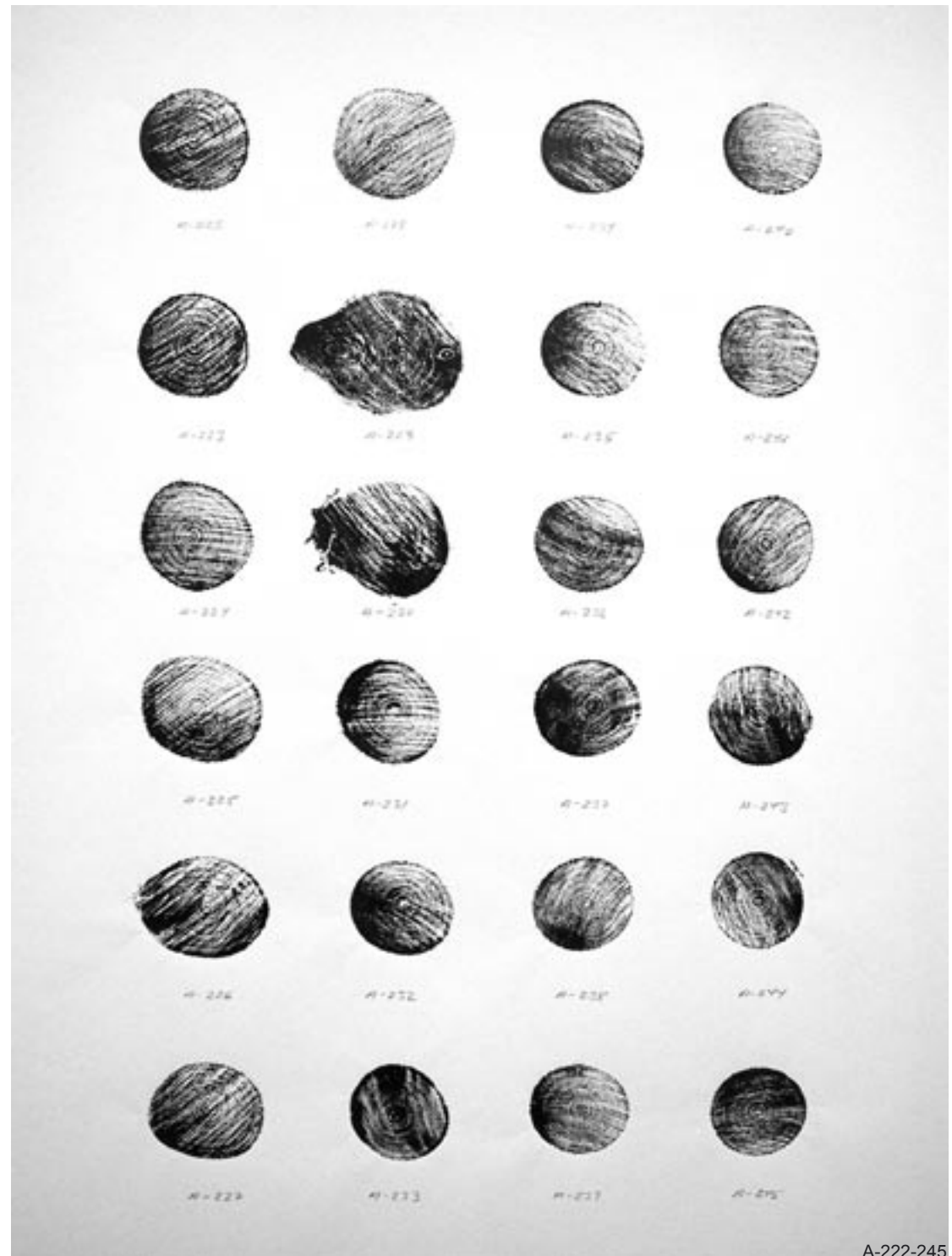
Cut the whole tree in 2 cm. thick slices

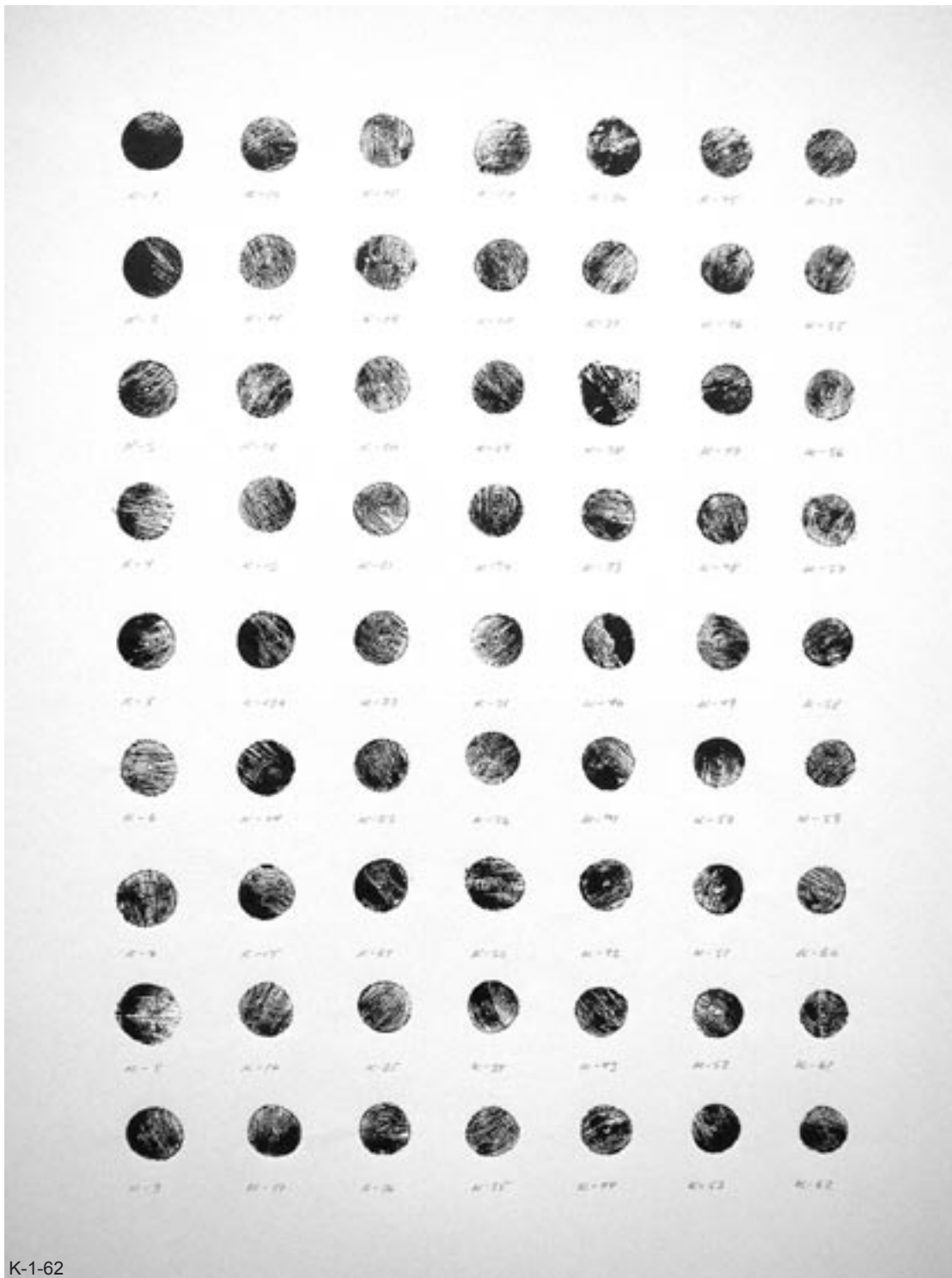


Every piece get a number.
after the system: bottom to top
ex. A-1, A-2, A-3 and B-1, B-2, B-3 etc.

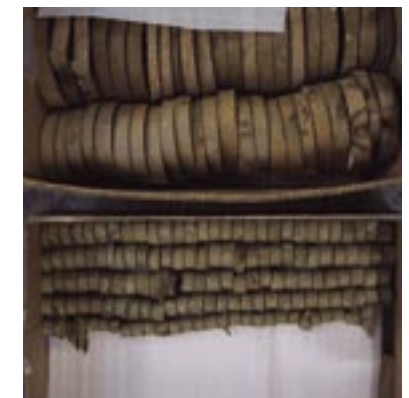
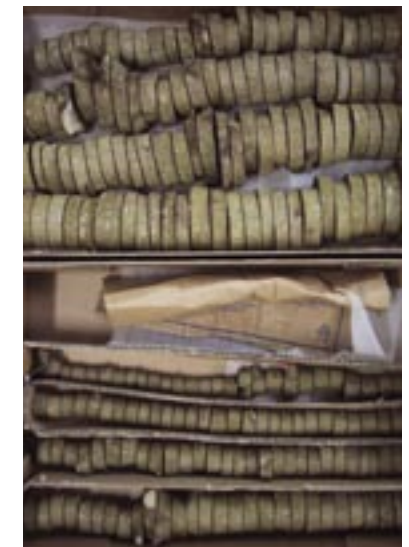


Packed them all in cartons





Still cutting



All slices brought to the studio

The maple tree is about 15 to 18 years old, assumed from accounting the grains. It has been cut down before, which appears of the photos, it has more than one trunk from the root. But just the biggest one is used for this project.

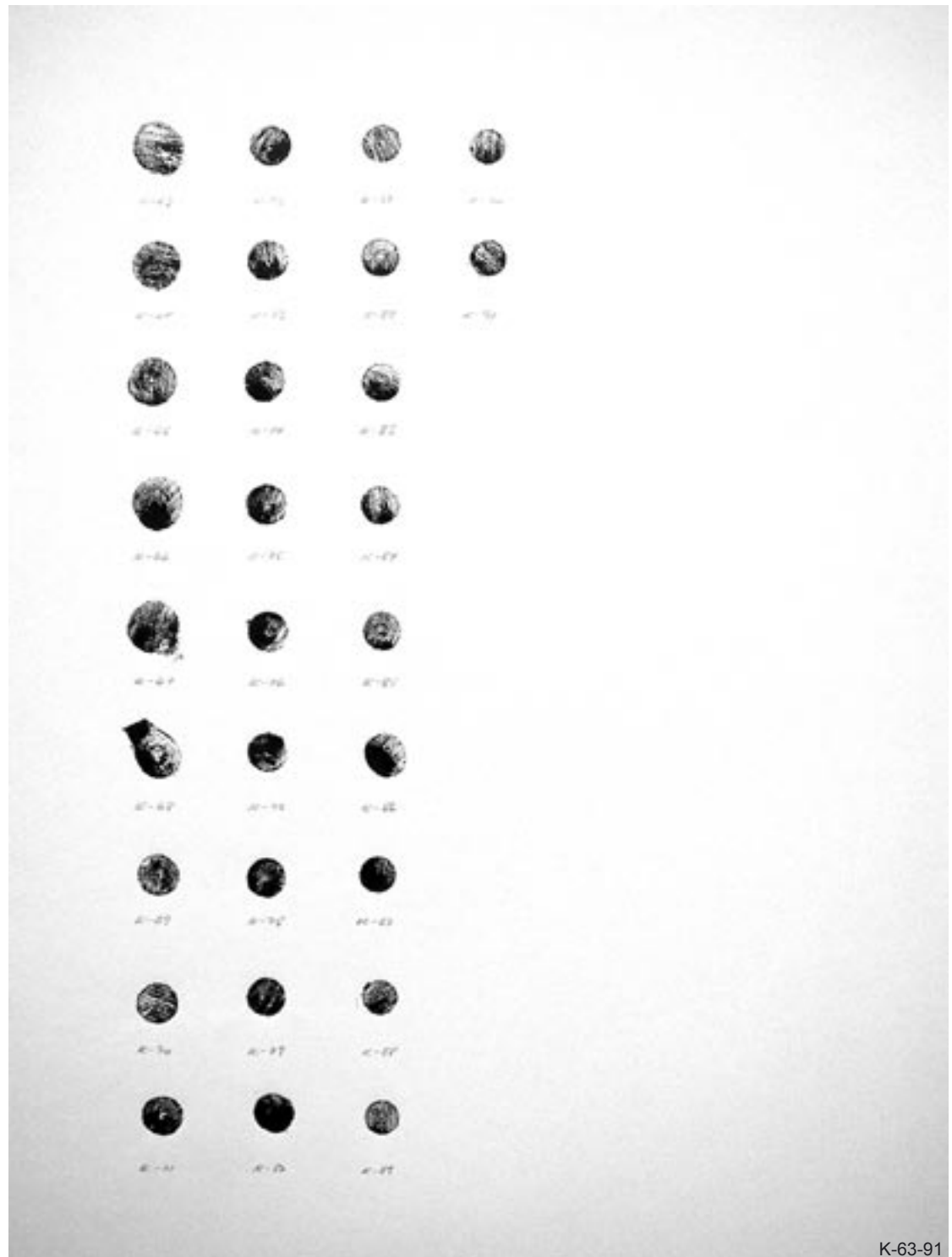


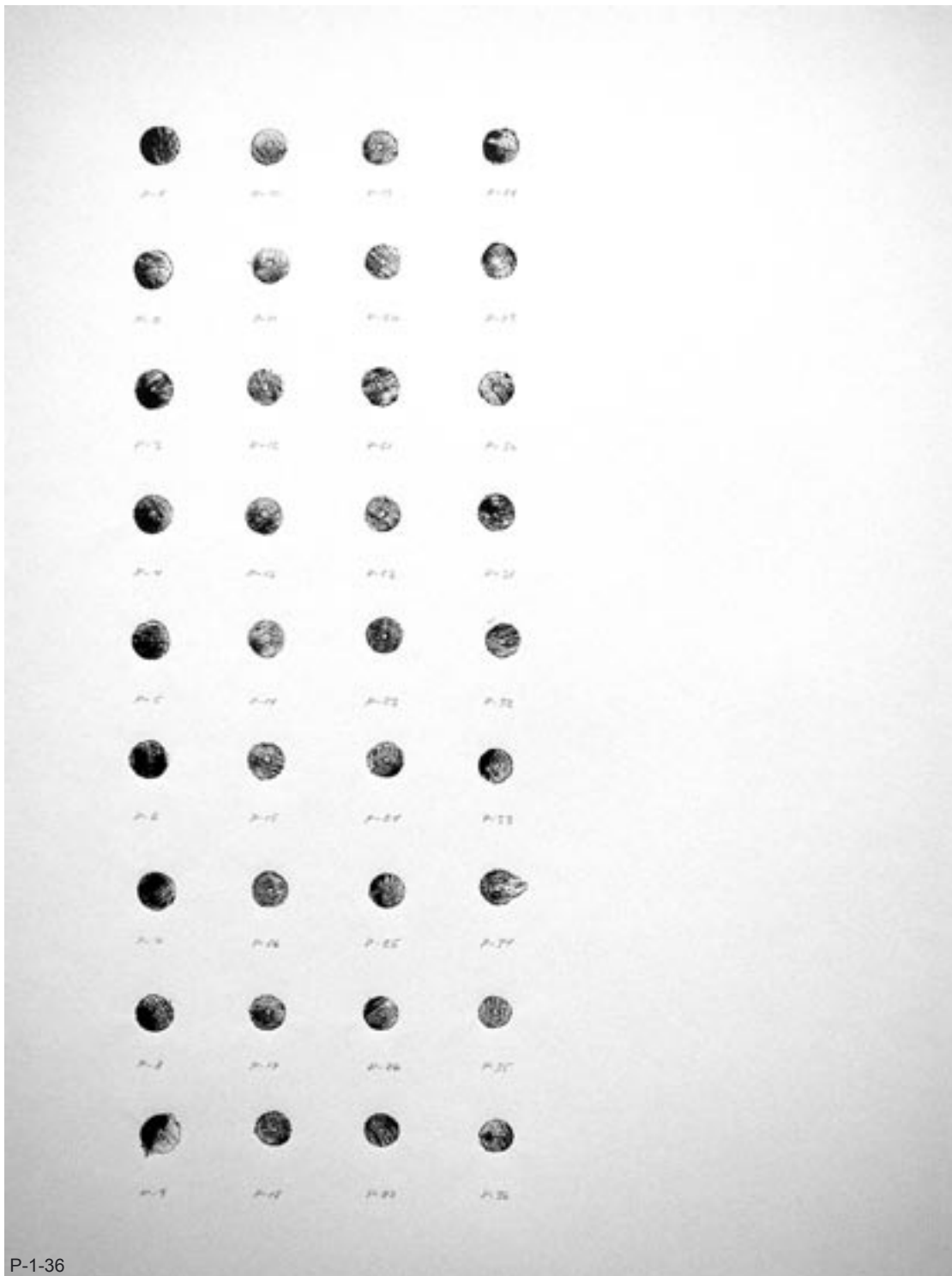
Reconstruction



All the slices taken together

Sheet	Appellation	Numbers	Irregularities	Total
1	A	001 to 006		
2	A	007 to 012		
3	A	013 to 018		
4	A	019 to 024		
5	A	025 to 030		
6	A	031 to 036		
7	A	037 to 042		
8	A	043 to 048		
9	A	049 to 056		
10	A	057 to 064		
11	A	065 to 072		
12	A	073 to 080		
13	A	081 to 088		
14	A	089 to 096		
15	A	097 to 104		
16	A	105 to 113	minus 111	
17	A	114 to 121		
18	A	122 to 129		
19	A	130 to 137		
20	A	138 to 149		
21	A	150 to 161		
22	A	162 to 176		
23	A	177 to 191		
24	A	192 to 206		
25	A	207 to 221		
26	A	222 to 245		
27	A	246 to 280		
28	A	281 to 314	plus 291a	
29	A	315 to 354		
30	A	355 to 357		357
31	B	001 to 036	minus 021	
32	B	037 to 099		
33	B	100 to 138		137
34	C	001 to 035		
35	C	036 to 098		
36	C	099 to 113	plus 099a	114
37	D	001 to 035		
38	D	036 to 070		
39	D	071 to 133		133
40	E	001 to 040		40
41	F	001 to 011		11
42	G	001 to 007		7
43	H	001 to 035		
44	H	036 to 072	minus 054, 055	
45	H	073 to 107		
46	H	108 to 145	minus 132	142
47	I	001 to 055		55
48	J	001 to 020		20
49	K	001 to 062	plus 13a	
50	K	063 to 091		92
51	L	001 to 059		59
52	M	001 to 064	minus 041	
53	M	065 to 075		74
54	N	001 to 017		17
55	O	001 to 064	minus 028	
56	O	065 to 073		72
57	P	001 to 036		36
58	Q	001 to 037		37
				1403





Cleaning all the pieces for sawdust, earth etc.

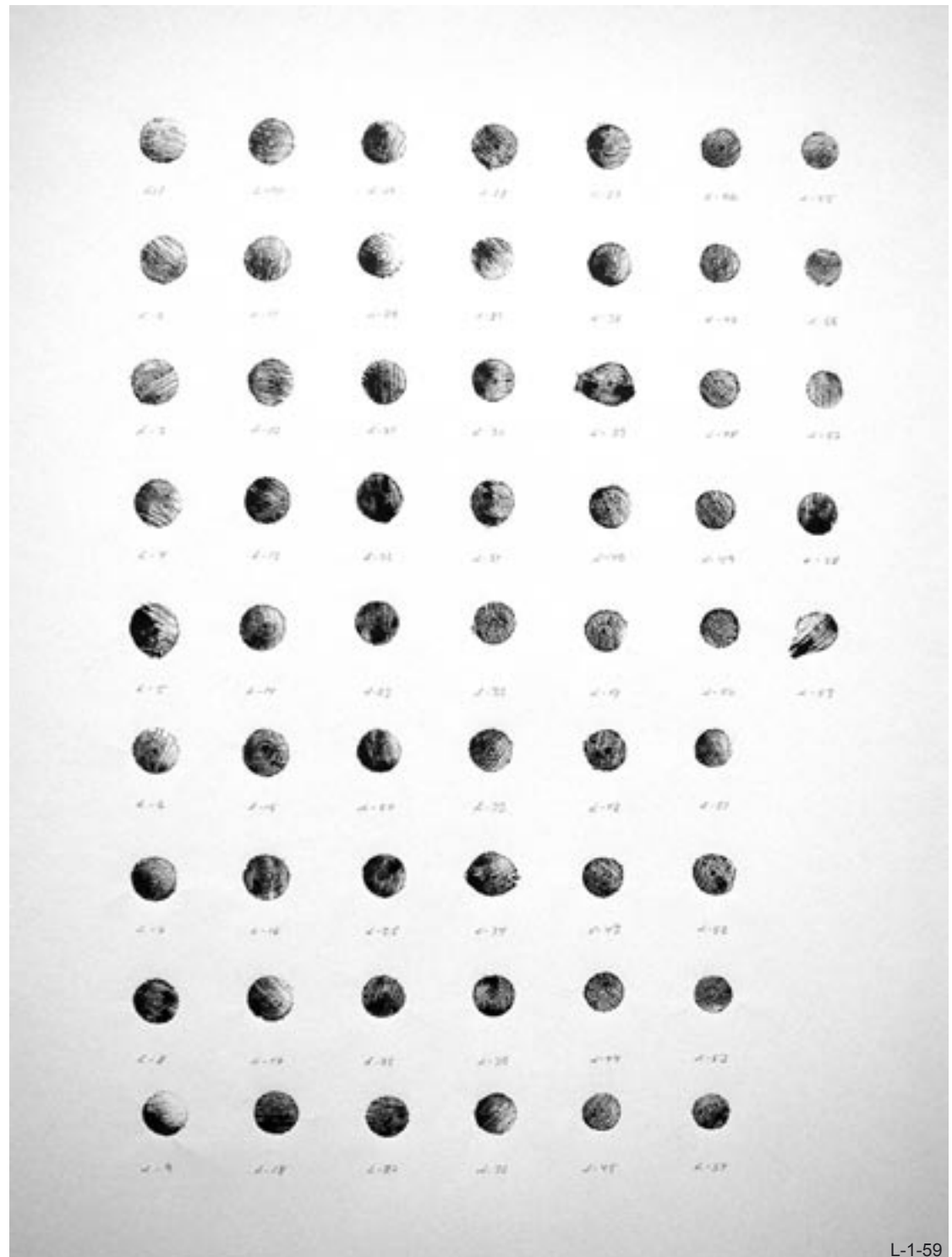


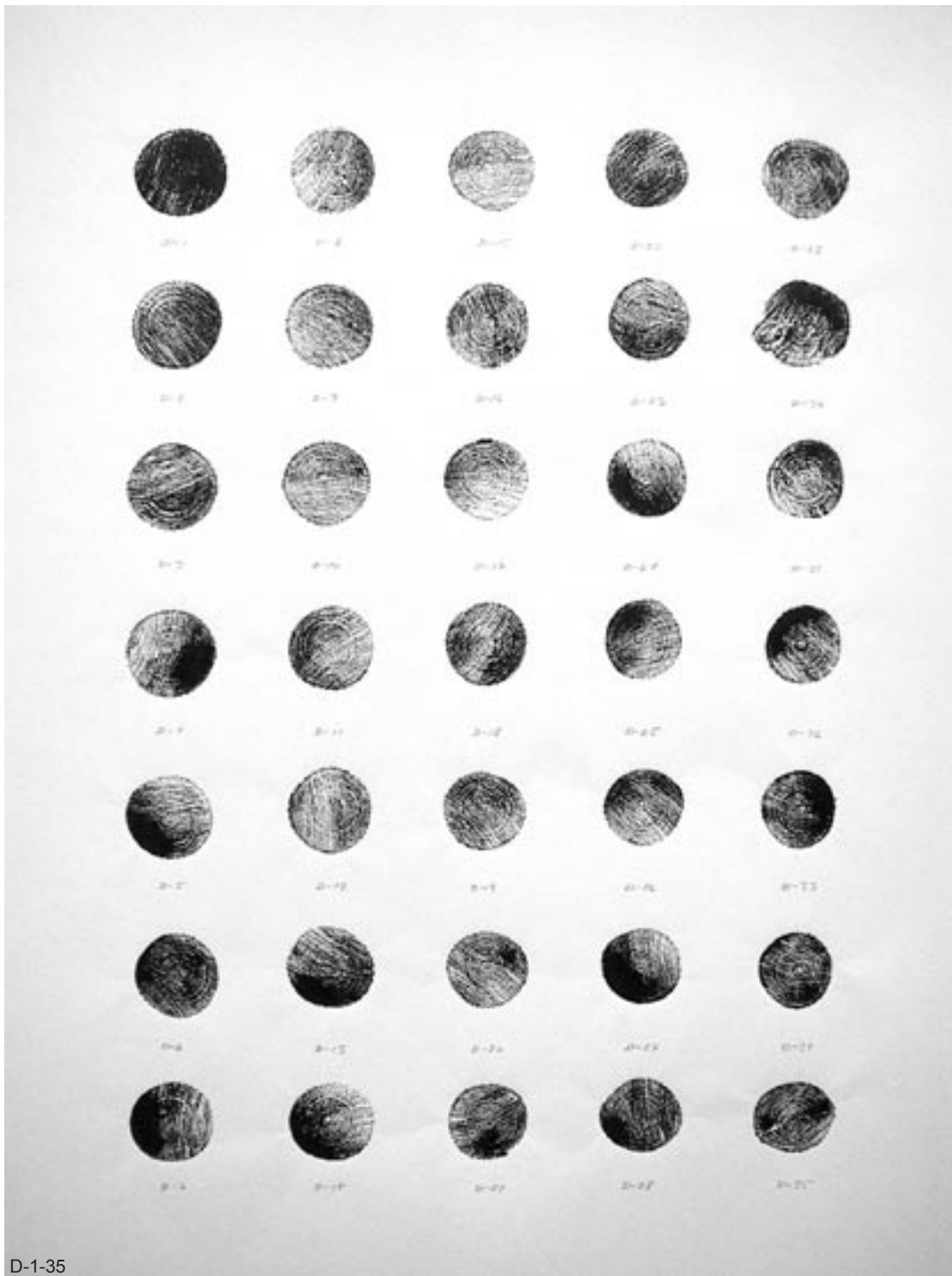
Printing all the pieces





Continue printing...





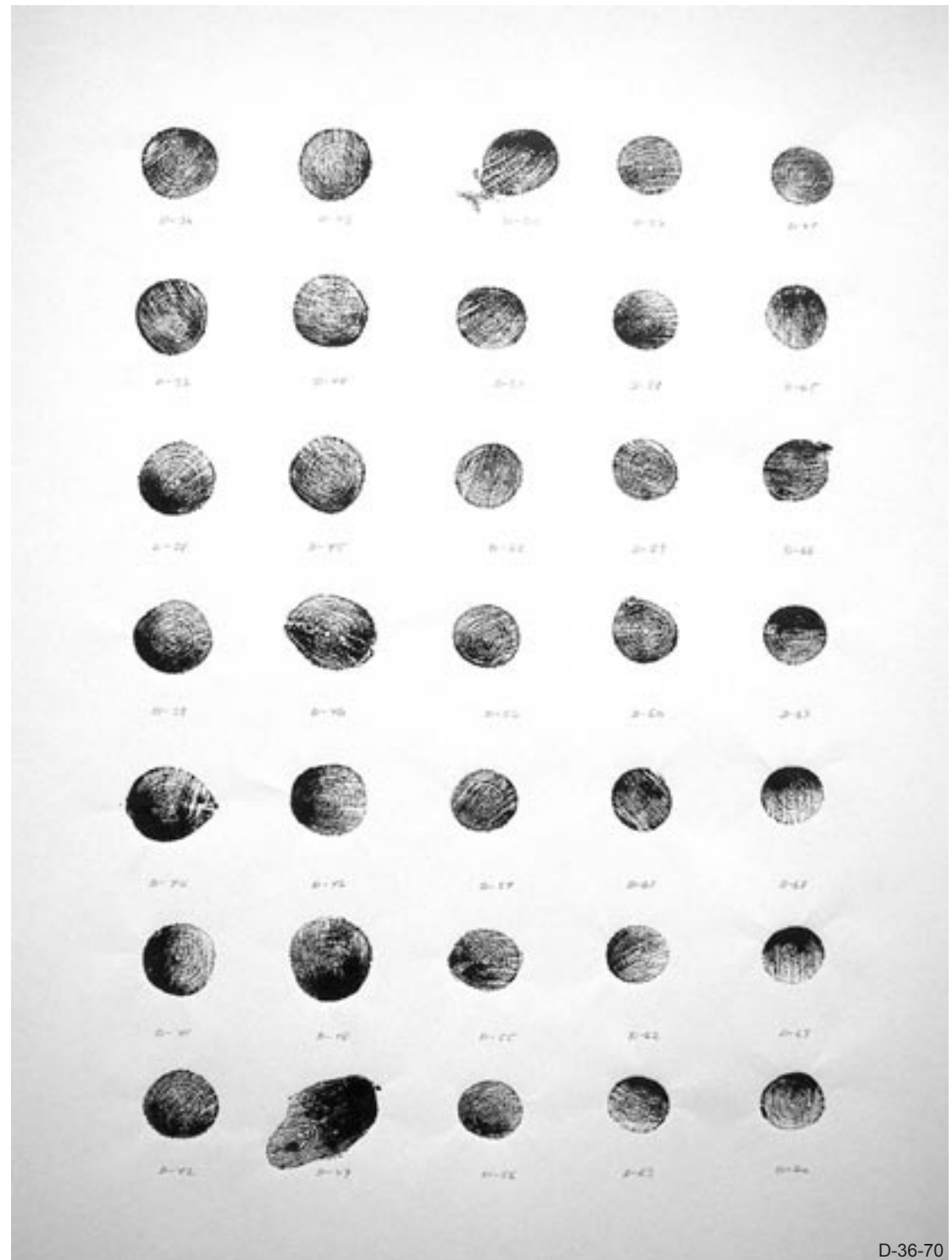
Continue printing...

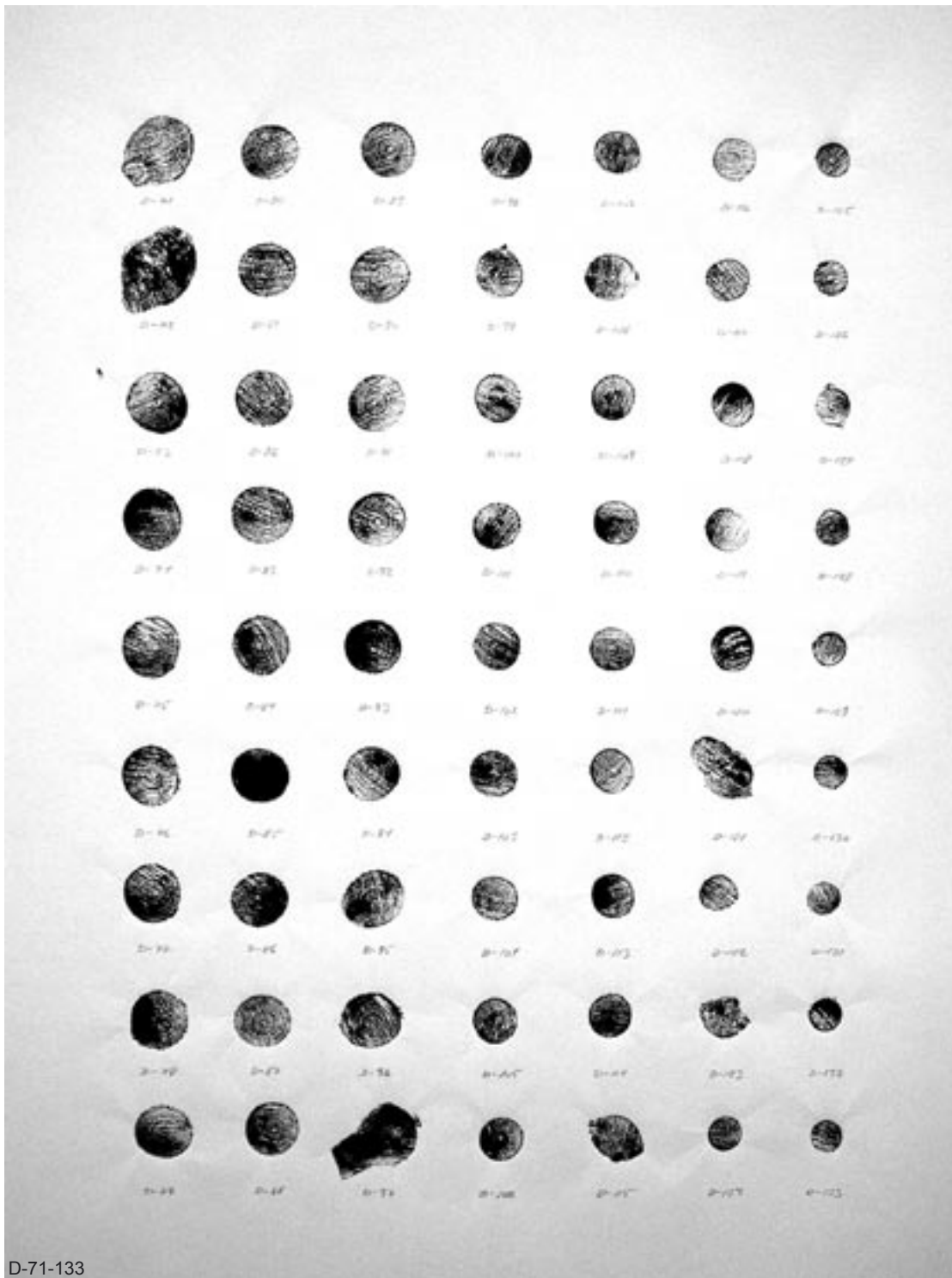


Drying the finished print



Still printing ...



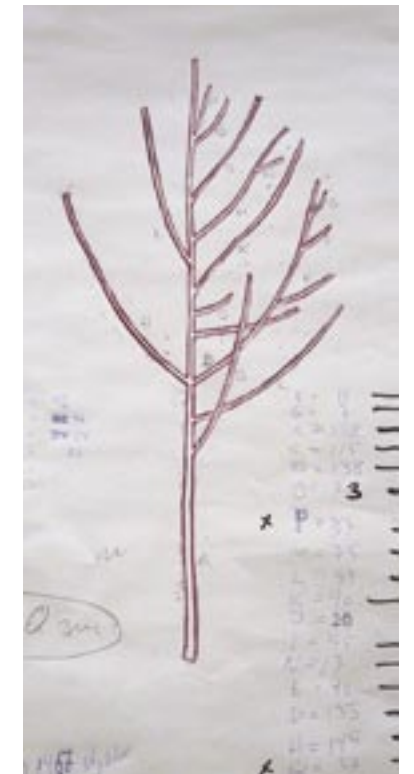


D-71-133

Printed on 58 sheets,
86 x 61cm
+ 17 index sheets (same
size) with an illustration,
like a key-map (linocut and mov-
able types) of the whole tree
marked with the capital letters
of each branch. And showing
the number of pieces from each
branch. In that way it is possible
to see which branch the single
piece and print comes from.



Printing the last pieces...
a total of 1403 pieces



Printed on thick suitable paper

sketch - like a key-map



All the slices assembled on the floor

All the the slices assembled on the floor



The print showed in a poster display like a big book

The print hung in a posterdisplay like a big book



slices packed



Red alder tree
Lystlund, Denmark
2003 - 2004



Cut down the tree

The red alder tree will be shown reconstructed / assembled on the floor, and the print pinned up on the wall.

In a suitable show-room, it should be possible to show both the maple tree and the red alder tree, related to the rooms two longest sides





Fallen



Cut of the branches, and mark them with capital letters





The stumb



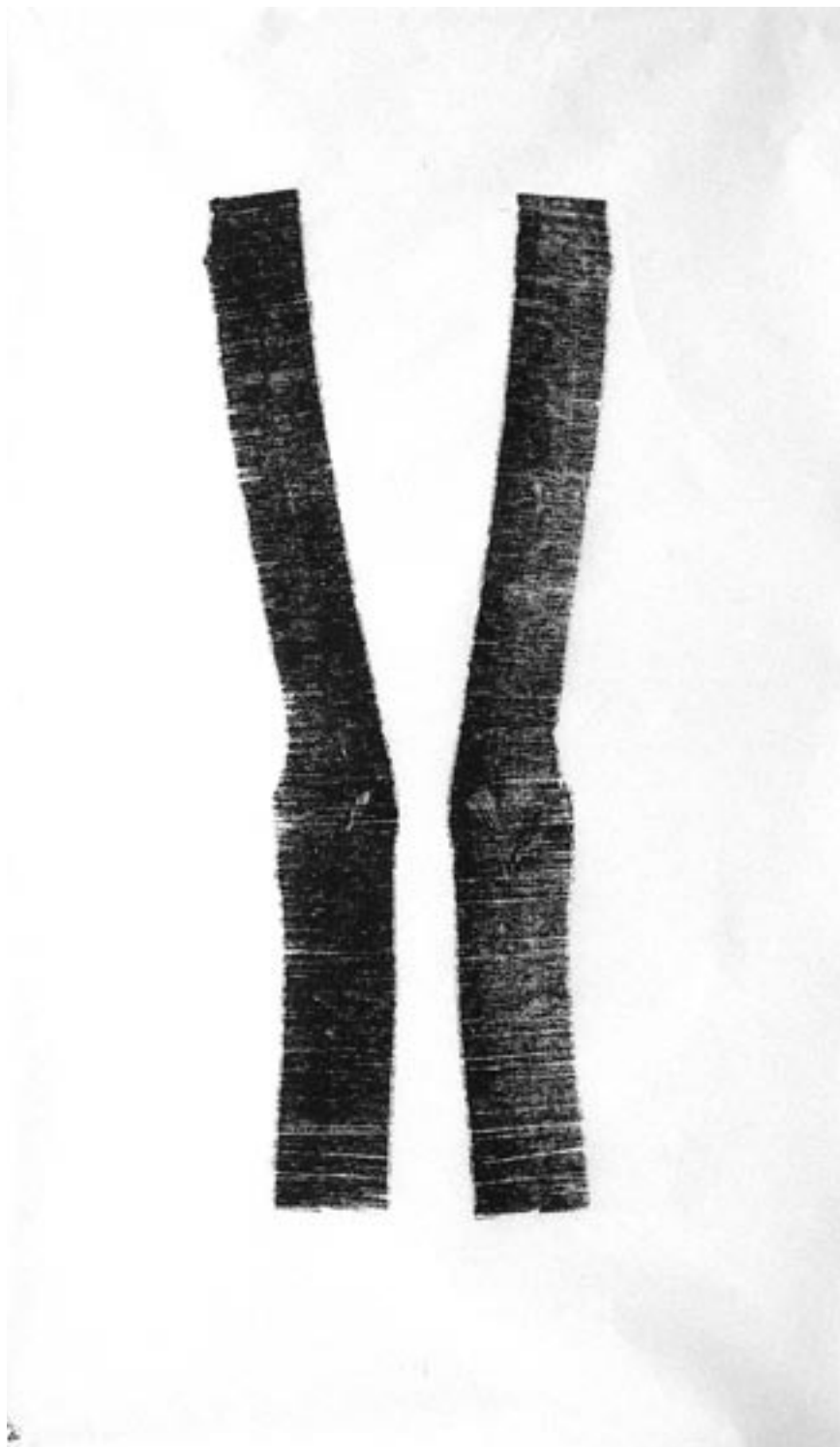
Ready for transport



The red alder tree on the lawn beside the studio

Around 25 years old, and nearly 8,5 meter heigh





The whole tree is cut up in manageable pieces, and brought to the carpenter's workshop, to be cleaved on the band saw



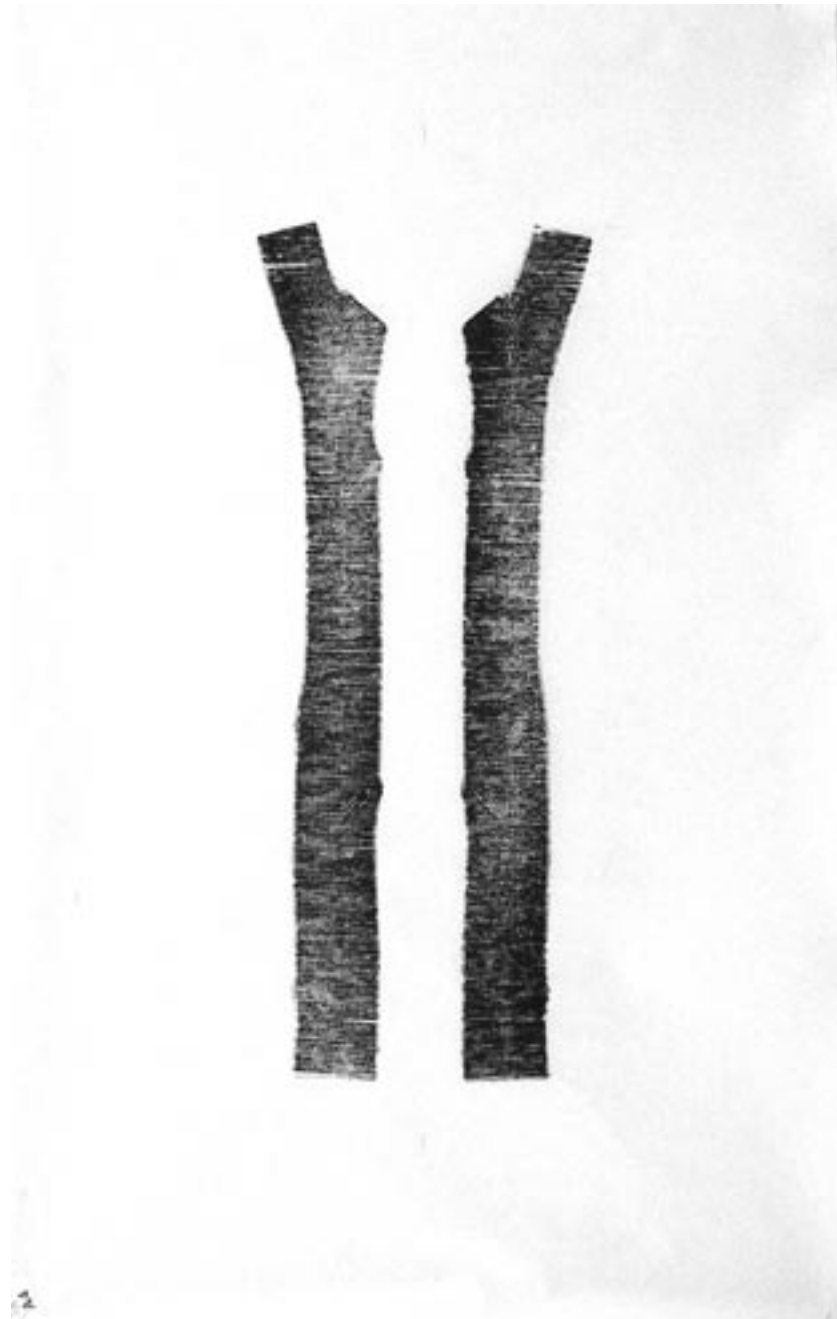
Numbering the pieces - making a sketch of a key-map

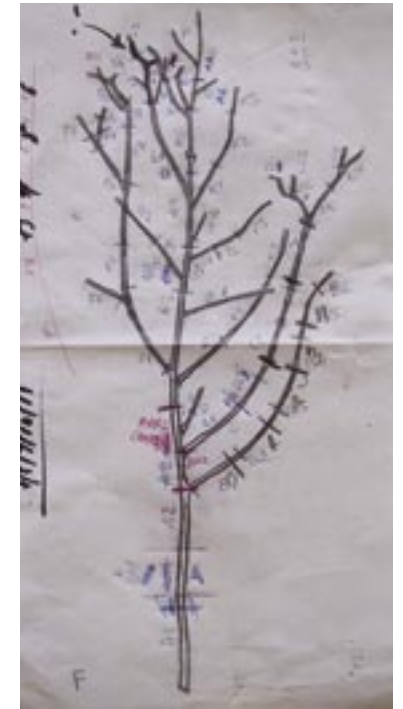
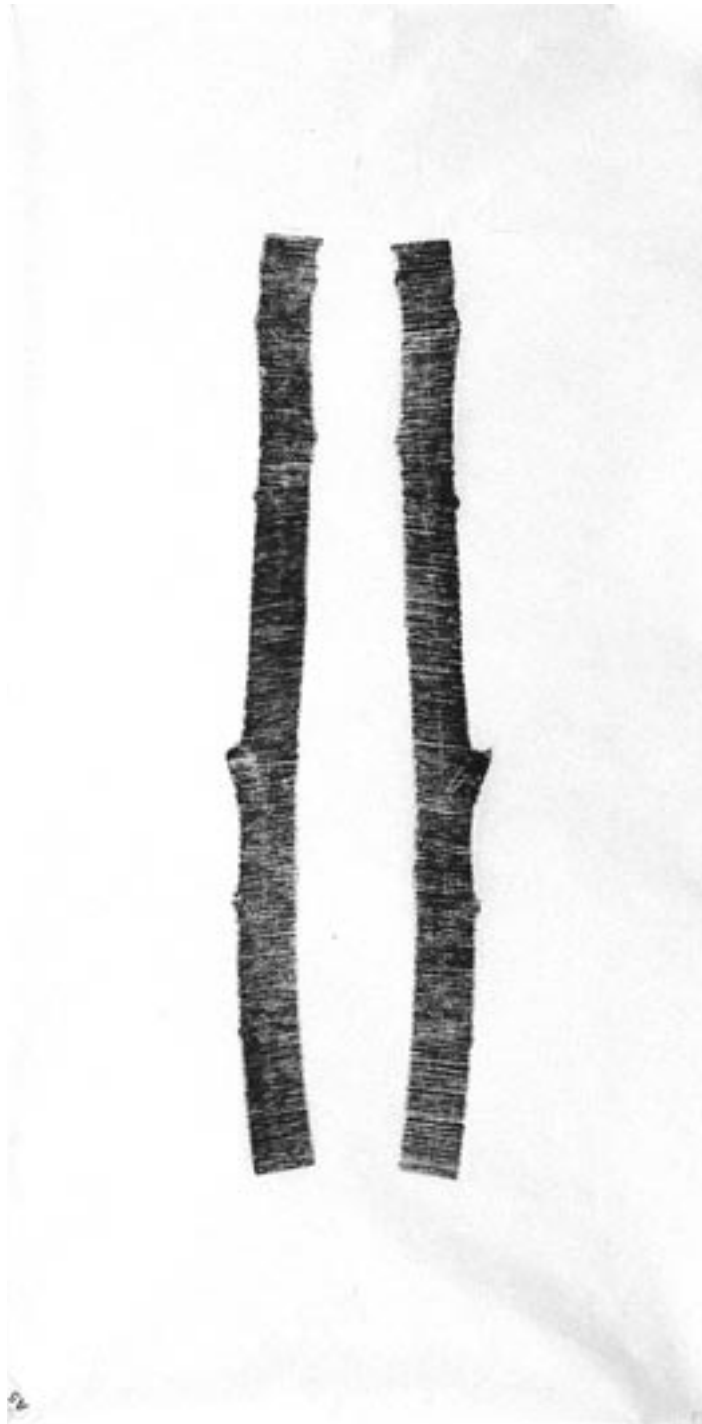


Trying make a general view



Cleaved and numbered branches





Key-map
The trunk = A.....
The branches = A,B,C,D etc.

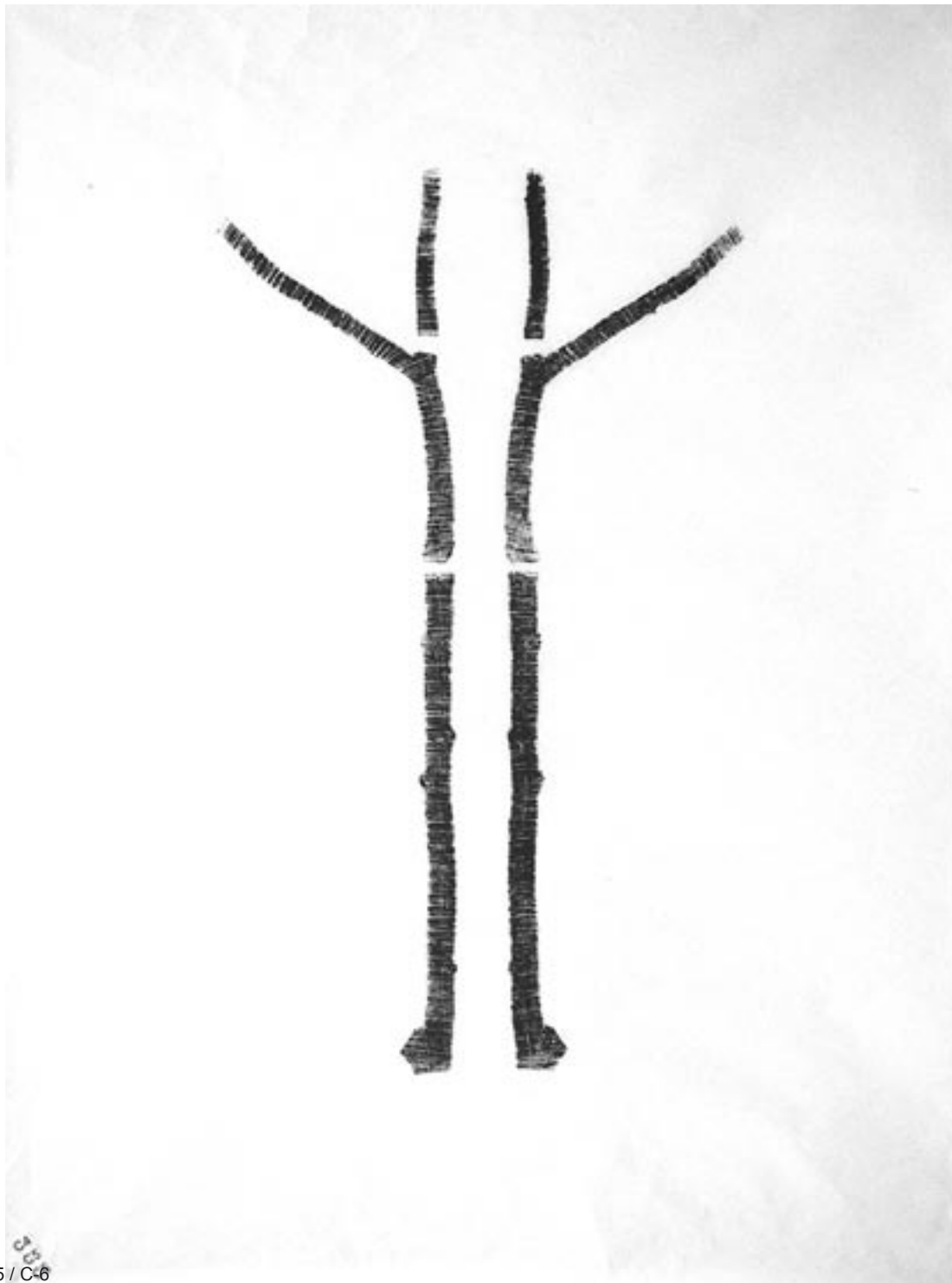


Piece of the cleaved trunk

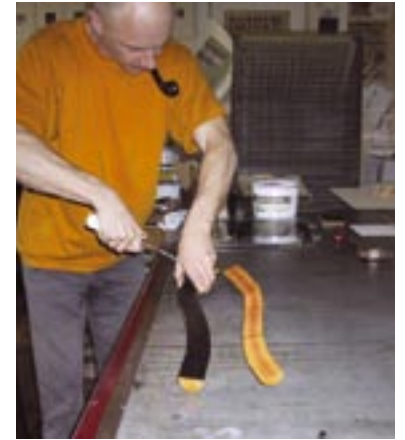


Printing all the pieces...





C-4 / C-5 / C-6



Continue printing...

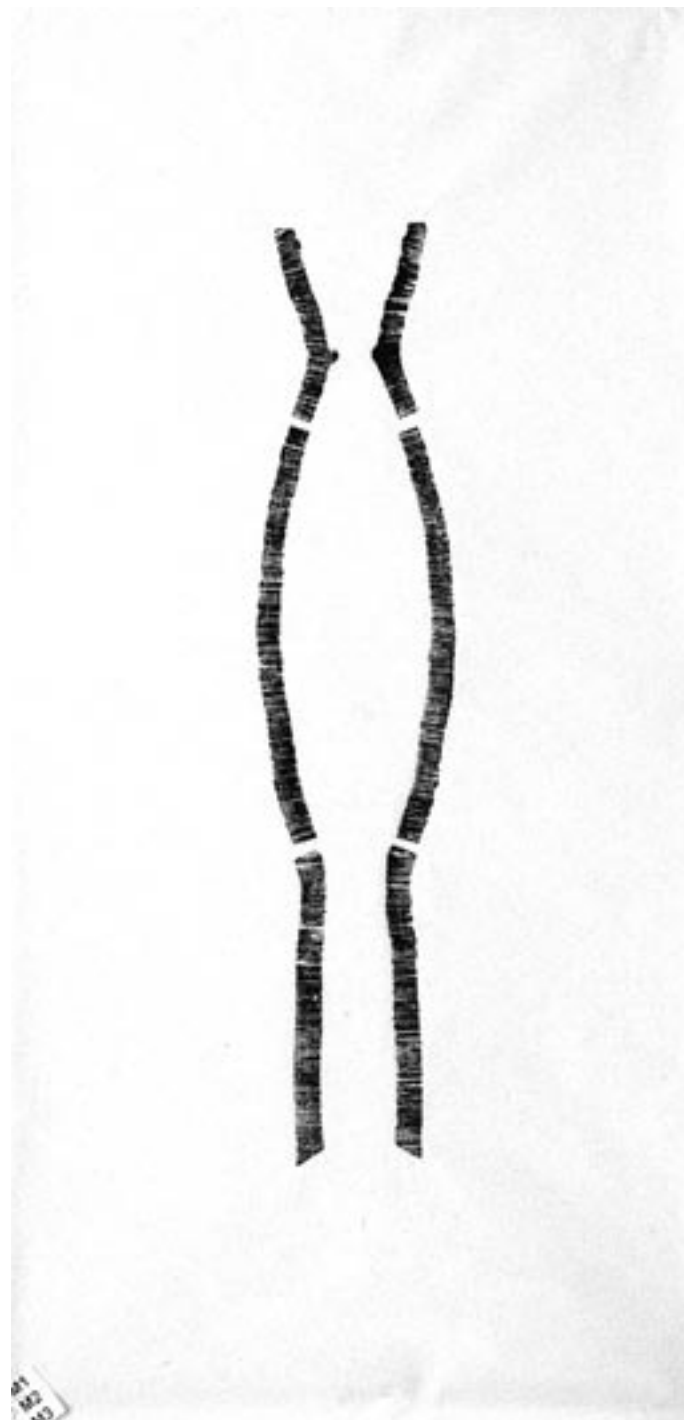


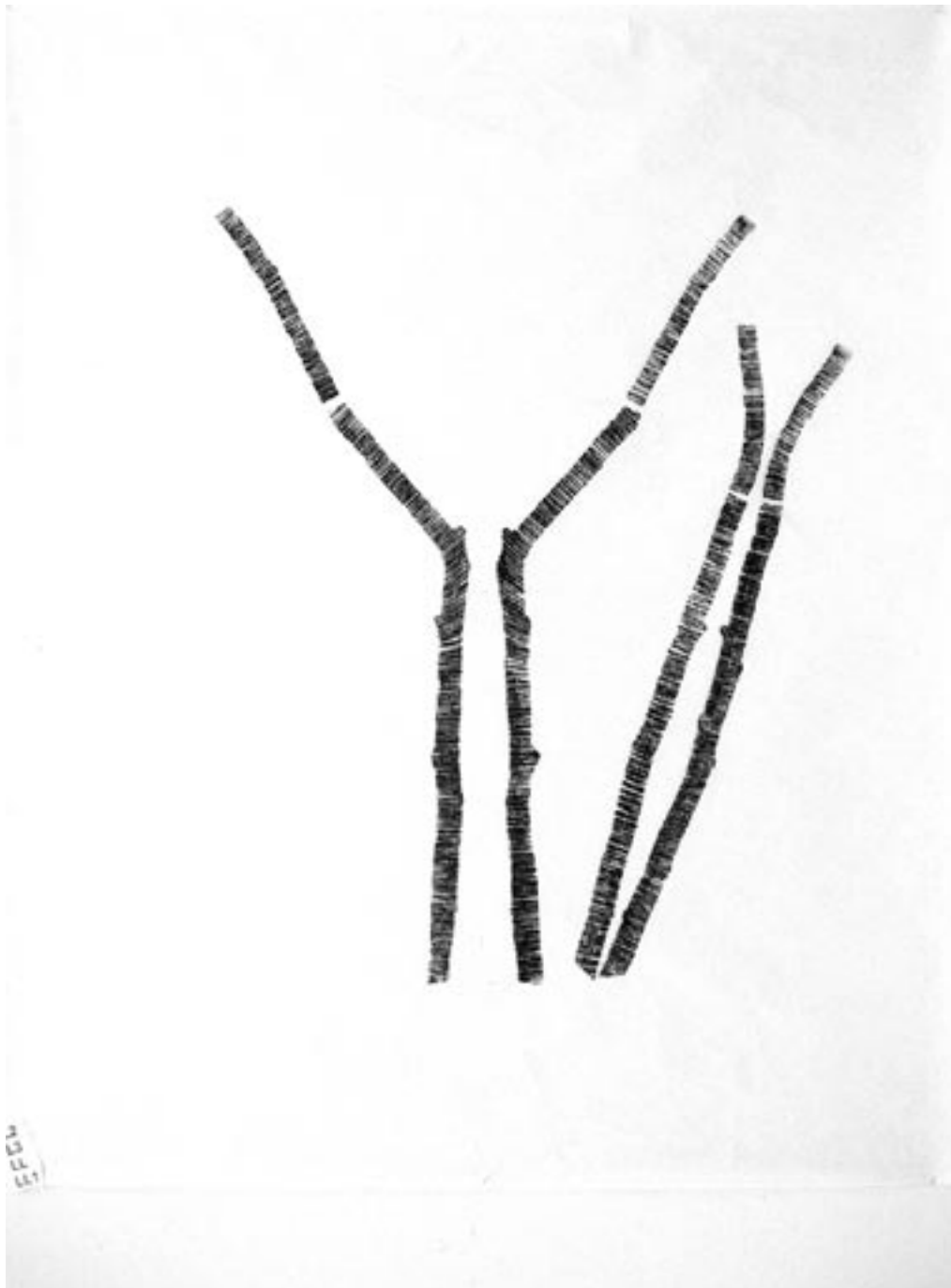
Printed on thin Wenzhou paper



Total number of cleaved pieces:
66

- | | |
|------|-----|
| A1 | F9 |
| AA1 | F10 |
| A2 | F11 |
| AA2 | G1 |
| AAA2 | H1 |
| A3 | H2 |
| AA3 | I1 |
| A4 | I2 |
| A5 | I3 |
| AA6 | J1 |
| A6 | K1 |
| B1 | K2 |
| B2 | K3 |
| B3 | L1 |
| B4 | L2 |
| B5 | L3 |
| B6 | LL |
| C1 | LL1 |
| CCC | M1 |
| C2 | M2 |
| C3 | M3 |
| C4 | N1 |
| C5 | N2 |
| C6 | O |
| CC | P |
| CC1 | |
| CC2 | |
| D1 | |
| D2 | |
| E1 | |
| E2 | |
| E3 | |
| F1 | |
| FF | |
| F2 | |
| F3 | |
| F4 | |
| F5 | |
| F6 | |
| F7 | |
| F8 | |





Photos of all the printed sheets,
JPEG and TIF

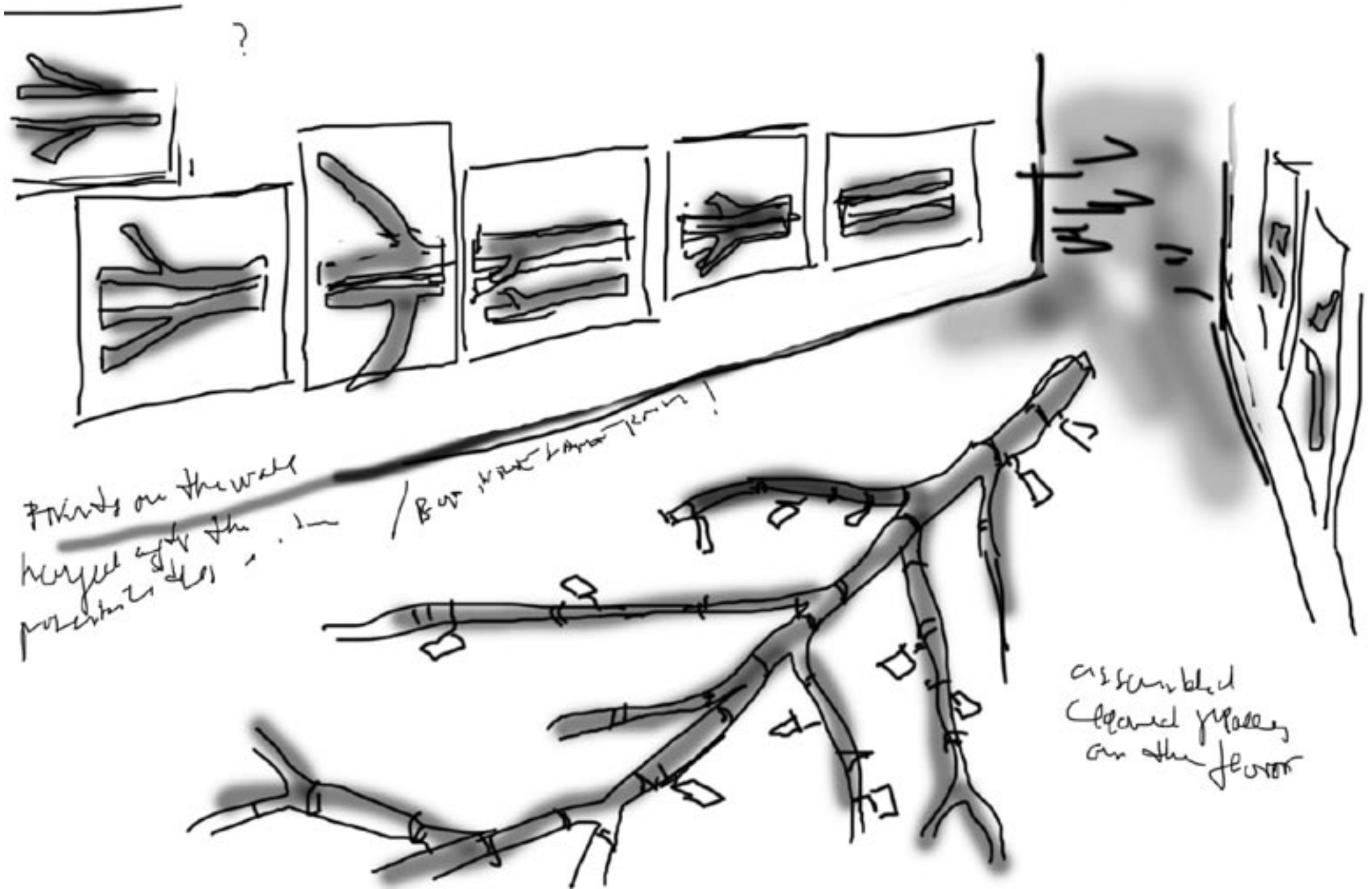
- A1 = 1890
- AA1 = 1906
- A2 = 1891
- AA2 = 1980
- AAA2 = 1892, 1893
- A3 = 1896
- AA3 = 1905
- A4 = 1897, 1898
- A5 = 1899
- A6 = 1900
- A6/O1 = 1987
- AA6/P1 = 1983
- B1 = 1981
- B2 = 2005
- B3 = 1978
- B4 = 1979
- B5/B6 = 1895
- C1 = 1901, 1902
- CCC = 1957
- C2 = 1963
- C3 = 1958
- C4/C5/C6 = 1964
- CC/CC1/CC2 = 1965
- D1/D2 = 1907
- E1 = 1903
- E2 = 1894
- E3 = 1904
- F1 = 1974
- FF = 1972, 1973
- F2 = 1961
- F3 = 1976
- F4/F5/F6 = 1960
- F7 = 1975
- F8/F9/F10/F11 = 2011
- G1 = 1962
- H1/H2 = 1909, 1969
- I1/I2 = 1913, 1966
- I3 = 1910, 1968
- J1 = 2007
- K1 = 1908
- K2 = 1959
- K3 = 1911
- L1 = 1984
- L2/L3/LL/LL1 = 1985, 1986
- M1/M2/M3 = 1912, 1967
- N1/N2 = 1988
- Index = 1970, 1971



The cleaved pieces joined together
after printing the lengthwise section



All numbered on small labels



prints on the wall - hanged after the specific place' possibilities, in the same room as the pieces and in an order corresponding to the pieces

assembled cleaved pieces on the floor



cleaved pieces packed