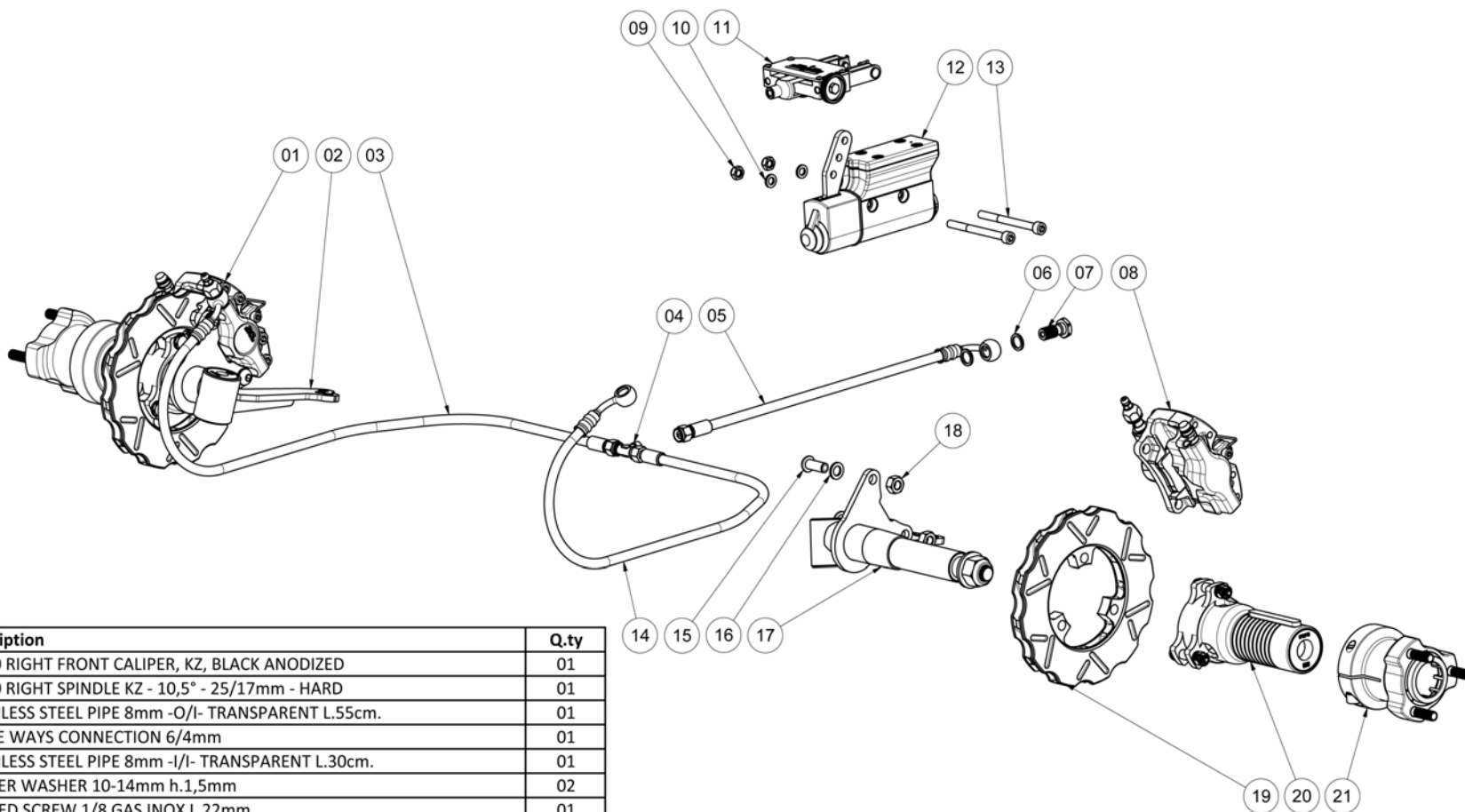


KB255

CIK/FIA 20/FR/20



Pos.	Code	Description	Q.ty
01	KB210N-DX	MA20 RIGHT FRONT CALIPER, KZ, BLACK ANODIZED	01
02	KF25-MA20-DX-KZ-H	MA20 RIGHT SPINDLE KZ - 10,5° - 25/17mm - HARD	01
03	KT308T-OI_055	STAINLESS STEEL PIPE 8mm -O/I- TRANSPARENT L.55cm.	01
04	K267B	THREE WAYS CONNECTION 6/4mm	01
05	KT308T-II_030	STAINLESS STEEL PIPE 8mm -I/I- TRANSPARENT L.30cm.	01
06	K412R	COPPER WASHER 10-14mm h.1,5mm	02
07	KT310L	DRILLED SCREW 1/8 GAS INOX L.22mm	01
08	KB210N-SX	MA20 LEFT FRONT CALIPER, KZ, BLACK ANODIZED	01
09	KVDA06BS	LOW SELF-LOCKING NUT M6 ZINC-PLATED	02
10	KVR0618S	WASHER 6x18mm ZINC-PLATED	02
11	KB066	BRAKE DISTRIBUTION FOR 4WP	01
12	KB030	BRAKE PUMP W/TRANSPARENT TANK	01
13	KVC06070S	CYLINDRICAL HEAD SCREW M6x70	02
14	KT308T-OI_043	STAINLESS STEEL PIPE 8mm -O/I- TRANSPARENT L.43cm.	01
15	KVB08020S	FILLISTER HEAD SCREW M8x20mm INSIDE HEXAGON ZINC-PLATED	04
16	KVR0813S	WASHER 8x13mm ZINC-PLATED	04
17	KF25-MA20-SX-KZ-H	MA20 LEFT SPINDLE KZ - 10,5° - 25/17mm - HARD	01
18	KVDM08S	METALBLOC NUT M8 ZINC-PLATED	04
19	K347-14-FLOT	FLOATING SELF-VENTIL. FRONT BRAKE DISK 150X14mm	02
20	KB214A-N	MA20 KZ FRONT DRUM - BLACK	02
21	K712	ALUMINIUM REAR HUB 40/77-8	02