

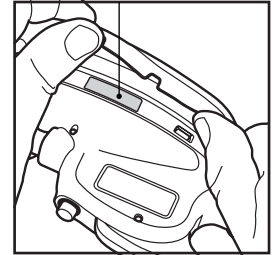
AirBoy[®] eXact Certificate

Calibration Certificate

Serial number: **XXXXXXX** Date: **DD/MM/YYYY** Inspector: **XXXXXXX** Inspection Station: **XXXXXX-XX**

1. Reference Pressure (bar)	A.AA	B.BB	C.CC	D.DD	E.EE
2. Displayed Pressure (bar)	A.AA	B.BB	C.CC	D.DD	E.EE
3. Calibrated measuring tolerance (bar)	± A.AA	± B.BB	± C.CC	± D.DD	± E.EE
Allowable measuring tolerance (bar) according to EN 12645:2014	± 0.08	± 0.08	± 0.16	± 0.16	± 0.16

Position of serial number and security seal



Technical Specifications

Pressure Range	0.2 → 10 bar • 2.9 → 145 psi 10 → 1000 kPa • 0.2 → 10.2 kg/cm ²
Pressure Resolution	0.01 bar / 0.1 psi / 1 kPa / 0.01 kg/cm ²
Accuracy according to	DS/EN 12645:2014, (± 0.08 bar ≤ 4 bar, ± 0.16 bar > 4 to ≤ 10)
Operating temperature	-10° → +40°C 14° → 104°F
Storage temperature	-40° → +70°C -40° → 158°F
Ingress Protection	IP65
Battery	CR2032, 3V (1pc)
Thread	G 1/4" BSPT internal (Europe) / 1/4" NPT (US)
Max supply pressure	10 bar (145 psi)
Tyre connector	QT Connector™ works with Schrader valves. Airtight connection

EC Declaration of Conformity



This declaration of conformity is issued under the sole responsibility of JWL A/S. The product satisfies the provision for CE-marking according to the following directive(s):

RoHS Directive 2011/65/EC	on the restriction of the use of certain hazardous substances in electrical and electronic equipment.
WEEE Directive 2012/19/EC	on waste electrical and electronic equipment (WEEE).
EMC Directive 2014/30/EC	relating to electromagnetic compatibility.
GPSD Directive 2001/95/EC	on general product safety.

The product is in concordance with the following harmonised European standard:
DS/EN 12645:2014 Tyre pressure measuring instruments. Devices for inspection of pressure and/or inflation / deflation of tyres for motor vehicles. Metrology, requirements and testing.

This product is type approved and accredited by the danish institute Force Technology, Certification N° 122-30994-A1, dated 20/02/2023

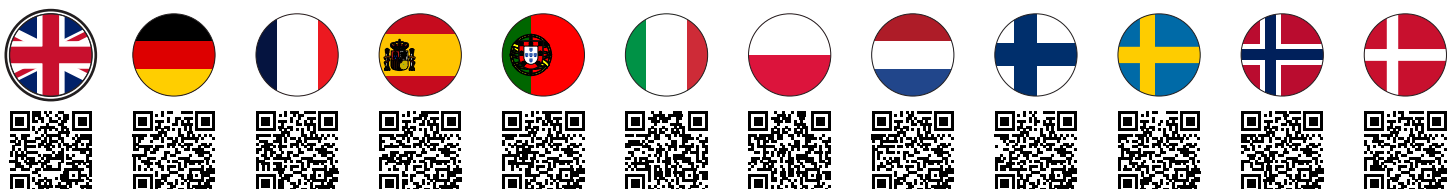
Hedensted, 12/02/2023
Winnie Johansen
CEO, JWL A/S

Warnings



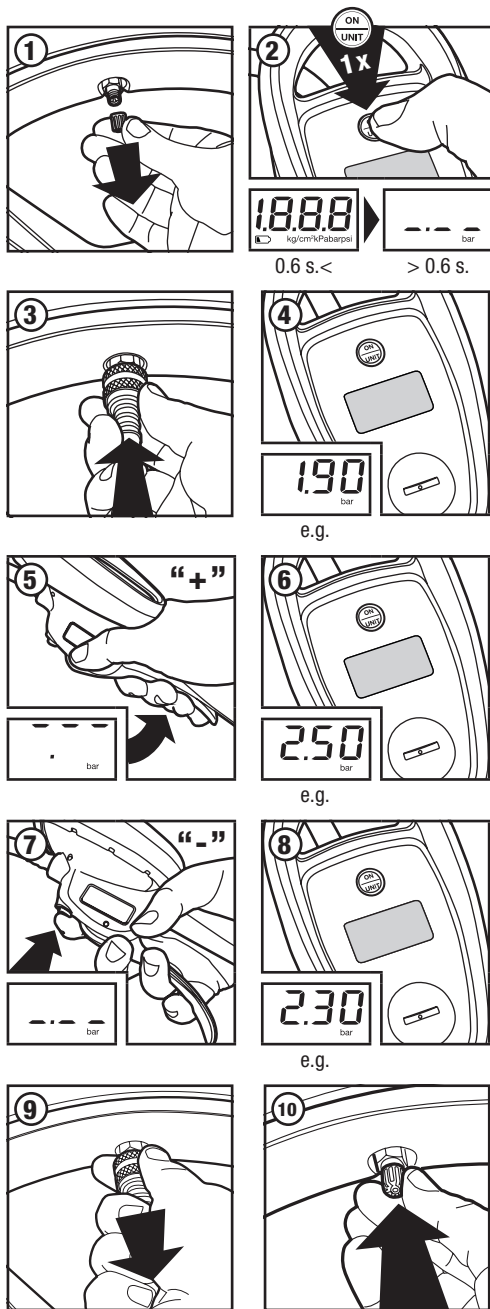
- Read instructions first
- The digital inflator "AirBoy eXact" is only intended for use at measuring, inflation and deflation of vehicle tyres with air. Any other use of this product is considered improper.
- Use compressed, filtered, deoiled air.
- Connect the inflator to a supply pressure higher than the recommend tyre pressure. A lower pressure can result in deflation of the tyre. Do not exceed the inflators maximum pressure rating.
- When inflating avoid filling too long because the tyre pressure is not shown during filling. Best practice short fill intervals followed by pressure reading.
- The pressure value may fluctuate for a few seconds after inflation/deflation and will then stabilize due to a natural thermodynamic phenomenon.
- Do not lock the trigger in inflation position unattended - risk of explosion!
- Do not inflate tyres filled with water for ballast, anti-puncture products or anti-corrosive agents.
- Keep safe distance from tyre during inflation. Stand outside the trajectory of any potential explosion.
- Adjust the tyre pressure according to the tyre and vehicle manufacturer's recommendations.
- Weather, temperature, altitude, and heat friction (from driving) affects the tyre pressure. A rule of thumb is that an increase of 10°C in ambient temperature will increase the tyre pressure by 0.1 bar. For maximum accuracy carry out the inflation in the temperature range 15° to 25°C (59° to 77°F).
- The device recalibrates automatic to zero when connected to atmospheric pressure at shutdown to improve accuracy. Carry out an initial inflation sequence and let the device shutdown if the device has changed environment (location/temperature/altitude) or not has been used for a long period. When calibrating, the device must not be connected to a pressure source (e.g. tyre). If so "Er.C" is written in display upon shutdown.
- Children are not allowed to operate this device.
- Do not direct air at yourself or bystanders.
Wear safety shield & hearing protection (users and bystanders).
- Do not inflate when not connected to a tyre. The hose can be tossed uncontrollably around.
- Do not drop the device. It may influence the functionality and the calibrated accuracy.
- Warranty not applicable for devices that have been used improper, taken apart, modified or with missing or broken parts or with traces of internal clogging caused by anti-puncture products, anti-corrosive fluids or ballast-water. Must only be repaired by authorized personnel. Do not break the seals to maintain warranty and calibration.
- This product contains a button battery when put into use. If swallowed, a lithium button battery can cause severe or fatal injuries within 2 hours. Keep batteries out of reach of children. If you think batteries may have been swallowed or placed inside any part of the body, seek immediate medical attention.

For User Guide in other languages: www.jwl.dk/support/manuals

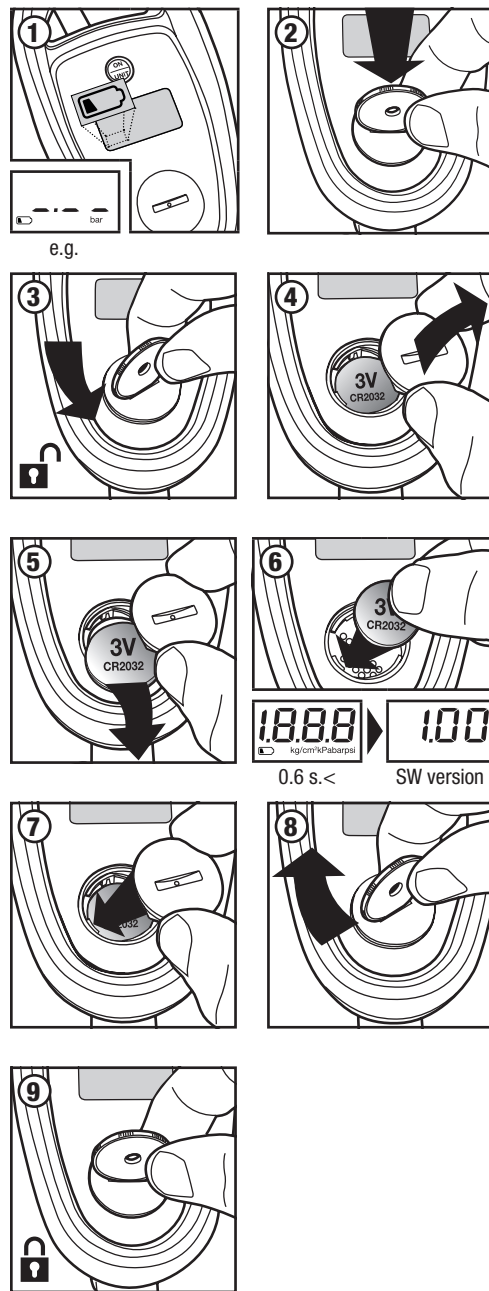


AirBoy® eXact User Guide

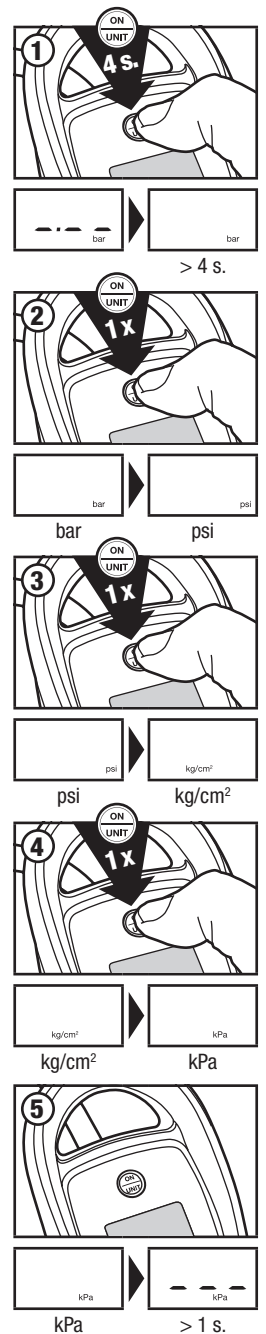
1. Measure tyre pressure



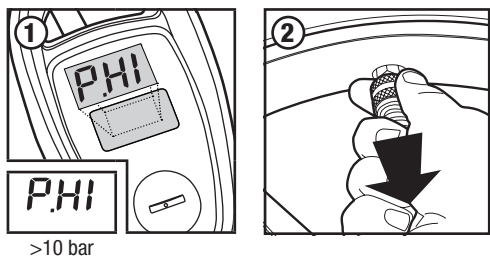
2. Change battery (1-9) / Insert Battery (2-4, 6-9)



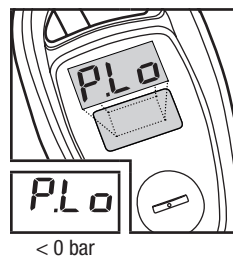
3. Change units (bar, psi, kg/cm², kPa)



4. Error - Pressure too high!

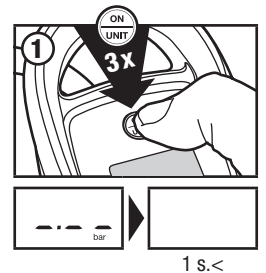


4. Error - Pressure too low!



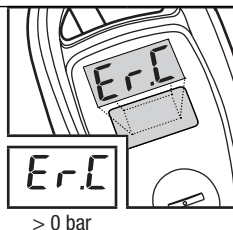
Disconnect the inflator from any pressure source (e.g. tyre) and let the inflator auto-shut-off and thereby run auto-calibration. Inflator is ready and recalibrated when turned back on.

5. Shut-off



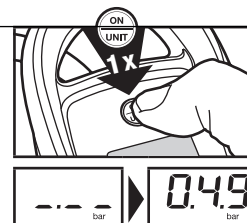
4. Error - Calibration

Recalibration cannot be done when connected to a pressure source (e.g. tyre) at shut-down.



4. Error - Display

If display "freezes" in wrong state - then press "ON" button to return to normal working condition. This can occur when inflating from flat or after a rapid series of in-/deflations.



JWL A/S
Teknikervej 4,
DK-8722 Hedensted,
Denmark
E: salg@jwl.dk, W: jwl.dk,
T: +45 7589 1699