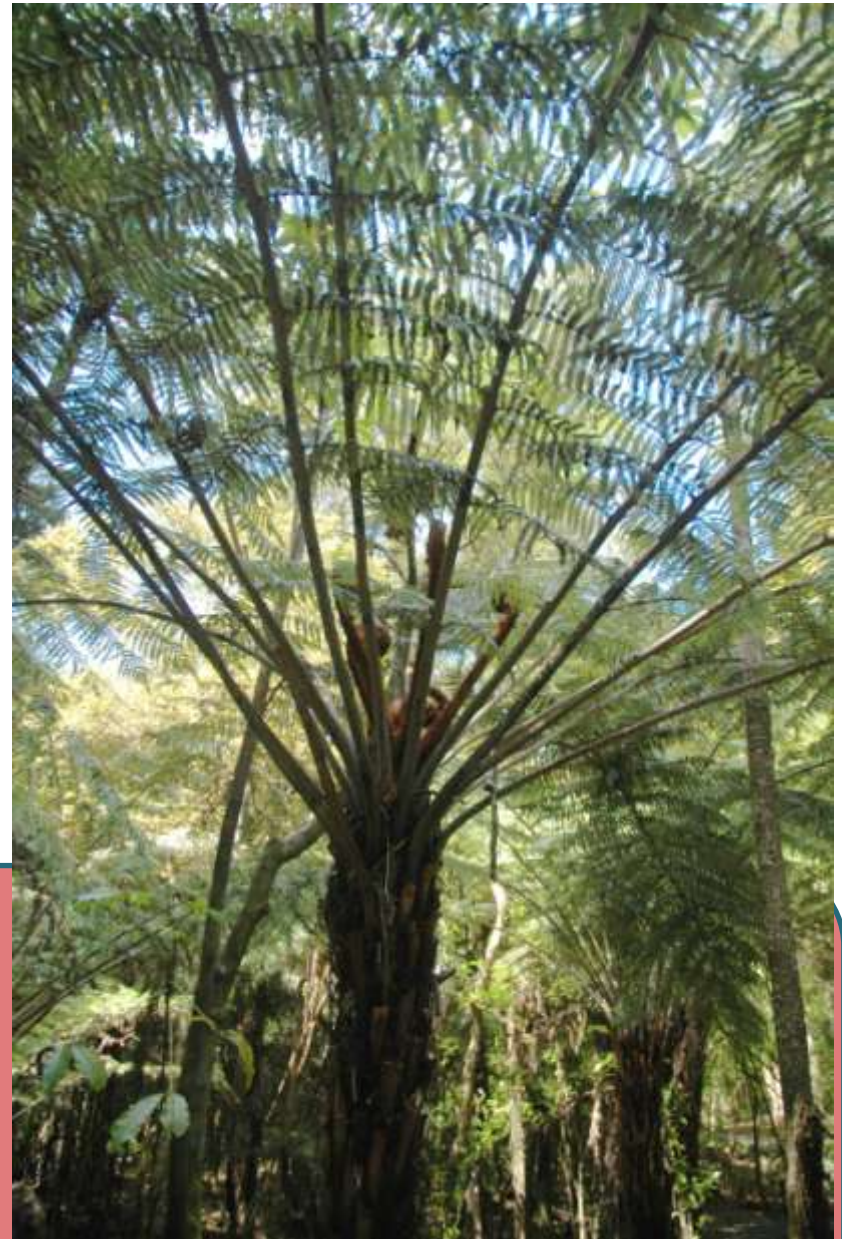


Plantas

PTERIDÓFITOS



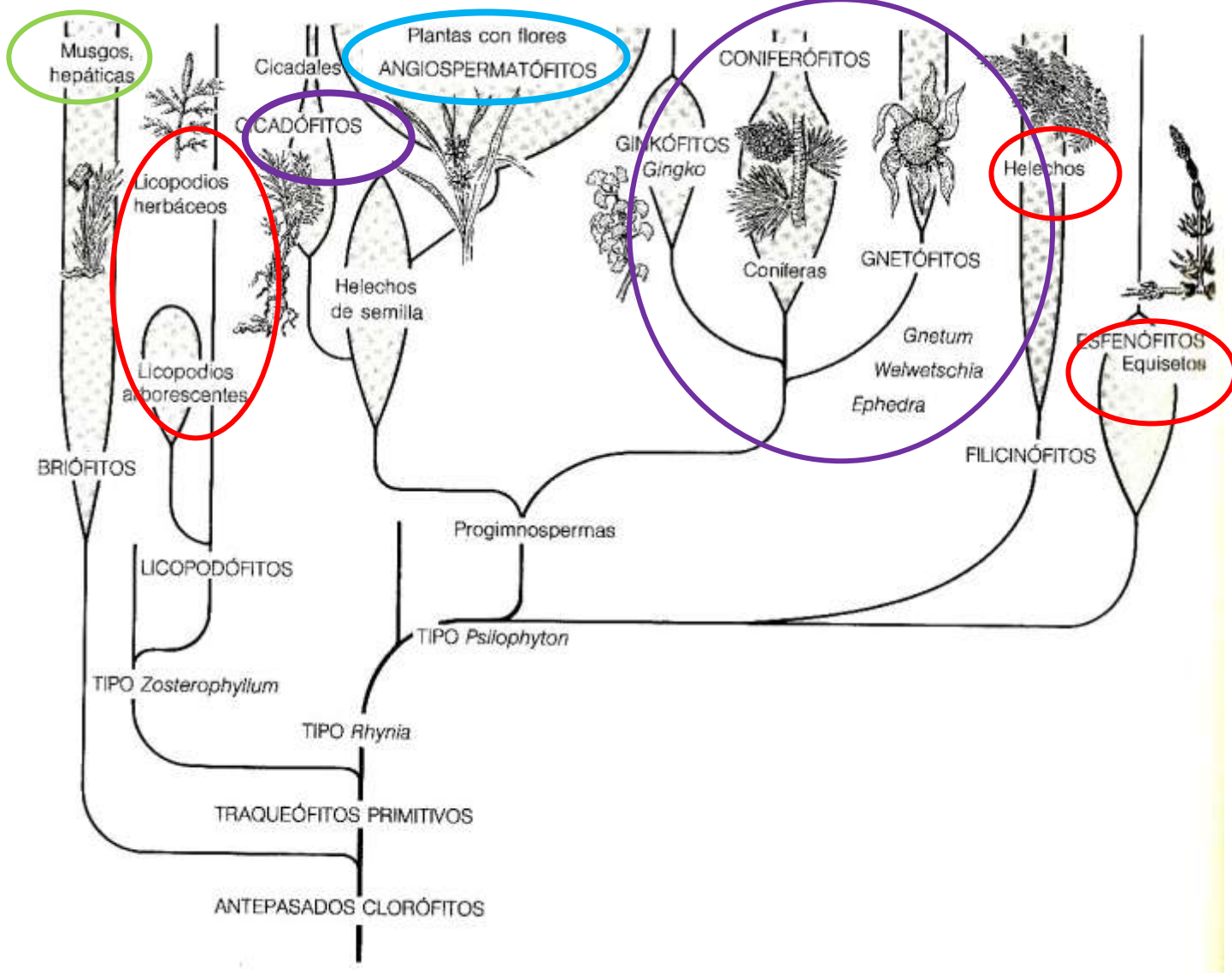
ESPERMATOFITAS

BRIOFITOS

ANGIOSPERMAS

GIMNOSPERMAS

PTERIDÓFITOS

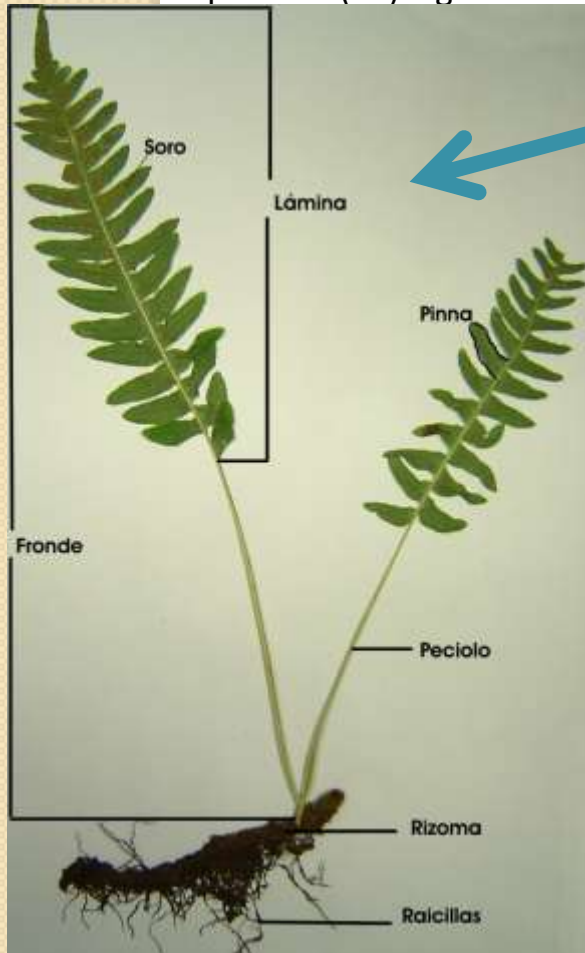


PTERIDÓFITOS

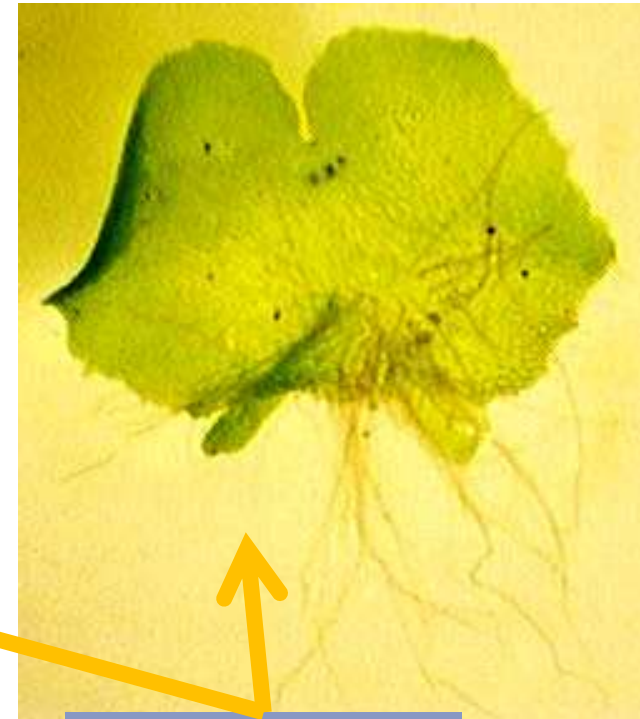
- Terrestres
- Primeras plantas vasculares (esporofito tiene tejidos vasculares: traqueidas)
- Alternancia esporofito (asexual) /gametofito (sexual)
- Estructura de cormofitos: raíz, tallo y hojas o frondes
- Esporofito (2n) > gametofito (n). Independientes

Incluyen:

- HELECHOS
- LICOPODIOS
- EQUISETOS



Esporofito (2n)



Gametofito (n)

PTERIDÓFITOS



HELECHOS



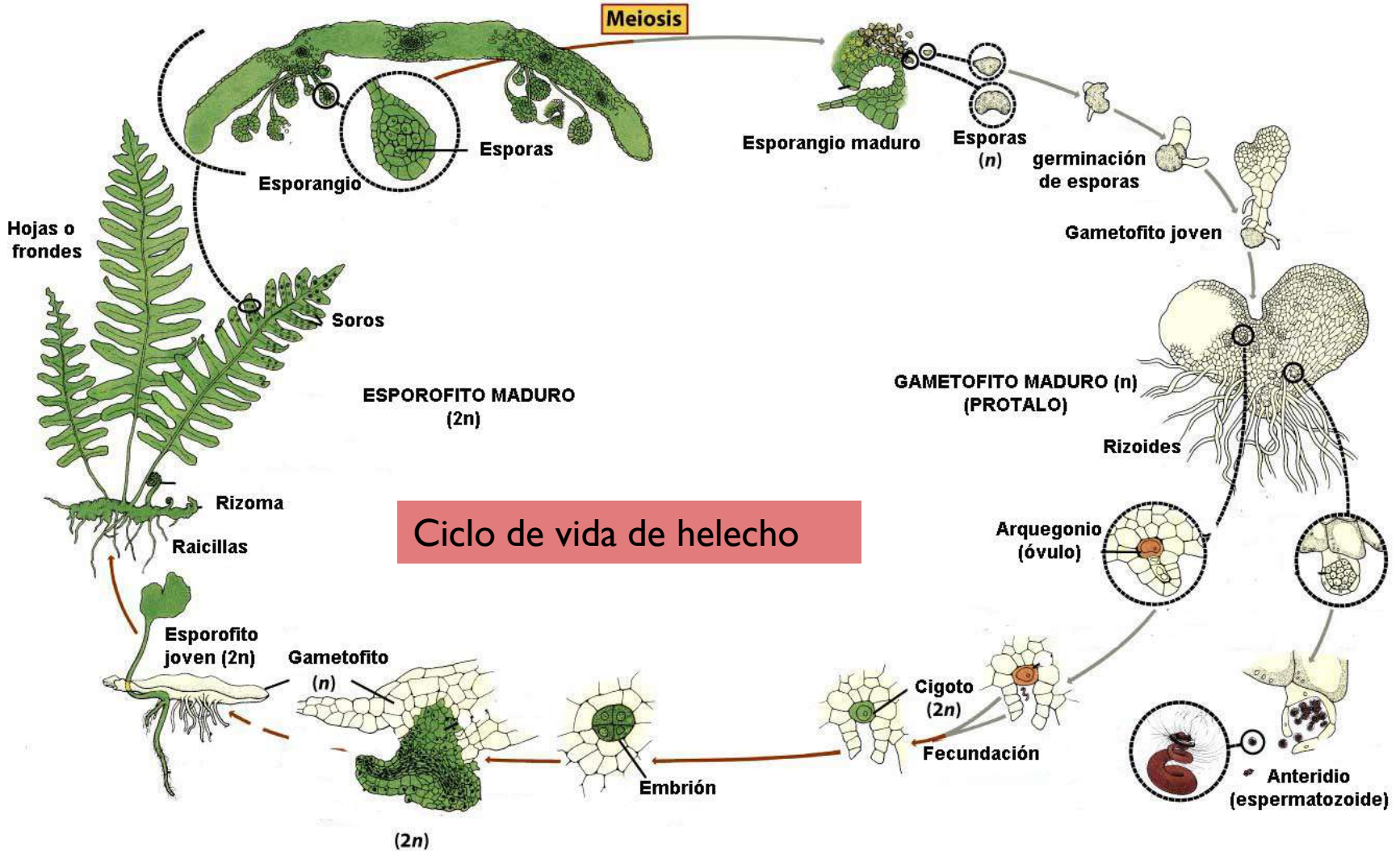
LICOPODIOS



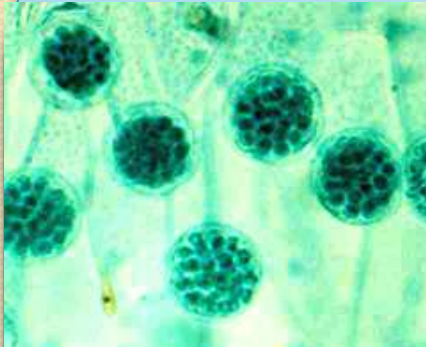
EQUISETOS

PTERIDÓFITOS

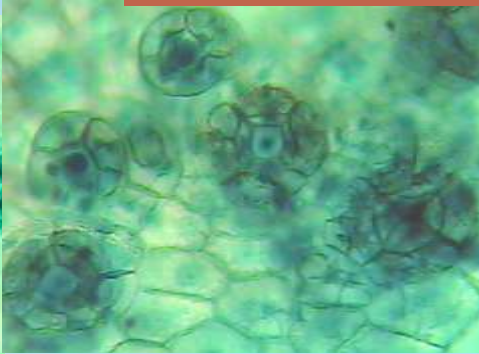
HELECHOS



PTERIDÓFITOS



Anteridios (masc.)

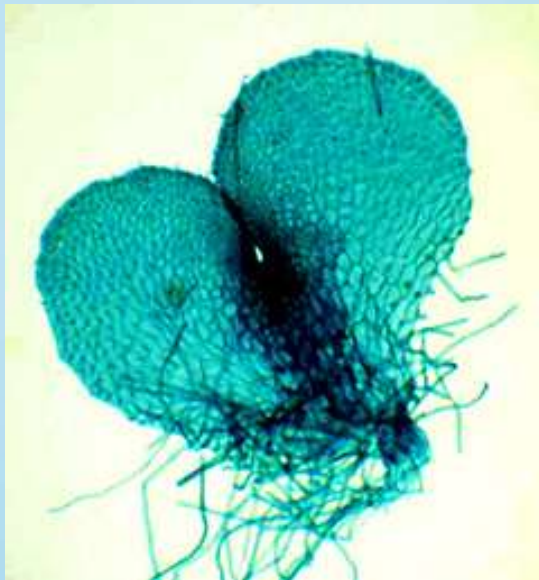


Arquegonios (fem.)

Gametangios



Esporangio con esporas



GAMETOFITO
(PROTALO)

HELECHOS



Soros

ESPOROFITO

PTERIDÓFITOS

HELECHOS



PTERIDÓFITOS

EQUISETOS

"COLAS DE CABALLO"

