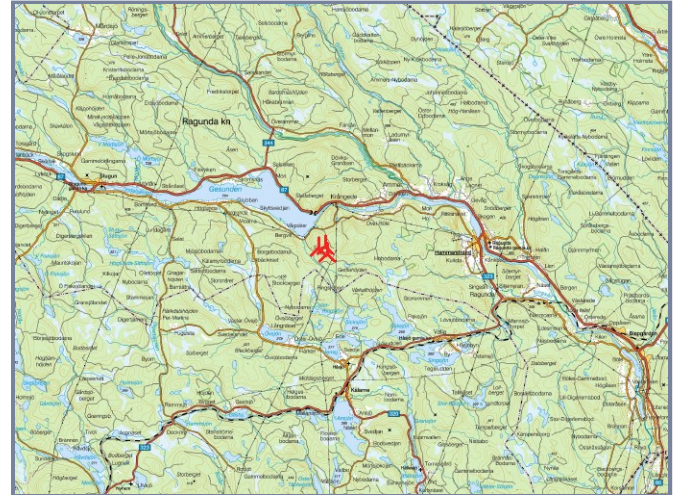
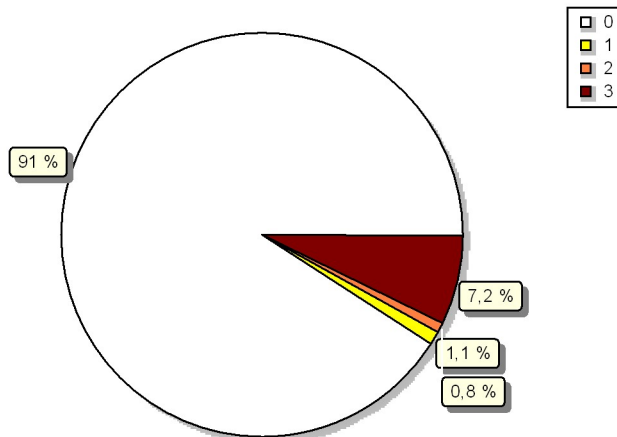




## ZVI - Standard ZVI summary

Calculation: 3st V150-5,6 totalhöjd 250m med marktäckedata\_1

Area with specific number of WTGs visible



Scale 1:750 000

▲ New WTG

### Assumptions for ZVI calculation

Center for calculation	Swedish UTM 33-SWEREF99 (SE) East: 554 745 North: 6 997 880
Width of calculation area	34 000 m
Height of calculation area	30 000 m
Calculation step	25 m
Eye height	1,5 m
Calculation area	101 006 ha
Highest relevant visible part of a WTG	Hub height + ½ rotor diameter
Obstacles used in calculation	0
DHM object	Height Contours: Hight large.wpo (9)
Area object(s) used in calculation	Marktäckedata
Height of background area type	0,00 m
New WTGs used in calculation	3
Existing WTGs used in calculation	0

No maximum distance to WTG

### ZVI Results

WTGs visible	Area [ha]	Area [%]
0	91 894	91,0
1	1 067	1,1
2	783	0,8
3	7 263	7,2

### WTGs

Valid	Manufact.	Type-generator	Power, rated [kW]	Rotor diameter [m]	Hub height [m]	Easting	Northing	Z [m]
1 Yes	VESTAS	V150-5.6-5 600	5 600	150,0	175,0	552 455	6 998 074	422,3
2 Yes	VESTAS	V150-5.6-5 600	5 600	150,0	175,0	553 102	6 998 314	418,8
3 Yes	VESTAS	V150-5.6-5 600	5 600	150,0	175,0	553 311	6 997 492	476,2

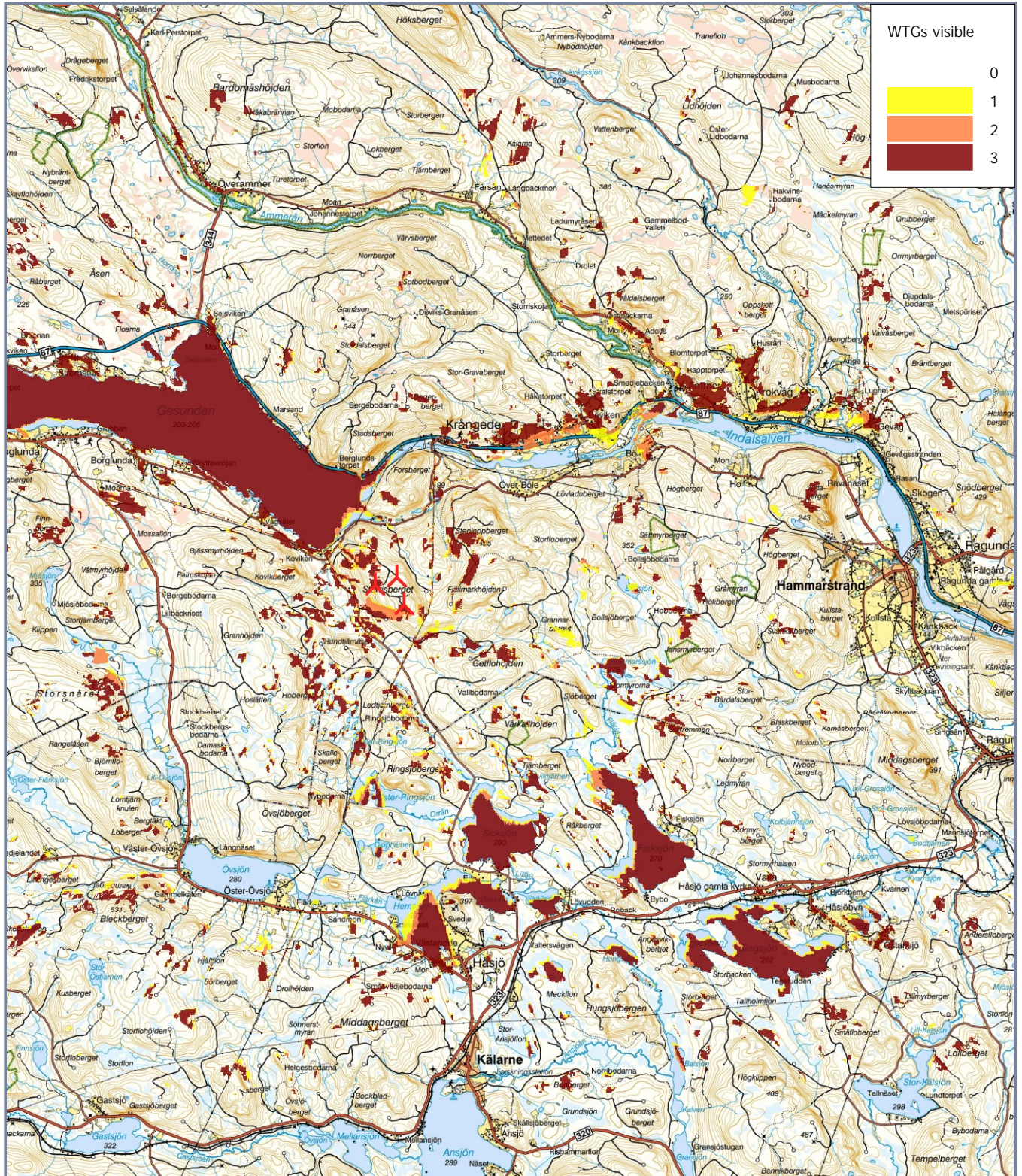
Project:  
Storrisberget

Licensed user:  
Wind Sweden AB  
Batterivägen 2  
SE-311 39 Falkenberg  
+46 723 158788  
Wind-Sweden  
Calculated:  
2021-03-11 14:57/3.4.415

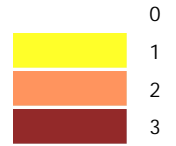


## ZVI - Map Standard ZVI summary

Calculation: 3st V150-5,6 totalhöjd 250m med marktäckedata\_1



WTGs visible



0 2,5 5 7,5 10km

Map: Vägkarta old , Print scale 1:170 000, Map center Swedish UTM 33-SWREF99 (SE) East: 556 500 North: 6 997 880

▲ New WTG