

Project:  
Storrisberget

Licensed user:  
Wind Sweden AB  
Åtrastigen 5A  
SE-311 38 Falkenberg  
+46 723 158788  
Wind-Sweden  
Calculated:  
2020-10-22 14:28/3.4.405



## DECIBEL - Main Result

Calculation: WS1.0.1 3st V150-5,6MW tot 250m

SVENSKA BESTÄMMELSER FÖR EXTERNT BULLER FRÅN LANDBASERADE VINDKRAFTVERK

Beräkningen är baserad på den av Statens Naturvårdsverk rekommenderad metod "Ljud från vindkraftverk", 2010 (NV dnr 382-6897-07 Rv)

All coordinates are in Swedish UTM 33-SWREF99 (SE)



Scale 1:250 000

New WTG

Noise sensitive area

### WTGs

Easting	Northing	Z [m]	Row data/Description	WTG type			Power, rated [kW]	Rotor diameter [m]	Hub height [m]	Noise data		Wind speed [m/s]	Status	LwA,ref [dB(A)]	Pure tones
				Valid	Manufact.	Type-generator				Creator	Name				
1 552 455	6 998 074	422,3	S1	Yes	VESTAS	V150-5.6-5 600	5 600	150,0	175,0	USER	Level 0 - Measured - Mode 0 - 01-2019	8,0	From other hub height	104,9	No f
2 553 102	6 998 314	418,4	S2	Yes	VESTAS	V150-5.6-5 600	5 600	150,0	175,0	USER	Level 0 - Measured - Mode 0 - 01-2019	8,0	From other hub height	104,9	No f
3 553 311	6 997 492	476,1	S3	Yes	VESTAS	V150-5.6-5 600	5 600	150,0	175,0	USER	Level 0 - Measured - Mode 0 - 01-2019	8,0	From other hub height	104,9	No f

f) From other hub height

### Calculation Results

#### Sound level

Noise sensitive area				Demands			Sound level			Demands fulfilled ?		
No.	Name	Easting	Northing	Z [m]	Immission height [m]	Noise [dB(A)]	Distance [m]	From WTGs [dB(A)]	Distance to noise demand [m]	Noise	Distance	All
A	58	552 739	7 000 182	212,4	1,5	40,0	1000	29,3	1 366	Yes	Yes	Yes
B	59	552 654	7 000 081	205,0	1,5	40,0	1000	29,8	1 279	Yes	Yes	Yes
C	2	550 965	6 998 797	212,0	1,5	40,0	1000	30,0	1 149	Yes	Yes	Yes
D	33	552 619	7 000 198	207,9	1,5	40,0	1000	29,2	1 401	Yes	Yes	Yes
E	35	552 610	6 999 996	206,7	1,5	40,0	1000	30,2	1 204	Yes	Yes	Yes
F	36	552 341	7 000 121	208,4	1,5	40,0	1000	29,3	1 397	Yes	Yes	Yes
G	37	552 377	7 000 145	205,0	1,5	40,0	1000	29,2	1 409	Yes	Yes	Yes
H	38	552 420	7 000 225	212,3	1,5	40,0	1000	28,9	1 473	Yes	Yes	Yes
I	39	552 390	7 000 232	212,1	1,5	40,0	1000	28,8	1 487	Yes	Yes	Yes
J	40	550 004	6 999 706	205,0	1,5	40,0	1000	24,4	2 427	Yes	Yes	Yes
K	41	550 015	6 999 691	205,0	1,5	40,0	1000	24,5	2 410	Yes	Yes	Yes
L	42	550 032	6 999 671	205,0	1,5	40,0	1000	24,6	2 385	Yes	Yes	Yes
M	43	550 291	6 999 448	205,0	1,5	40,0	1000	25,8	2 048	Yes	Yes	Yes
N	44	550 030	6 999 293	218,9	1,5	40,0	1000	25,2	2 206	Yes	Yes	Yes
O	46	550 072	6 999 261	219,7	1,5	40,0	1000	25,4	2 154	Yes	Yes	Yes
P	47	550 096	6 999 251	218,9	1,5	40,0	1000	25,5	2 128	Yes	Yes	Yes
Q	48	550 526	6 999 263	205,0	1,5	40,0	1000	27,1	1 752	Yes	Yes	Yes
R	49	550 539	6 999 131	215,0	1,5	40,0	1000	27,4	1 677	Yes	Yes	Yes
S	50	550 547	6 999 106	215,0	1,5	40,0	1000	27,5	1 659	Yes	Yes	Yes
T	51	550 376	6 999 083	215,0	1,5	40,0	1000	26,8	1 804	Yes	Yes	Yes
U	52	551 065	6 999 355	205,8	1,5	40,0	1000	29,0	1 361	Yes	Yes	Yes
V	53	551 142	6 999 160	217,8	1,5	40,0	1000	29,9	1 179	Yes	Yes	Yes
W	54	551 379	6 999 724	205,0	1,5	40,0	1000	28,8	1 435	Yes	Yes	Yes

Project:

Storrisberget

Licensed user:

Wind Sweden AB  
Åtrastigen 5A  
SE-311 38 Falkenberg  
+46 723 158788

Wind-Sweden

Calculated:

2020-10-22 14:28/3.4.405



## DECIBEL - Main Result

Calculation: WS1.0.1 3st V150-5,6MW tot 250m

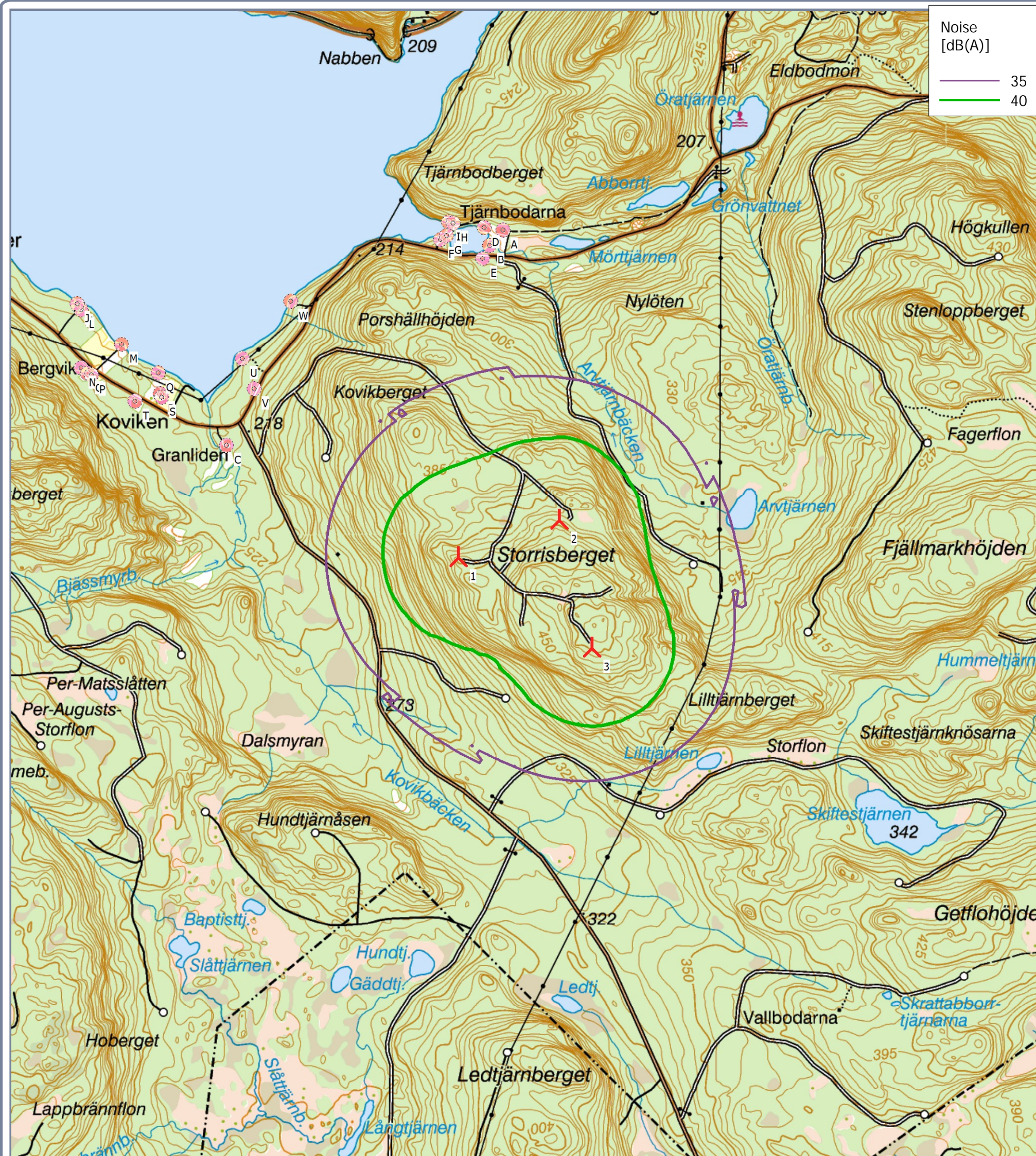
### Distances (m)

NSA	WTG		
	1	2	3
A	2127	1903	2750
B	2017	1823	2671
C	1656	2191	2685
D	2130	1945	2793
E	1928	1753	2600
F	2050	1960	2802
G	2072	1969	2812
H	2152	2029	2875
I	2159	2045	2890
J	2944	3396	3980
K	2927	3380	3962
L	2902	3356	3937
M	2563	3031	3598
N	2714	3224	3743
O	2662	3174	3690
P	2636	3148	3664
Q	2266	2745	3300
R	2188	2689	3220
S	2169	2674	3200
T	2311	2832	3338
U	1890	2288	2918
V	1704	2135	2736
W	1970	2227	2952



## DECIBEL - Map 8,0 m/s

Calculation: WS1.0.1 3st V150-5,6MW tot 250m



0 250 500 750 1000m

Map: Terräng stor, Print scale 1:25 000, Map center Swedish UTM 33-SWREF99 (SE) East: 552 883 North: 6 997 903

New WTG

Noise sensitive area

Noise calculation model: Swedish 2009. Wind speed: 8,0 m/s  
Height above sea level from active line object