

User Manual

SERVICE / UPGRADES

Any Service or additional Upgrades must be handled by IWCS

Do not try to open or modify the IWCS product

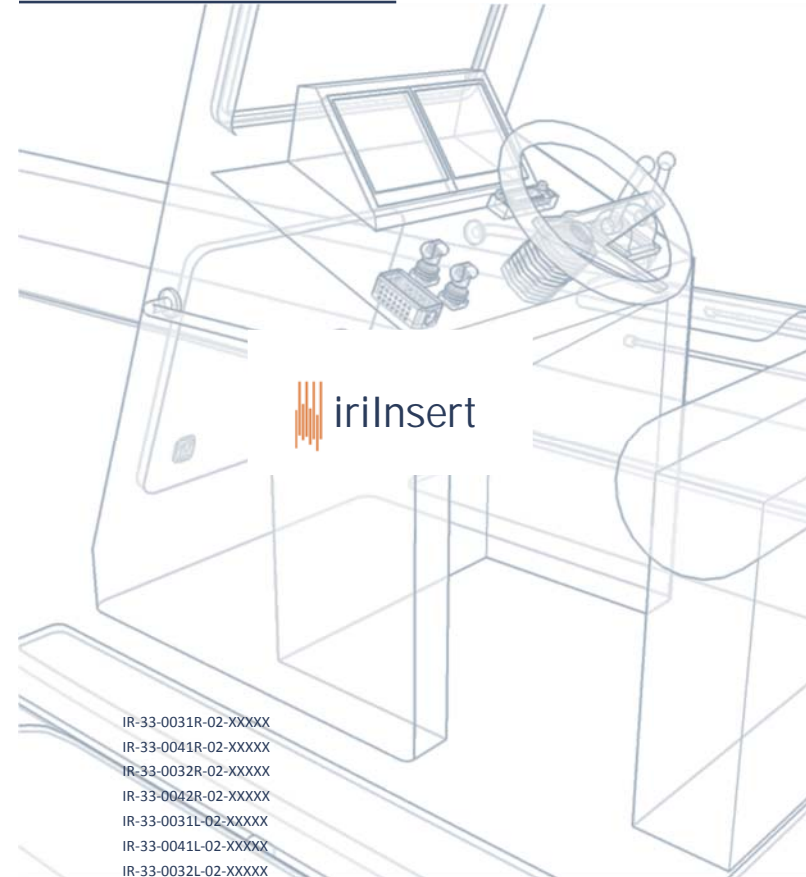
Call our Hot-Line at +45 43 43 26 26 or send us an email at support@iwcs.eu

IRIDIUM WATERPROOF COMMUNICATION SYSTEMS APS

PORTHUSVEJ 7A - 3490 KVISTGAARD - DENMARK
+45 43 43 26 26 - WWW.IWCS.EU - INFO@IWCS.EU



12



IR-33-0031R-02-XXXXX
IR-33-0041R-02-XXXXX
IR-33-0032R-02-XXXXX
IR-33-0042R-02-XXXXX
IR-33-0031L-02-XXXXX
IR-33-0041L-02-XXXXX
IR-33-0032L-02-XXXXX
IR-33-0042L-02-XXXXX

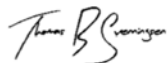
IRIDIUM WATERPROOF COMMUNICATION SYSTEMS APS



**CONGRATULATIONS ON YOUR NEW PRODUCT FROM
IRIDIUM WATERPROOF COMMUNICATION SYSTEMS**

iri-Insert

*IWCS HOPE YOU WILL ENJOY THE BENEFITS OF
TROUBLE FREE HIGH QUALITY INTERCOM. PLEASE
READ THESE INSTRUCTIONS CAREFULLY BEFORE
FIRST USE. IF INSTALLED, OPERATED AND MAIN-
TAINED ACCORDING TO THIS MANUAL, IRI-INSERT
WILL BE A RELIABLE PARTNER IN MANY YEARS TO
COME.*



THOMAS B SVENNINGSSEN
CO-FOUNDER OF IWCS



4.2 SPECIFICATIONS

Specifications	iriInsert
Model	IR-33-00XXX-02-XXXXX
Diameter	50 mm
Depth	16/29 mm
Weight	106 g (Dual) - 82 g (Single) - without external lead
Enclosure material	POM
Temp. range	-20 to +65
IP Rating	IP67 (Microphone IP68)
Interface	Various
Release	March 2016

CLEANING / MAINTENANCE

Do not use chemicals or solvents to clean your iriInsert. Use only fresh water. Pressure, friction, sharp objects, etc. can damage the product and the warranty may be void.

WARRANTY

iriInsert is covered by a limited one (1) year warranty against manufacturing defects.

DECLARATION OF CONFORMITY

Refer to www.iwcs.eu/downloads/Declaration_of_Conformity_iriInsert.pdf



4.1 TROUBLESHOOT

PROBLEM	CAUSE	SOLUTION
<ul style="list-style-type: none"> • Poor or No RX 	<ul style="list-style-type: none"> • Interface cable not plugged in • Cable defective • Defective speaker 	<ul style="list-style-type: none"> • Secure correct assembly of radio connector on the radio or iriBelt • Send for repair • Send for repair
<ul style="list-style-type: none"> • Poor or No TX 	<ul style="list-style-type: none"> • Microphone blocked • Microphone damaged • Interface Cable defective 	<ul style="list-style-type: none"> • Clean microphone with fresh water and dry • Send for repair • Send for repair

For any other troubles - contact your dealer.

**DO NOT SHIP PRODUCTS FOR RMA WITHOUT
WRITTEN AGREEMENT WITH IWCS.**



CONTENT

CHAPTER 1 INTRODUCTION

1.1	Disclaimer	Page	4
1.2	Copyright	Page	4
1.3	Trademark	Page	4
1.4	Safety Warning	Page	5

CHAPTER 2 INSTALLATION

2.1	Unboxing	Page	6
2.2	Tools	Page	6
2.3	Installation	Page	7

CHAPTER 3 OPERATION

3.1	Instructions for use	Page	9
-----	----------------------	------	---

CHAPTER 4 SERVICE AND MAINTENANCE

4.1	Troubleshoot	Page	10
4.2	Specifications	Page	11

Document number: IR-UM-INS-01

Release date: January 22, 2019



1.1 DISCLAIMER

Any responsibility or liability for loss or damage in connection with the use of this product and the accompanying documentation is disclaimed by IWCS. The information in this manual is provided for information purposes only, is subject to change without notice and may contain errors or inaccuracies.

Manuals issued by IWCS are periodically revised and updated. Anyone relying on this information should acquire the most current version e.g. upon request at info@iwcs.eu

IWCS is not responsible for the content or accuracy of any translations or reproductions, in the whole or in part, of this manual from any other source.

1.2 COPYRIGHT

2019 Iridium Waterproof Communication Systems ApS. All right reserved. Printed in Denmark.

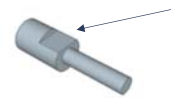
1.3 TRADEMARK ACKNOWLEDGEMENTS

irilInsert is a Trademark  by Iridium Waterproof Communication Systems ApS

3.1 INSTRUCTIONS FOR USE

MICROPHONE

Place the microphone at a distance of less than one cm in front of your mouth. The noise cancelling, directional microphone is a very sensitive component, and must be placed in the right position for optimal performance. Underneath the wind muff there is a flat surface indicating which side must point towards your mouth.



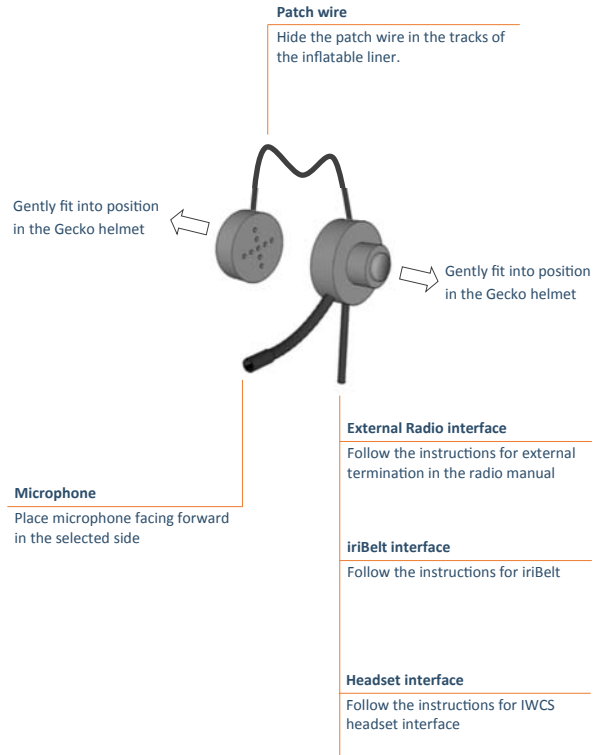
IMPORTANT :

This flat surface **MUST** point towards your mouth

PTT - ONLY ON IR-33-004XX-XXXXX versions

For remote activation of the radio PTT, press and hold the red PTT button on the irilInsert. When released the TX is discontinued.

2.3 INSTALLATION - CONTINUED



1.4 SAFETY WARNING

The following general safety precautions must be observed during all phases of operation, service and repair of this equipment. Failure to comply with these precautions or with specific warning elsewhere in this manual violates safety standards of design, manufacture and intended use of the equipment. IWCS assumes no liability for the customer's failure to comply with these requirements.

EMC / RF EXPOSURE

iriInsert is CE certified as stated in the Declaration of Conformity which is accessible on request.

FIRE

In case of fire, harmful gases and fumes may occur. One should immediately leave the area and seek help. In case of suspected smoke in the lungs, a doctor should be consulted.

WARRANTY LIMITATIONS

IMPORTANT - This unit is a sealed waterproof unit (classified IP67). To create and maintain its waterproof integrity it has been assembled in a controlled environment using special equipment. This unit is NOT a user serviceable unit, and under no circumstances should the unit be opened except by authorized personnel. Unauthorized opening of the unit will invalidate the warranty.

DISPOSAL

When disposing of iriInsert and related equipment, it must happen in accordance with applicable national law. There are no batteries inside iriInsert.



2.1 UNBOXING

The following items are included in the delivery of your new irilInsert from IWCS

- irilInsert
- Radio Interface Cable (integrated with irilInsert)
- User manual
- Windmuff kit

2.2 TOOLS

There are no tools required for the installation of irilInsert

2.3 INSTALLATION

irilInsert is installed inside Gecko Marine Safety Helmets without any use of tools.

Remove the plugs in the ear-recess of the Gecko Helmet.

Depending on irilInsert version, either Right or Left or both plugs should be removed.

IR-33-0031R-02-XXXX	Remove Right side earplug
IR-33-0041R-02-XXXX	Remove Right Side earplug
IR-33-0032R-02-XXXX	Remove Both earplugs
IR-33-0042R-02-XXXX	Remove Both earplugs
IR-33-0031L-02-XXXX	Remove Left side earplug
IR-33-0041L-02-XXXX	Remove Left Side earplug
IR-33-0032L-02-XXXX	Remove Both earplugs
IR-33-0042L-02-XXXX	Remove Both earplugs