



InComm

Feel at Home



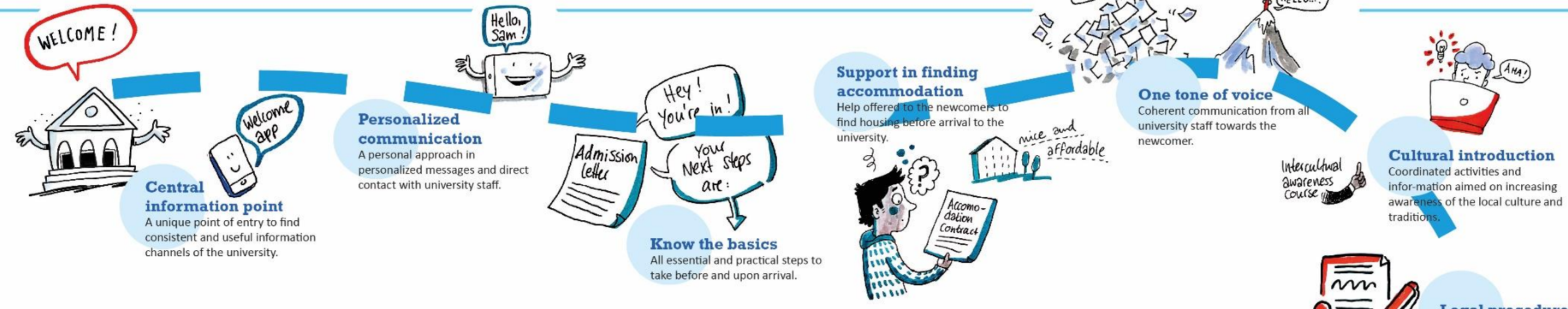
InComm Customer Journey

Feel at Home

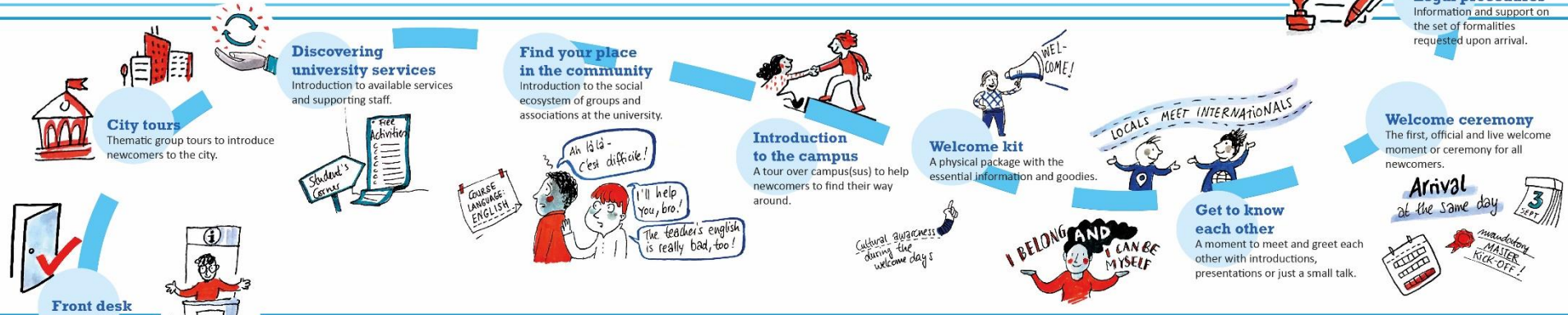
CELEBRATE OUR DIFFERENCES!

Creating an INCLUSIVE CLIMATE

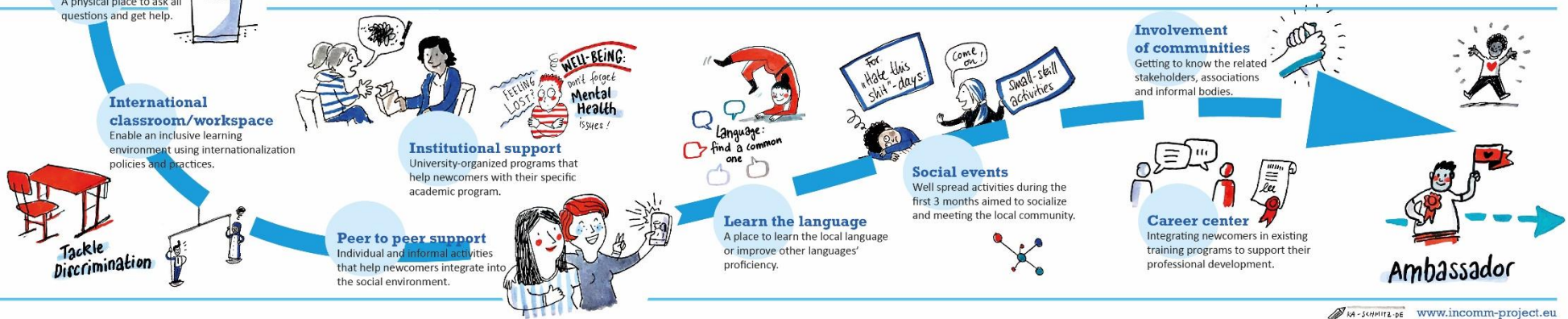
Attractiveness, Selection & Application



Intro



Onboarding



Racap!
What did you
learn yesterday?



Monday 28 November 2022

13:00 Opening Presentations

14:30 Coffee Break With a small assignment

15:00 Parallel 1: Working on it!

Exchanging best practices, building networks, getting inspired

- Application/selection by KTH and IST
- Intro programs, by TU Graz and UPC
- Onboarding, TU/e
- Working on your Customer Journey with the InComm+ Tool, by KTH and TU/e

16:30 Short Coffee Break

17:00 Measuring Impact & Wrap up

18:00 Connect with my Culture Social Networking

20:00 Dinner

Tuesday 29 November 2022

09:00 Coming in & Coffee

09:30 Kick-off

10:00 Parallel 2: Working on it!

Exchanging best practices, building networks, getting inspired

- Application/selection by KTH and IST
- Intro programs, by TU Graz and UPC
- Onboarding, by TU/e
- Working on your Customer Journey with the InComm+ Tool, by KTH and TU/e

11:30 Coffee Break

12:00 Panel Q&A with experts from all partners

→ *Extra session on the InComm+ Tool from 12.45!*

13:00 Lunch / bye bye / End of conference

Tuesday 29 November 2022

09:00 Coming in & Coffee

09:30 Kick-off

10:00 Parallel 2: Working on it!

Exchanging best practices, building networks, getting inspired

- Application/selection by KTH and IST
- Intro programs, by TU Graz and UPC
- Onboarding, by TU/e
- Working on your Customer Journey with the InComm+ Tool, by KTH and TU/e

11:30 Coffee Break

12:00 Panel Q&A with experts from all partners

→ *Extra session on the InComm+ Tool from 12.45!*

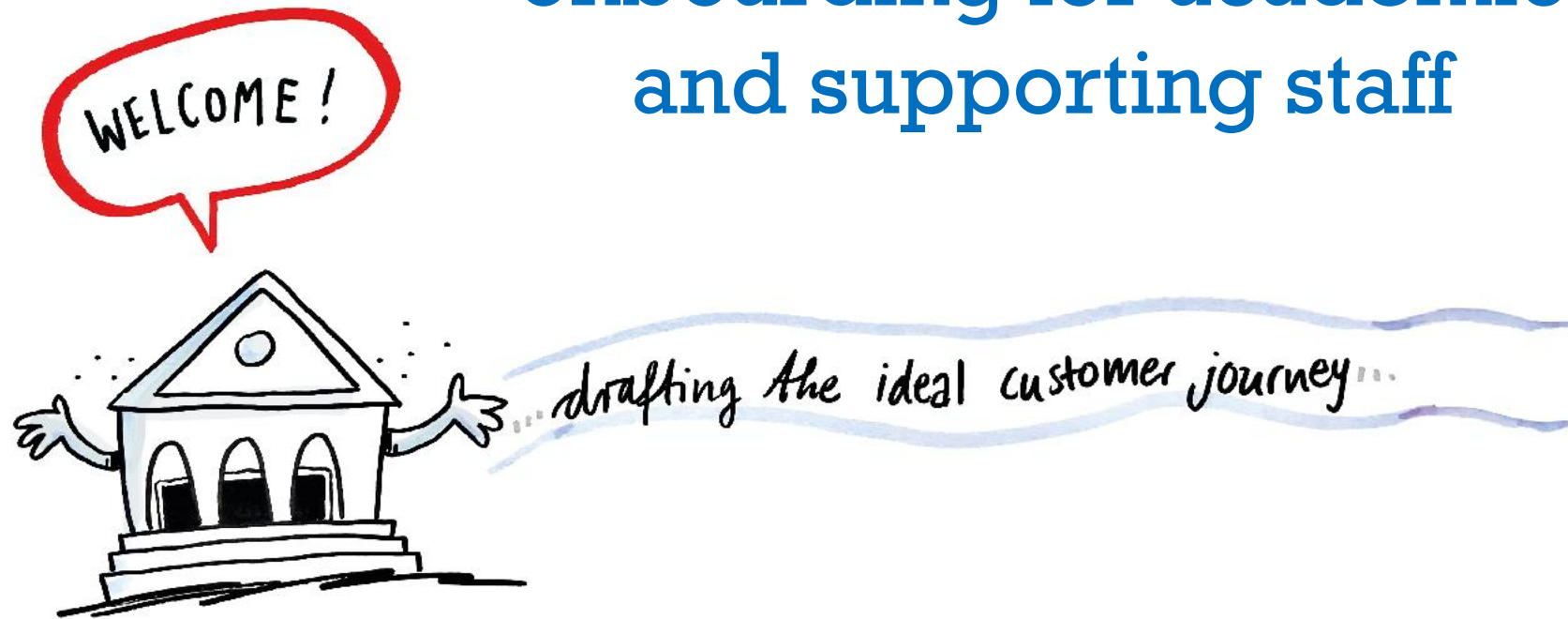
13:00 Lunch / bye bye / End of conference



**So... At 12... What will
we ask our experts?**

InComm 2.0

onboarding for academic and supporting staff





Before we go to the
sessions at 10:00
The group picture!



Thank you!

www.incomm-project.eu