

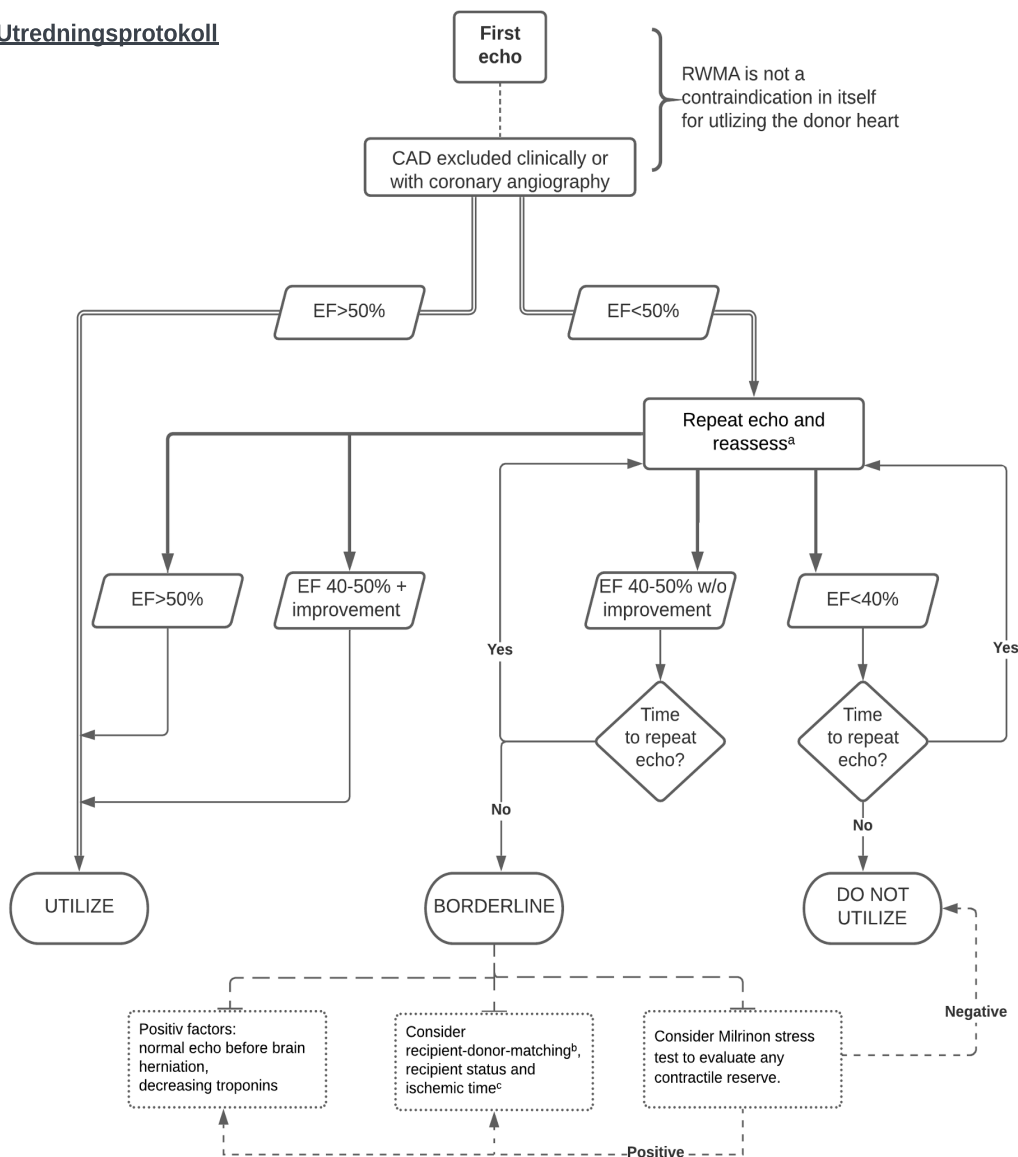
IMPROVED Heart

INKLUSIONSKRITERIER

- Möjlig donator
- Brytpunktsbeslut fattat
- Donationsviljan är utredd som positiv
- Donatorsålder ≥ 18 år och ≤ 65 år

Donatorsprotokoll till IVA och mer information finns på improvedheart.com

Utredningsprotokoll



^a Preferably made at least six hours apart

^b -- Donor age:

- < 45 yo preferable
- 45-50 yo if ischemic time < 4 hrs
- > 55 yo only if survival benefit exceeds the decrement in early HT survival

-- Donor size:

- If body weight in donor is not $\geq 30\%$ less than recipient's, its is uniformly safe.
- If female donor, use with caution if donor body weight is $\geq 20\%$ less than male recipient donor weight ¹

-- Donor comorbidities and cause of death

^c Ischemic time should be ≤ 4 hrs. If greater other factors in donor and recipient should be ideal ¹

CAD: Coronary artery disease, EF: Ejection Fraction, RWMA: Regional Wall Motion Abnormalities.

¹ The International Society of Heart and Lung Transplantation
Guidelines for the care of heart transplant recipients J Heart Lung Transplant 2010;29:914 -956