



## CHORELA OUTBREAK REPORT- Zimbabwe

1 December 2023- by Tapiwa B  
Kanengoni



<https://www.icaresoishareintl.com/donate.php>

## CALL FOR HUMANITY RESPONSE!!!



*Dr Pastor Mario*

'There is a sense of urgency and determination as we address the devastating effects of the ongoing cholera outbreaks in Zimbabwe. As of 25 November 2023, Zimbabwe's 10 provinces had recorded 9 078 suspected cholera cases 53 confirmed deaths and 156 suspected deaths according to official figures

### 22 November 2023 Harare Statistics

- Suspected cases 8 590
- Confirmed cases 1 304
- Hospitalized 141
- Deaths 53

Due to high rate of transmission this disease is now affecting people across multiple geographical areas .Communities have demonstrated a lack of knowledge regarding preventive alternatives for the disease and how to support affected individuals with oral rehydration therapy, resulting in generalized stigmatization of those affected. Some groups, especially in parts of Harare are the most at- risk communities due to poor hygiene practices, religious practices, and low levels of knowledge and awareness. Cholera, a water- borne disease caused by contaminated food or water often spreads quickly throughout Zimbabwe because of it is poor sanitation infrastructure and limited clean water'





## Unsafe water, poor water systems, untreated water, unhealthy living conditions promotes the spread of cholera and deaths in Zimbabwe.



1 Peter 3:8 -Finally, be ye all of one mind, having compassion one of another, love as brethren, be pitiful, be courteous:

**Tapes bringing out unsafe dirty water amid Cholera Outbreak.**

**Cholera related deaths continues in Zimbabwe amid the crisis.**



Most tapes bring out this kind of water (above caption); most of the times whenever we get council water. Undenied effects of cholera continue being witnessed. It is sad to say many of the are very young and their lives is being hardly threatened if not taken away. The unavailability of clean water in man places of Zimbabwe remain a great cause of concern.

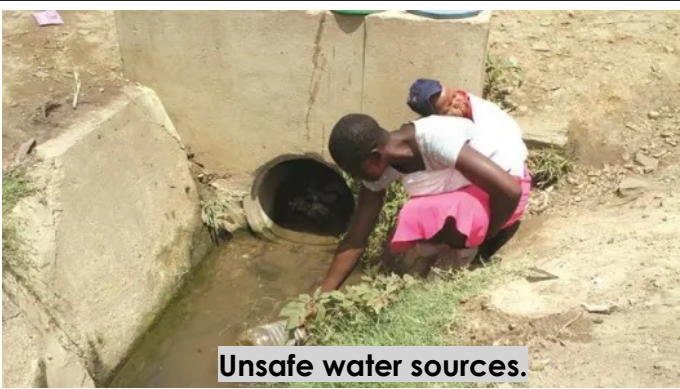
Cholera is devastating as it gives little time for recovery. It needs quick response and it is sad that some clinics and hospitals in Zimbabwe do not have enough facilities and resources to offer the much-needed services amid this crisis. Much help is offered by well-wishers who are motivated to saving lives.







On the above caption; Community fetching clean water at our House of Hope Children's Home from nearby communities



Unsafe water sources.

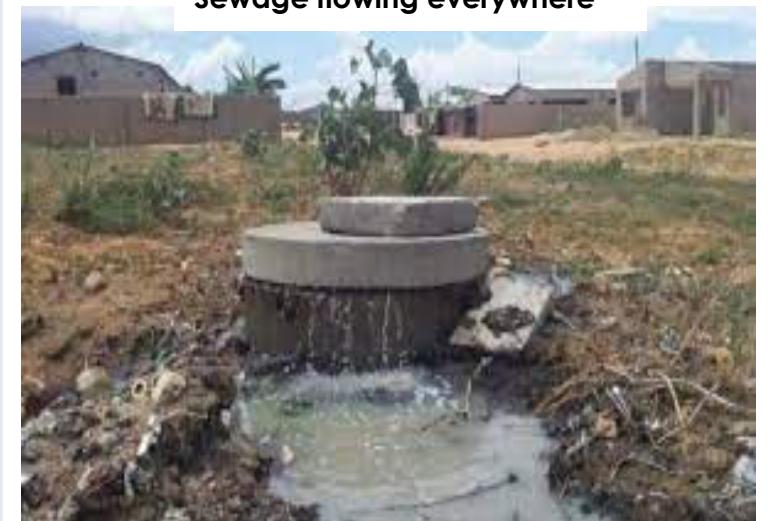


Clean water remains one of the critical to communities in Zimbabwe. People fight and scramble to access water from very few taps when provided. There are long and tiring queues that people spend almost the whole day to fetch just a little per individual. This result in people looking for unsafe and un protected water for domestic water and drinking. Whenever there are such practices, Cholera always shows up with detrimental effects.

Busted unrepaired sewage flowing everywhere is also a major cause of concern amid Cholera outbreak crisis. Sewage flowing near communities we are serving, living children under our care at risk. It is really a major cause of concern as we would need all the kids to be safe.



Sewage flowing everywhere





# IMPACT OF CHORELA IN ZIMBABWE;

**Imminent deaths.** Cholera is causing severe diarrhea and dehydration on impacted people. When they are left untreated, cholera can be fatal within hours, even in previously healthy people. Old sewage systems and water treatment have virtually negatively enhanced cholera in third world countries.

**Affects Progress;** Many children under our care are vulnerable and underprivileged. They are prone to only access unsafe water. Unsafe water is main transmitter of cholera. When they get sick, progress in school, healthy and positive perception of life is negatively impacted.

**Destabilises Homes;** A number of households are shaken by Cholera in Zimbabwe. Children are always hit the hardest. Destabilisation of children's support systems threatens their lives and impact them emotionally, physically and mentally. Emotional and mental care support is key in times like these.

**Increase number of orphans;** Other patients and victims are breadwinners and essential figures in families. When their breath is taken away it leaves a lot of children in need of support. It is always essential that families stay intact for physical, emotional and mental support.

**Mathew 25:40 ... 'Truly I tell you, whatever you did for one of the least of these brothers and sisters of mine, you did for me.'**



## PRAYER POINTS

- Protection of children and other vulnerable individuals in Zimbabwe.
- Provision of clean water in Homes, Communities and Schools.
- Healthcare workers and well-wishers responding to the great need amid Cholera outbreak.
- Mental, Physical and Emotional resilience on affected families.