

## Development of a small-scale Seaweed Twine wrapping machine for Scientific Farm Deployments

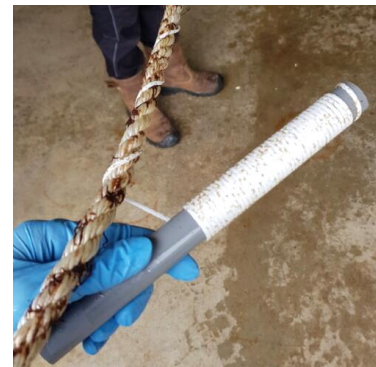
Period: 4-6 months, as soon as possible

Location: Hortimare BV, Heerhugowaard

**Has the seaweed industry caught your attention? Do you want to work in a sustainable and innovative environment? Then Hortimare is your place to be!**

### **What will you do / the assignment:**

As an intern, you will work on developing a small machine to help automate the process of attaching seeded twine from coils to a cultivation rope. You will have several challenges such as changing the coils while twisting them around a continuous rope, variable rope sizes, robustness and size of the machine and resistance to saltwater. You will work under the guidance of our scientists who will be there for support and discussions. The final product of your internship should be a prototype and ideally a successful test run.



### **What Hortimare is looking for:**

- University of applied science (HBO) (Engineering or another relevant subject)
- Affinity for building and developing
- Interest in prototyping (3D printer)
- Basic tool/ workshop experience
- Communicative and teamplayer
- Works independently and systematically
- Accurate, hands-on, and proactive



### **Our offer:**

Hortimare offers a challenging internship in a unique and passionate work environment. Our team is committed to providing a supportive and engaging environment for your internship thesis/assignment.

Travel expenses will be reimbursed, and we offer a maximum of € 650,- per month to cover accommodation costs.

### **Information:**

If you are excited about contributing to a sustainable future and joining Hortimare, please contact Jessica Schiller for more information: [jessica.schiller@hortimare.com](mailto:jessica.schiller@hortimare.com).

### **Applications :**

To apply for this position, please send your application letter together with your resumé as soon as possible to [hrm@hortimare.com](mailto:hrm@hortimare.com) for the attention of Ms. Nanouk van Eijk.

### **Why seaweed?**

Seaweed has great potential to have a positive impact on global (environmental) challenges. It is one of the fastest growing plants, and can be used for a variety of applications, such as food, packaging, and as raw material. Seaweed farming does not require added fertilizers or fresh water and can provide a much more sustainable alternative to land farming.

The demand for seaweed is increasing by about 8% per year worldwide, all the reason to cultivate it responsibly and professionally.

**Hortimare BV** is the supplier of high-quality starting material (seed) for seaweed farmers. Our mission is to contribute to a sustainable future, by making seaweed a competitive alternative for land-based products. To accomplish this we advise, support, and collaborate closely with seaweed farmers. In addition, we contribute to (international) research projects with our scientific knowledge of breeding and propagating various species of seaweed.