



Högsthus
Bygg AB



OFFICIELL REPRESENTANT FÖR NEIROHOM I SVERIGE

neirohom.es

hogsthus.se



NEIRO
002 **118 m²**



kontakt@hogsthus.se
hogsthus.se





Högsthus
Bygg AB

NEIRO
003 92 m²



kontakt@hogsthus.se
hogsthus.se



NEIRO
004 **132 m²**



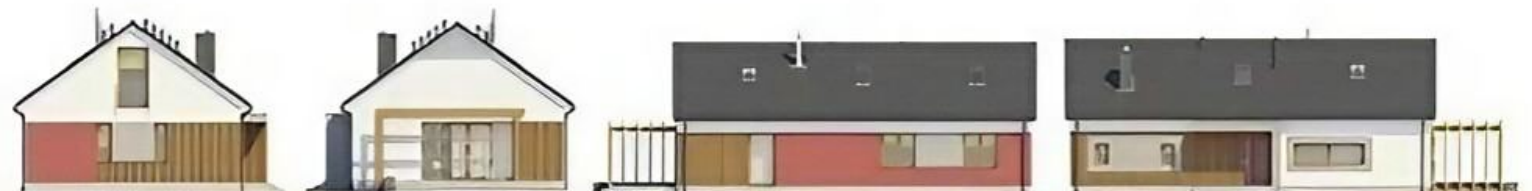
kontakt@hogsthus.se
hogsthus.se





NEIRO
005 **135 m²**

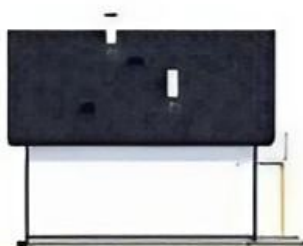
kontakt@hogsthus.se
hogsthus.se



NEIRO
006 86 m²



NEIRO
007 126 m²





Högsthus
Bygg AB

NEIRO
008 157 m²



kontakt@hogsthus.se
hogsthus.se





NEIRO
009 76 m²



kontakt@hogsthus.se
hogsthus.se



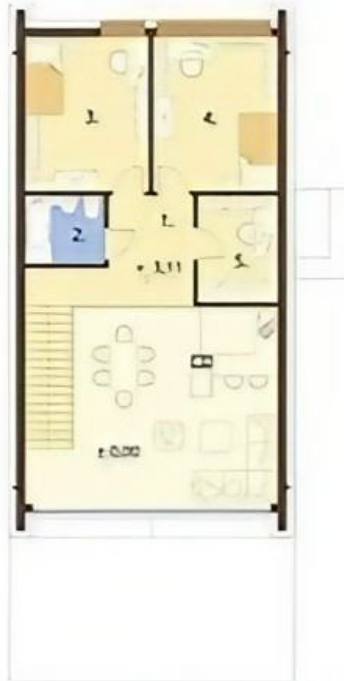


Hogsthus
Bygg AB

NEIRO
010 142 m²



kontakt@hogsthus.se
hogsthus.se





NEIRO
011 **124 m²**



kontakt@hogsthus.se
hogsthus.se





NEIRO
012 74 m²



kontakt@hogsthus.se
hogsthus.se





NEIRO
013 **118 m²**



kontakt@hogsthus.se
hogsthus.se



NEIRO
014 160 m²



kontakt@hogsthus.se
hogsthus.se





NEIRO
015 **145 m²**



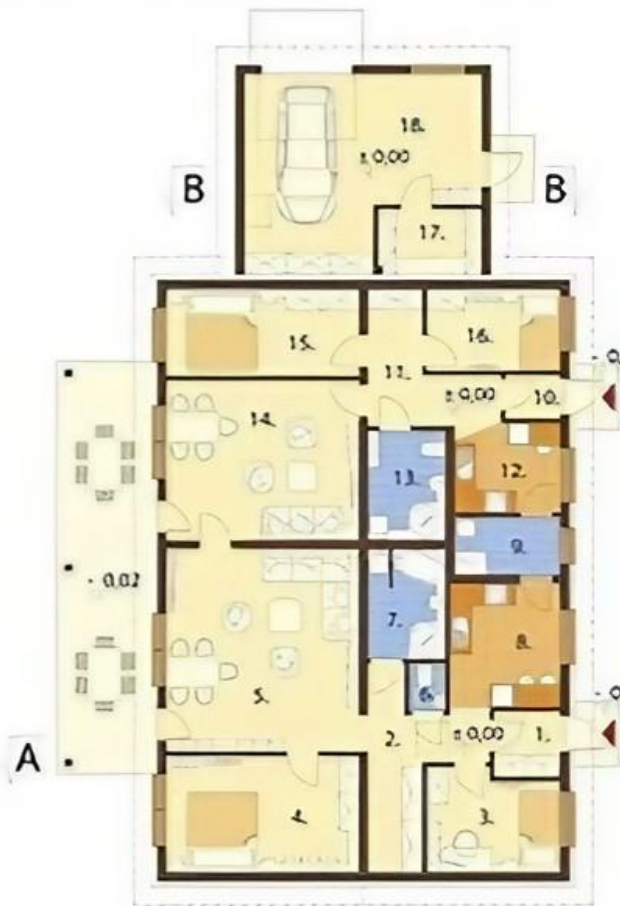
kontakt@hogsthus.se
hogsthus.se



NEIRO
016 **152 m²**



kontakt@hogsthus.se
hogsthus.se





Hogsthus
Bygg AB

NEIRO
017 144 m²

kontakt@hogsthus.se
hogsthus.se

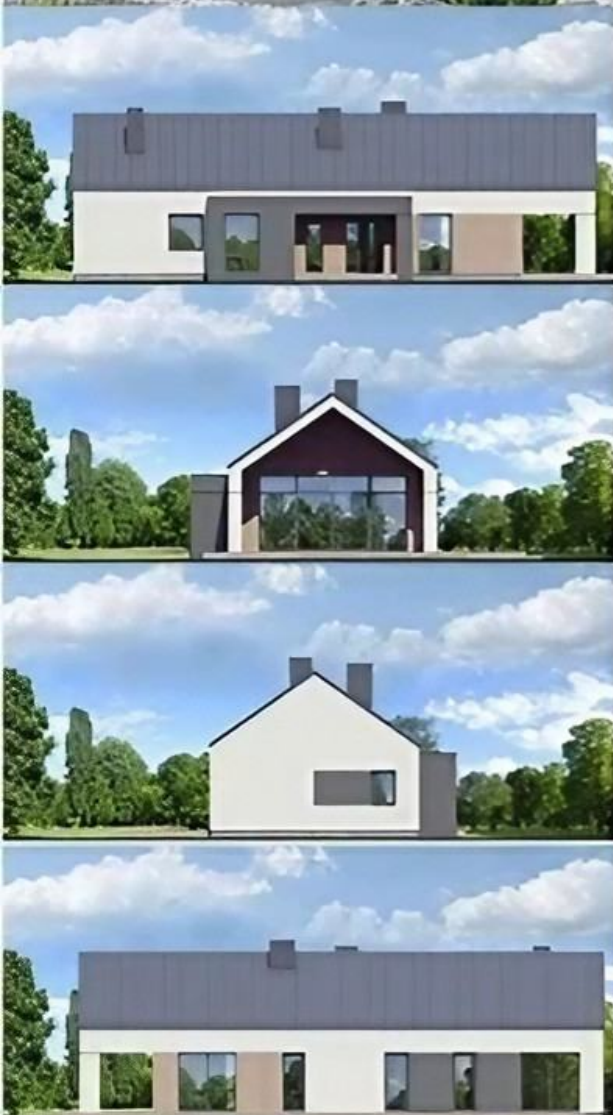




Hogsthus
Bygg AB

NEIRO
018 **122 m²**

kontakt@hogsthus.se
hogsthus.se



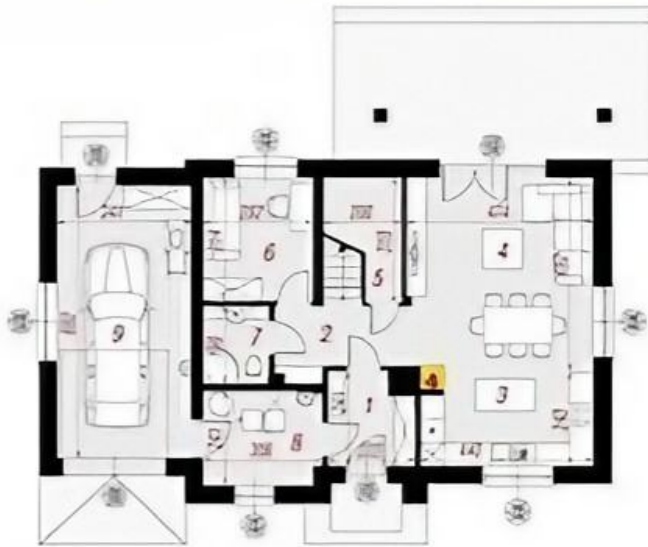


Högsthus
Bygg AB

NEIRO
019 120 m²



kontakt@hogsthus.se
hogsthus.se

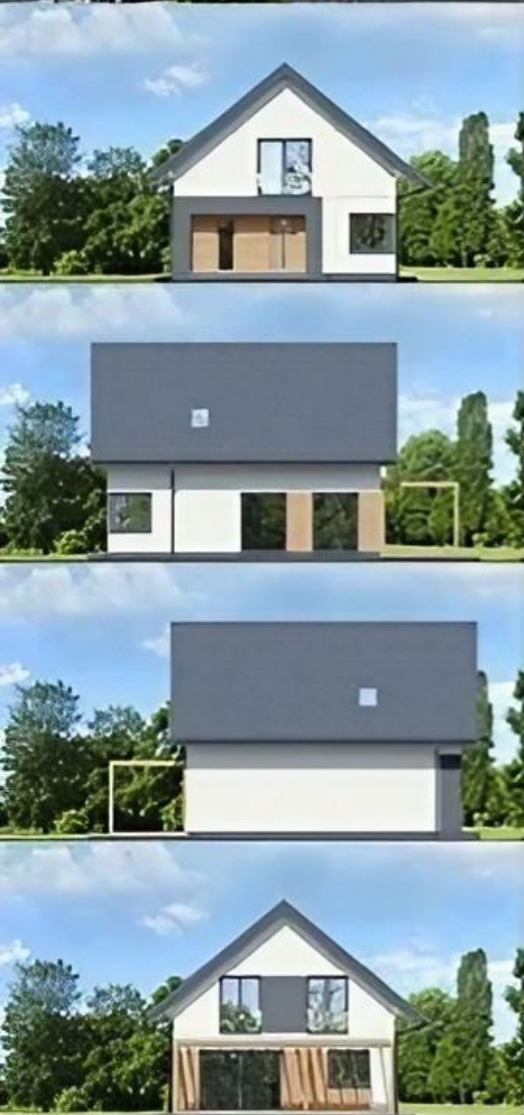




Hogsthus
Bygg AB

NEIRO
020 **114 m²**

kontakt@hogsthus.se
hogsthus.se





Hogsthus
Bygg AB

NEIRO
021 **148 m²**

kontakt@hogsthus.se
hogsthus.se

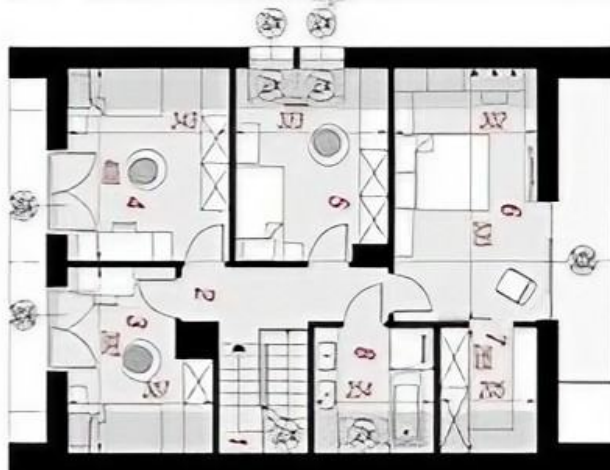




Hogsthus
Bygg AB

NEIRO
022 **146 m²**

kontakt@hogsthus.se
hogsthus.se



NEIRO
023 **93 m²**





Hogsthus
Bygg AB

NEIRO
024 **139 m²**

kontakt@hogsthus.se
hogsthus.se





Högsthus
Bygg AB

NEIRO
025 **110 m²**



kontakt@hogsthus.se
hogsthus.se





Hogsthus
Bygg AB

NEIRO
026 **119 m²**



kontakt@hogsthus.se
hogsthus.se



NEIRO
027 69 m²



kontakt@hogsthus.se
hogsthus.se





Hogsthus
Bygg AB

NEIRO
028 100 m²



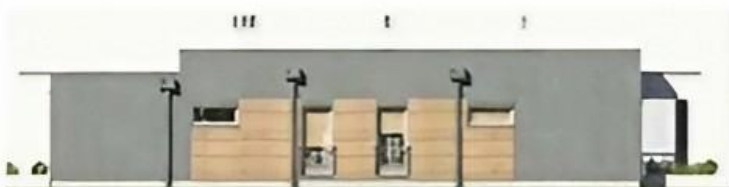
kontakt@hogsthus.se
hogsthus.se



NEIRO
029 69 m²



kontakt@hogsthus.se
hogsthus.se





One-storey residential house

Timber frame-panel construction set Thermal transmission losses through the external structures of the house (external walls, roof, windows and doors) comply with KfW Effizienzhaus 40+.

Energy efficiency U, W/m²K, max.

House area, m²

| | Thickness, mm | U, W/m ² K | Area, m ² / Number, pcs | Total |
|--|------------------|--------------------------|--|-------|
|--|------------------|--------------------------|--|-------|

Exterior walls wood decoration, paint:
ISOVAT basaltic insulation, OSB 3, beams
Exterior walls ventilated façade

Partitions: ISOVAT basalt insulation, OSB 3,
beams, plasterboard

Pitched roof:
ISOVAT basalt insulation, OSB 3, beams,
plasterboard

Windows, PVC

Facade and roof finishing materials: decorative
facade plaster, facade paint, ceramic tiles,
drainage system

Total cost

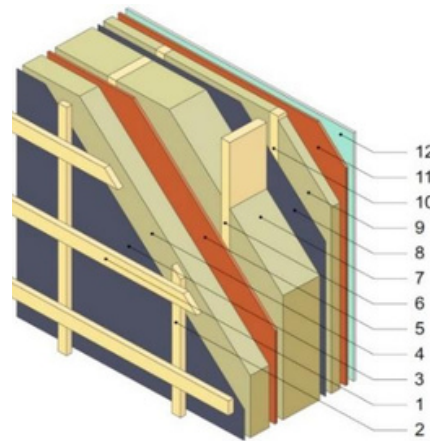
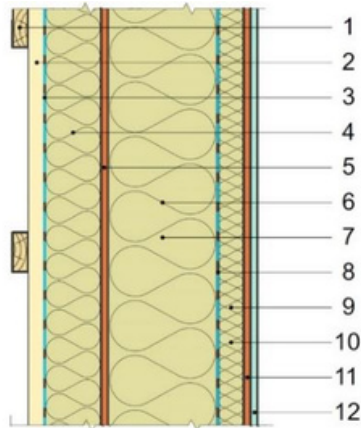
Price per m²

External walls - ventilated facade

Thickness, mm

Energy efficiency U, W/m²K

Calculation area, m²



Materials

Thickness, mm

Exterior insulation wood facades

Horizontal lath 22 x70 mm

Vertical lath 30x50mm

Super defusion membrane

OSB 3 Kronaspan 12 mm

Beam 45*145 mm C24 CE Basalt insulation material

IZOVAT, 40 kg/m³ 100 mm Basalt insulation material

IZOVAT, 40 kg/m³ 50 mm

Vapour barrier

Basalt insulation material IZOVAT, 40 kg/m³ 50 mm

Lath 45x45 mm OSB 3 12 mm

Vertical lath 22 x70 mm

Total thickness, mm

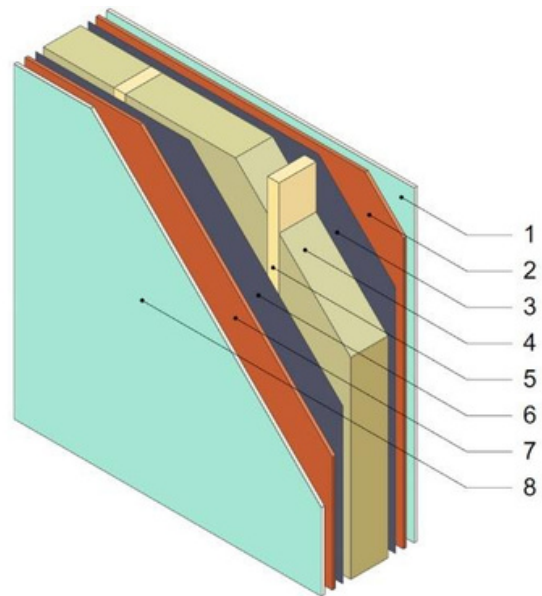
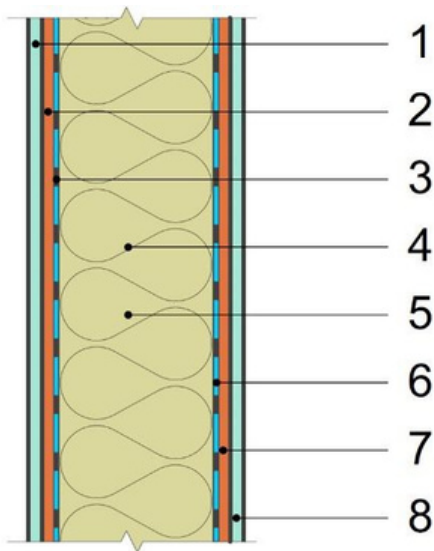
Total cost

Inner walls

Thickness, mm

Energy efficiency U, W/m²K

Calculation area, m²



| Materials | Thickness, mm |
|---|---------------|
| Vertical lath 22x70mm | |
| Vapour barrier | |
| Vapour barrier Beam 45*70 mm C24 CE | |
| Basalt insulation material IZOVAT, 40 kg/m ³ 70 mm | |
| Vapour barrier | |
| Vertical lath 22x70mm | |
| | |
| Total thickness, mm | |
| Total cost | |

Partitions

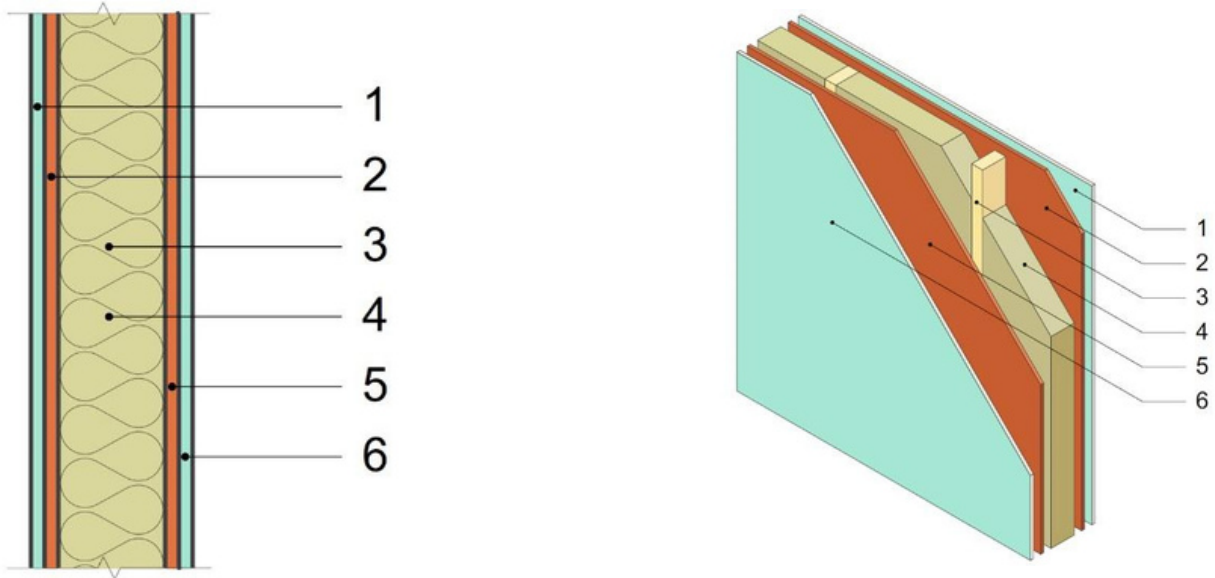
Thickness, mm

Energy efficiency index, U, W/m²K

Area, m²

Openings, m²

Calculation area, m²



Materials

Thickness, mm

Vertical lath 22x70mm

Vapour barrier

Vapour barrier Beam 45*95 mm C24 CE

Basalt insulation material IZOVAT, 40 kg/m³ 70 mm

Vapour barrier

Vertical lath 22x70mm

Total thickness, mm

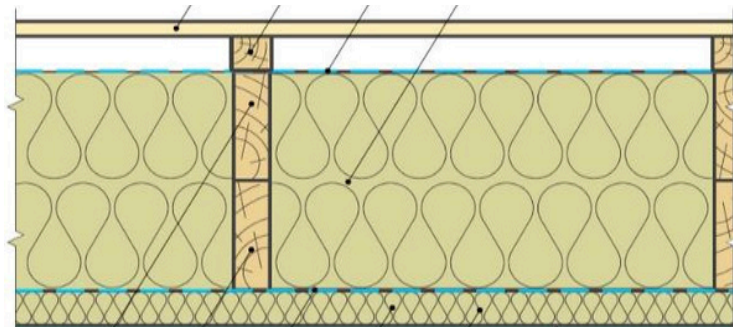
Total cost

Pitched roof

Thickness, mm

Energy efficiency index, U, W/m²K

Calculation area, m²



Thickness, mm

Materials

Lath 22x70 mm

Super defusion membrane

Beam 45*220 mm C24 CE

Basalt insulation material IZOVAT, 40 kg/m³ 100 mm

Basalt insulation material IZOVAT, 40 kg/m³ 100 mm

Vapour barrier

Lath 22x70 mm

OSB-3 Kronospain 15 mm

Total thickness, mm

Total cost

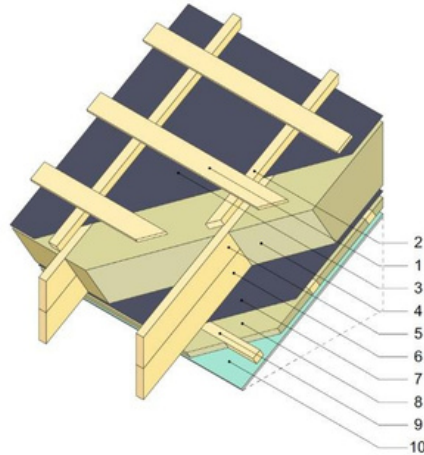


Pitched roof

Thickness, mm

Energy efficiency index, U, W/m²K

Calculation area, m²



| Materials | Thickness, mm |
|--|---------------|
| Lath 45x45 mm | |
| Lath 30x50 mm | |
| Super defusion membrane | |
| Beam 45*220 mm C24 CE | |
| Basalt insulation material IZOVAT, 40 kg/m ³ 100 mm | |
| Basalt insulation material IZOVAT, 40 kg/m ³ 100 mm | |
| Beam 45*45 mm C24 CE | |
| Basalt insulation material IZOVAT, 40 kg/m ³ 50 mm | |
| Vapour barrier | |
| Lath 22x70 mm | |
| Total thickness, mm | |
| Total cost | |