



Grey or black panel

Bringing a dash of elegance into any room in your home, this Tesla model is available in black or grey, so you can easily incorporate it into any modern interior design.



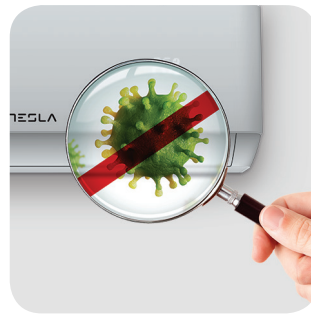
Low-noise airflow

Without decreasing the airflow volume, this device feature can help reduce noise levels of AC indoor unit by lowering the fan speed.



Horizontal swing

You can use the horizontal swing feature to adjust the airflow direction, if you prefer the air from the AC to blow sideways.



Additional health filter: Lysozyme

This AC uses a new type of lysozyme filter, which helps with ensuring air quality. When air goes through the filter, the latter can destroy harmful bacteria and viruses.

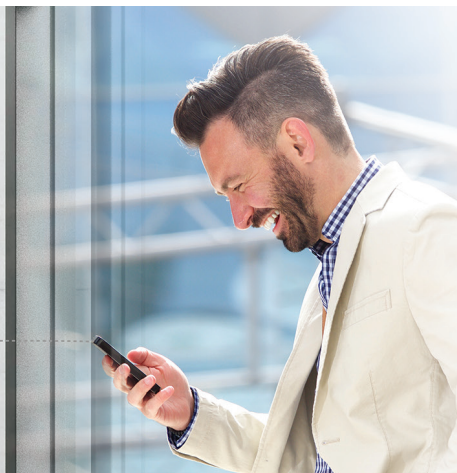


Additional health filter: Ionizer

A certain level of ion saturation makes harmful microorganisms in the air fall to the ground, reducing chances of people inhaling them. Devices with an ionizer can be extremely useful for those suffering from allergies.

Wi-Fi

Wi-Fi feature means that Tesla air conditioner can also be controlled with mobile phones or other smart devices: an option that adds to your everyday convenience and comfort!





Features

4-Fan Speed: Low/Middle/High/Turbo, 3D Air Flow: Vertical/Horizontal Auto Swing, Turbo Mode, Anti-cold Air, I Feel, Low Temperature Heating/Cooling -15°C, Comfortable Cooling, Independent Dehumidification, Auto mode, Display On/OFF, smart airflow, Rapid Cooling and Rapid Heating, Intelligent defrost, Emergency Button, Anti-rust proo cabinet, Wide Voltage Range Start-up, Strong Cooling at 60°C, Leakage Detection, Auto-restart, Self-diagnosis, Louver Position Memory, Dual drainage, Washable filter, Hidden Display, Self-cleaning, Refrigerant Leak Detection, Sleep Mode, ECO function, Timer, WIFI, Ionizer filter

Capacity			12000BTU
Rated volt and frequency		V/Hz	220-240V~/50HZ
Mode			Cooling Heating
Rated capacity		W	3400(1000~3770) 3420(1000~3810)
Power input		W	1130 922
Current input		A	5,80 4,70
SEER-SCOP/ Energy Class		W/W	6,1/ A++ 4,0/A+
Operating range		(°C)	0 - 53°C -20°C - 30°C
Energy consumption (per year, based on standard test results)		kwh	195 840
Dehumidifying		Kg/h	1,2
Degree of protection (IN) / (OUT)		(IP)	IPX4/IPX4
Class of electric protection (IN) / (OUT)		Class I / Class II	I/I
Max. input consumption		W	1720
Max. current		A	10
Compressor	Model		KSN98D32UEZ
	Type		Rotary
	Brand		GMCC
Indoor	Fan motor	Model	1170030067G
		Power input	W 20W output
		Capacity	uF 2
		Indoor Fan Speed RPM	r/min ≤1320
	Indoor fan	Dia. / Length	mm φ92×578
		Indoor Air Circulation	m³/h 550
	Indoor Noise Level dB	dB(A) 47/43/35/32	
	Net Dimension (L×W×H)	mm 777×250×201	
	Packing Dimension (L×W×H)	mm 840×315×260	
	Net Weight/Gross Weight	Kg 8/10.5	
Outdoor	Fan motor	Model	1170040162AB
		Power input	W 33W output
		Capacity	uF /
		Outdoor Fan Speed RPM	r/min ≤1000
	Outdoor fan	Length	mm φ384×134
	Outdoor Noise Level dB	dB(A) 50	
	Net Dimension (L×W×H)	mm 777×498×290	
	Packing Dimension (L×W×H)	mm 818×325×520	
	Net Weight/Gross Weight	Kg 24/25	
	Refrigerant type/weight	g R32/0.57kg	
Refrigerant piping	Liquid side / Gas side	mm 6.35/9.52	
	Max. refrigerant pipe length / Max. difference in level	m 25/10	