



UV lamp

Ultraviolet light offers additional assistance while fighting against unwanted microorganisms. Emitting waves of up to 285 nm, it helps in creating virus and bacteria-free area without negative side effects.



56°C sterilization

During the self-cleaning process, the indoor unit operates in a special mode that helps evaporator to dry. This feature is designed to keep the AC indoor unit clean and help prevent bacterial growth.



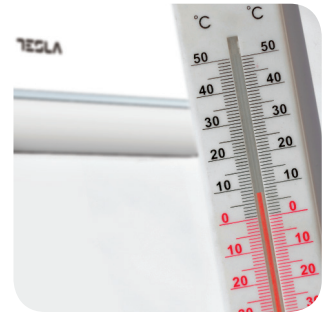
Night mode

When this mode is activated, your AC can increase or decrease temperature by 1°C per hour during the first three hours.



Smart airflow

You can choose between different air dispersion positions available, such as blanket-style, shower-style, breeze etc.

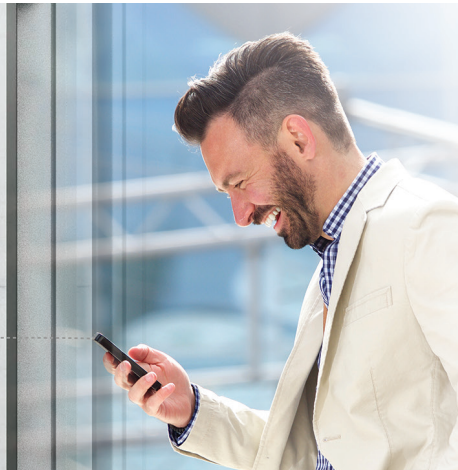


8°C heating feature

This option will start the heating mode automatically when the room temperature goes below 8°C, returning to standby once it reaches this number.

Wi-Fi

Wi-Fi feature means that Tesla air conditioner can also be controlled with mobile phones or other smart devices: an option that adds to your everyday convenience and comfort!





Features

4-Fan Speed: Low/Middle/High/Turbo, 3D Air Flow: Vertical/Horizontal Auto Swing, Turbo Mode, Anti-cold Air, I Feel, Low Temperature Heating/Cooling -15°C, Comfortable Cooling, Independent Dehumidification, Auto mode, Display On/OFF, smart airflow, Rapid Cooling and Rapid Heating, Intelligent defrost, Emergency Button, Anti-rust proo cabinet, Wide Voltage Range Start-up, Strong Cooling at 60°C, Leakage Detection, Auto-restart, Self-diagnosis, Louver Position Memory, Dual drainage, Washable filter, Hidden Display, Self-cleaning, Refrigerant Leak Detection, Sleep Mode, ECO function, Timer, WIFI, UVC Sterilization, Ionizer filter

Capacity			18000BTU
Rated volt and frequency		V/Hz	220-240V~/50HZ
Mode			Cooling Heating
Rated capacity		W	5100(1250-5900) 5130(1250-6080)
Power input		W	1574 1382
Current input		A	8,20 7,20
SEER-SCOP/ Energy Class		W/W	6,1 A++ 4 A+
Operating range		(°C)	0 - 53°C -20°C - 30°C
Energy consumption (per year, based on standard test results)		kwh	293 1330
Dehumidifying		Kg/h	1,8
Degree of protection (IN) / (OUT)		(IP)	IPX4/IPX4
Class of electric protection (IN) / (OUT)		Class I / Class II	I/I
Max. input consumption		W	2550
Max. current		A	13
Compressor		Model	KSN98D32UEZ
		Type	Rotary
		Brand	SANYO
Indoor	Fan motor	Model	1170030067G
		Power input	W 20W output
		Capacity	uF 2
		Indoor Fan Speed RPM	r/min ≤1320
	Indoor fan	Dia. / Length	mm φ92×578
	Indoor Air Circulation		m³/h 820
	Indoor Noise Level dB		dB(A) 50/47/43/36
	Net Dimension (L×W×H)		mm 920×306×195
	Packing Dimension (L×W×H)		mm 990×380×265
	Net Weight/Gross Weight		Kg 11/13
Outdoor	Fan motor	Model	1170040162AB
		Power input	W 33W output
		Capacity	uF /
		Outdoor Fan Speed RPM	r/min ≤1000
	Outdoor fan	Length	mm φ384×134
	Outdoor Noise Level dB		dB(A) 55
	Net Dimension (L×W×H)		mm 853×602×349
	Packing Dimension (L×W×H)		mm 890×628×385
	Net Weight/Gross Weight		Kg 35/38
	Refrigerant type/weight		g R32/1.00kg
Max. Discharge/Max. Suction pressure		Mpa 3.7/1.2	
Refrigerant piping		Liquid side / Gas side	mm 6.35/9.52
		Max. refrigerant pipe length / Max. difference in level	m 25/10