



MOBILE INDUCTION AND RESISTANCE HEATERS

 CAR REPAIR |  MAINTENANCE

CATALOGUE

02/ **2020**

www.dawell.cz

CONTENTS

About us	2	Induction heater DHI-2 WIN	7
Application and use of induction	3	Induction heater DHI-44E LKW	8
Induction heater DCI-12 COMPACT	4	Induction heater DHI-120E LKW	9
Induction heater DHI-15 PKW	5	Accessories	10-11
Induction heater DHI-22 PKW	6		

ABOUT US

DAWELL CZ s.r.o.

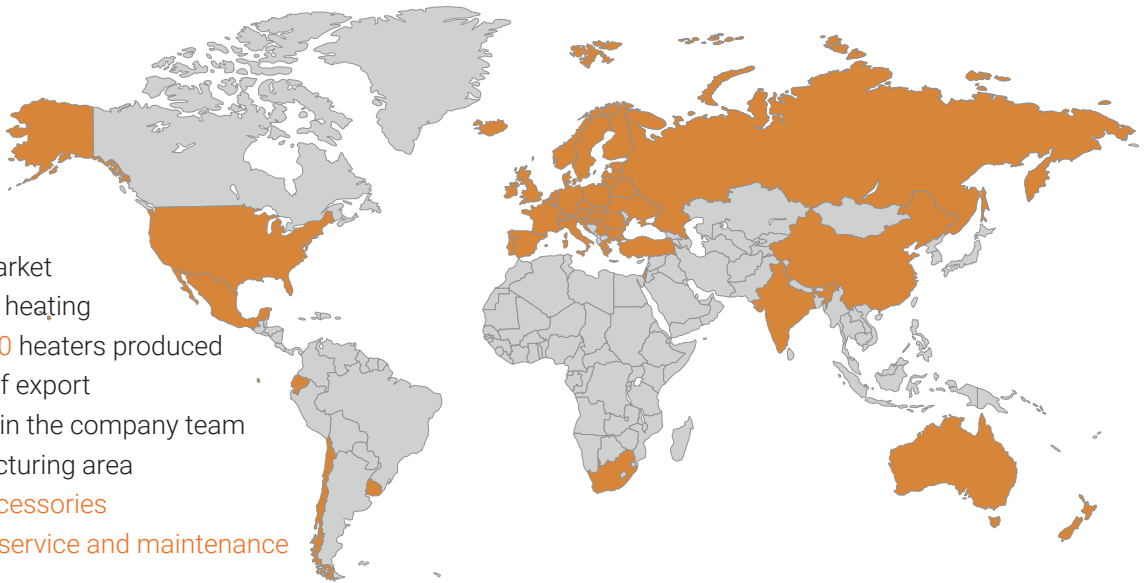
DAWELL CZ s.r.o. was established in 2012 with a vision of building a development, manufacturing and export company. The primary line of business therefore covered development of own products in the industrial area of mobile resistance and induction heaters, their manufacturing and sales around the world.

Development of mobile resistance and induction heaters.

Based on a market survey made in 2011 and 2012 and **DAWELL CZ s.r.o.** employees' experience of previous work, the management decided to develop mobile resistance heaters in the DHM/DHC series, which were not available on the market. With the experience of mobile resistance heaters, which brought new visions and market knowledge, the development department started developing small mobile induction heaters DHI- 15, designed for car repair shops and workshops, and then the larger induction heater of the DHI-4 series, DHI-45, DHI100 a DHI120 as well as for application in car repair shops, workshops, industrial and manufacturing plant.

Manufacturing facilities and development unit of DAWELL CZ s.r.o.

The sales of our DHC and DHI exceeded all our expectations. It helped us build the manufacturing facilities of **DAWELL CZ s.r.o.** in Třebíč and the development unit in Brno. The development unit focuses on complete development of new equipment for our own production needs in tight cooperation with the manufacturing and business department in Třebíč. The new business and development experience showed us an attractive mobile heater market potential, which **TEAM DAWELL CZ** intends to continue to grow.



- 8 years on the market
- 15 basic types of heating
- More than 30.000 heaters produced
- 42 destinations of export
- 30 professionals in the company team
- 1.200m² manufacturing area
- Wide range of accessories
- Fast and reliable service and maintenance

Manufacturing and Sales office area

1200m²



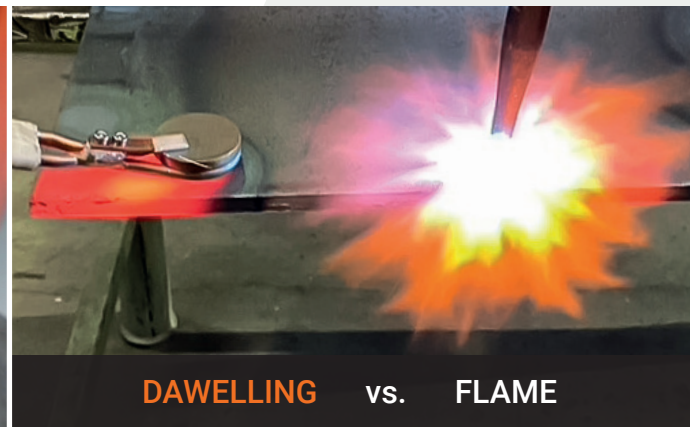
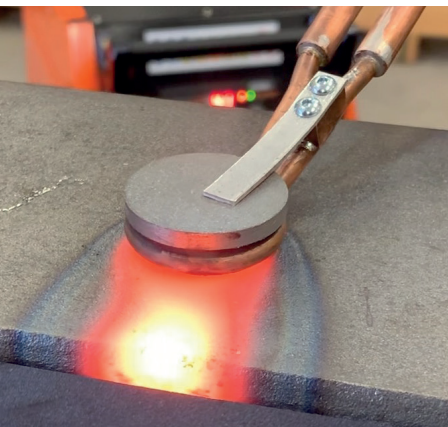
DAWELL INDUCTION

EFFECTIVE AND ECONOMIC REPLACEMENT OF FLAME HEATING

DEVELOPED AND DESIGNED FOR

- GARAGES AND MAINTENANCE
- TRANSPORT UNDERTAKINGS
- REPAIR SHOPS FOR TRUCKS AND AGRICULTURAL AND CONSTRUCTIONS MACHINERY
- METAL MANUFACTURING AND WELDING WORKSHOPS
- INDUSTRIAL AND MANUFACTURING FACILITIES
- SOLDERING AND BRAZING
- AUTOMATED AND ROBOTIC WORKPLACES
- CONSTRUCTION AND ASSEMBLY
- AVIATION AND SHIPBUILDING INDUSTRY
- ASSEMBLY, SERVICE AND INSTALLATION WORKS
- EASY AND QUICK USE

 **YouTube**
Follow our youtube



DAWELLING vs. **FLAME**



- Lower operating costs
- Safe use
- Accuracy of heating focus
- Heating rate
- High mobility
- Very silent operation
- Ecological
- Compactness, small size
- Simple use and operation
- No operator certificate required

INVERTER HEATER DCI-12 PKW

COMPACT INDUCTION HEATING FOR CAR REPAIR AND MAINTENANCE

INDUCTION HEATER DCI-12 in compact design is designed for fast, efficient and safe heating of metal parts, especially threaded joints, nuts, body sections and transmission shafts of cars etc. It replaces heating by oxyacetylene and butane-propane flame. It can be used in operations which require speed, flexibility and where there is a risk of damaging heated parts by open flame (upholstery, lacquer, rubber boots, wiring etc.)



ADVANTAGES

- Mobility – weight 2 kg and dimensions of small cordless drill.
- Flexibility and ease of use- power supply 1x 230 V. Just plug in, press button and start heating **(plug and play)!**
- Power 1,2kW/1,8kVA, high loading factor – fast heating.
- Easy handling and access due to its small size. Heating of a specific point.
- Ergonomic and well done design.
- Induction heating minimizes injury of the operating staff and the risk of fire is greatly decreased.

IDEAL TOOL FOR EVERY WORSKHOP

- It facilitates the dismantling of rusty screws, old parts, for heating of exhaust pipes, screws, nuts, bearings, tool heating prior hardening, gluing, soldering, also suitable for defrosting
- Low operating costs, no need to train the operating staff to work with oxyacetylene torch and propane-butane burners.
- Easy and quick to use - undemanding operation, quick preparation.
- Use in car repair and car maintenance.

EQUIPMENT

- Plastic case and basic practical set of coils.
- Protection against overheating and overload of the source and short circuit of the coil.
- Processor control optimizes the heating process.
- LED illumination in front of the induction coil.
- Wide range of **DAWELL accessories** available.

DAWELLING
ECOLOGICAL,
ECONOMICAL
AND SAFE
HEATING



BASIC SET
(order no. 05-200-01):
DHI-12 PKW, FLEXI, PAD,
19 mm, 26 mm

								
50 Hz	8	kW / kVA	Freq. kHz	Ventilator	IP	mm	kg	m
230V 1x	8	1,2 / 1,8	40-60	OK	20	375x65x85	2	2

INVERTER HEATER DHI-15 PKW

INDUCTION HEATER FOR CAR REPAIR SHOPS

DHI-15 INDUCTION HEATER is designed for quick and safe heating of metal parts of cars, farming machinery, buses, etc. It replaces heating with oxyacetylene and propane-butane torches. It finds application in operations that require speed and flexibility and pose a risk of damage around heated parts with naked flame (upholstery, pain, rubber sleeves, electrical installation, etc.).

IDEAL TOOLS FOR EVERY WORKSHOP

- Facilitates removal of rusty bolts and old parts, heating of exhaust pipelines, Bolts, nuts, bearings, tools before hardening, gluing, soldering, and ideal for defrosting.
- Low operating costs, no need to train operating staff in working with oxyacetylene and propane-butane torches.
- Easy and quick to use – simple operation, quick preparation
- Applicable in automotive, railway and shipbuilding industry, metalworking and maintenance.
- Safety – absence of flames.

ADVANTAGES

- Mobility – weight 4.5 kg and dimensions of a small welding machine.
- Power 1,5kW/3,2kVA, high loading factor – high speed.
- Easy handling and access – 70 cm coil connecting cable with handle.
- Flexibility and ease of use – power supply 1x 230 V. Just connect to the electrical network, press button and start heating (**plug and play!**)
- Ecological and economical operation with very low noise levels.

EQUIPMENT

- Wide range of **accessories DAWELL**.
- Automatic resonance frequency settings.
- Processor control.
- Overload alarm, coil short circuit alarm.
- Design resistant to short circuit and open circuit.
- Robust design using IGBT transistors.



BASIC SET
(order no. 05-001-01):
DHI-15 PKW, FLEXI, PAD,
19 mm, 26 mm

800°C within 20 sec.



50 Hz	8	kW / kVA	Freq. kHz	Ventilator	IP	mm	kg	m	M
230V 1x	8	1,5 / 3,2	25-60	OK	20	200x140x75	4,5	3	0,7

INVERTER HEATER DHI-22 PKW

POWERFUL INDUCTION HEATER FOR AUTO SERVICE AND MAINTENANCE

DHI-22 PKW INDUCTION HEATER is designed for fast, efficient and safe heating of metal parts, especially threaded joints, nuts, body sections and transmission shafts of passenger cars, busses, trucks etc. It replaces heating by oxyacetylene and butane-propane flame. It can be used in operations which require speed, flexibility and where there is a risk of damaging heated parts by open flame (upholstery, lacquer, rubber boots, wiring etc.)



EQUIPMENT

- Plastic case and basic practical set of coils.
- Protection against overheating and overload of the source and short circuit of the coil.
- Processor control optimizes the heating process.
- LED illumination in front of the induction coil.
- Wide range of **DAWELL accessories** available.



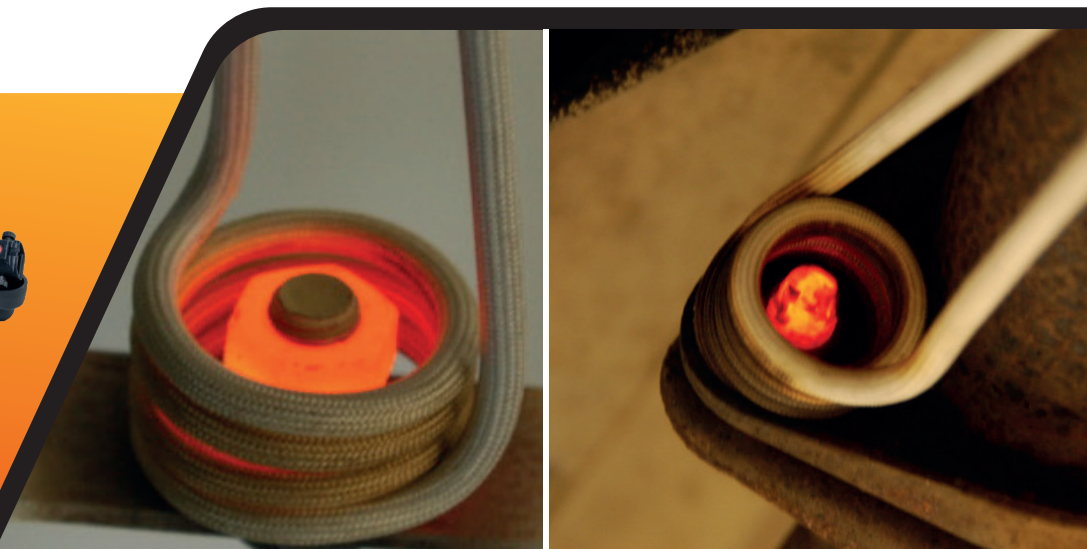
BASIC SET
(Order no. 05-300-01)
DHI-22 PKW, FLEXI, PAD,
19 mm, 26 mm




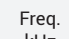

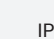
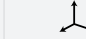
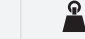
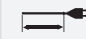
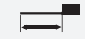
IDEAL TOOLS FOR EVERY WORKSHOP

- It facilitates the dismantling of rusty and bonded threaded joints, old car parts and constructions, it is also intended for heating of exhaust pipes, screws, nuts, bearings, tool heating prior hardening, gluing, soldering, also suitable for defrosting.
- Low operating costs, no need to train the operating staff to work with oxyacetylene torch and propane-butane burners
- Easy and quick to use – undemanding operation, quick preparation.
- Ideal for use in automotive, railway and shipbuilding industry, agriculture, metalworking, industry and general maintenance.

ADVANTAGES

- Power 2,2kW/3,8kVA, high loading factor – high heating speed.
- Mobility – weight 4.5 kg, dimensions of a small welding machine.
- Easy handling and access - coil interconnect cable 85 cm, small and ergonomic handle, shoulder strap. Heating specific point.
- Flexibility and ease of use – power supply 1x 230 V. Just plug in, press button and start heating (**plug and play!**)
- Ergonomic and well done design.
- Highly safety - no cylinders and open flame.
- No risk of damaging plastic parts of the car, wiring, upholstery and lacquer.
- Induction heating minimizes injury of the operating staff and the risk of fire is greatly decreased.
- **Ecological and economical operation with very silent operation.**



									
50 Hz	10	kW / kVA	Freq. kHz	Ventilator	IP	mm	kg	m	M
230Vx1	10	2,2 / 3,8	25-60	OK	20	220x150x95	4,2	3	0,85

INDUCTION HEATER FOR CAR REPAIR **DHI-2 WIN**

QUICK AND SAFE BODYWORK HEATER

Small multifunction induction heater designed for car repair shops. Enables quick and effective heating of metal parts and car bodyworks. The DHI-2 DENT enables output control and heating time setting. It is an excellent aid in repairing small and gentle dimples, damage in car bodyworks, windscreen replacement and other applications.

IDEAL TOOLS FOR BODYWORK REPAIR

- Used primarily for quick and effective local heating of metal parts of car bodyworks.
- Straightening of dimples made by hail without damage to bodywork paint.
- **Coil PDR (order no. 08-101)**
Precision tool for heating and straightening soft dents in car bodywork. Correct use results in zero pain damage.
- **Coil DEEP FIELD (order no. 08-103)**
Deep field coil is designed for heating sheet metal through magnetic-neutral materials such as glass, plastics, rubber, etc.
- **Coil POWER (order no. 08-102)**
Heating of glued joints of car body parts.

PROPERTIES

- Easy parameter settings and safe use.
- Time savings due to using the induction technology.
- Comfortable and quick to use.

FEATURES

- Smooth output adjustment.
- Heating time settings.
- Multifunction display.
- Connector for remote control.

BASIC SET
(order no. 08-005):
DHI-2 WIN,
Plastic case,
connecting cable,
coil PDR



DHI-2 WIN
subtlety and precision



DHI-15 PKW
speed and heating power

SET OF TWO SPECIAL AND PRECISION INDUCTION HEATING AT THE PRICE OF ONE MULTIFUNCTION MACHINERY.

Automotive set of induction heaters (order no. 05-100)



50 Hz	8	kW / kVA	Freq. kHz	Ventilator	IP	mm	kg	m	M
230V 1x	8	0,9 / 1,5	40-100	OK	23	230x105x100	1,6	2	0,9

MOBILE INDUCTION HEATER **DHI-44E LKW**

QUICK AND SAFE HEATING IN THE CAR REPAIR SHOP

The **DHI-44E LKW INDUCTION HEATER** is a portable water-cooled induction heater with a two-meter induction burner and optional replaceable focus coil extenders. The device is designed for heating ferromagnetic and conductive materials. Its compact and lightweight design, high power output and ease of use make it ideal for workshops, car repair shops, maintenance shops and the repair industry in general.



BASIC SET (order no. 07-003):
DHI-44E LKW
Side focus coil
Coolant liquid 2,5 l
Straight Car nut coil

SUPPORTED TECHNOLOGIES

- DHS3, BIPT, DIPA, QST, ACMS, DFU

ADVANTAGES

- Mobility – weight 11,5 kg including water cooling.
- Power 3,7kW/4kVA, high loading factor.
- Easy use – burner length 2 m.
- Flexibility and ease of use.
- Heat deep-seated and hard-to-reach alloy wheel bolts with narrow Car Nut Coil.

DEAL TOOL FOR THE REPAIR INDUSTRY

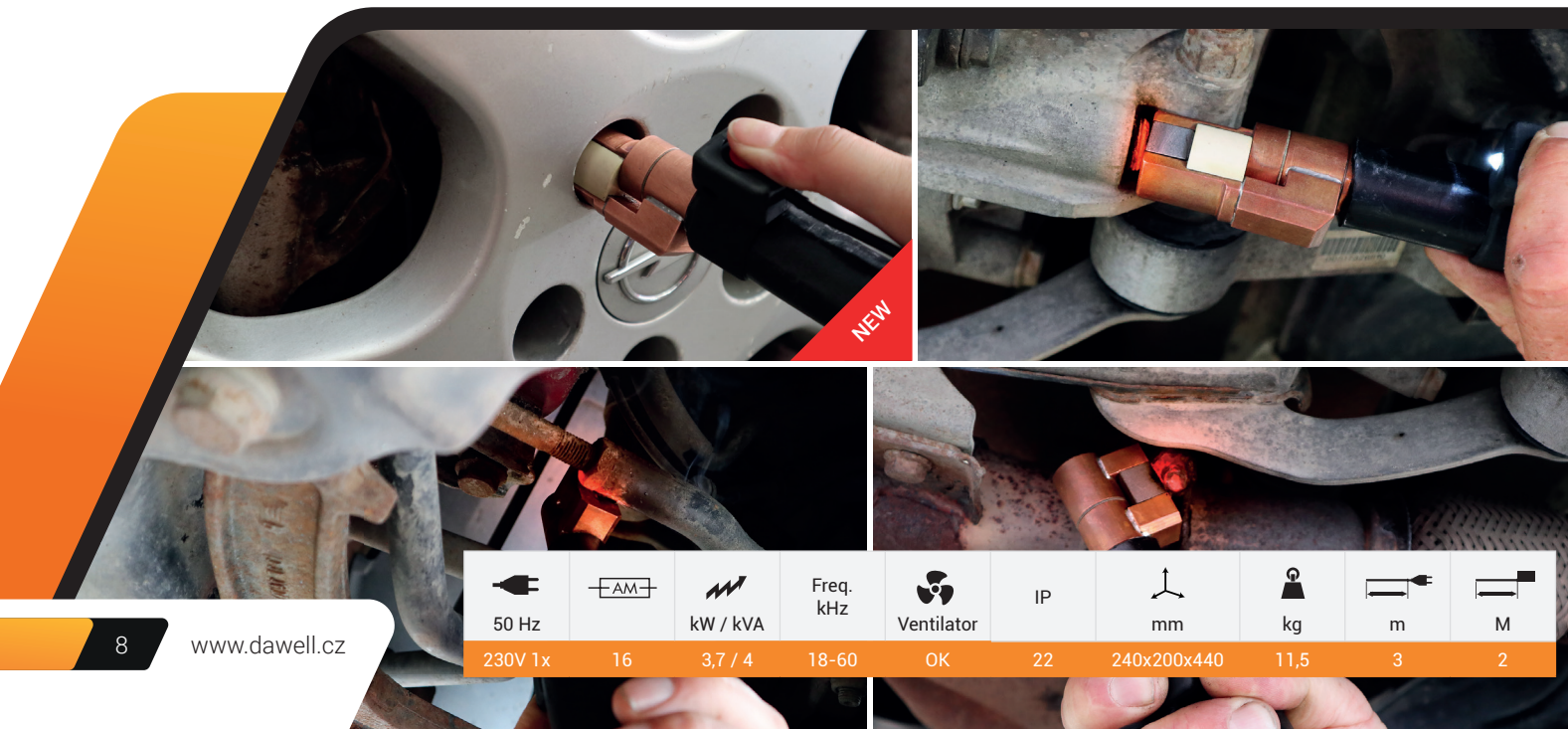
- Facilitates removal of rusty bolts and old parts, heating of exhaust pipelines, bolts, nuts, bearings, tools before hardening, gluing, soldering, and ideal for defrosting.
- Low costs, no need to train operating staff in working with oxyacetylene and propane-butane torches.
- Applicable in the automotive, railway and shipbuilding industry, manufacturing, mechanical engineering, workshops, car repair shops, heating and pipeline installation, maintenance, etc
- Safety – absence of flames.

EQUIPMENT

- Clear display capable of showing up to 7 parameters.
- Water cooling of induction coils.
- Smooth power adjustment 10-100%.
- Timer and factory settings.
- USB for software updates.
- Constant power mode CP and constant magnetic field CF mode.
- LED illumination in front of the induction coil.
- Wide range of **accessories DAWELL**.

Supported technology abbreviations DHI-44 and DHI-120E

DHS3	Dawell Heating Control System 3
BIPT	Boost Induction Power Technology
DIPA	Dynamic Induction Power Adjust
QST	Quiet Cooling Technology
ACMS	Automatic Check And Monitor System
DFU	Device Firmware Update



50 Hz	16	kW / kVA	Freq. kHz	Ventilator	IP	mm	kg	m	M
230V 1x	16	3,7 / 4	18-60	OK	22	240x200x440	11,5	3	2

MOBILE, POWERFUL INDUCTION HEATER **DHI-120E LKW**

SAFE HEATING FOR AUTOMOTIVE AND WELDING INDUSTRY

DHI-120E LKW is mobile, water-cooled induction heater equipped with a 4 or 6 meter induction burner with the possibility of replaceable induction adapters. The device is intended for heating of ferromagnetic and conductive materials. Thanks to the compact design high performance, versatile use with smooth output adjustment, it is suitable for various applications especially in car repair shops, truck and agricultural machinery repair shops, production facilities, welding workshops and other industries.

IDEAL TOOLS FOR EVERY WORKSHOP

- Heating of rusty bolts, nuts and old parts, straightening of steel frames and truck chassis.
- Heating prior to hardening, straightening, forging, bending of structural steel profiles.
- Low operating costs , training of operators is not necessary like for methods working with autogenous and propane-butane burners.
- Simplicity and ease of use - simple operation, fast heating process.
- Safety and ecology - absence of flame.
- Use in the automotive, railway, aerospace, marine and industry in general, metal-working, maintenance.

ADVANTAGES

- Mobility – weight 58 kg including water cooling.
- Replacement of autogenous working methods (flame heating).
- Very silent operation.
- Power 10kW/12kVA, high loading factor.
- Ease of use – 4/6m long burner.
- Flexibility and ease of use.
- Robust and big wheels on the removable chassis

EQUIPMENT

- Clear display with visualization of the parameters.
- Water cooled inductors.
- Constant power mode CP and constant magnetic field CF mode
- Continuous output control 10-100%.
- USB connection for software update.
- LED inductor lighting.
- Wide range of **accessories DAWELL**.



BASIC SET
DHI-120E LKW
(order no. 09-005-01)
Round focus coil
Coolant liquid 10 l

SUPPORTED TECHNOLOGIES
DHS3, BIPT, DIPA, QST, ACMS, DFU



50 Hz	AM	kW / kVA	Freq. kHz	Ventilator	IP	mm	kg	m	M
3x400V	3x16	10 / 12	18 - 45	OK	21	400x760x700	58	5	4/6

ACCESSORIES

INDUCTORS AND ACCESSORIES FOR DCI-12 PKW, DHI-15 PKW A DHI-22 PKW



Type coil	15/220 mm	19/220 mm	23/220 mm	26/220 mm	32/220 mm	38/220 mm	45/220 mm
Front white	80-101-01	80-102-01	80-104-01	80-105-01	80-106-01	80-107-01	80-108-01
Side white	80-151-01	80-152-01	80-154-01	80-155-01	80-156-01	80-157-01	80-158-01

Front coils 15-45 mm / Side coils 15-45 mm (viz. table). Possibility to order coils in black.



FLEXI ceramic coil
(order no. 80-257-01)



FLEXI coil
white (order no. 80-253-01)
black (order no. 80-263-01)



WIRE coil
white (order no. 80-121-01)
black (order no. 80-131-01)



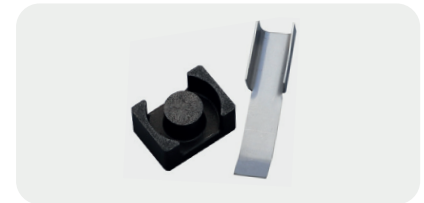
PAD radius coil
white (order no. 80-204-04)
black (order no. 80-213-01)



PAD removal coil
white (order no. 80-202-01)
black (order no. 80-212-01)



Focus coil
(order no. 80-251-01)



Spare focus coil core
(order no. 50-005)



EASY coil set straight
white (order no. 80-171-01)
black (order no. 80-181-01)



EASY coil set side
white (order no. 80-172-01)
black (order no. 80-182-01)

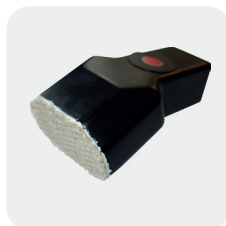


MAX coil set
white (order no. 80-187-01)
black (order no. 80-188-01)

INDUCTORS AND ACCESSORIES FOR DHI-2 WIN



Coil PDR
(order no. 08-101)



Coil POWER
(order no. 08-102)



Coil DEEP FIELD
(order no. 08-103)



Connecting cable
(order no. 08-100)

ACCESSORIES

INDUCTORS AND ACCESSORIES FOR DHI-44E LKW



Coil „Car Nut“
(order no. 07-108)



Focus coil, side
(order no. 07-103)



Focus coil, inclined
(order no. 07-102)



Trolley
(order no. 07-400-01)



Handle extension
(order no. 07-101)



Round focus coil
(order no. 07-110)
And round coil reducer
(order no. 07-105)



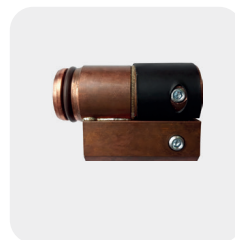
Focus coil, straight
(order no. 07-104)



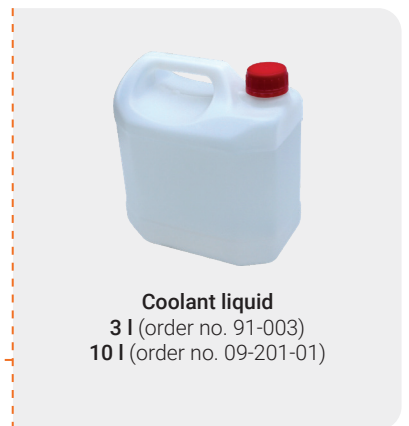
Coil 26 mm
(order no. 81-002)



Coil 20 mm
(order no. 81-001)



Reducer
(order no. 07-105)



Coolant liquid
3 l (order no. 91-003)
10 l (order no. 09-201-01)

INDUCTORS AND ACCESSORIES FOR DHI-120E LKW



Round focus coil
(order no. 09-102-01)



Round front focus coil
(order no. 09-119-01)



„U“ profile inductor 14 mm
(order no. 09-115-01)



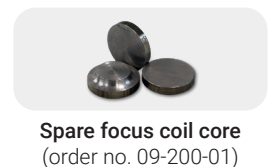
Double-turn round coil
20 mm (09-115-01)



Single-turn round coil
22 mm (09-103-01)
28 mm (09-104-01)
34 mm (09-105-01)
40 mm (09-106-01)
47 mm (09-107-01)
57 mm (09-108-01)

SYMBOLS AND ABBREVIATIONS USED - Technical data symbols

50 Hz Grid frequency and voltage	AM Breaker	VA Induction power	Freq. kHz Operating frequency	Fan	IP Protection	mm Dimensions	kg Weight	m Mains cable length	m Induction cable length
-------------------------------------	---------------	-----------------------	----------------------------------	-----	------------------	------------------	--------------	-------------------------	-----------------------------



RANGE OF MOBILE WORKSHOP AND INDUSTRIAL HEATING DEVICES - DAWELL CZ

Car repair garages and maintenance: DCI-12 PKW / DHI-15 PKW / DHI-22 PKW / DHI-2 WIN / DHI-44E LKW / DHI-120E LKW Affordable price, high mobility, quick heating, high performance, simple operation.



Welding and the industrial market: DHI-44F / DHI-45(F/C) / DHI-100(F/C)/120 (F/C) / DHC-6510R Manual and automated use, connectivity with PCs, robots and manufacturing lines, high performance and load factor, variability of usage, broader setting options, temperature sensor connection option.






Soldering and brazing:
DHI-45C / DHI-100C/120C
Optimised for manual and eventual machine brazing.



DAWELL CZ s.r.o.
Budischowského 1073
674 01 Třebíč
Czech Republic

mobil: +420 602 364 884
web: www.dawell.cz
e-mail: sales@dawell.cz

-  facebook.com/dawellcz
-  instagram.com/dawellcz
-  youtube.com/dawellcz

Dealer: