

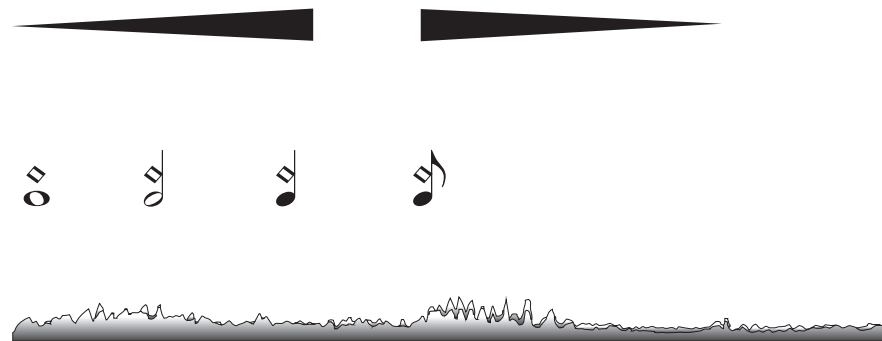
Pyrox

III

Quietly flickering

Instructions

from *pp* to *mp*



Increasing - decreasing bow pressure. Very subtle variant in bow pressure following the cresc./dim. signs. The amount of pressure can variate according to taste.

Harmonics - sounding two octaves higher.

Graphic illustration for the electronic part of each individual instrument. Height roughly indicates volume and gradient tone-color (timbre).

Grave Con moto ♩ = 44

con sord.
senza vibrato

Musical score for Violin I, Violin II, Viola, and Violoncello, measures 1-10. The score is in 4/4 time and includes dynamic markings (pp, mp) and performance instructions (con sord., senza vibrato). The Violin I part features a melodic line with a 5th finger marking. The Viola part has a sustained accompaniment. The Violoncello part has a melodic line with a 3rd finger marking.

Musical score for Violin I, Violin II, Viola, and Violoncello, measures 11-20. The score continues the previous section with dynamic markings (mp, pp) and performance instructions. The Violin I part features a melodic line with a 3rd finger marking. The Violoncello part has a melodic line with a 3rd finger marking.

20

pp mp mp pp mp

5

mp

mp

pp

mp

mp

pp

mp

5

mp

Detailed description: This system contains five measures of music. The first staff (treble clef) has a whole note chord in the first measure, followed by rests. The second staff (treble clef) has a melodic line starting with a five-fingered scale-like figure. The third staff (bass clef) has a whole note chord in the first measure, followed by rests. The fourth staff (bass clef) has a melodic line with a five-fingered scale-like figure. Dynamics include *pp*, *mp*, and *pp*. A double bar line is present after the second measure.

26

niente

pp mp pp mp niente

3

niente

Detailed description: This system contains six measures of music. The first staff (treble clef) has a whole note chord in the first measure, followed by rests. The second staff (treble clef) has a melodic line with dynamics *pp*, *mp*, *pp*, *mp*, and *niente*. The third staff (bass clef) has a whole note chord in the first measure, followed by rests. The fourth staff (bass clef) has a melodic line with a triplet of eighth notes in the first measure, followed by rests. Dynamics include *pp*, *mp*, *pp*, *mp*, and *niente*. A double bar line is present after the second measure.