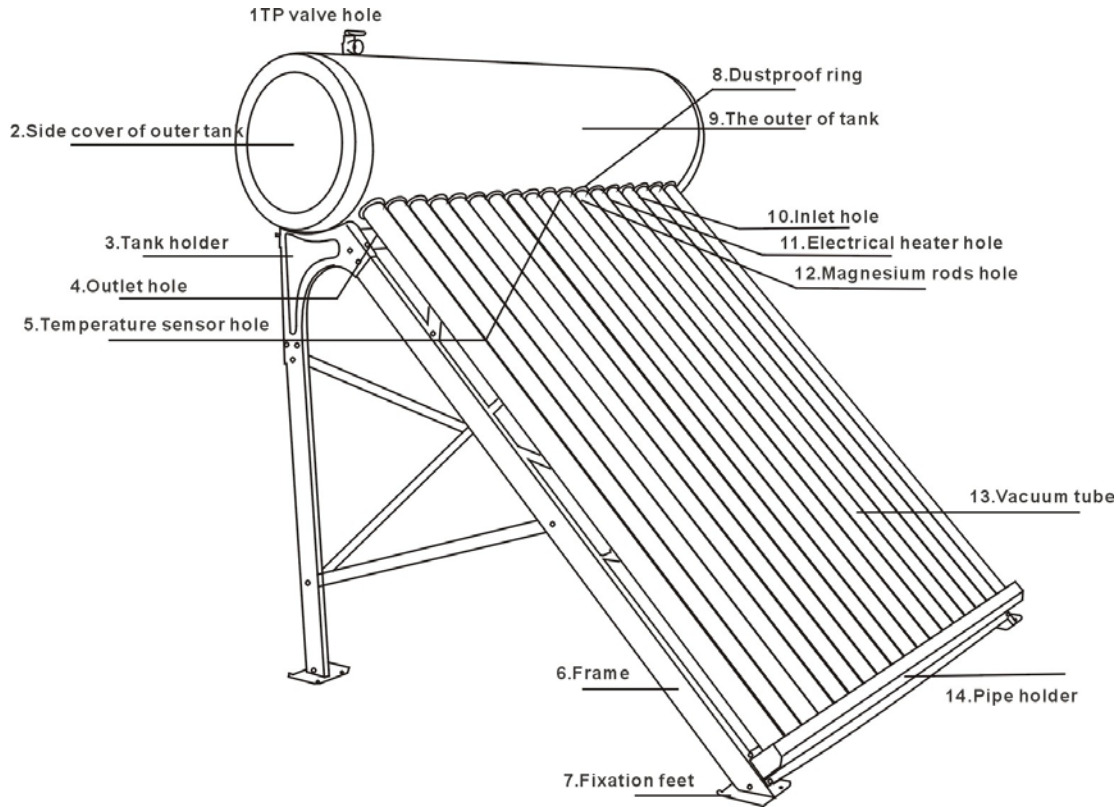


# Construction



## Frame

The frame using thicken hot galvanizing steel, after process of static , plastic spraying, has strong strength and resistant to corrosion.

## Flat roof



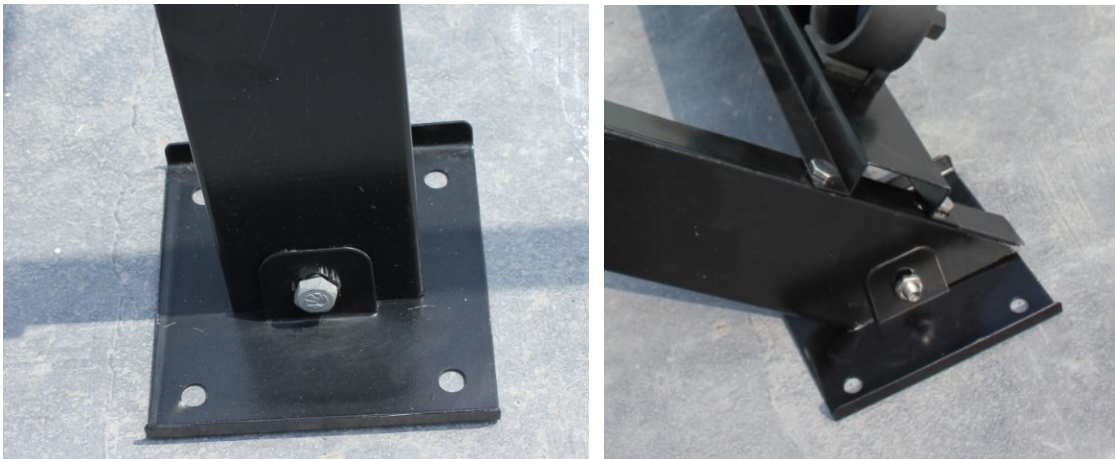


**a. Fastener**



The fastener is made of Ni4 stainless steel, which is resistant to corrosion, solving the common screw's rusty problem.

**b. Windproof foot pad**



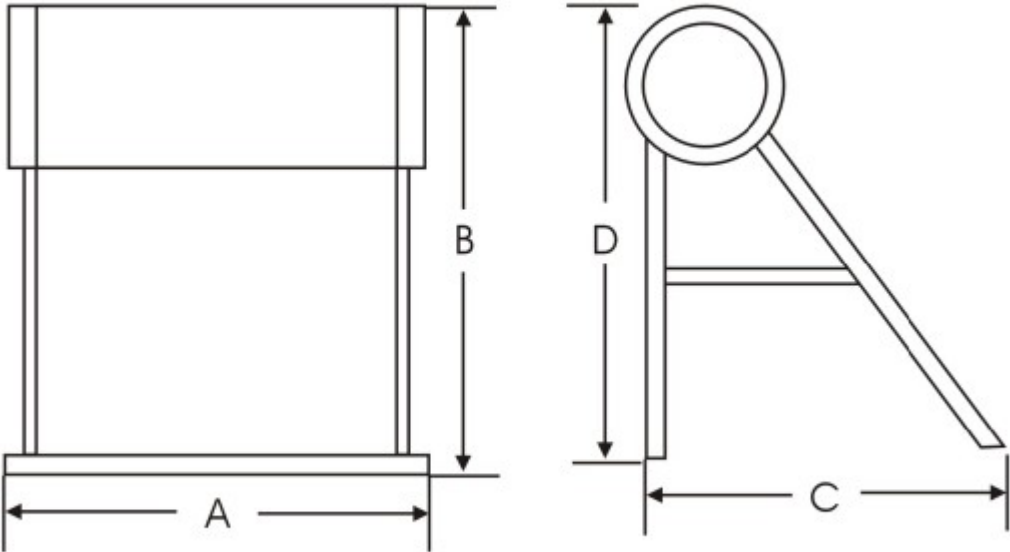
It strongly fastens the water heater with roof, greatly improves the resistance to wind

**c. Tube support**



The tube support is made in PA material, after high temperature fumigation process, it has strong strength and anti-aging ability, ensure the tube safety and the fastness of the frame, easy for installation.

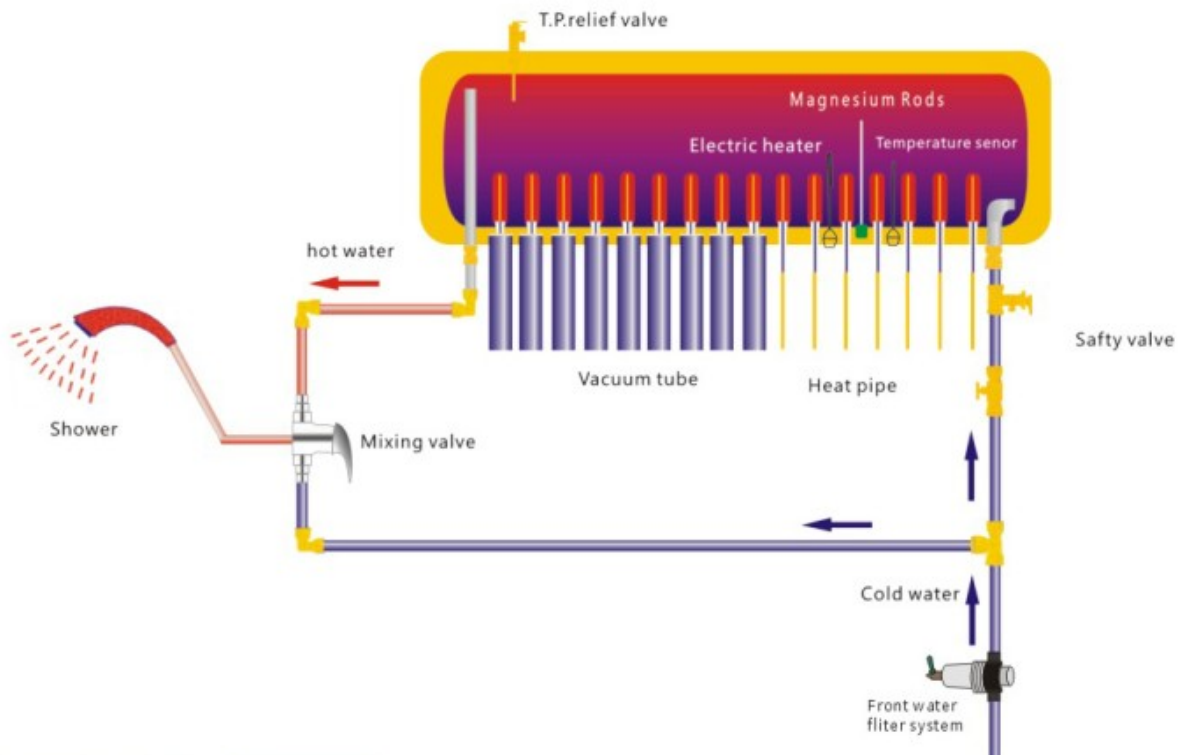
**Parameter table**



Model	vacuum tube			capacity (L)	Area (m2)	size (cm)			weight (Kg)	volume (m <sup>3</sup> )
	diameter (mm)	Length (mm)	Quantity (pcs)			20°	30°	45°		
						A * B * C * D	A * B * C * D	A * B * C * D		
ONS-IP-15	58	1800	15	135	1.91	123*231*206*99	123*231*190*134	123*231*155*179	77.8	0.62
ONS-IP-18	58	1800	18	160	2.29	145*231*206*99	145*231*190*134	145*231*155*179	88.9	0.72
ONS-IP-20	58	1800	20	180	2.55	160*231*206*99	160*231*190*134	160*231*155*179	100.8	0.81
ONS-IP-24	58	1800	24	210	3.06	190*231*206*99	190*231*190*134	190*231*155*179	120	0.91
ONS-IP-30	58	1800	30	260	3.83	235*231*206*99	235*231*190*134	235*231*155*179	141.2	1.1
ONS-IP-36	58	1800	36	300	4.6	280*231*206*99	280*231*190*134	280*231*155*179	160	1.3

## Principles of system and installation method

### 1. Working principle



## 2. Installation method

Flat roof



(1) connection the rear support, front support and cross bracket with screw



(2) install tube support, middle pole and catercorner support



(3) install adjustable tube holder



(4) Insert the bottom of water tank into the hole of frame, then, use the steel to stick it



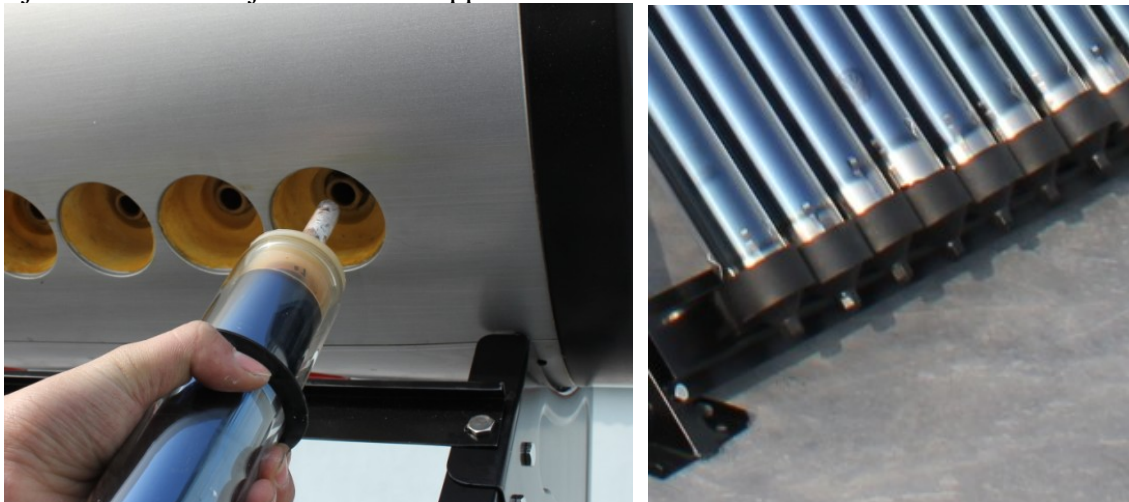
(5) Apply evenly the heat conduction silicate on the condensing side of heat pipe.



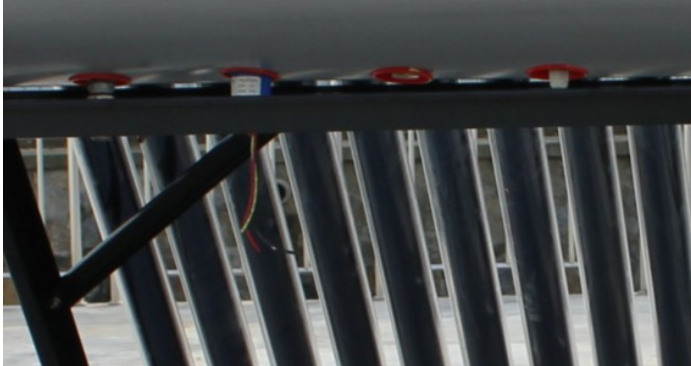
(6) Screw off the adjustable end of adjustable tube support, put the bottom of the vacuum tube into the adjustable tube support.



(7) Insert the condensing side through the blind pipe of the runner blind pipe, tighten the adjustable end of adjustable tube support.



(8) Install safety valve, electrical heating, magnesium rods, sensor and TP valve



(9) The whole system is ok

