

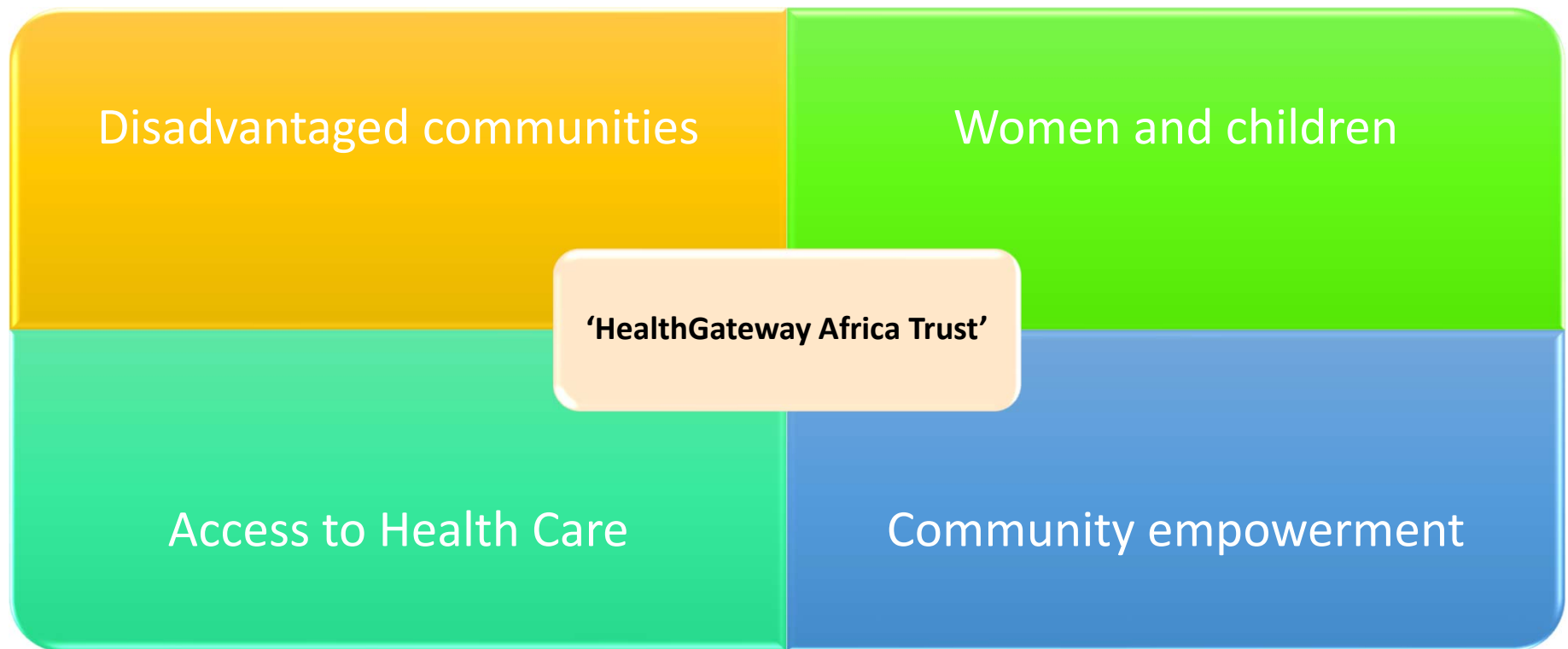


## HEALTH SYSTEMS ASSESSMENT

Mhondoro Ngezi District 2019

# Purpose, Objectives and Program Trajectory

# Purpose, Objectives and Program Trajectory



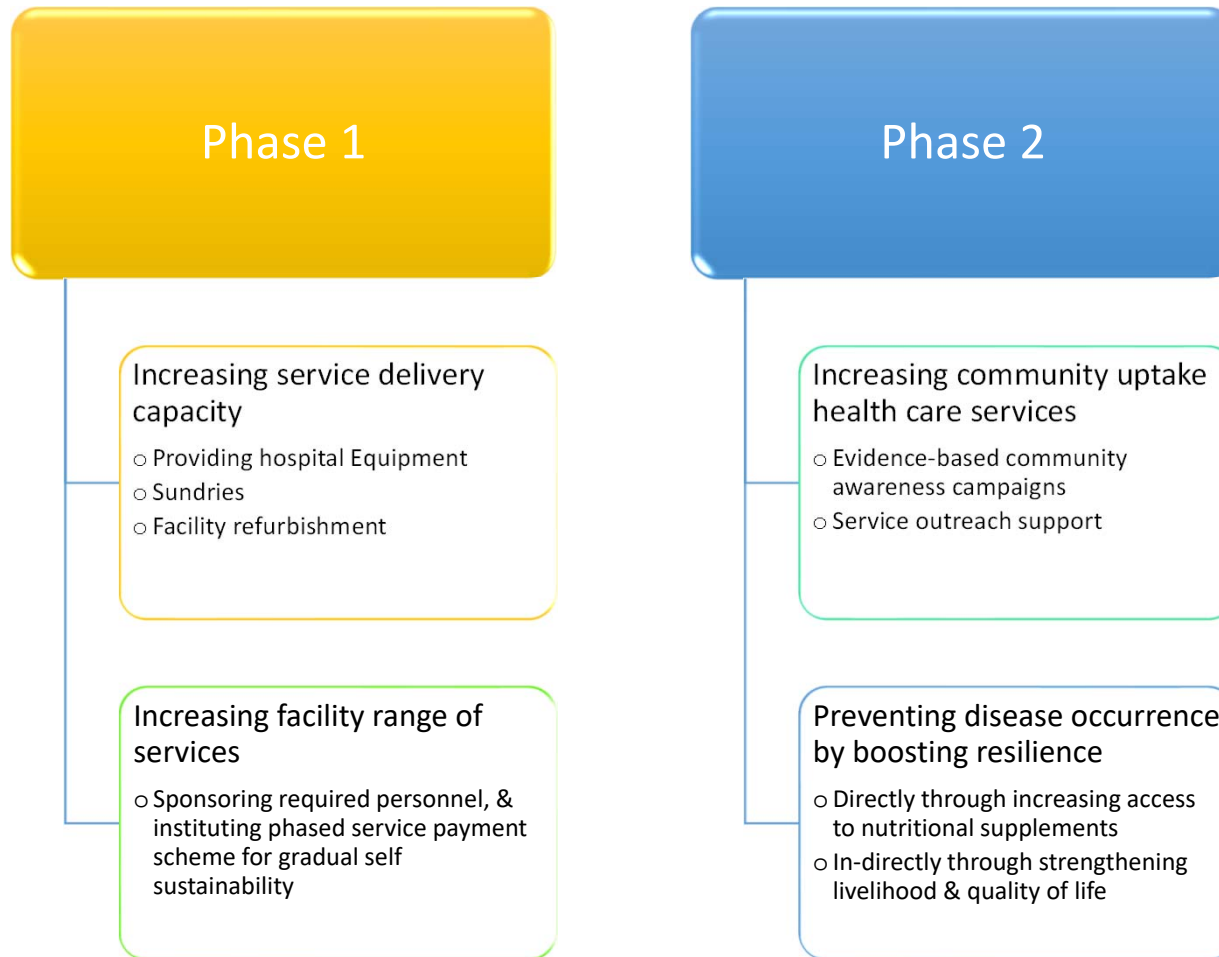
Outcomes?

# Outcomes



# Mhondoro Ngezi Project

# Mhondoro Ngezi Project



Range Of Items Measured



# Range Of Items Measured

In line with phase 1 objectives

Disease

Institutional capacity

Services

Review of  
external  
support  
programmin  
g

prevalence,

severity,

health  
seeking  
behavior

expertise

medication

equipment

affordability

accessibility

FINDINGS: Disease Prevalence and Severity

# FINDINGS: Disease Prevalence and Severity

- Causes stroke
- Organ failure
- Blindness
- Sudden death
- Unhealthy diet
- Excessive alcohol intake

There is no medicine

Life-style condition

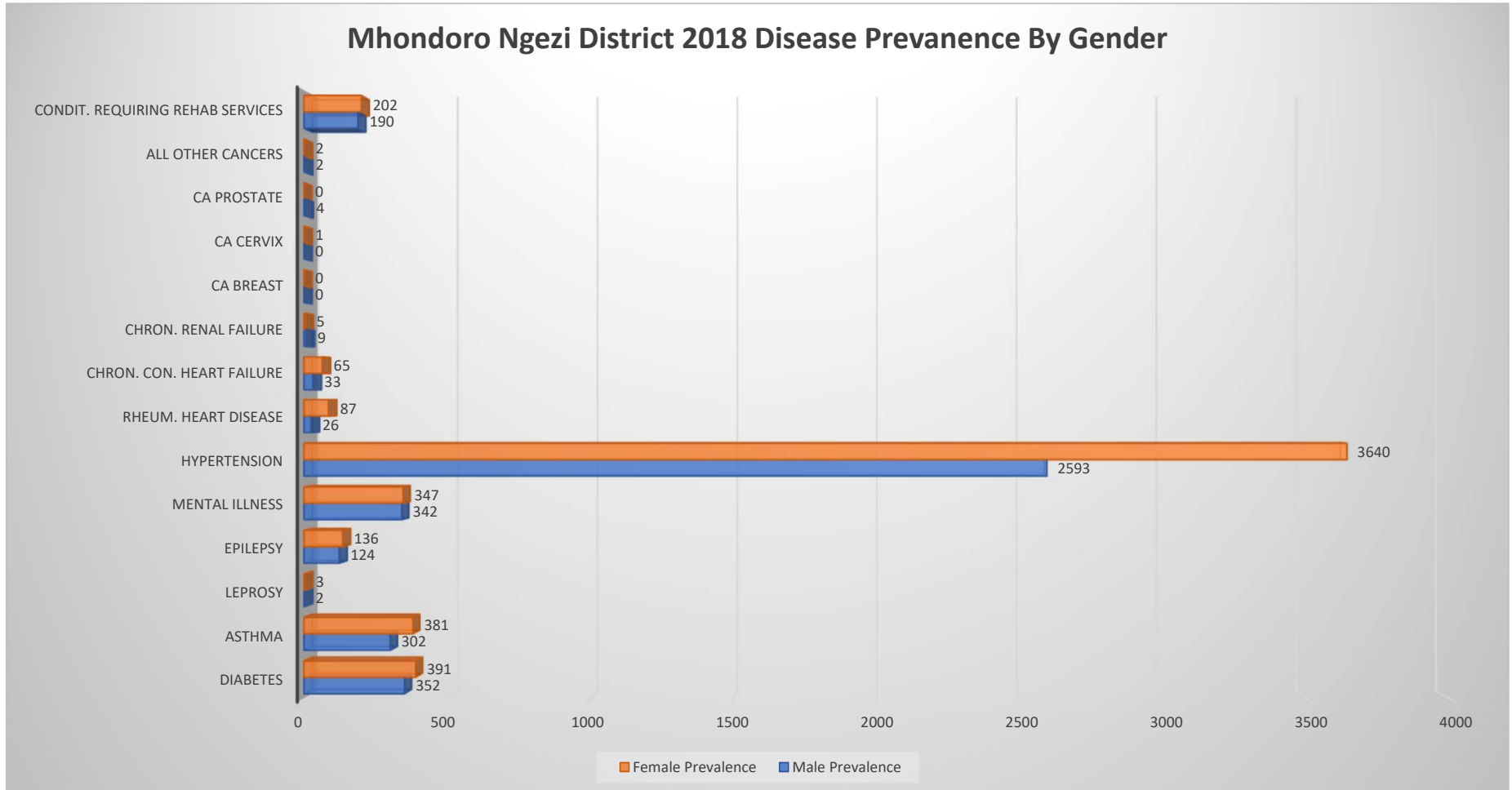
Hypertension (BP) 45 years of age and above

Diabetes

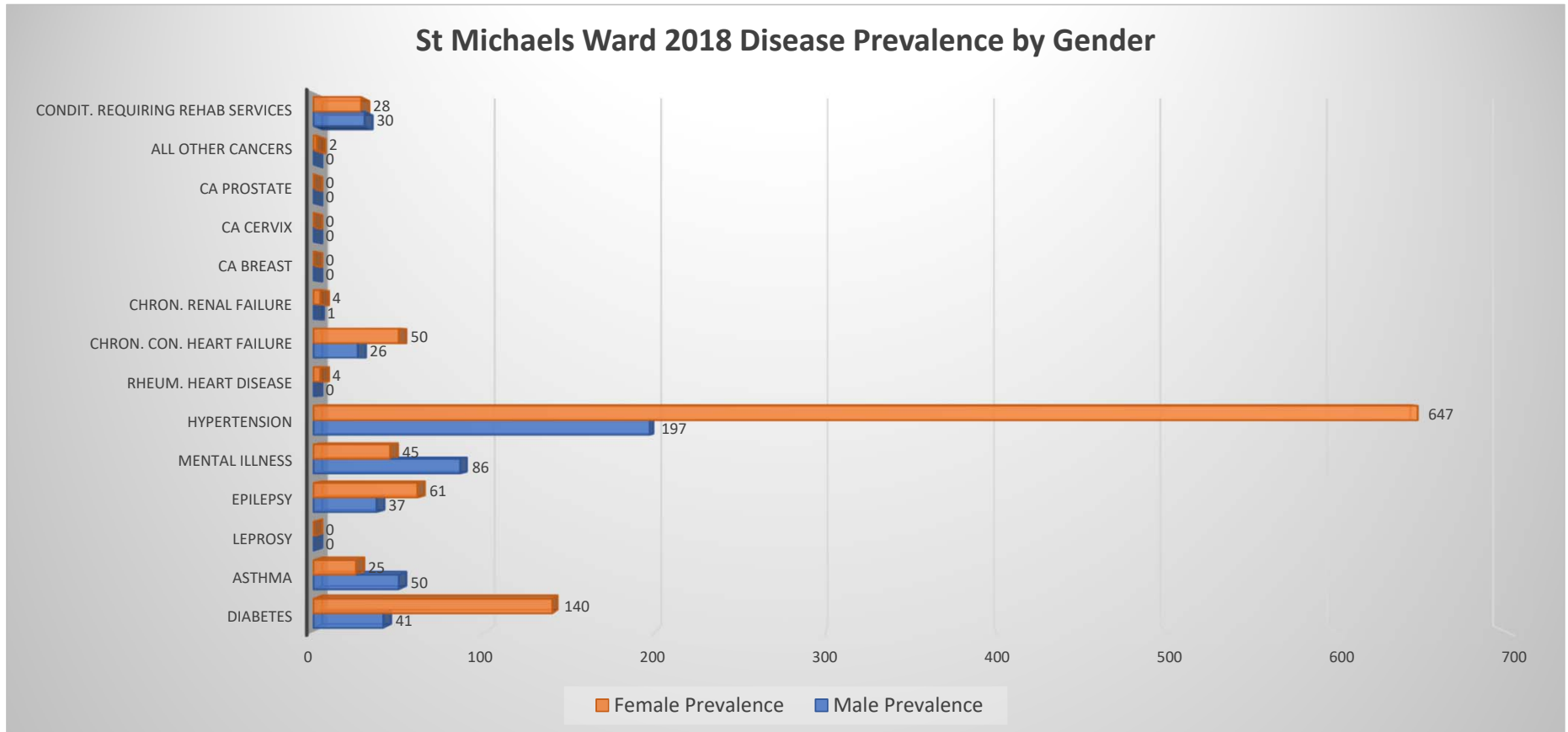
Mental Illness

Asthma

# FINDINGS: Disease Prevalence and Severity



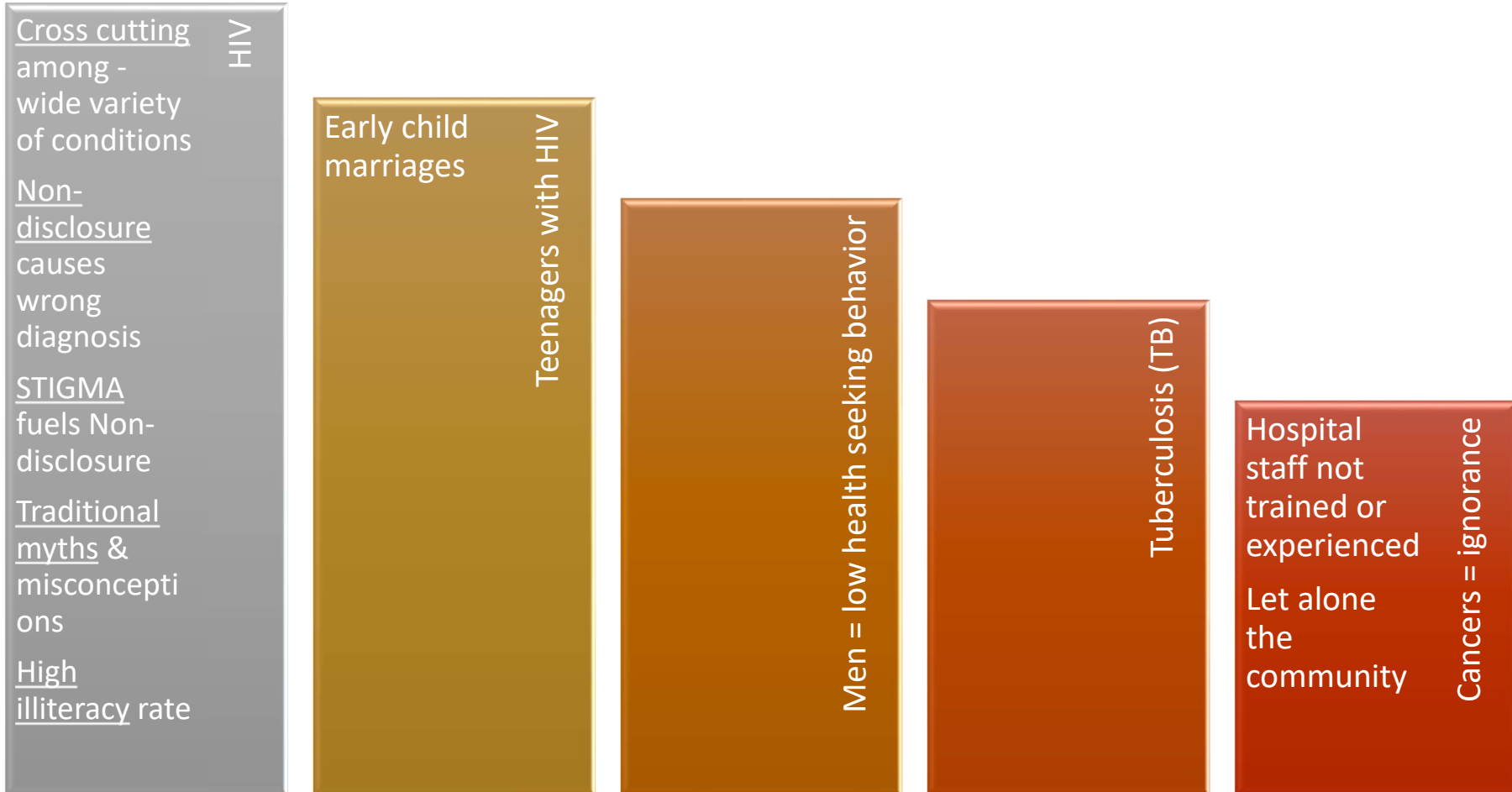
# FINDINGS: Disease Prevalence and Severity



**TABLE 2:** In St Michaels ward 1, women are 3 times more susceptible than men to developing Hypertension and Diabetes.

# Health Seeking Behaviour

# Health Seeking Behaviour



Institutional Expertise, Medication, Equipment  
Capacity



# Expertise

No retention of professional staff

## St Michaels

Theatre professionals

Mental health nurses

Professional counsellors

A single ambulance driver

No dedicated trained security

## Ngezi Hospital

Doctor

Eye surgeon

Dentist

Medication

# Medication

St Michaels Hospital -  
Medication and consumables =  
low supply

Drugs for Hypertension

Mental illness

Epilepsy

Antibiotics in Analgesics

Wound dressing towels

Ngezi Hospital - Medicine and  
consumables in low supply

Includes Hypertension 2<sup>nd</sup> line medication

Oxygen tanks

Resuscitation medication

Facilities, and equipment

- i. No mortuary
- ii. No ambulance
- iii. Need for WIFI to improve communication

Results Based Financing (RBF) resources inadequate.

Equipment

# Equipment

## Technical Equipment

**Increasing Capacity via Equipment**

**Reducing Workload via Prevention activities:** To reduce and eventually eliminate targeted ailments (group-counselling sessions)

## Non-technical Equipment

**Clients:** To improve client's quality of life increasing chances of improved well-being.

**Providers:** To improve provider working conditions, effectiveness and staff retention.

St Michaels and Ngezi hospitals under capacitated  
General infrastructure not conducive for hospital operations

# Equipment

## St Michaels Hospital

### Gadgets

- a. BP/ Hypertension assessment machines
- b. Diabetes machines (re-usable)

### Equipment

- a. No IT equipment and staff also not trained for ICT (at least 10 computers required)
- b. Physiotherapy training machines
- c. Medicine trolleys (at least 6 needed)
- d. Surgical trolleys (at least 10 needed)
- e. Kitchen ware needed
- f. Chairs for staff and clients
- g. Sundries – of the 60 hospital beds, most of them are obsolete; 104 lockers old and rusty – used since 1984

### Facilities and Infrastructure

- a. Water supply pipe system needs to be changed from galvanized to PVC to stop water calcifying.
- b. Back-up borehole urgently required
- c. Sluice room needs refabricating

## Ngezi Hospital

### Gadgets

- a. BP machines

### Equipment

- a. Scales to weigh children & adults
- b. Photocopier not working
- c. Beds old and malformed – blankets and mattresses tattered and torn
- d. Cleaning equipment (mop with bucket and rollers)
- e. Curtains
- f. Washing machine not working
- g. Generator not working
- h. Fridges not working
- i. Hospital has no ambulance
- j. Sluicing Expecting mothers have no stove

### Facilities and Infrastructure

- Sluice room needs refabricating

# Services Affordability and Facility Accessibility

# Services Affordability and Facility Accessibility

## Results-Based Financing (RBFs)

Resource allocation

Performance management

Performance-based reward

### Effect core outputs

Deliveries

Consultations

Immunization

### Allocation structure

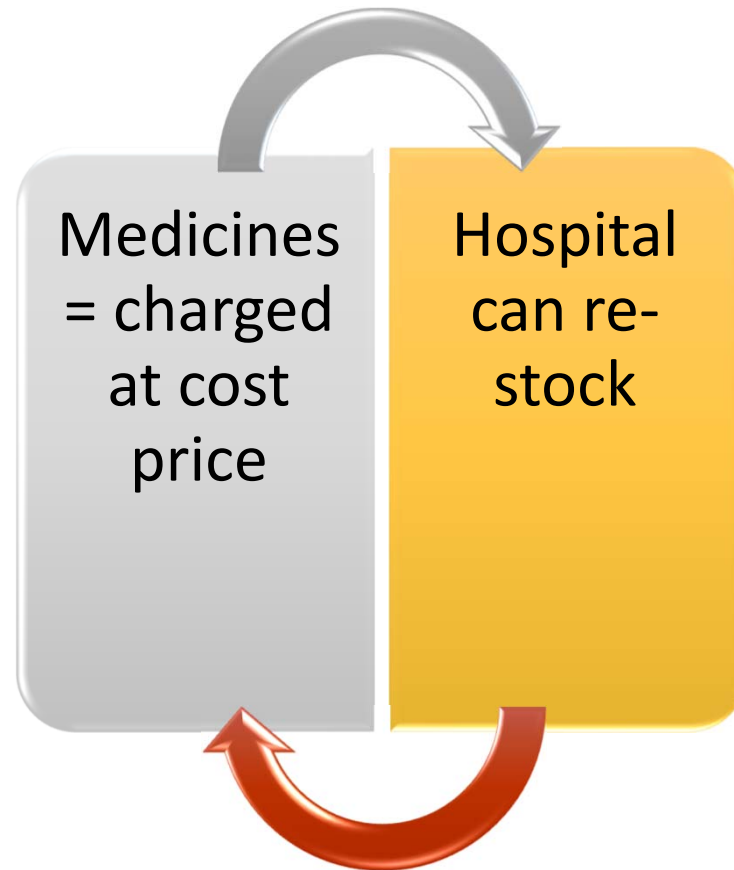
75% of RBF = hospital demands

25% = staff incentives

Allocation differ with institution



# AFFORDABILITY: St Michaels Mission Hospital



# AFFORDABILITY: St Michaels Mission Hospital

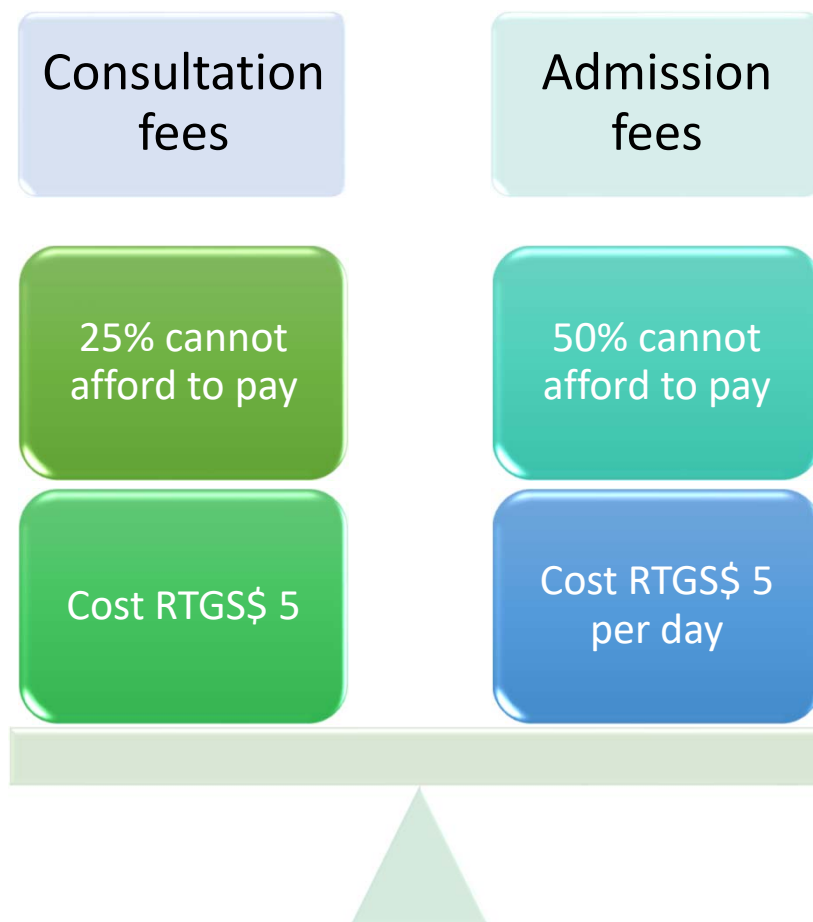


Introduction of  
RBFs



Hospital's capacity  
reduced to by half

# AFFORDABILITY: St Michaels Mission Hospital

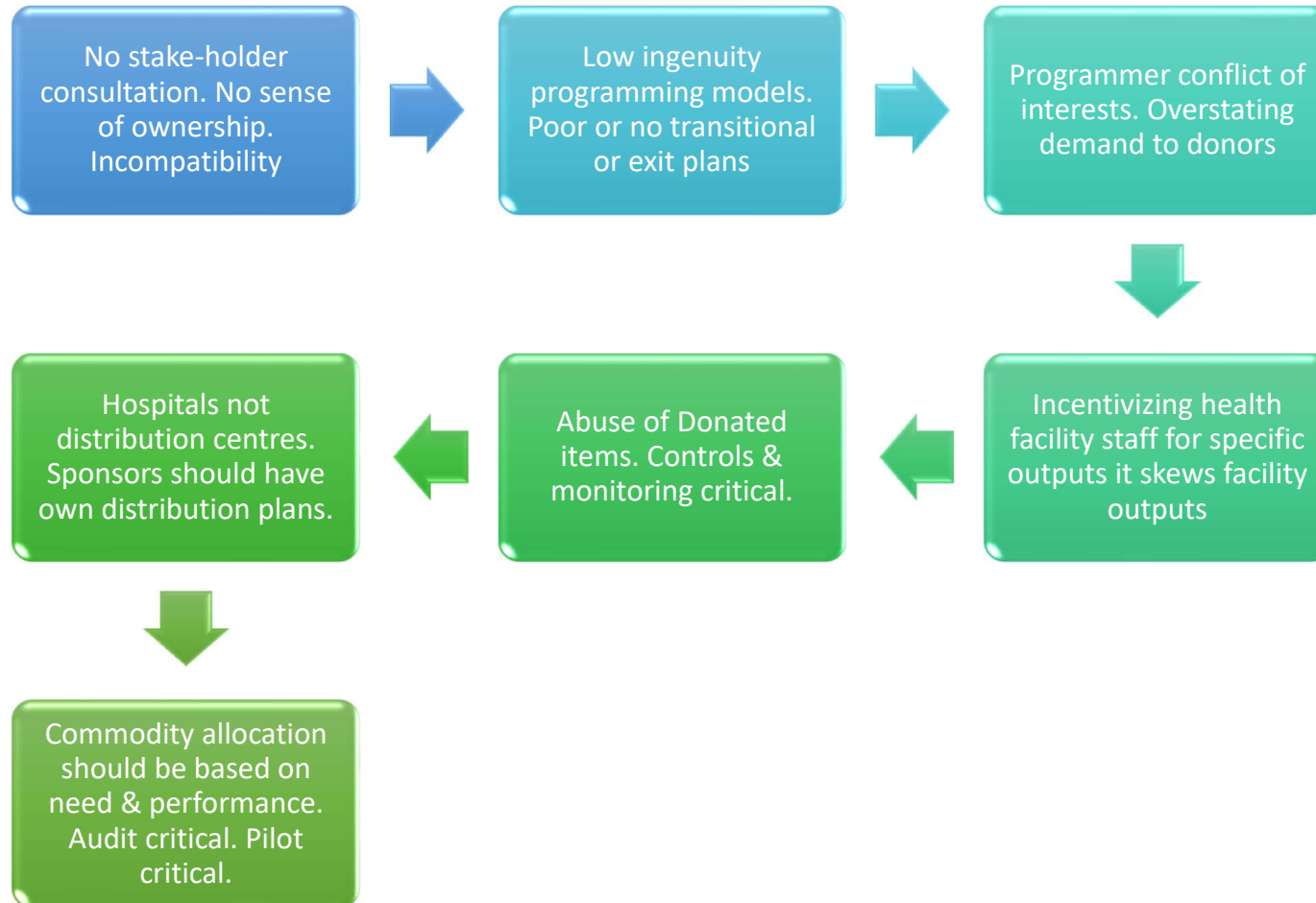


# AFFORDABILITY: Ngezi Hospital



# Review of External Support Programing

# Review of External Support Programing



*Lets chat...*

