



**Hyperbaric Consult A/S**

Havnen 5/1  
3250 Gilleleje  
Denmark

info@hbc-tec.dk  
www.hbc-tec.dk  
+45 70 23 16 47

**Hyperbaric Consult A/S** is a dynamic company with broad and diverse experience within the field of ROV & diving support for offshore construction, hyperbaric management, underwater and topside engineering and inspection.

**HBC** has participated in several different wind farm projects in Europe and is a very experienced company within all subsea aspects of wind farm development, IMR (Inspection, maintenance and repair) and NDT testing.



• Diving support • ROV support • Inspection, Repair & Maintenance

• Surveying • Repair & Maintenance • Trenching

• Cargo transport (fuel, oil or freshwater)

## The ship

The DP1 ROV & Diving Support Vessel "HBC Achiever" is a 36 meter long, four-point mooring vessel built in 2014 based on our experience and according with specific requirements of HBC. She has been specifically set up and equipped for providing diving support for offshore construction, Inspection, Repair and Maintenance.

## The work

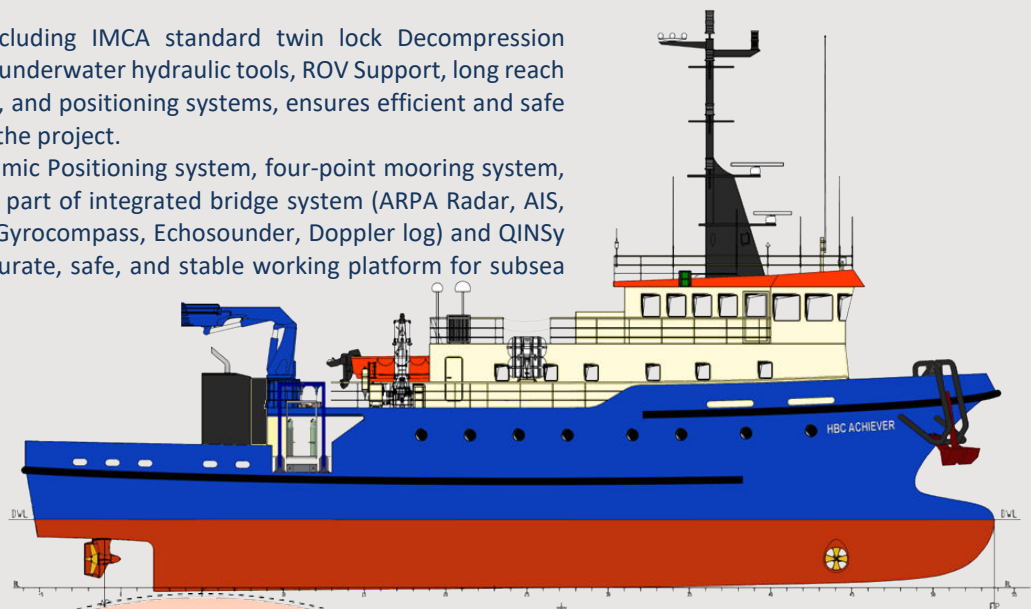
"HBC Achiever" is capable of conducting offshore surveys, trenching and conducting ROV operations. "HBC Achiever" has wide experience in offshore construction and maintenance. The capability of "HBC Achiever's" services can additionally be extended to include transporting fuel, oil, freshwater, general cargo and personnel.

## The system

Modern diving systems including IMCA standard twin lock Decompression Chamber along with professional underwater hydraulic tools, ROV Support, long reach crane, subsea tracking, surveying, and positioning systems, ensures efficient and safe operations during completion of the project.

"HBC Achiever" uses a Dynamic Positioning system, four-point mooring system, ECDIS Wartsila (Transas) 4000 as part of integrated bridge system (ARPA Radar, AIS, ECDIS, DGPS, Navtex, Autopilot, Gyrocompass, Echosounder, Doppler log) and QINSy Survey System to provide an accurate, safe, and stable working platform for subsea projects.

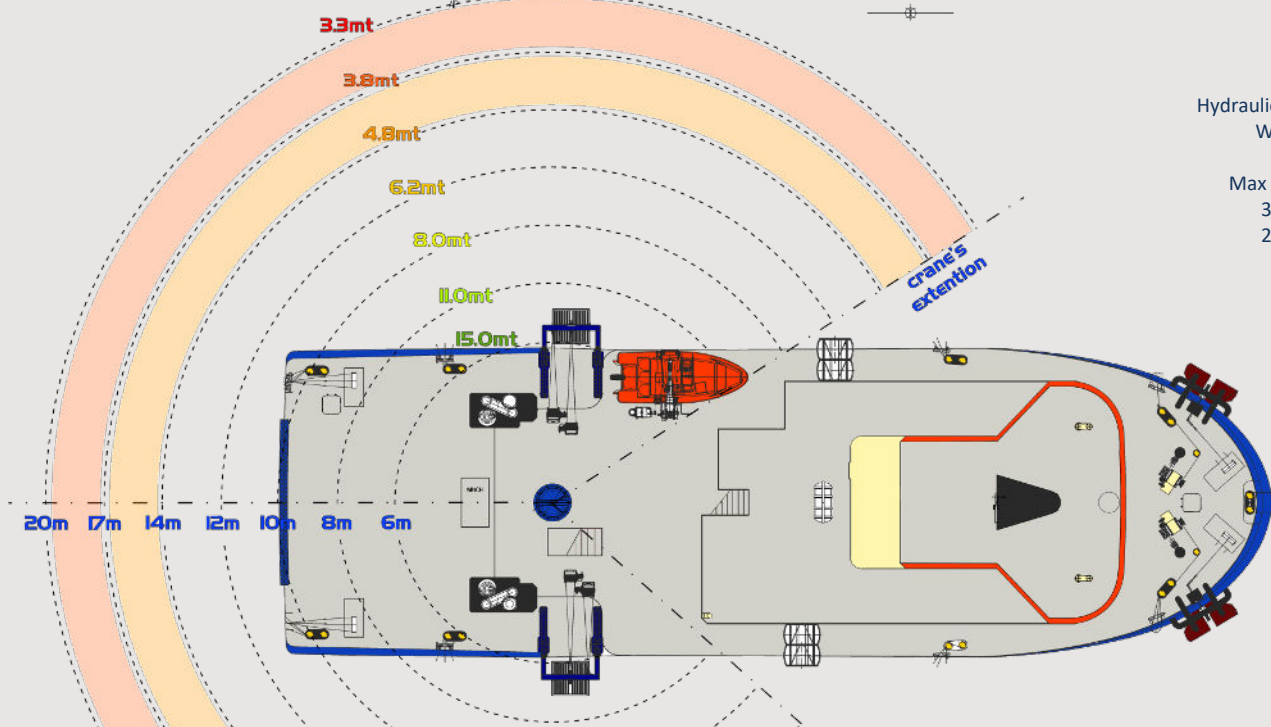
With the use of Sonardyne transducer system connected with ship in DP mode – the ship can track a target (diver, ROV or other) with precision of less than one meter.



### DECK CRANE

Hydraulic knuckle boom  
Wire length 60 m

Max reach and load:  
3,3 mt @ 19,5 m  
23,0 mt @ 4,2 m



**GENERAL SPECIFICATIONS**

Classification	ROV & Diving Support Vessel DP1
Flag State Authority	Danish International Ship Register
Port of Registry	Gilleleje
Classification Authority	RINA
IMO Number	9647978
Call Sign	OWMH2

**MAIN PARTICULARS**

Overall Length	35,99 m
Beam	11,44 m
Summer Draught	3,092 m
Air draft	12,9 m
Gross Tonnage	487 GT
Net Tonnage	146 NT

**ENGINE POWER & PROPULSION**

Engine	2x 331 kW
Generator	3x 180 kW /225 kVA
Bow Thruster	1x Schottel STT110FP 150kW
Rudderpropellers	2x Azimuth Thrusters: Schottel SRP 200, 280-410 kW

**SPEED**

Economical Speed	8,5 knots
Full Speed	10,5 knots

**CONSUMPTION**

In port	0,25 m3 / 24 hrs
Transit	4 m3 / 24 hrs
DP mode maneuvering	3 m3 / 24 hrs
Diving operations	0,5 m3 / 24 hrs

**TANK CAPACITIES (100%)**

Fuel Oil	70,0 m <sup>3</sup>
Fresh Water	48,0 m <sup>3</sup>

**CARGO DECK**

Main Deck Area	80 m <sup>2</sup>
Upper Deck Area	28 m <sup>2</sup>
Bridge Deck Area	38 m <sup>2</sup>

**DECK CRANE**

Type	Hydraulic knuckle boom
Wire length	60 m
Main Crane max reach and load:	3,3 mt @ 19,5 m
	23,0 mt @ 4,2 m

**IMCA**

CMID	M 149 & M 189 compliant
Diving Services and Systems	compliant

**PERSONNEL**

Crew	9 pers
Project team	23 pers

**DIVE SYSTEM**

Fully integrated 3 diver panel with multiple redundancies	
Twin lock IMCA standard Decompression Chamber	
Nitrox compressor for on-site production	Bauer B-TROX
Hot water system	2x Aquila HB254
Diving Launch and Recovery	2x LARS diving basket
Diver hydraulic and pneumatic tool station	
Full CSWIP inspection capabilities	
Coded welding and burning facilities	

**SURVEY SYSTEM**

QINSy

**ROV**

SAAB Seaeye Cougar XTi

**NAVIGATION AIDS**

Fully Integrated Bridge System:	Navi-Sailor 4000 Dual ECDIS
	Multi-purpose display system
Radar ARPA	2x Transas Navi-Radar 4000 X-band 3 cm
AIS	Class-A, JRC JHS-183
Autopilot	Navis AP4000
Gyrocompass	GC-80 Simrad
DGPS	JRC JLR-31
Echosounder	JRC JFE-380-25 50/200kHz
Navtex	JRC NCR-333
Speed log	Doppler log system, JRC JLN-205

**DYNAMIC POSITIONING SYSTEMS**

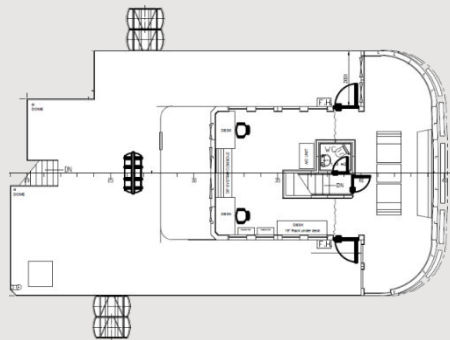
DP System	DP1 Navis NavDP 4000
ROV following mode with HPR interface	

**DP INTERFACES AND SENSORS**

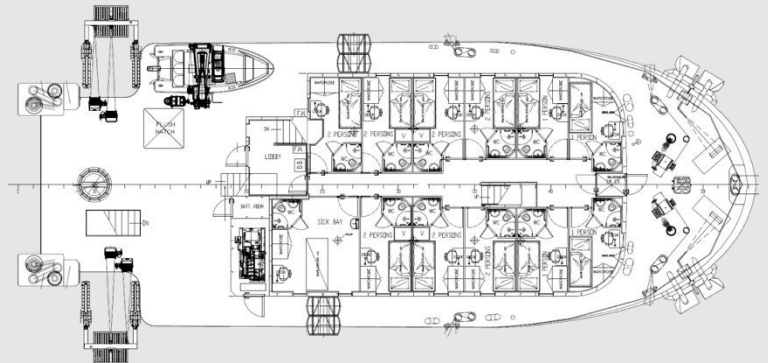
DGPS and GPS Satellite Compass	x2
Gyrocompass	x1
VRU/MRU	x2
Thruster and propulsion interface	x4
Wind sensor	x2
Hydrostatic Pos.Ref. (HPR) <Sonardyne Ranger 2>	x1

**COMMUNICATION SYSTEMS**

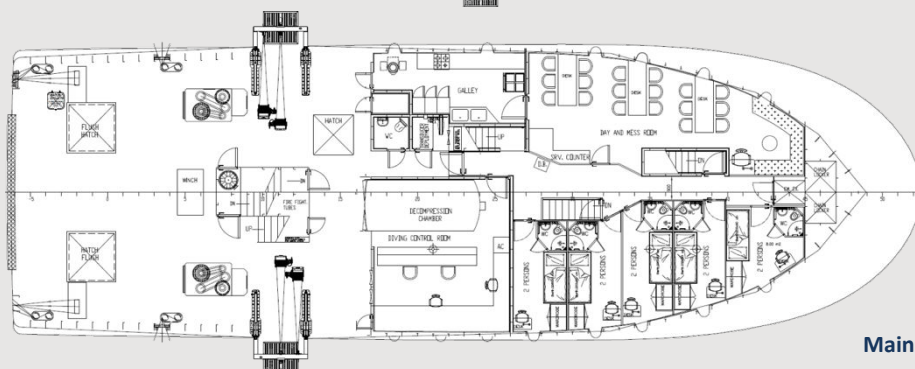
Satellite Internet	Mobile Priority Starlink
GSM Internet (5G)	Sputnik GSM enhancer
Marine Satellite Phone	LT-3100 Iridium
Marine Satellite VoIP Phone (DK)	Navteam
VHF DSC	Sailor 6220
VHF RT	x3 Sailor 6248
MF/HFSSB RT	Sailor 6310
UHF	x4 Icom IC-2820E



Bridge deck



Upper Deck



Main Deck