



Hyperbaric Consult A/S

Havnen 5/1
3250 Gilleleje
Denmark

info@hbc-tec.dk
www.hbc-tec.dk
+45 70 23 16 47

Hyperbaric Consult Ltd.

The Adelphi Mill,
Grimshaw Lane, Bollington
Cheshire, SK105JB
United Kingdom

info@hbc-tec.co.uk
www.hbc-tec.co.uk
+45 70 23 16 47



HBC Group is a dynamic group with broad and diverse experience within the field of diving support for offshore construction, hyperbaric management, underwater and topside engineering and inspection.

HBC has participated in several different wind farm projects in Europe and is a very experienced company within all subsea aspects of wind farm development, IMR (Inspection, maintenance and repair) and NDT testing.

The Diving System

Modern diving systems including IMCA standard twin lock Decompression Chamber along with professional underwater hydraulic tools, ROV Support, long reach crane, subsea tracking and surveying, ensures efficient and safe operations during completion of the project.

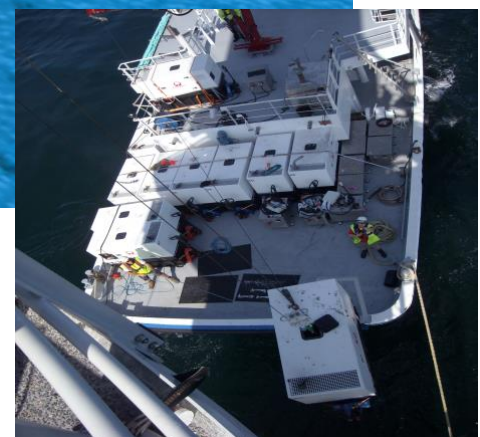
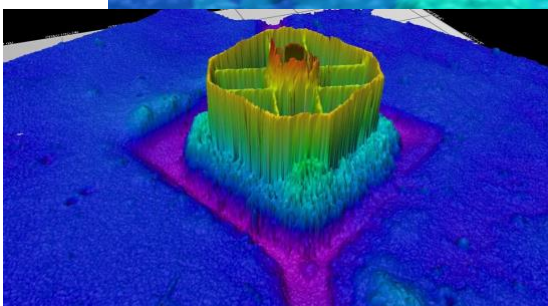
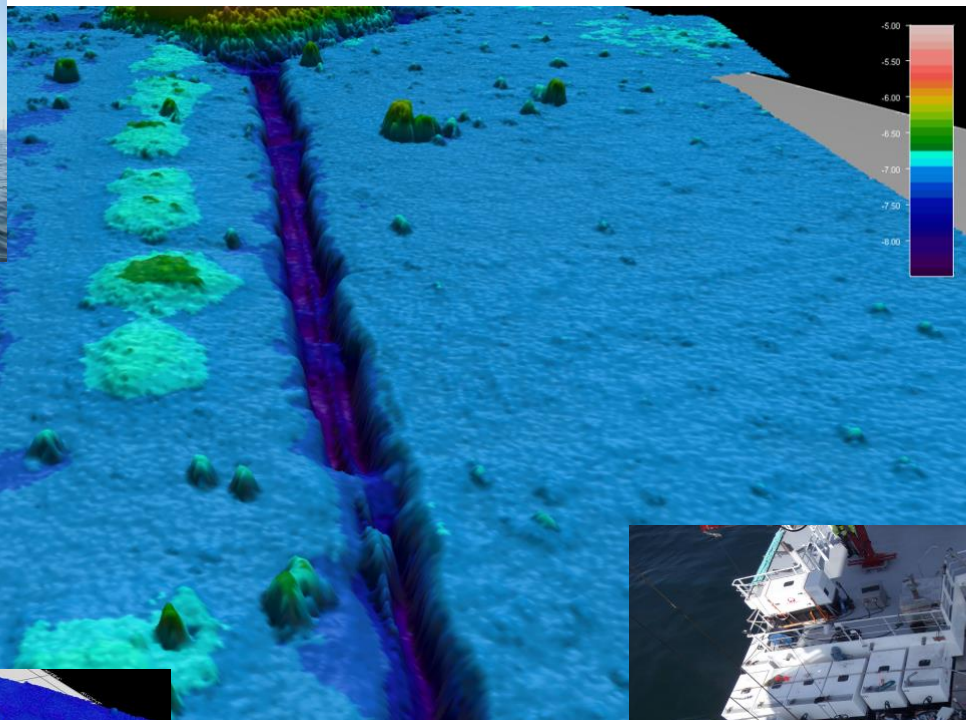
HBC SUPPORTER uses four-point mooring system, MaxSea chart plotter, ARPA Radar, AIS, DGPS, Autopilot, Echo sounder and QINSy Survey System to provide an accurate, safe and stable working platform for subsea projects. HBC SUPPORTER offers diving to a maximum depth of 50 meters. Substantial bottom times can also be achieved at this depth using the latest equipment available in the industry.



The work

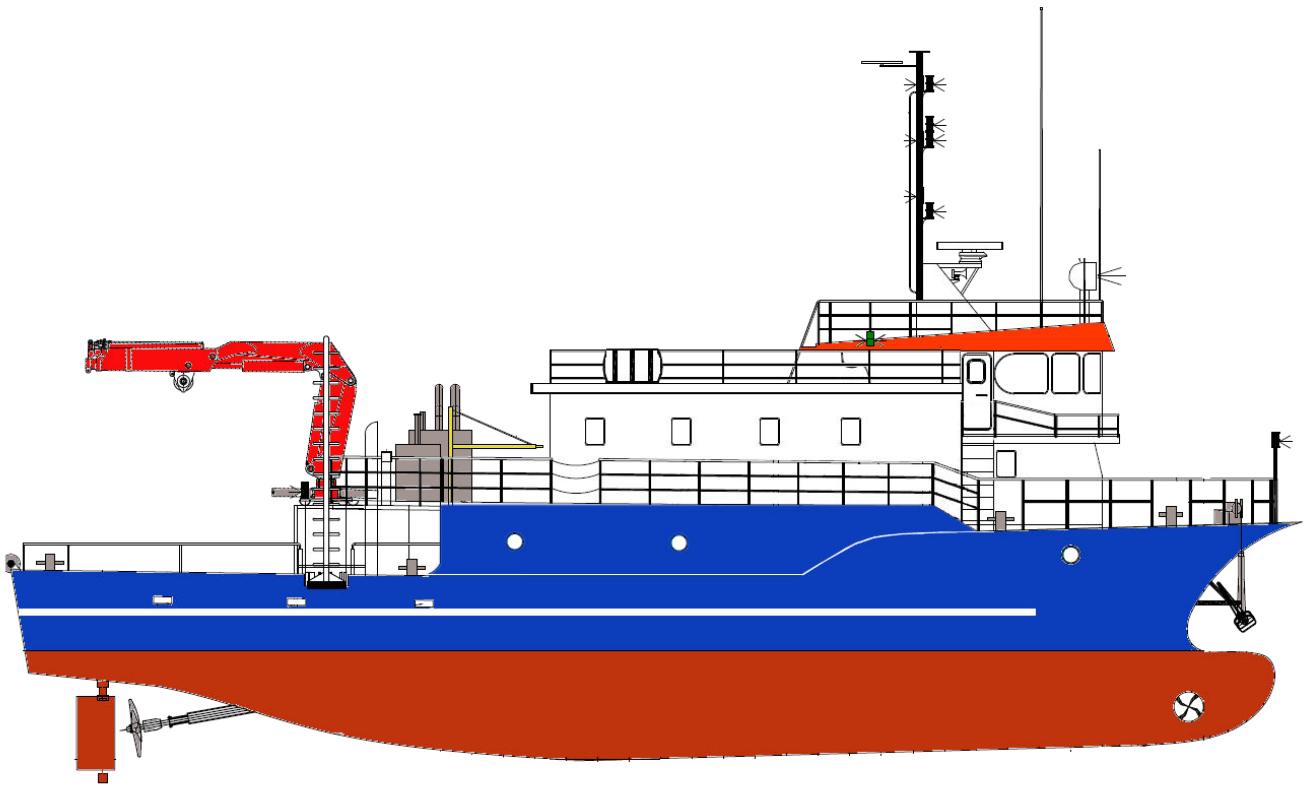
HBC SUPPORTER is capable of conducting offshore surveys, trenching and conducting ROV operations. The vessel has wide experience in offshore construction and maintenance. The capability of HBC SUPPORTER's services can additionally be extended to include transporting fuel, oil, freshwater, general cargo and personnel. The vessel is also capable of deploying and recovering wave buoys, cardinal buoys, recovery of field debris and markers.

HBC SUPPORTER has been used as a service vessel and diving platform during inspection campaigns on majority of the UK and European windfarms. HBC SUPPORTER has fueled, serviced and maintained the generators used during the construction phase on various windfarms. Once the generators were no longer required, HBC removed them from each location at a cost-effective solution.



The ship

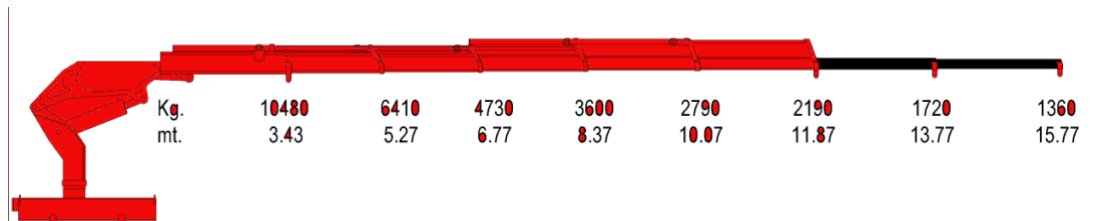
Diving Support Vessel HBC SUPPORTER is a 25-meter long, four point mooring vessel built in 2008. She has been specifically set up and equipped for providing diving support for offshore construction, Inspection, Repair and Maintenance



DECK CRANE

Hydraulic knuckle boom
Wire length 60 m

Max reach and load:
1,4 mt @ 15,8 m
10,5 mt @ 3,4 m



- Diving support ● ROV support ● Inspection
- Repair & Maintenance ● Survey ● Offshore support
- Cargo transport (fuel, oil or fresh water) ● Guard Vessel

HBC SUPPORTER has the ability to deliver 30 m3 of fuel offshore for refueling generators

GENERAL SPECIFICATIONS

| | |
|--------------------------|-----------------------|
| Type | Diving Support Vessel |
| Flag State Authority | Denmark |
| Port of Registry | Gilleleje |
| Classification Authority | RINA |
| IMO Number | 8741325 |
| Call Sign | OUBZ2 |

MAIN PARTICULARS

| | |
|----------------|---------|
| Overall Length | 28,65 m |
| Beam | 9,27 m |
| Summer Draught | 2,47 m |
| Air Draught | 13,30 m |
| Gross Tonnage | 264 GT |
| Net Tonnage | 79 NT |

ENGINE POWER & PROPULSION

| | |
|--------------|--------|
| Engine 1 | 381 kW |
| Engine 2 | 368 kW |
| Generator 1 | 89 kW |
| Generator 2 | 89 kW |
| Bow Thruster | 90 kW |

SPEED

| | |
|------------------|----------|
| Economical Speed | 10 knots |
| Full Speed | 12 knots |

CONSUMPTION

| | |
|-----------------------------|-----------------|
| In port | 0,1 m3 / 24 hrs |
| Transit & diving operations | 1,5 m3 / 24 hrs |

TANK CAPACITIES (100%)

| | |
|-------------|---------------------|
| Fuel Oil | 38,0 m ³ |
| Fresh Water | 33,9 m ³ |

CARGO DECK

| | |
|------------------|-------------------|
| Main Deck Area | 80 m ² |
| Upper Deck Area | 8 m ² |
| Bridge Deck Area | 58 m ² |

DECK CRANE

| | |
|--------------------------------|------------------------------------|
| Type | Hydraulic knuckle boom |
| Wire length | 60 m |
| Main Crane max reach and load: | 1,4 mt @ 15,8 m 10,5 mt @ 3,4 m |

PERSONNEL

| | |
|--------------|--------|
| Crew | 4 pers |
| Project team | 9 pers |

DIVE SYSTEM

IMCA D023 Dive system in palace
Twin lock dive chamber on board
Diving depths up to 50m

SURVEY SYSTEM

QINSy

ROV

Ocean Module

NAVIGATION AIDS

Furuno Integrated Navigation System:

| | |
|-------------|--------------------------------------|
| ECS Map | TimeZero professional |
| Radar ARPA | Furuno NavNet |
| AIS | Furuno AIS FA-150 |
| GPS/Compass | Furuno Satellite compass SC-50 |
| GPS | FURUNO 0175 |
| Auto pilot | Navtron NT 921 Mk 2 |
| Echosounder | JRC 7FC-130/130HP |
| Windmeter | Windex System - Clipper |
| Crew Finder | MOB Precision Direction Finder RT202 |

COMMUNICATION SYSTEMS

| | |
|------------------------|------------------------|
| Satellite Internet | Starlink Mobile |
| GSM Internet (5G) | Sputnik GSM |
| Marine Satellite Phone | LT-3100 Iridium |
| VHF Sailor | RT5022 DSC short range |
| VHF ICOM | IC-M505 |
| UHF Motorola | CM140 |

IMCA

| | |
|-----------------------------|-------------------------|
| CMID | M 149 & M 189 compliant |
| Diving Services and Systems | compliant |