



### Hyperbaric Consult A/S

Havnen 5/1  
3250 Gilleleje  
Denmark

info@hbc-tec.dk  
www.hbc-tec.dk  
+45 70 23 16 47

### Hyperbaric Consult Ltd.

The Adelphi Mill,  
Grimshaw Lane, Bollington  
Cheshire, SK105JB  
United Kingdom

info@hbc-tec.co.uk  
www.hbc-tec.co.uk  
+45 70 23 16 47



**HBC Group** is a dynamic group with broad and diverse experience within the field of diving support for offshore construction, hyperbaric management, underwater and topside engineering and inspection.

HBC has participated in several different wind farm projects in Europe and is a very experienced company within all subsea aspects of wind farm development, IMR (Inspection, maintenance and repair) and NDT testing.

### The Diving System

Modern diving systems including IMCA standard twin lock Decompression Chamber along with professional underwater hydraulic tools, ROV Support, long reach crane, subsea tracking and surveying, ensures efficient and safe operations during completion of the project.

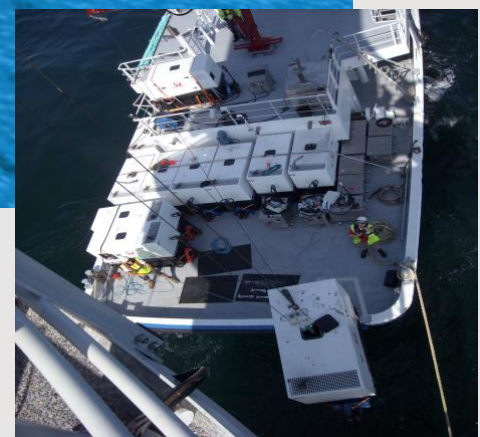
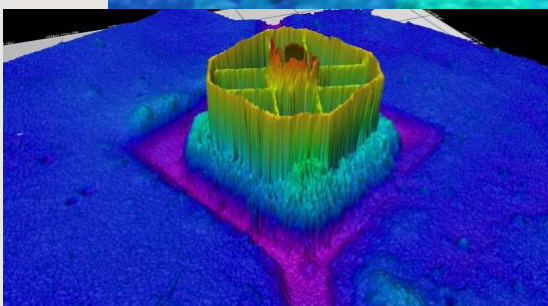
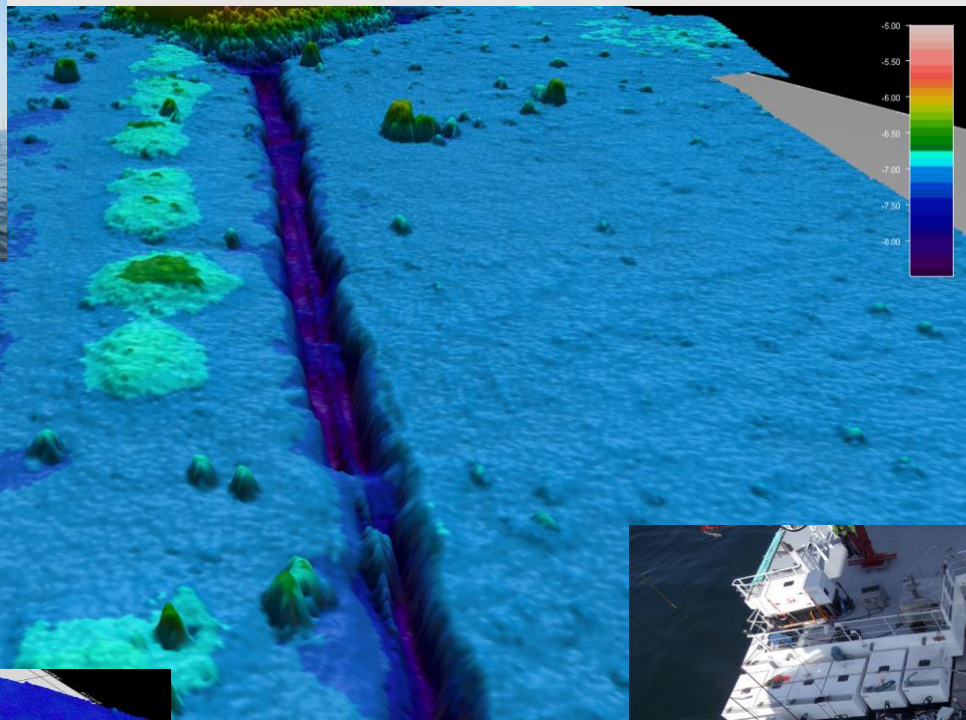
HBC SUPPORTER uses four-point mooring system, MaxSea chart plotter, ARPA Radar, AIS, DGPS, Autopilot, Echo sounder and QINSy Survey System to provide an accurate, safe and stable working platform for subsea projects. HBC SUPPORTER offers diving to a maximum depth of 50 meters. Substantial bottom times can also be achieved at this depth using the latest equipment available in the industry.



### The work

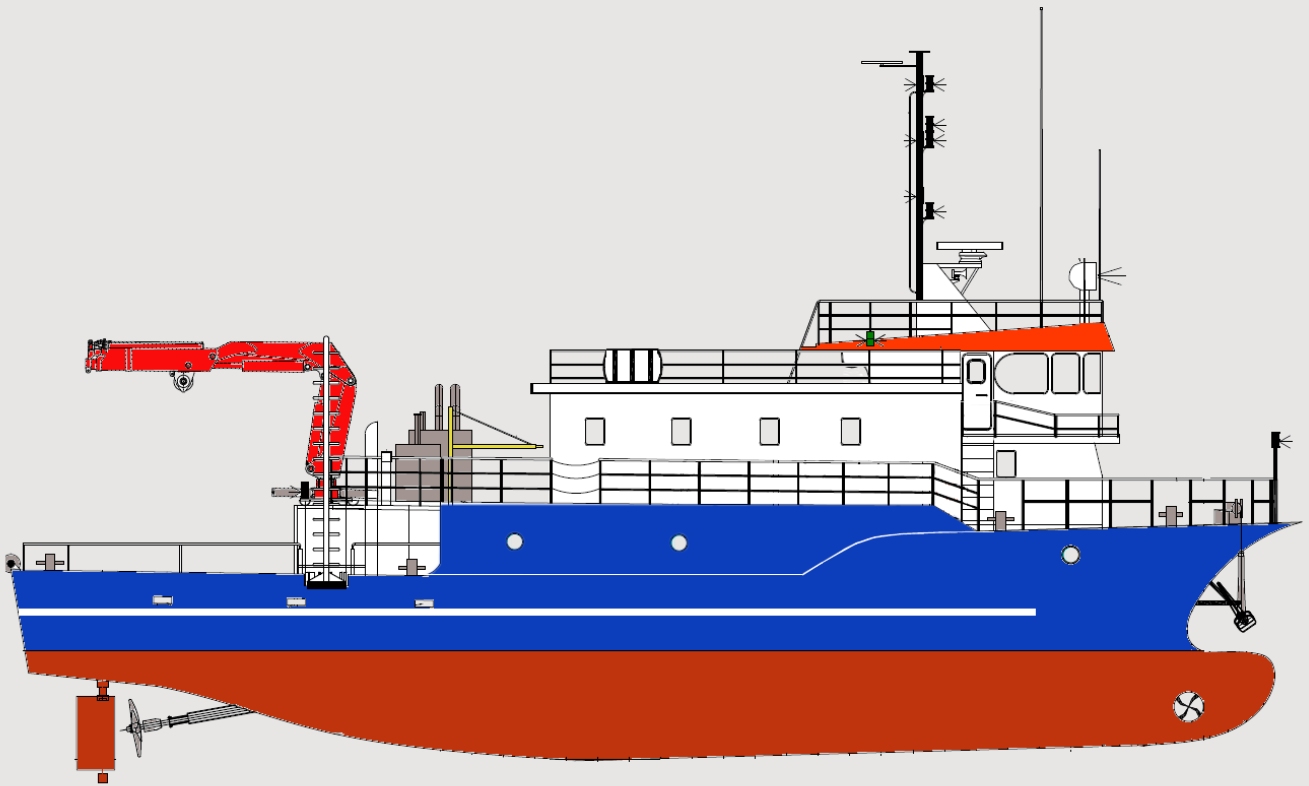
HBC SUPPORTER is capable of conducting offshore surveys, trenching and conducting ROV operations. The vessel has wide experience in offshore construction and maintenance. The capability of HBC SUPPORTER's services can additionally be extended to include transporting fuel, oil, freshwater, general cargo and personnel. The vessel is also capable of deploying and recovering wave buoys, cardinal buoys, recovery of field debris and markers.

HBC SUPPORTER has been used as a service vessel and diving platform during inspection campaigns on majority of the UK and European windfarms. HBC SUPPORTER has fueled, serviced and maintained the generators used during the construction phase on various windfarms. Once the generators were no longer required, HBC removed them from each location at a cost-effective solution.



## The ship

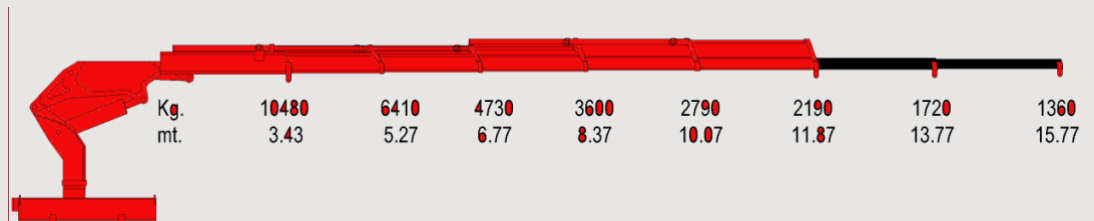
Diving Support Vessel HBC SUPPORTER is a 25-meter long, four point mooring vessel built in 2008. She has been specifically set up and equipped for providing diving support for offshore construction, Inspection, Repair and Maintenance



### DECK CRANE

Hydraulic knuckle boom  
Wire length 60 m

Max reach and load:  
1,4 mt @ 15,8 m  
10,5 mt @ 3,4 m



- Diving support • ROV support • Inspection
- Repair & Maintenance • Survey • Offshore support
- Cargo transport (fuel, oil or fresh water) • Guard Vessel

HBC SUPPORTER has the ability to deliver 30 m3 of fuel offshore for refueling generators



DANISH WIND  
INDUSTRY ASSOCIATION

ISO 9001  
Management System Certification  
BUREAU VERITAS  
Certification Denmark A/S



**GENERAL SPECIFICATIONS**

Classification	Diving Support Vessel
Flag State Authority	IMMARBE
Port of Registry	Belize City
Classification Authority	IBS
IMO Number	8741325
Call Sign	V3NA4

**MAIN PARTICULARS**

Overall Length	28,65 m
Beam	9,27 m
Summer Draught	2,47 m
Air Draught	13,30 m
Gross Tonnage	264 GT
Net Tonnage	79 NT

**ENGINE POWER & PROPULSION**

Engine 1	381 kW
Engine 2	368 kW
Generator 1	47 kW
Generator 2	24 kW
Bow Thruster	90 kW

**SPEED**

Economical Speed	10 knots
Full Speed	12 knots

**CONSUMPTION**

In port	0,1 m <sup>3</sup> / 24 hrs
Transit & diving operations	1,5 m <sup>3</sup> / 24 hrs

**TANK CAPACITIES (100%)**

Fuel Oil	38,0 m <sup>3</sup>
Fresh Water	33,9 m <sup>3</sup>

**CARGO DECK**

Main Deck Area	80 m <sup>2</sup>
Upper Deck Area	8 m <sup>2</sup>
Bridge Deck Area	58 m <sup>2</sup>

**DECK CRANE**

Type	Hydraulic knuckle boom
Wire length	60 m
Main Crane max reach and load:	1,4 mt @ 15,8 m 10,5 mt @ 3,4 m

**PERSONNEL**

Crew	4 pers
Project team	10 pers

**DIVE SYSTEM**

IMCA D023 Dive system in palace  
Twin lock dive chamber on board  
Diving depths up to 50m

**SURVEY SYSTEM**

QINSy

**ROV**

Ocean Module

**NAVIGATION AIDS**

Furuno Integrated Navigation System:

ECS Map	TimeZero professional
Radar ARPA	Furuno NavNet
AIS	Furuno AIS FA-150
GPS/Compass	Furuno Satellite compass SC-50
GPS	FURUNO 0175
Auto pilot	Navtron NT 921 Mk 2
Echosounder	JRC 7FC-130/130HP
Windmeter	Windex System - Clipper
Crew Finder	MOB Precision Direction Finder RT202

**COMMUNICATION SYSTEMS**

VHF Sailor	RT5022 DSC short range
VHF ICOM	IC-M505
UHF Motorola	CM140
MF/HF (SSB) Radiotelephone	JRC, JSB-196

**IMCA**

CMID	M 149 & M 189 compliant
Diving Services and Systems	compliant