



# Excellent sound characteristics hd ML32i

For acoustically sophisticated areas



## hd ML32i

### LineArray Stick with excellent sound characteristics for acoustically sophisticated areas

The hd ML32i is a passive 1-way column speaker with an elegant look and excellent sound characteristics. The 32 2" broadband chassis produce a cylindrical wave radiation characteristic up to the highest audible frequencies. The resulting higher throw range and better speech intelligibility compared to conventional column loudspeakers predestines the hd ML32 LineArray Sticks for use in acoustically difficult environments such as churches, airports, conference rooms or halls. The large range of up to 30 m and horizontal coverage of 100° ensures efficient sound solutions with only a few speakers. The 2" chassis are the best choice for human voice reproduction due to their low diaphragm weight and nearly the same size as the human vocal cords. The M6 square nut through-hole mullion on the back of the speaker allows mounting of all mounts. Internal clamping connections ensure a tool-free and quick connection of the loudspeakers. For optimum adaptation to the room architecture, the loudspeaker can be customized in all RAL-Color and special length.



# hd ML32i Datasheet

## Features

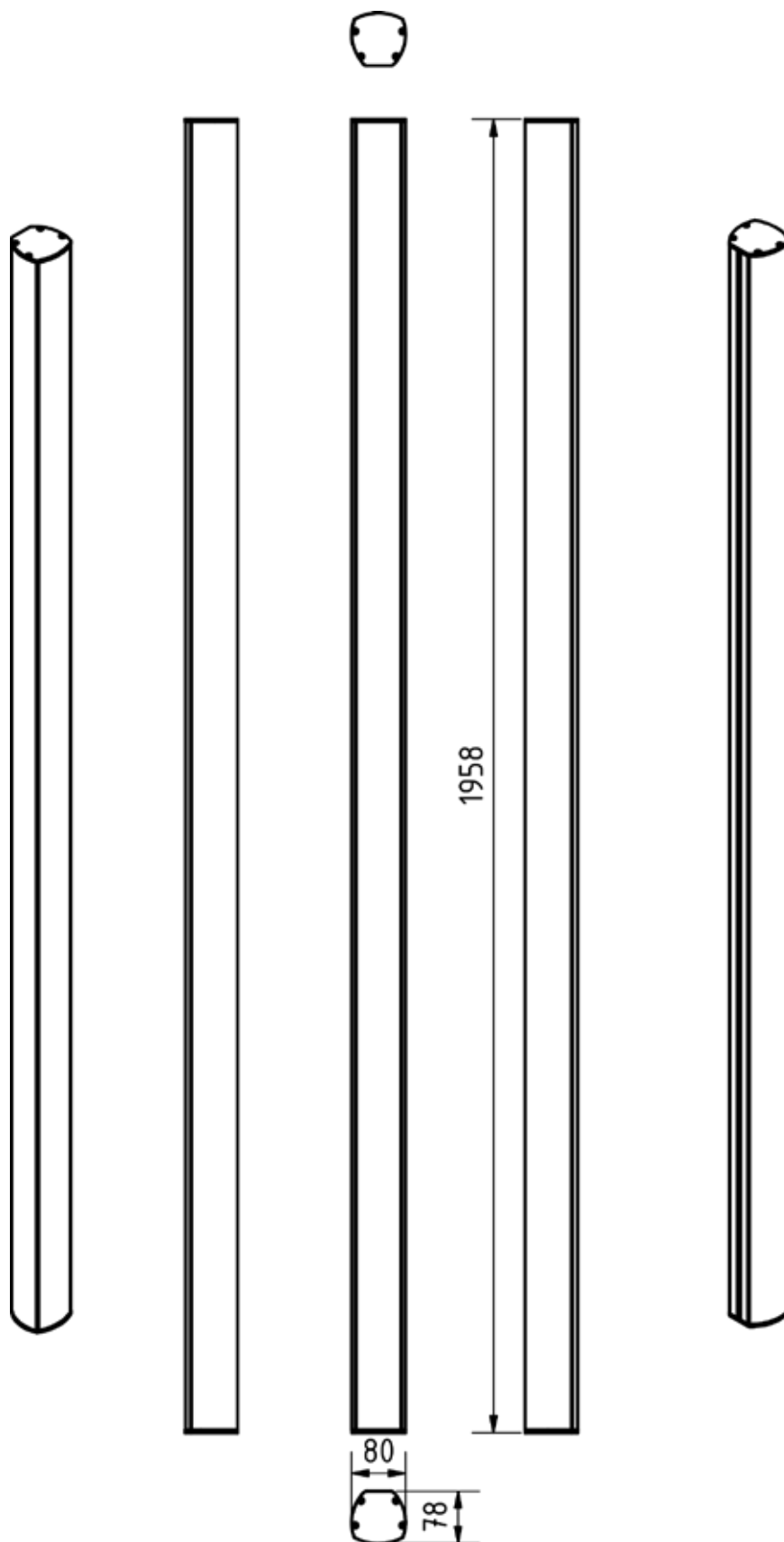
- real cylindrical wave propagation
- elegant design
- precise, even sound emission
- coverage pattern 100° x 8°
- excellent speech intelligibility
- discreet room integration
- 100V version available
- custom length possible

## Application

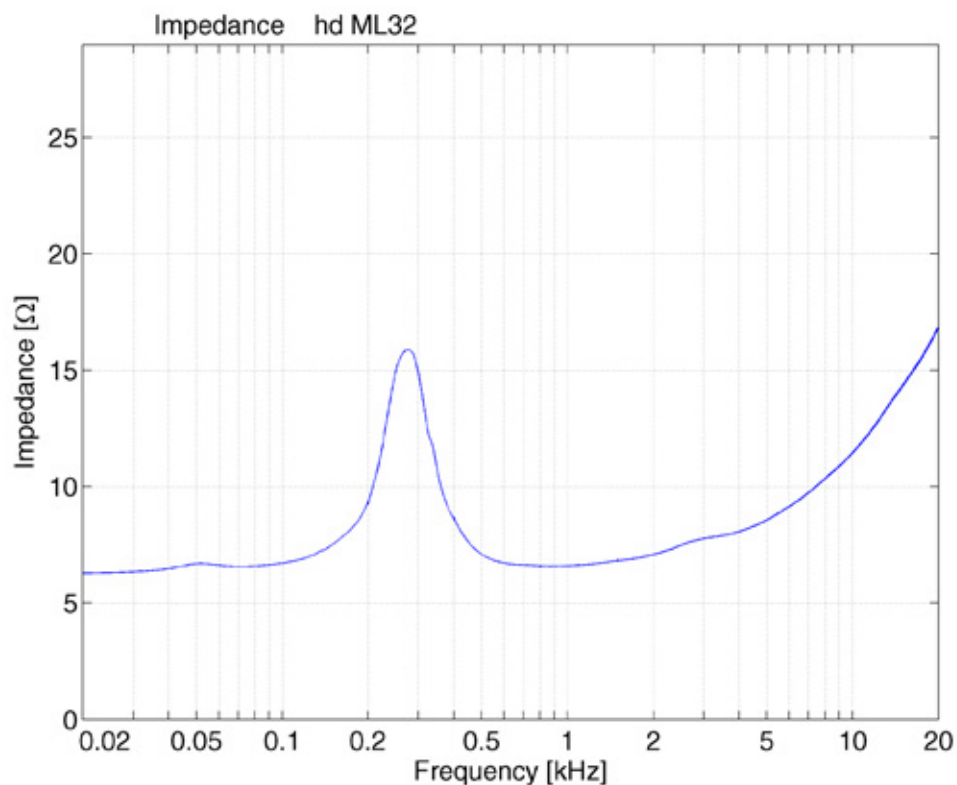
Restaurants, bars, airports, train stations, home theater, conference rooms, hotels, A/V installations, multimedia applications, meeting rooms, TV studios, churches, live music, DJ, concert halls, radio

Model	hd ML32i
<b>Order number</b>	40117
<b>Acoustic design</b>	LineSource
<b>Transducers</b>	32x 2" fullrange chassis
<b>Impedance</b>	8 Ω
<b>Coverage (hor x ver)</b>	100° x 8°
<b>Frequency range (-6 dB)</b>	90 Hz - 20 kHz
<b>Sensitivity (1W / 1m)</b>	96 dB
<b>Power Rating AES / Peak</b>	800 / 1120 W
<b>SPLmax @ 10% THD</b>	127 dB
<b>Enclosure</b>	powder-coated aluminum profile black, steel grille with acoustic foam, internal clamping terminal, cable inlet at the rear, incl. 2x M6 nut
<b>Optional Accessories</b>	RAL-Color (Art. 1070), various wall mount, special length, weather resistant (Art. 40610,) 100V-Transformer (Art. 1074)
<b>Weight</b>	10 kg
<b>Dimensions (W x H x D)</b>	80 x 1958 x 78 mm

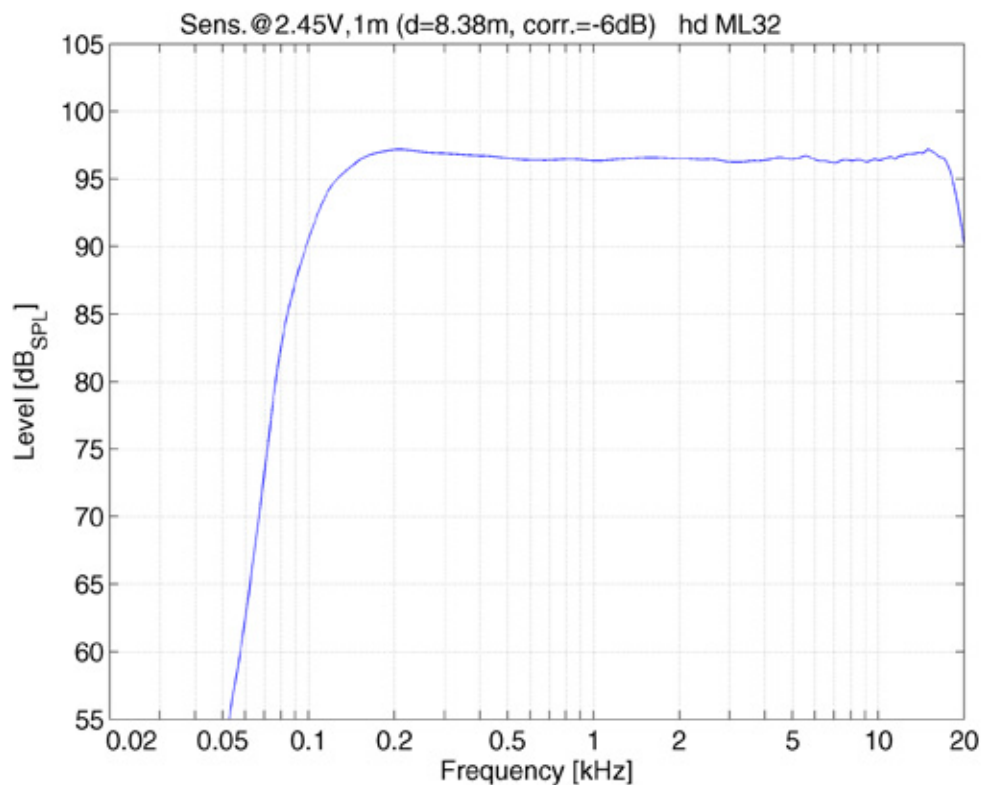
## Dimensions [mm]



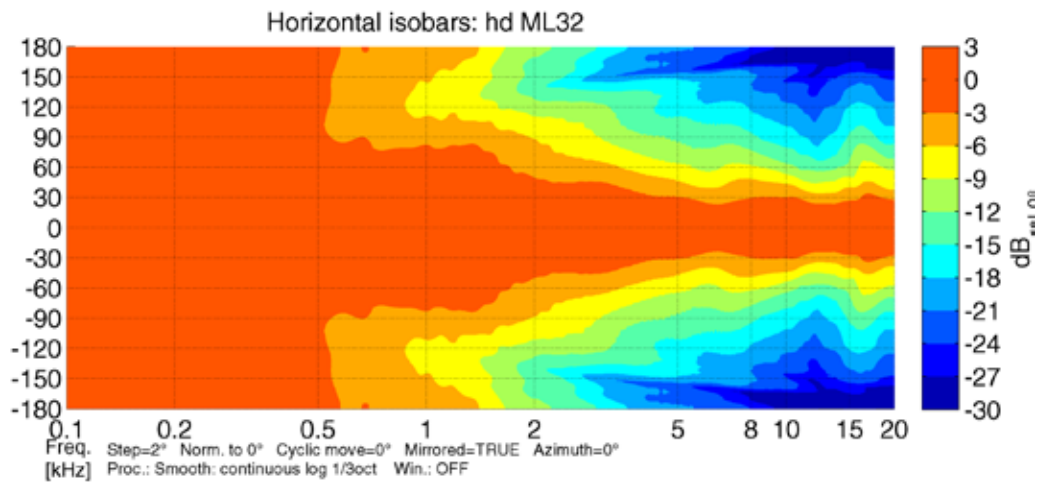
## Impedance



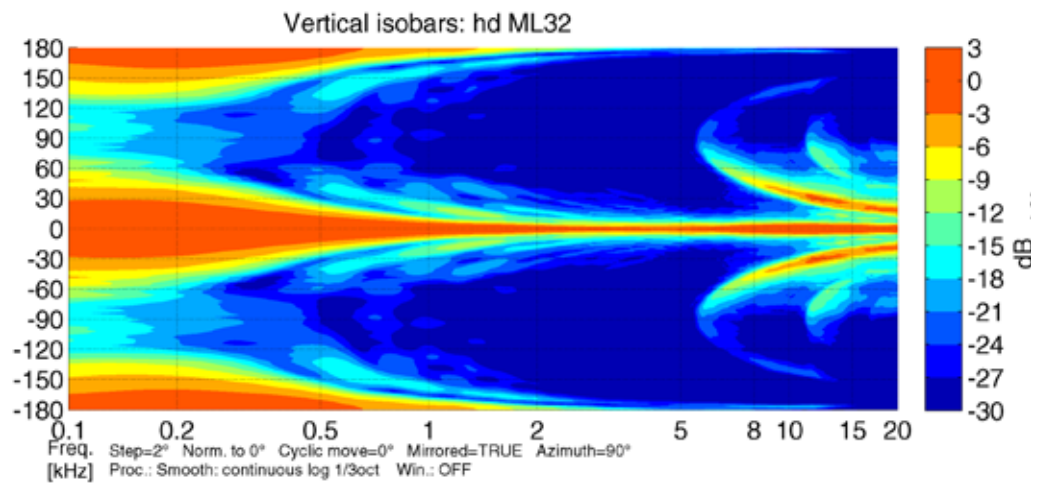
## Frequency response with DSP preset



## Horizontal Isobars



## Vertical Isobars





Engineered  
Made  
In Germany



Harmonic Design

*...simply harmonic sound*

**Harmonic Design  
Audiotechnik GmbH**

Rudolf-Diesel-Straße 11  
DE-74382 Neckarwestheim

+ 49 (0) 7133 / 900 8617  
info@harmonic-design.com  
www.harmonic-design.com