



Extraordinary sound quality hd IC170 Ceiling speaker

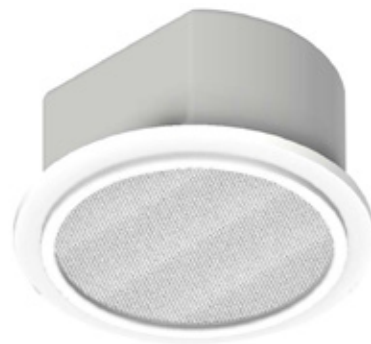
For homogeneous and precisely defined sound



hd IC170

Integrated Ceiling Loudspeaker or homogeneous and precisely defined sound

The hd IC170 is a passive 2-way ceiling loudspeaker, equipped with a 3.5" woofer and a coaxially arranged 1" tweeter with a linear frequency response. Operation can be via any low-Z power amplifier or in existing 70 V / 100 V networks – even without DSP – and makes the hd IC170 the ideal solution for decentralized or small sound reinforcement tasks such as in hotels, restaurants or conference rooms. The 5-stage mode switch enables the selection of the operating mode from low-Z operation with 8 Ω , off or high-resistance operation with 30 W | 15 W | 7.5 W in 100 V networks. The hd IC170 can be easily inserted into the ceiling thanks to the quick-mounting clips. The flame-resistant metal housing has a low installation depth of only 97 mm. Efficient installation on the construction site is possible with the supplied mounting template. A paint cover enables the front grille including the cover to be painted without any problems.



hd IC170 Datasheet

Features

- 3.5" woofer with 1" tweeter
- low installation depth of only 97 mm
- ceiling cutout Ø 145 mm
- integrated transformer with 5-stage mode switch for 8 Ω , Off or 100 V (30 W | 15 W | 7.5 W)
- operation in 70 V / 100 V networks or any low-Z amp
- precise, even radiation 80° conical
- integrated frequency and phase optimization
- excellent speech intelligibility
- front grille can be painted over
- extended frequency response for background music

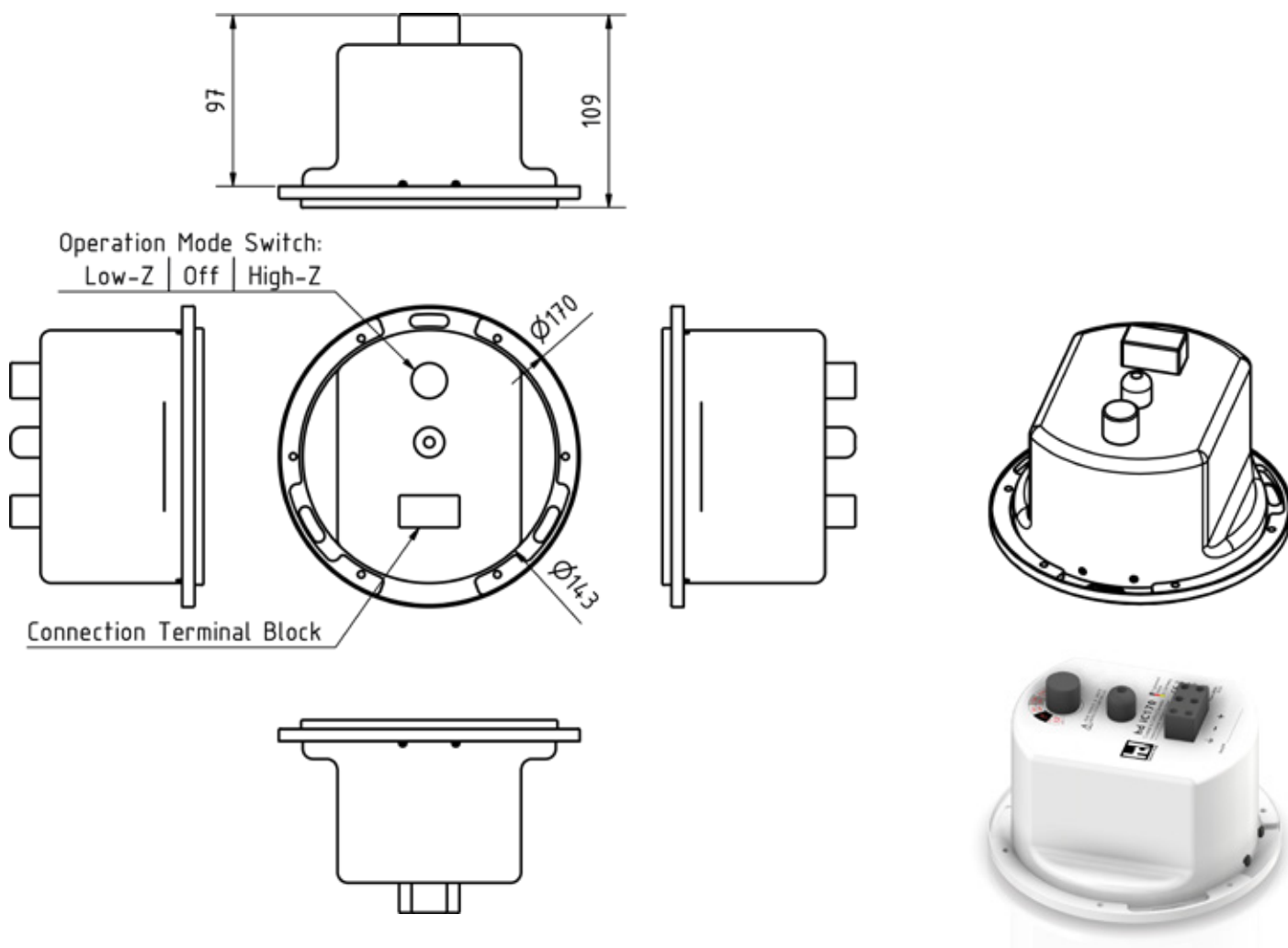
Application

Restaurants, bars, airports, train stations, home theaters, conference rooms, hotels, A/V installations

Model	hd IC170
Order number	40190
Acoustic design	Coaxial
Transducers	1x 3.5" woofer 1x 1" tweeter
Impedance (Low-Z)	8 Ω
Transformer (High-Z)	30 W 15 W 7.5 W @ 100 V 15 W 7.5 W 3.8 W @ 70 V
Crossover	4 kHz
Coverage (conical)	80°
Frequency range (-6 dB)	100 Hz - 22 kHz
Sensitivity (1W / 1m)	88 dB
Power Rating AES / Peak	40 / 55 W
SPLmax @ 10% THD	111 dB
Enclosure	Powder-coated fire pot white with removable steel grille, clamp terminal, 5-stage mode switch (Low-Z Off High-Z), including mounting template / paint cover
Ceiling Cutout	Ø 145 mm
Outer Dimension	Ø 170 mm
max. Installation Depth	97 mm
Weight	1.8 kg
Dimensions (Ø x H)	170 x 109 mm

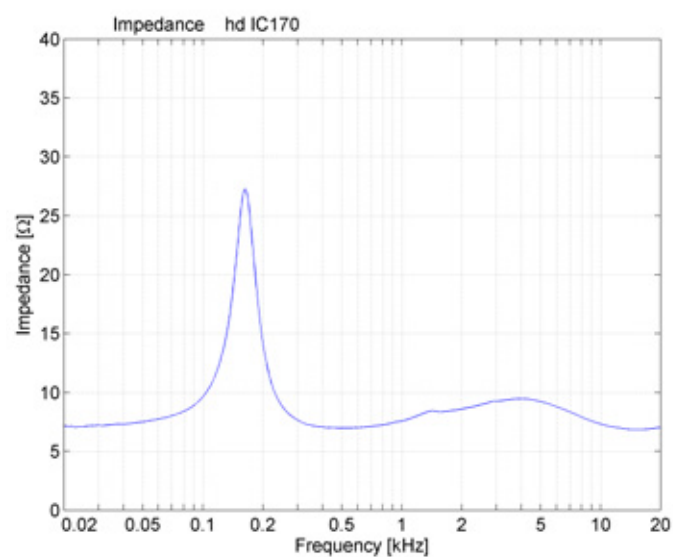
hd IC170 Datasheet

Dimensions [mm]

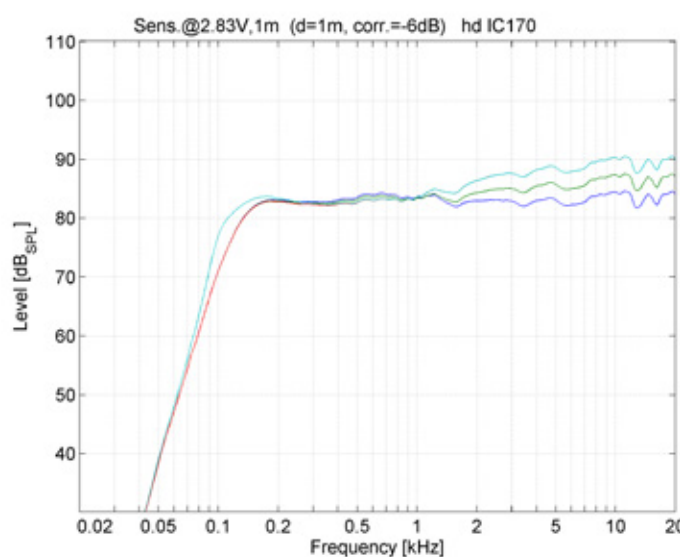


hd IC170 Datasheet

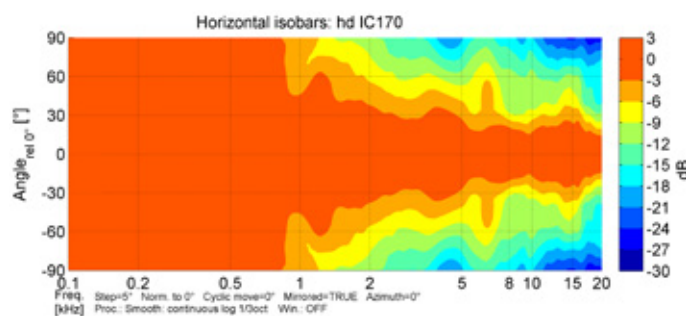
Impedance



Frequency response with DSP preset



Axisymmetric Isobars



Engineered
Made
In Germany



...simply harmonic sound

**Harmonic Design
Audiotechnik GmbH**

Rudolf-Diesel-Straße 11
DE-74382 Neckarwestheim

+ 49 (0) 7133 / 900 8617
info@harmonic-design.com
www.harmonic-design.com