



Array able Subwoofer hd PLB

Full-range application with selected speakers



hd PLB

Array able Subwoofer Stick, can be combined with selected loudspeakers for full-range applications

The hd PLB is an extremely compact, array able subwoofer in the elegant column loudspeaker design of the hd PL series with astonishing low-frequency reproduction for combination with any mid-high loudspeaker for full-range applications. The inconspicuous hd PLB subwoofer element consists of ten powerful 3.5-inch long-stroke chassis with a continuous power handling of 150 W AES.

Thanks to the proven single-roll surround technology for a large linear stroke and the best possible impulse response, the only 104 x 108 mm slim subwoofer has a frequency range of 40 - 160 Hz (-6 dB) and is therefore ideal for invisible applications in restaurants, conference rooms, museums, theaters or churches. The nominal impedance is 6 Ω , so that different sound reinforcement scenarios can be efficiently implemented with the installation amplifiers of the hd Qi-Series.

The hd PLB subwoofer module has the same housing dimensions as the hd CCX and PL-Series and can exemplarily be combined with the hd C5CX or hd PL16 to form an inconspicuous but dynamic full-range column loudspeaker with a transmission range of 40 - 22,000 Hz. On request, this combination can also be manufactured in a continuous housing with the hd Mix+Match option.



hd PLB Datasheet

Features

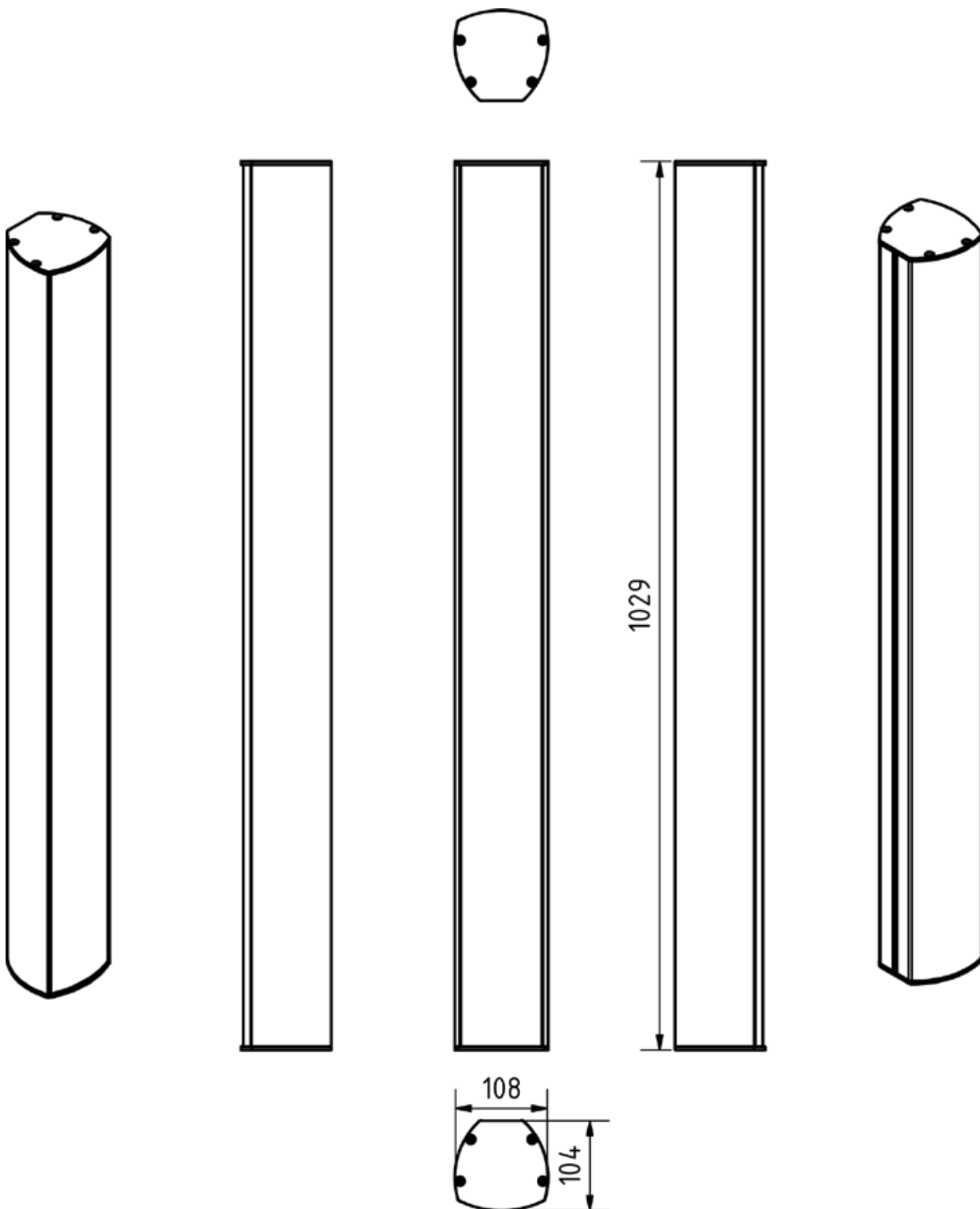
- Subwoofer in column design
- amazing response from 40 Hz
- high SPL of up to 115 dB
- weatherproof aluminum housing
- discreet room integration
- 100V version available
- customizable

Application

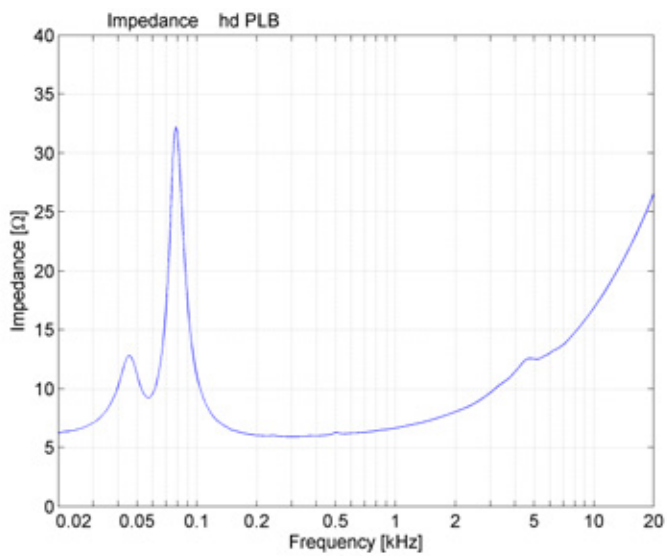
restaurants, bars, airports, yachts, conference rooms, hotels, A/V installations, multimedia applications, conference rooms, TV studios, churches, concert halls, radio stations, maritime

Model	hd PLB
Order number	40150
Acoustic design	Subwoofer
Transducers	10x 3,5" long-stroke-chassis
Impedance	6 Ω
Coverage (hor x ver)	omni
Frequency range (-6 dB)	40 Hz - 160 Hz
Sensitivity (1W / 1m)	83 dB
Power rating AES/ Peak	150 / 300 W
SPLmax @ 10% THD	115 dB
Enclosure	powder-coated aluminum profile black, steel grille with acoustic foam, Clamping terminal inside, Rear cable inlet, incl.2x M6 nuts
Optional accessories	RAL-Color (Art. 1070), various wall brackets, base plate, special length (Art. 40713), weatherproof (Art. 40610), 100V transformer (Art. 1074)
Weight	6 kg
Dimensions (W x H x D)	108 x 1029 x 104 mm

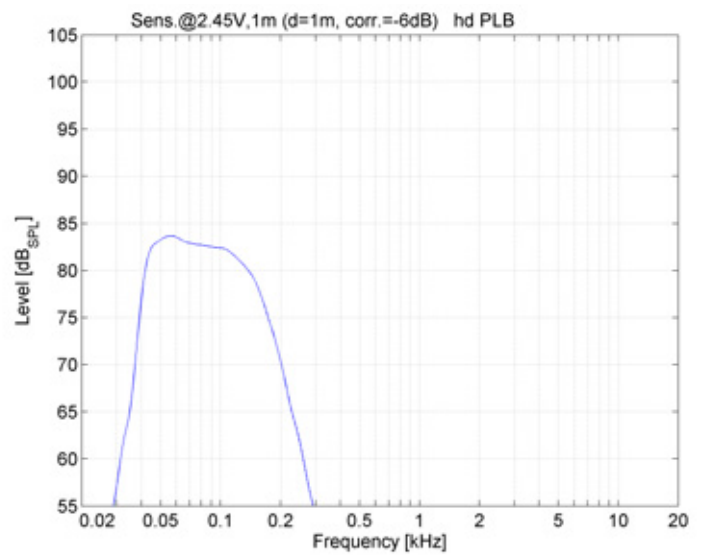
Dimensions [mm]



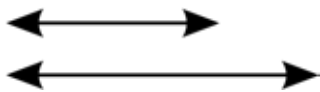
Impedance



Frequency response with DSP preset



Accessories



Special length

Special length of the speaker according to customer requirements.

Order number: 40713 (up to 2000 mm total length)



RAL-Color

Special color per article according to RAL-Color chart.

Order number: 1070



Weather resistant

Galvanized front grille and fixed 2 m connection cable.

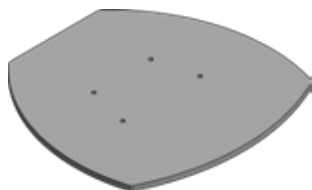
Order number: 40610



100V-Transformer

Integrated 100V transformer with three power taps (30/15/7,5 W).

Order number: 1074



Base plate hd PLB

Steel base plate for hd PLB subwoofer.

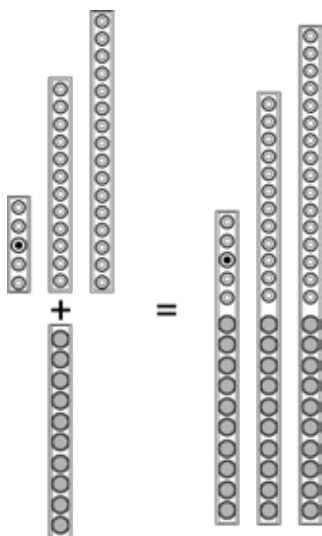
Weight: 2,3 kg

Dimensions (W x H x D): 244 x 6 x 235 mm

Order number: 900115BLK (black RAL 9005)

900115W (white RAL 9010)

900115SC (RAL-Color)



MIX+MATCH

Combination of subwoofer + top speakers in the same housing, with separate connectors. Length depending on the appropriate combination.

Example configurations:

hd PLB + hd C5CX, hd PLB + hd PL12i, hd PLB + hd PL16i

Order number: 40800 (up to 2000 mm total length)

40805 (up to 3000 mm total length)

Accessories



Wall mount 24180

Wall distance 105 mm, laterally swiveling with inclination up to 15°.

Load capacity: 15 kg

Dimensions (W x H x D): 70 x 130 x 105 mm

Order number: 900854BLK (black RAL 9005)
900854W (white RAL 9010)



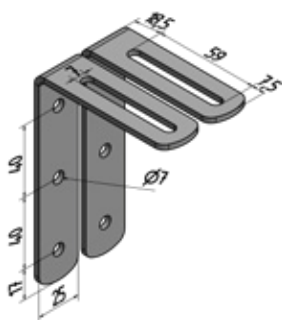
Wall mount 24471

Wall distance 110 mm, laterally swiveling with inclination up to 30°.

Load capacity: 15 kg

Dimensions (W x H x D): 90 x 160 x 110 mm

Order number: 900851BLK (black RAL 9005)
900851W (white RAL 9010)



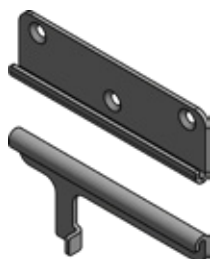
L-bracket wall mount-set

Discreet L-bracket set for extremely close mounting of the speaker to the wall. Side swivel with inclination up to 5°. The speaker's housing plates are equipped with M6 inlet threads. Incl. 2x M6x14 hexagon socket screws.

Load capacity: 30 kg

Dimensions (W x H x D): 20 x 60 x 80 mm

Order number: 900106 (in RAL-Color of loudspeaker)



InvisibleBracket

Wall bracket for invisible attachment to a flat wall with the smallest distance.

Load capacity: 10 kg

Dimensions (W x H x D): 20 x 60 x 80 mm

Order number: 900873

Engineered
Made
In Germany



Harmonic Design

...simply harmonic sound

**Harmonic Design
Audiotechnik GmbH**

Rudolf-Diesel-Straße 11
DE-74382 Neckarwestheim

+ 49 (0) 7133 / 900 8617
info@harmonic-design.com
www.harmonic-design.com