



# Premium listening experience hd PL32Beam

With flexible adjustment of the radiation patterns



## hd PL32Beam

Beamforming loudspeakers with flexible adjustment of the radiation patterns for a premium listening experience

The hd PL32Beam is equipped with 32 shielded 3" fullrange speakers, each with 75 W amplifiers and the latest DSP generation. It offers great potential for improving the sound distribution in complex architectures and strongly reverberant rooms. The goal is to focus the sound only on auditory surfaces, while surfaces that cause unwanted reflections and generate disturbing diffuse sound to be shaded. This leads to a much better speech intelligibility and a first-class listening experience for every listener, allows an inconspicuous positioning of the speakers in previously inappropriate positions, as well as a flexible adaptation of the speaker radiation characteristics to different applications.

The hd PL32Beam is free of interference in the important mid-frequency range thanks to the true 1-way design, as there is no shadowing from superior speakers, and no crossover network adversely affects the radiation, enabling clean implementation of beamforming algorithms. The result is an extremely homogeneous horizontal radiation of 80° and outstanding sound quality for speech and music, extended dynamics. The specially developed electronic unit features a high-performance DSP, which exploits all possibilities of modern signal processing to realize extensive beamforming algorithms. Using the intuitive software hd LevelZ, the sound field can be simulated and optimized to achieve the best possible result.

The ultra compact width of 108 mm makes the hd PL32Beam one of the narrowest beamforming speaker on the market, which is almost invisible in fixed installations. The electronic unit is integrated into the housing of the loudspeaker and is optimally protected by the continuous fine-structured design grid with backed acoustic foam and ensures an unobtrusive integration into any room architecture. The continuous metal rail on the back of the aluminum profile allows the use of M6 square nuts for attaching a wall mounting adapter or the use of the tripod adapter for mobile applications. M6 threads on the top and bottom allow wall mounting with L mounting brackets in the smallest space requirement.



# hd PL32Beam Datasheet



## DSP Electronic Features

- 2In/32Out High-End hd BeamDSP with more than 300 MIPS
- redundant input section with fallback algorithm
- analog + digital inputs with Dante\*
- AdvancedDirectivityOptimization algorithm
- AdvancedRoomOptimization algorithm
- 384 taps FIR filter per input / output
- 16x IIR (double precision) filters per input/output
- 75W Class-D amplifier with digital control for best SNR
- ImpedanceControl with error detection
- multi-stage limiter architecture (Peak/RMS/Thermal)
- hd LevelZ remote software via USB

## Acoustic & Mechanical Features

- true 1-way design
- shielded 3" fullrange speakers
- Standard colors: RAL 9005 & RAL 9010
- small width of 108 mm
- precise, even sound emission
- high sound pressure
- excellent speech intelligibility
- discreet room integration
- HiFi sound

## Application

Restaurants, bars, airports, train stations, home theater, conference rooms, hotels, A/V installations, multimedia applications, meeting rooms, TV studios, churches, lecture halls, Museums, sports venues, live events, broadcast

\*Dante optional

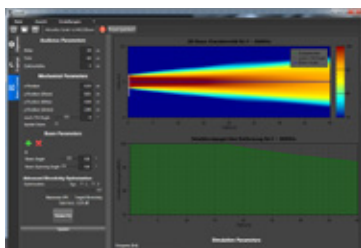
Model	hd PL32Beam
Order number	400113
Acoustic design	active Beamforming speaker
Transducers	32x 3" fullrange chassis
max. Beam Count	4
Amplifiers	32x 75 W
Coverage hor	80°
Coverage ver	0° - 90°, ± 60° adjustable (0.1°/step)
Frequency range (-6 dB)	70 Hz - 20 kHz
SPLmax @ 10% THD	129 dB
Features	AdvancedDirectivity Optimization, AdvancedRoomOptimization, redundant input section with 2x analog inputs and fallback algorithm, limiters
Enclosure	powder-coated aluminum profile black (RAL 9005) or white (RAL 9010), steel grille with acoustic foam, 2x M6 thread in the cover / bottom, rear connection panel with Phoenix 3-pin network, Phoenix 6-pole audio, USB
Optional Accessories	Dante (Art. 400140), various wall mount, RAL-Color (Art. 1071), special length
Weight	29 kg
Dimensions (W x H x D)	108 x 3189 x 104 mm

## Beamforming Features

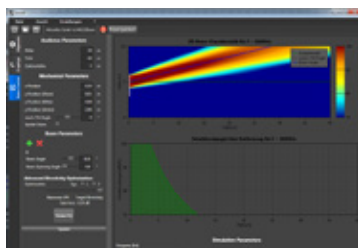
### BeamControlParameter

#### Beam Steering.

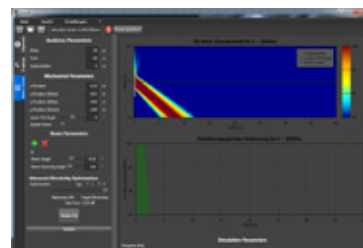
Beam steering is the basic discipline of beam forming where the main lobe is digitally steered up- or downwards. Harmonic Design® Beamforming loudspeakers are capable to adjust the vertically main lobe beam angle up to  $\pm 60^\circ$  with an accuracy of  $0.1^\circ/\text{step}$ .



main beam @  $0^\circ$



main beam @  $+10^\circ$



main beam @  $-32^\circ$

#### Frequency Independent Opening Angle.

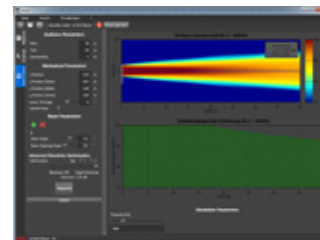
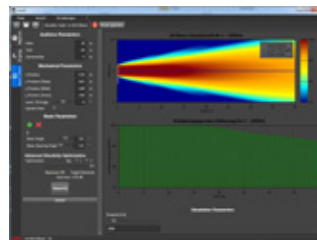
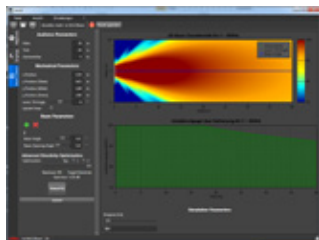
Conventional loudspeaker arrays increase their directivity with increasing frequency resulting in a wide main lobe at low frequencies and a narrow main lobe at high frequencies. A frequency independent opening angle preserves the same opening angle over a great bandwidth within physical limitations and is adjustable from minimum to  $90^\circ$  in  $0.1^\circ$  steps. This guarantees perfect concentration of sound where it belongs and where not.

f = 800 Hz

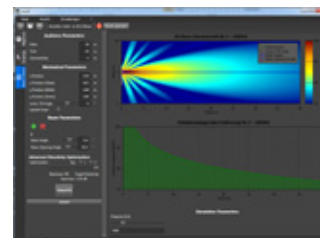
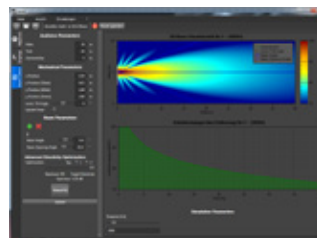
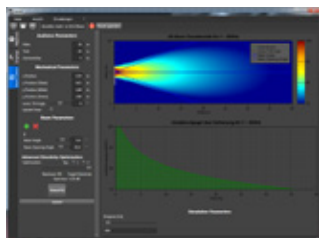
f = 2 kHz

f = 4 kHz

conventional main beam



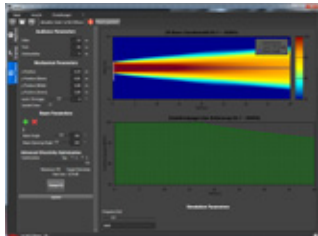
frequency independent opening angle  $\theta = 30^\circ$



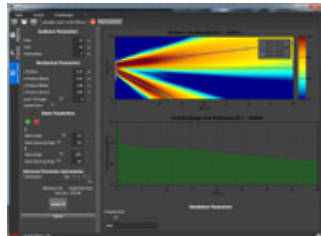
# hd PL32Beam Datasheet

## Multiple Beams.

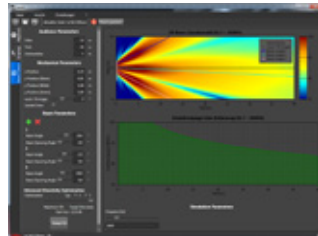
The unique Harmonic Design® algorithm enables up to 4 separate main beams that can be steered individually and still create a specific frequency independent opening angle.



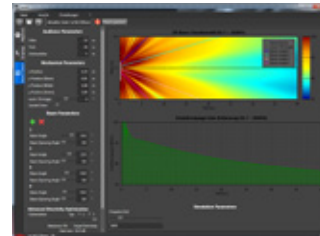
main beam @ 0°



2 beams @ +5°|-20°



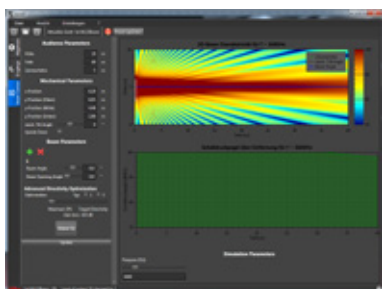
3 beams @ +20°|-2°|-20°



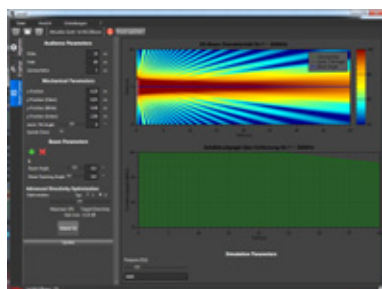
4 beams @  
35°|+12°|-12°|-35°

## Advanced Directivity Optimization.

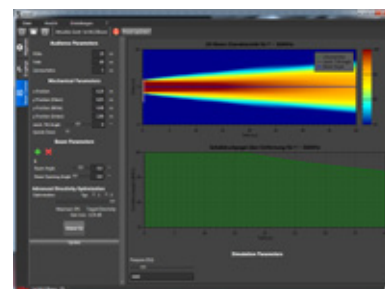
The conventional beam radiation pattern also contains unwanted side lobes that excite the auditorium with disturbing noise while declining the speech intelligibility. By applying special algorithms to the individual DSP channels, an almost optimum, light-beam-like main lobe beam is achievable with an accurate side lobe suppression. The enhancements to improve speech intelligibility in reverberant rooms by applying ADO algorithm are extreme. The strength of the optimization tool may be adjusted by the end-user either towards maximum SPL or optimum target directivity.



conventional beam pattern,  
ADO off



intermediate ADO



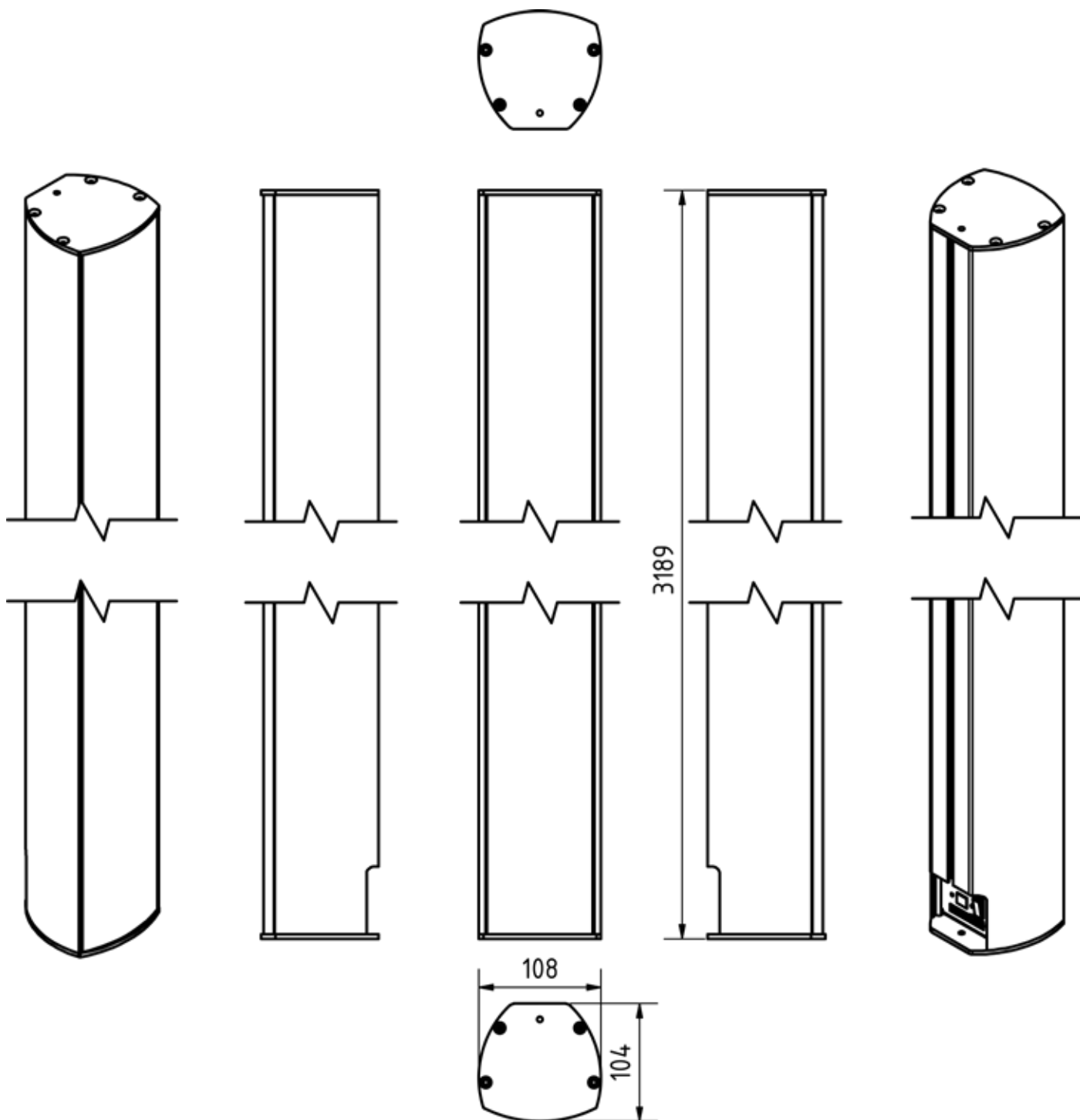
maximum ADO

## Focus.

By default the focus point of the wave fronts of the individual loudspeakers is infinity and creates parallel running pressure waves. At the distance infinity all wave fronts are perfectly correlated and coherent meaning they arrive at the same time with the same relative phase. Whenever this large throw is not necessary it may be useful to focus the wave fronts to the front rows in steps of 0.1 m to tighten the „sweet spot“.

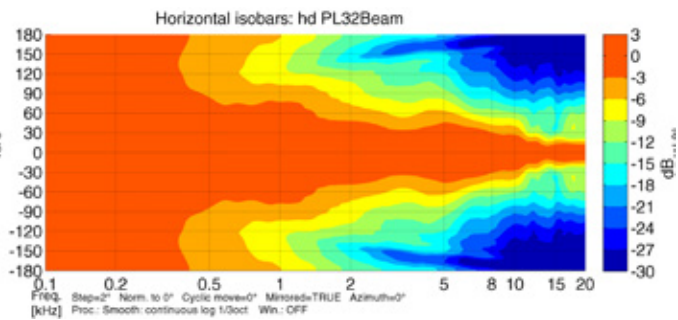
# hd PL32Beam Datasheet

## Dimensions [mm]



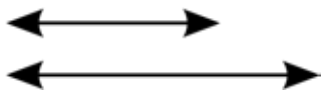
# hd PL32Beam Datasheet

## Horizontal Isobars



# hd PL32Beam Datasheet

## Accessories



### Special length

Special length of the speaker according to customer requirements.

Order number: upon request



### RAL-Color

Special color per article according to RAL-Color chart.

Order number: 1072



### Dante

1 Ch digital audio stream over Dante network via PoE, replacing the primary analog input.

Order number: 400140



### Wall mount 24481

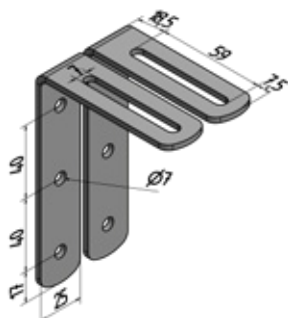
Wall distance 110 mm, laterally swiveling with inclination up to 30°.

Load capacity: 30 kg

Dimensions (W x H x D): 120 x 220 x 110 mm

Order number: 900852BLK (black RAL 9005)

900852W (white RAL 9010)



### L-bracket wall mount-set

Discreet L-bracket set for extremely close mounting of the speaker to the wall. Side swivel with inclination up to 5°. The speakers housing plates are equipped with M6 inlet threads.

Incl. 2x M6x14 hexagon socket screws.

Load capacity: 30 kg

Dimensions (W x H x D): 20 x 60 x 80 mm

Order number: 400150 (in RAL-Color of speaker)



Engineered  
Made  
In Germany



Harmonic Design

*...simply harmonic sound*

**Harmonic Design  
Audiotechnik GmbH**

Rudolf-Diesel-Straße 11  
DE-74382 Neckarwestheim

+ 49 (0) 7133 / 900 8617  
info@harmonic-design.com  
www.harmonic-design.com