



# Ultimate High-End-Sound hd LSA12

Brilliant speech intelligibility and dynamic tonality



## hd LSA12

### LineSourceArray for brilliant speech intelligibility and dynamic tonality

The hd LSA12 is an efficient line array module of the latest generation, which is equipped with a specially developed high-performance 12" N-woofer chassis and is actively driven. The HF segment consists of two 1.4" neodymium compression drivers with special polymer diaphragms coupled to wave formers to create a cylindrical wavefront. The built-in 3-point FastRig rigging allows you to adjust the vertical sound opening angle precisely in 1° increments from 0° to 11° for flown vertical arrays of up to 16 loudspeakers. All attachments and ball lock pins are firmly connected to the housing. Different horns of the high-frequency section allow symmetrical and asymmetrical horizontal beam angles for permanently installed applications, in order to precisely align the loudspeaker system with the surface to be sounded and to block out any disturbing reflections from walls or obstacles. An accurate prediction of the radiated sound field as well as calculation the optimum splay angles for the given setup is possible with EASE Focus. Operation takes place via Harmonic Design® system amplifiers and guarantees outstanding performance.



# hd LSA12 Datasheet

## Features

- compact dimensions
- high efficiency, long throw range
- BI-AMP for uncompromising sound
- Power handling 600 W / 2400 W (AES / Peak)
- coverage 90° x 15°, 120° x 15° or asymmetrical 105° x 15°
- linear sound
- big headroom thanks to 2x HF driver / module
- integrated 3-point FastRig rigging

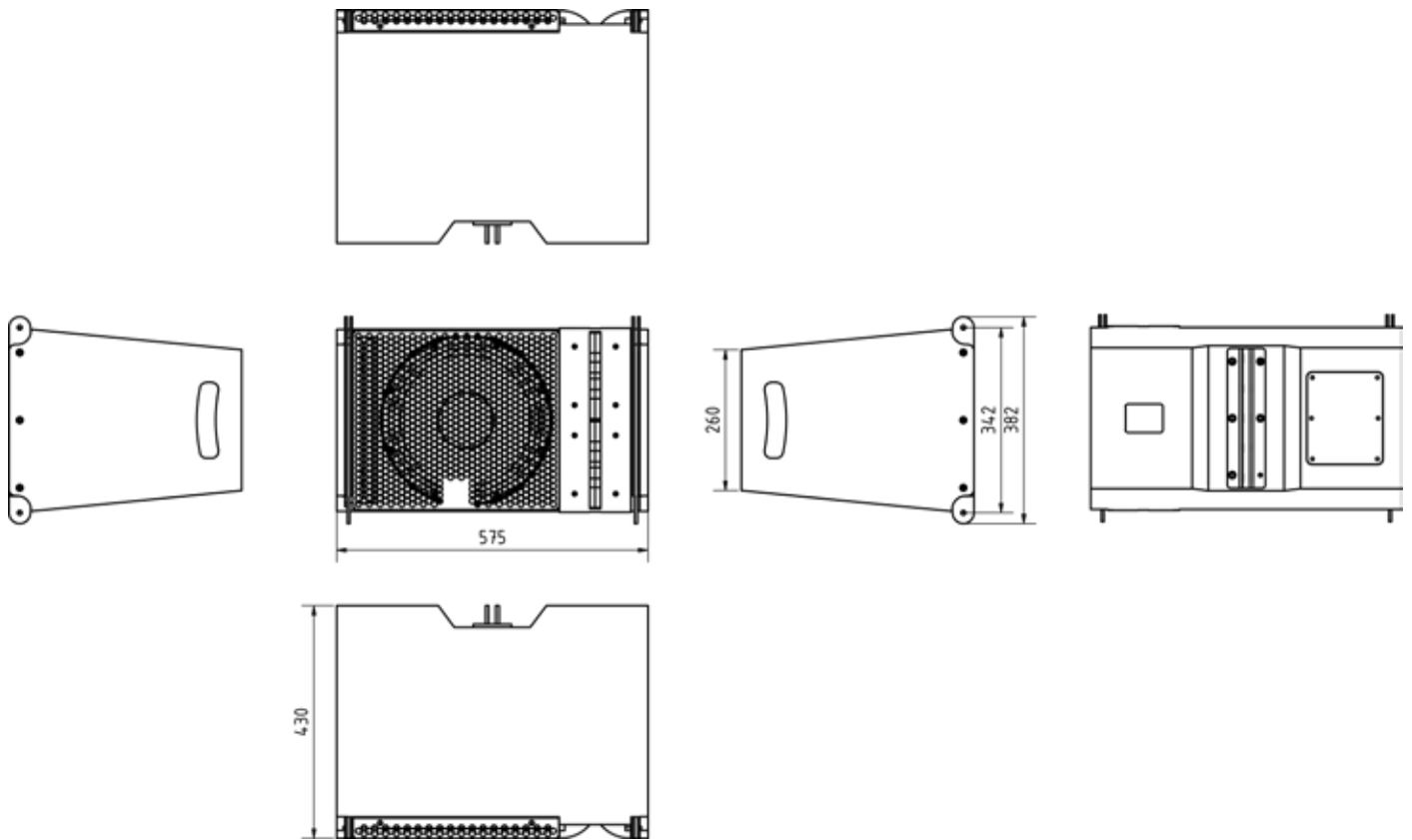
## Application

FOH large sound system, mobile or fixed, live events, clubs, sports venues, theaters, city halls

Model	hd LSA12
<b>Order number</b>	60100 - 90° x 15° 60101 - 120° x 15°
<b>Acoustic design</b>	LineSource / Bassreflex
<b>Transducers</b>	1x 12"N LF 2x 1.4"N HF
<b>Impedance</b>	LF: 8 Ω, HF: 8 Ω
<b>Crossover</b>	active, 900 Hz
<b>Coverage (hor x ver)</b>	90° x 15°, 120° x 15°, asym. 105° x 15°
<b>Frequency range (-6 dB)</b>	45 Hz - 20 kHz
<b>Sensitivity (1W / 1m)</b>	LF: 98 dB, HF: 110 dB
<b>Power Rating AES / Peak</b>	600 / 2400 W
<b>SPLmax @ 10% THD</b>	138 dB
<b>Enclosure</b>	Robust multiplex housing with polyurethane coating black, recessed connection panel with 2x NL4, transport handles, integrated rigging, steel grille with acoustic foam
<b>Optional Accessories</b>	Installation version, weather resistant, hd LSA12-SF6 (Art. 60804), RAL-Color, hd UniFrame16 (Art. 60805), LSA12 TourCase, LSA12 Dolly
<b>Weight</b>	27 kg
<b>Dimensions (W x H x D)</b>	575 x 340 x 430 mm

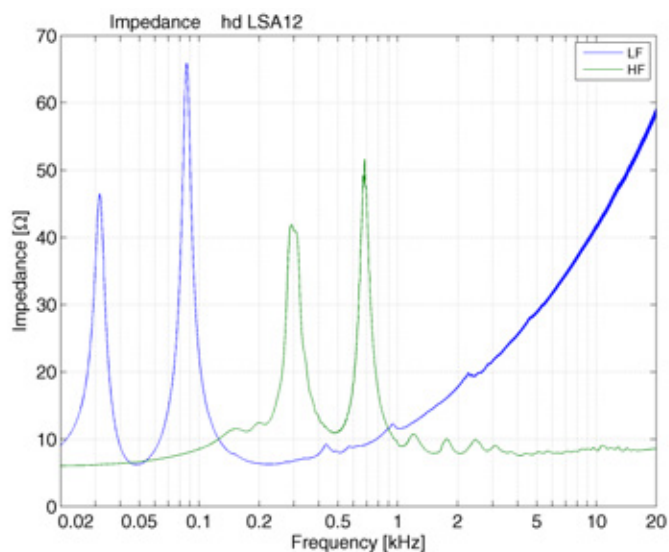
# hd LSA12 Datasheet

## Dimensions [mm]

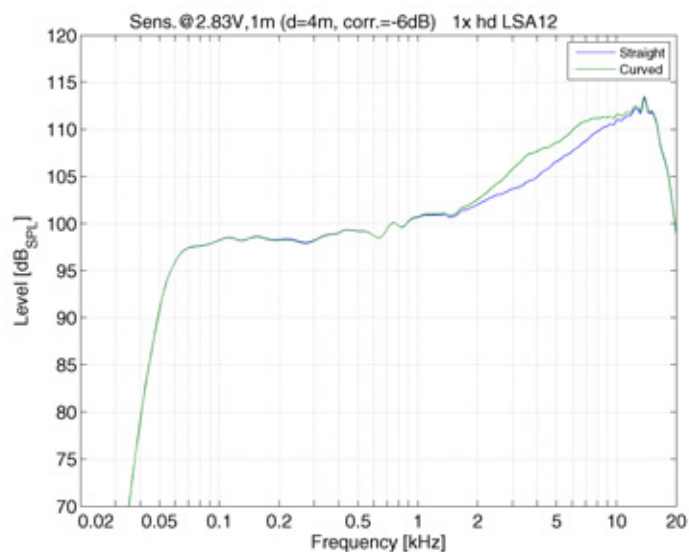


# hd LSA12 Datasheet

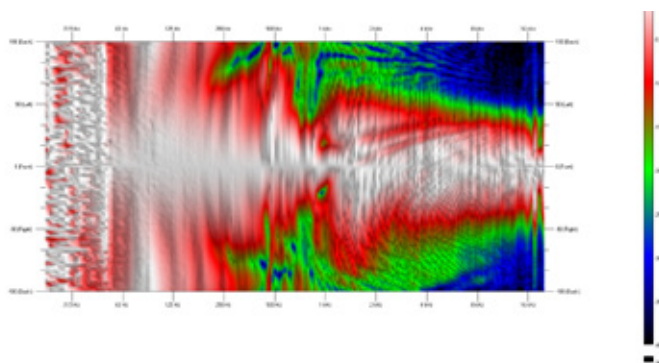
## Impedance



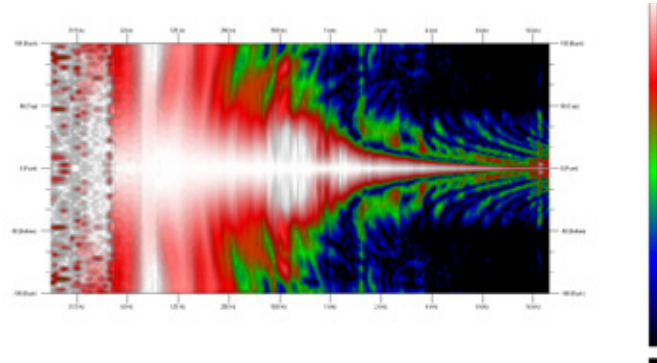
## Frequency response with DSP preset



## Horizontal Isobars

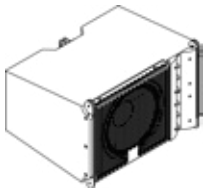


## Vertical Isobars



# hd LSA12 Datasheet

## Accessories

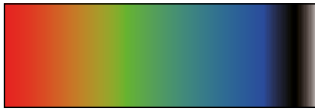


### Installation version

Elegant design for permanent installation without handles.

Order number: 40080 (hd LSA12i 90° x 15°)

40081 (hd LSA12i 120° x 15°)



### RAL-Color

Special color per article according to RAL-Color chart.

Order number: 1070



### Weather resistant

Impregnation against weather influences.

Order number: 40610



### hd LSA12-SF6

Flying frame for flying a vertical array of up to six speakers, incl. 1x rear-lock pin.

Order number: 60804



### hd UniFrame16

universal groundstack / flying frame for hd LSA12, hd HLS20, hd HLS24 and flyable subwoofers.

Order number: 60805



### hd LAS12-TourCase

Touring Case for three hd LSA12 with 8x folding handles (2x per side) and 4x 100 mm wheels.

Order number: 950090

## Accessories



### LSA-Front-Lock-Pin

Self-locking ball lock pin with black mushroom type handle, Ø 8 x 15 mm.  
Order number: 900304

---



### LSA-Loadadapter-Pin

Self-locking ball lock pin with black mushroom type handle, Ø 10 x 25 mm.  
Order number: 900306

---



### LSA-Rear-Lock-Pin

Self-locking ball lock pin with black mushroom type handle, Ø 10 x 25 mm.  
Order number: 900305

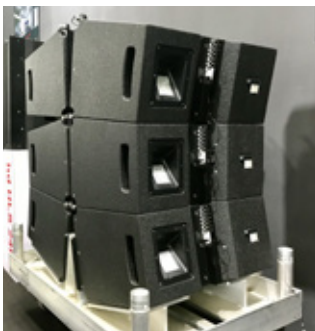
---



### UniFrame16-Lastadapter

Load adapter for holding a shackle with max. Ø 17 mm for use with hd UniFrame16.  
Order number: 900316

---



### hd LSA12-Dolly

Touring Dolly for six hd LSA12 with 4x 100 mm wheels.  
Order number: 950095

Engineered  
Made  
In Germany



Harmonic Design

*...simply harmonic sound*

**Harmonic Design  
Audiotechnik GmbH**

Rudolf-Diesel-Straße 11  
DE-74382 Neckarwestheim

+ 49 (0) 7133 / 900 8617  
info@harmonic-design.com  
www.harmonic-design.com