



Ultimate High-End-Sound hd LSA12

Brilliant speech intelligibility and dynamic tonality



hd LSA12P

LineSourceArray for brilliant speech intelligibility and dynamic tonality

The hd LSA12P is an efficient line array module of the latest generation, which is equipped with a specially developed high-performance 12" N-woofer chassis and passive crossover. The HF segment consists of two 1.4" neodymium compression drivers with special polymer diaphragms coupled to wave formers to create a cylindrical wavefront. The built-in 3-point FastRig rigging allows you to adjust the vertical sound opening angle precisely in 1° increments from 0° to 11° for flown vertical arrays of up to 16 loudspeakers. All attachments and ball lock pins are firmly connected to the housing. Different horns of the high-frequency section allow symmetrical and asymmetrical horizontal beam angles for permanently installed applications, in order to precisely align the loudspeaker system with the surface to be sounded and to block out any disturbing reflections from walls or obstacles. An accurate prediction of the radiated sound field as well as calculation the optimum splay angles for the given setup is possible with EASE Focus. Operation takes place via Harmonic Design® system amplifiers and guarantees outstanding performance.



hd LSA12P Datasheet

Features

- compact dimensions
- high efficiency, long throw range
- passive crossover for best economy
- Power handling 600 W / 2400 W (AES / Peak)
- coverage 90° x 15°, 120° x 15° or asymmetrical 105° x 15°
- linear sound
- big headroom thanks to 2x HF driver / module
- integrated 3-point FastRig rigging

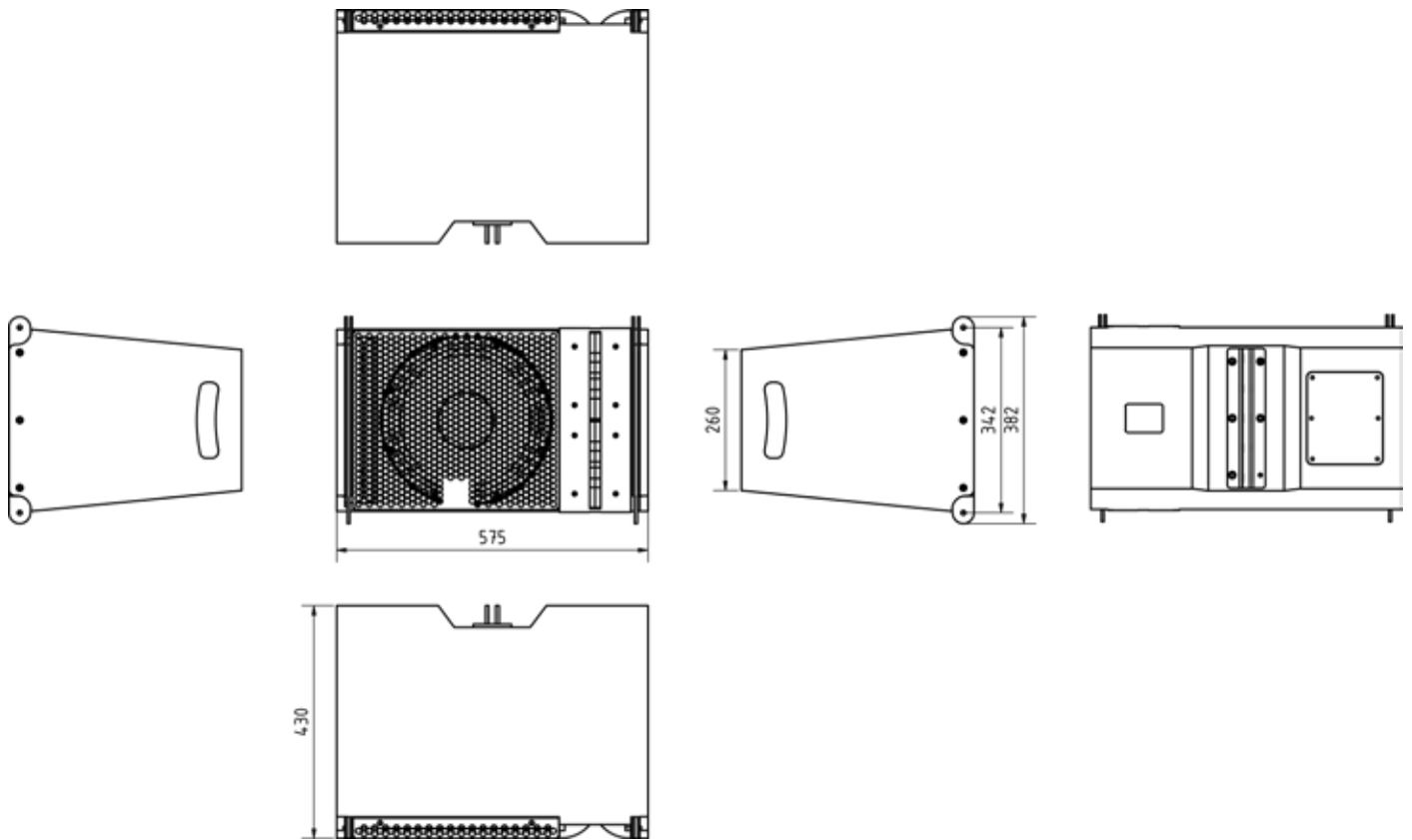
Application

FOH large sound system, mobile or fixed, live events, clubs, sports venues, theaters, city halls

Model	hd LSA12P
Order number	60105 - 90° x 15° 60106 - 120° x 15°
Acoustic design	LineSource / Bassreflex
Transducers	1x 12"N LF 2x 1.4"N HF
Impedance	8 Ω, HF
Crossover	900 Hz
Coverage (hor x ver)	90° x 15°, 120° x 15°, asym. 105° x 15°
Frequency range (-6 dB)	45 Hz - 20 kHz
Sensitivity (1W / 1m)	105 dB
Power Rating AES / Peak	600 / 2400 W
SPLmax @ 10% THD	138 dB
Enclosure	Robust multiplex housing with polyurethane coating black, recessed connection panel with 2x NL4, transport handles, integrated rigging, steel grille with acoustic foam
Optional Accessories	Installation version, weather resistant, hd LSA12-SF6 (Art. 60804), RAL-Color, hd UniFrame16 (Art. 60805), LSA12 TourCase, LSA12 Dolly
Weight	28 kg
Dimensions (W x H x D)	575 x 340 x 430 mm

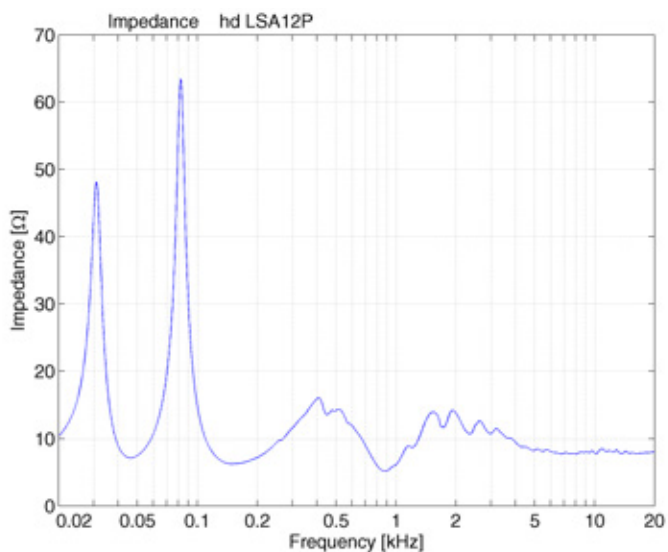
hd LSA12P Datasheet

Dimensions [mm]

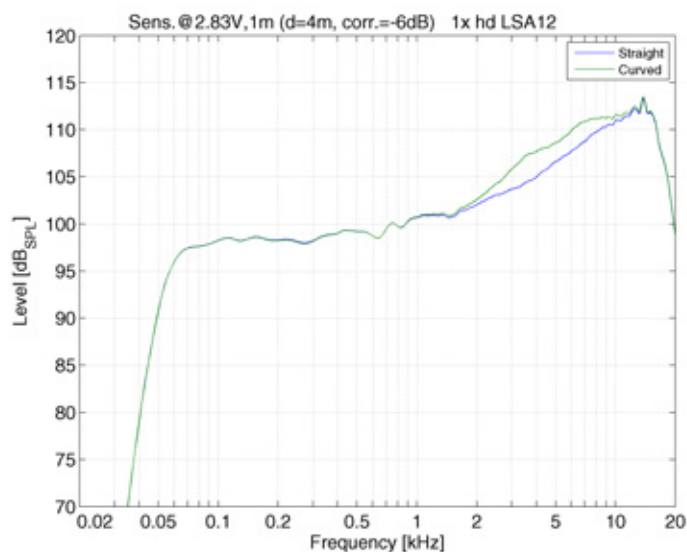


hd LSA12P Datasheet

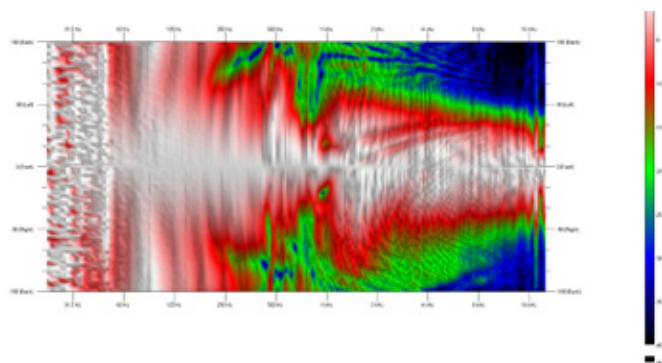
Impedance



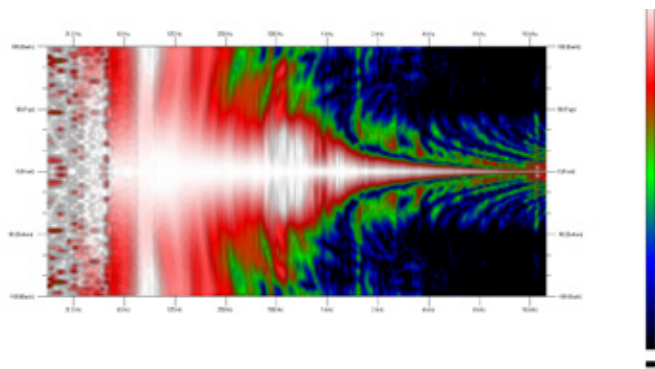
Frequency response with DSP preset



Horizontal Isobars

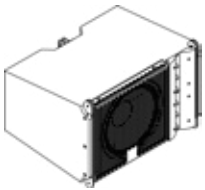


Vertical Isobars



hd LSA12P Datasheet

Accessories

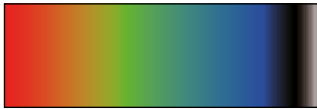


Installation version

Elegant design for permanent installation without handles.

Order number: 40082 (hd LSA12Pi 90° x 15°)

40083 (hd LSA12Pi 120° x 15°)



RAL-Color

Special color per article according to RAL-Color chart.

Order number: 1070



Weather resistant

Impregnation against weather influences.

Order number: 40610



hd LSA12-SF6

Flying frame for flying a vertical array of up to six speakers, incl. 1x rear-lock pin.

Order number: 60804



hd UniFrame16

Universal groundstack / flying frame for hd LSA12, hd HLS20, hd HLS24 and flyable subwoofers.

Order number: 60805



hd LAS12-TourCase

Touring Case for three hd LSA12 with 8x folding handles (2x per side) and 4x 100 mm wheels.

Order number: 950090

Accessories



LSA-Front-Lock-Pin

Self-locking ball lock pin with black mushroom type handle, Ø 8 x 15 mm.
Order number: 900304



LSA-Loadadapter-Pin

Self-locking ball lock pin with black mushroom type handle, Ø 10 x 25 mm.
Order number: 900306



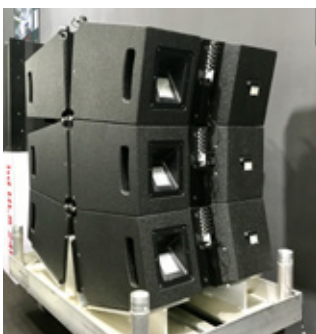
LSA-Rear-Lock-Pin

Self-locking ball lock pin with black mushroom type handle, Ø 10 x 25 mm.
Order number: 900305



UniFrame16-Lastadapter

Load adapter for holding a shackle with max. Ø 17 mm for use with hd UniFrame16.
Order number: 900316



hd LSA12-Dolly

Touring Case for three hd LSA12 with 8x folding handles (2x per side) and 4x 100 mm wheels.

Order number: 950095

Engineered
Made
In Germany



Harmonic Design

...simply harmonic sound

**Harmonic Design
Audiotechnik GmbH**

Rudolf-Diesel-Straße 11
DE-74382 Neckarwestheim

+ 49 (0) 7133 / 900 8617
info@harmonic-design.com
www.harmonic-design.com