



# Precise sound radiation hd 8CXN

For demanding and wide-ranging locations



## hd 8CXN

### Coaxial loudspeaker for demanding and wide-ranging locations

The hd 8CXN is a passive 2-way system equipped with a bass-reflex 8" neodymium woofer / midrange speaker and a 1" neodymium high-frequency driver. Operation is possible via any power amplifier – even without DSP – and makes the hd 8CXN the optimal solution for high-quality mobile or permanently installed public address applications in, for example, industrial events, theaters or sports facilities. The housing is made of multiplex wood and provided with a shock and weather-resistant polyurethane coating, and a ballproof, elegant and rounded steel grille in black. For permanent installation, two M6 and M8 inlet threads are available for the cost-effective installation of standardized wall mounts or brackets. The conical horn provides a natural sound without the horn-typical sound coloration, a long range and optimal speech intelligibility. The frequency- and phase-optimized crossover guarantees a linear transmission behavior. An integrated 35 mm flange allows use on a tripod or with two monitor angles with 35° and 45° as a stage monitor.



# hd 8CXN Datasheet

## Features

- operation on any amplifier
- frequency and phase optimization integrated
- elegant and slim design
- clear mids and brilliant highs
- coverage 80° x 70°
- two monitor angles 35° and 45°
- excellent speech intelligibility
- compact dimensions
- RAL-Color optional

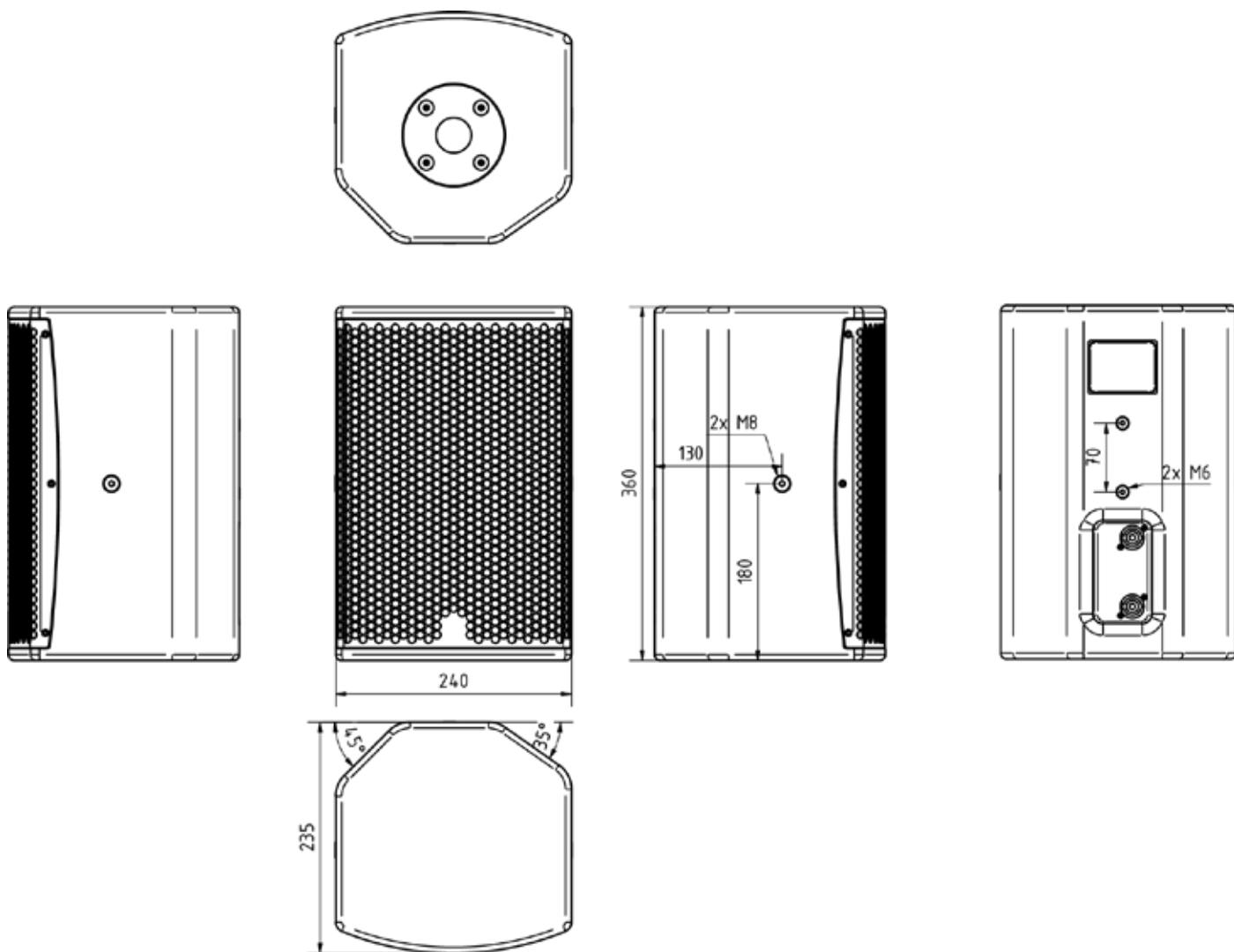
## Application

Industrial events, theaters, city halls, restaurants, bars, A/V installations, TV studios, sports facilities, amusement parks, compact PA

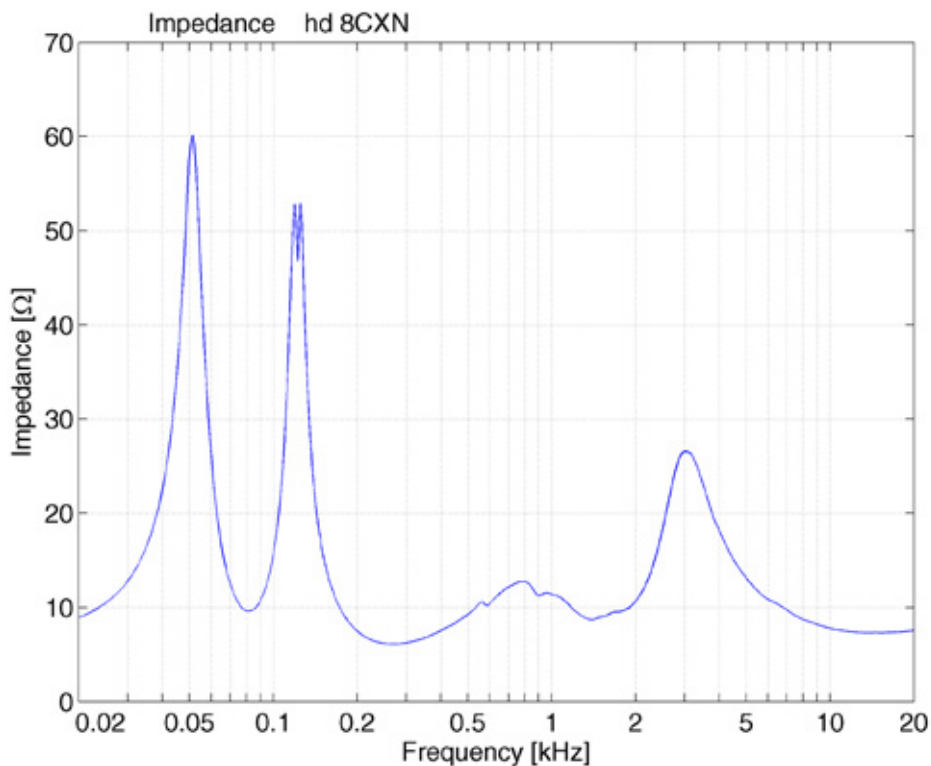
Model	hd 8CXN
Order number	60050
Acoustic design	Coax, Bassreflex
Transducers	1x 8"N LF 1x 1"N HF
Impedance	8 Ω
Crossover	1250 Hz
Coverage (hor x ver)	80° x 70°
Frequency range (-6 dB)	70 Hz - 22 kHz
Sensitivity (1W / 1m)	97 dB
Power Rating AES / Peak	280 / 1120 W
SPLmax @ 10% THD	125 dB
Enclosure	robust multiplex housing with polyurethane coating black, recessed connection panel with 2x NL4, M6 & M8 inlet thread, steel grille with acoustic foam inside, 35 mm flange, 35°/45° baffle angle
Optional Accessories	wall bracket (Art. 900851), U-bracket, T-mounting adapter (Art. 900869), RAL-Color (Art. 1070), weather resistant (Art. 40610)
Weight	8 kg
Dimensions (W x H x D)	240 x 360 x 235 mm

# hd 8CXN Datasheet

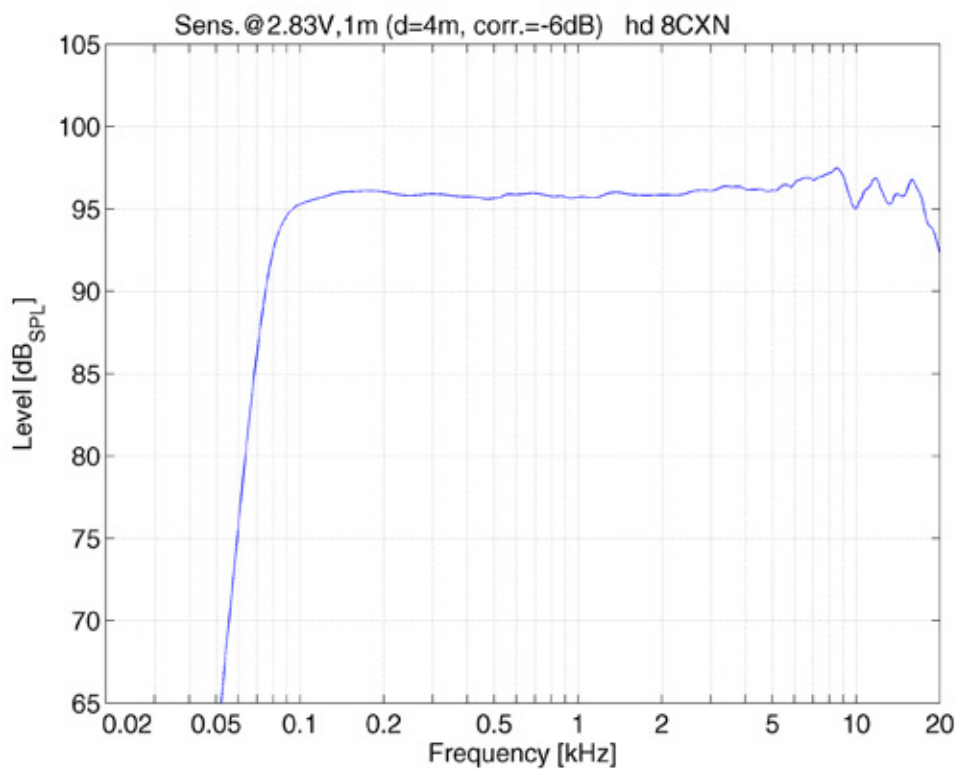
## Dimensions [mm]



## Impedance

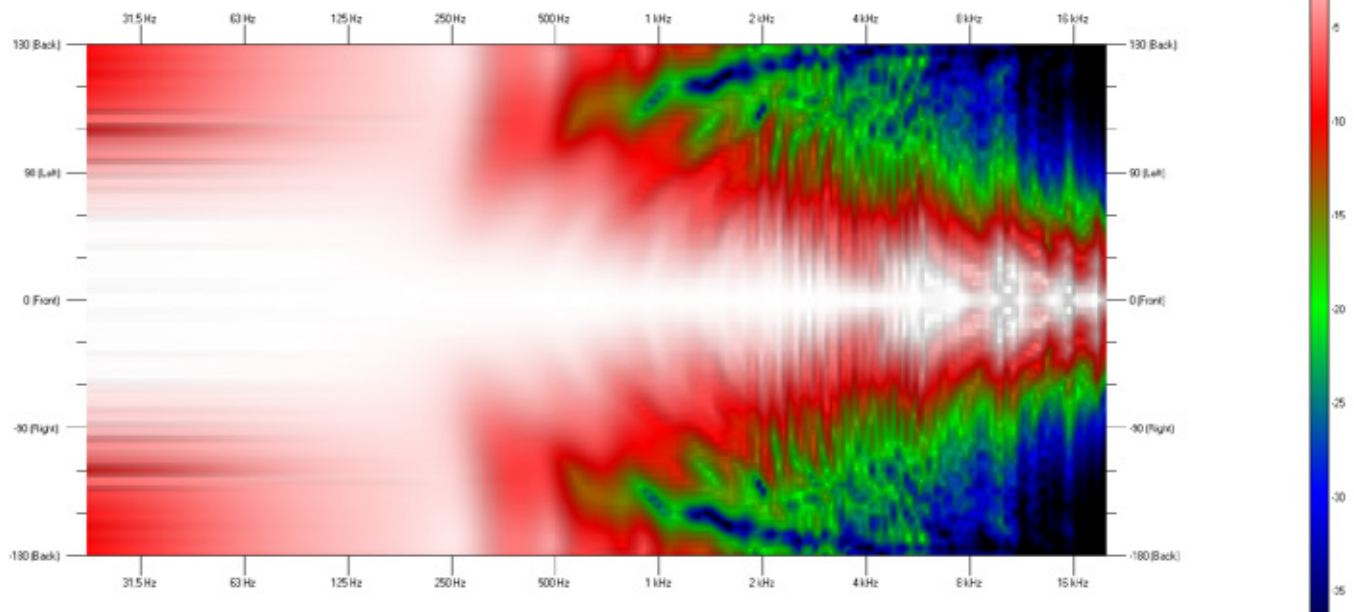


## Frequency response with DSP preset

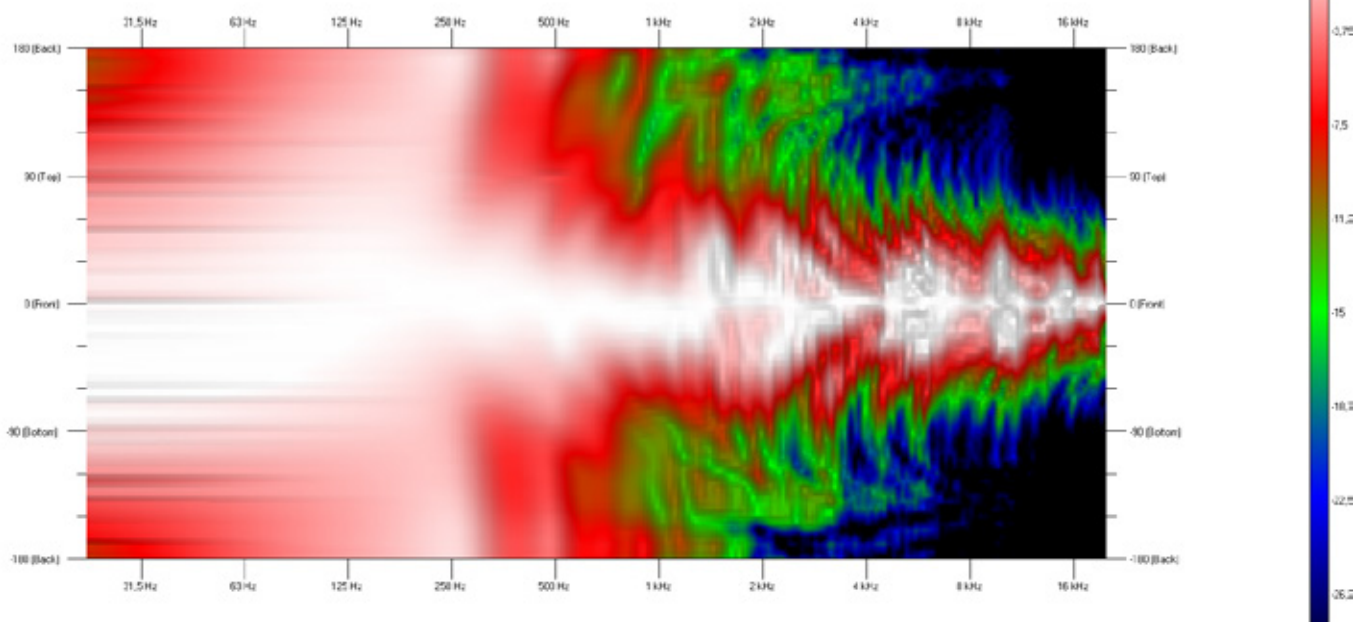




## Horizontal Isobars



## Vertical Isobars



## Accessories



### RAL-Color

Special color per article according to RAL-Color chart.

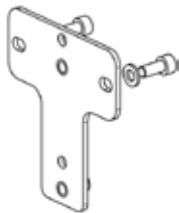
Order number: 1070



### Weather resistant

Impregnation against weather influences

Order number: 40610



### T-mounting adapter 8CXN

For use with wall bracket 24471 when mounted horizontally.

Order number: 900869BLK (black RAL 9005)  
900869W (white RAL 9010)



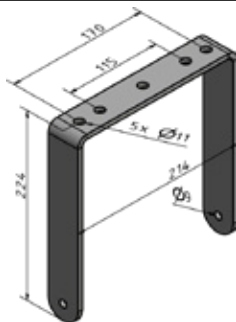
### Wall mount bracket 24471

Wall distance 110 mm, laterally swiveling with inclination up to 30°.

Load capacity: 15 kg

Dimensions (W x H x D): 90 x 160 x 110 mm

Order number: 900851BLK (black RAL 9005)  
900851W (white RAL 9010)



### U-bracket 8CXN

U-bracket for flying on a truss or tilting on a tripod.

Five mounting holes on the top for mounting half-couplers or tripod adapters, incl. 2x M8 knurled screw.

Order number: 908504 (black RAL 9005)

Engineered  
Made  
In Germany



Harmonic Design

*...simply harmonic sound*

**Harmonic Design  
Audiotechnik GmbH**

Rudolf-Diesel-Straße 11  
DE-74382 Neckarwestheim

+ 49 (0) 7133 / 900 8617  
info@harmonic-design.com  
www.harmonic-design.com