



# Clear and brilliant sound hd 181

Resistant and presistant Universal loudspeaker



## hd 181

### Resistant and presistant Universal loudspeaker

The hd 181 is a passive 2-way system equipped with an 8" woofer in a vented design and a 1" neodymium high frequency driver coupled to an elliptical horn. Operation is possible via any power amplifier – even without a DSP – and makes the hd 181 the perfect solution for high-quality mobile or permanently installed public address applications in, for example, industrial events, theaters or sports facilities.

The housing is made of marine plywood and provided with a shock- and weather-resistant polyurethane coating, and a ballproof, elegant and rounded steel grille in black. The hd 181 can be flown safely or tilted on a tripod with the help of the optional U-bracket or simply straight with the integrated tripod mount. For permanent installation, several M8 inlet threads are available for the cost-effective installation of standardized wall brackets. The elliptical horn provides a natural sound without the horn-typical sound coloration, long throw and high speech intelligibility. The frequency- and phase-optimized crossover guarantees a linear transmission behavior.



# hd 181 Datasheet

## Features

- operation with any amplifier
- integrated frequency and phase optimization
- elegant and slim design
- clear mids and brilliant highs
- coverage pattern 80 ° x 60 °
- excellent speech intelligibility
- compact dimensions
- RAL-Colors optional

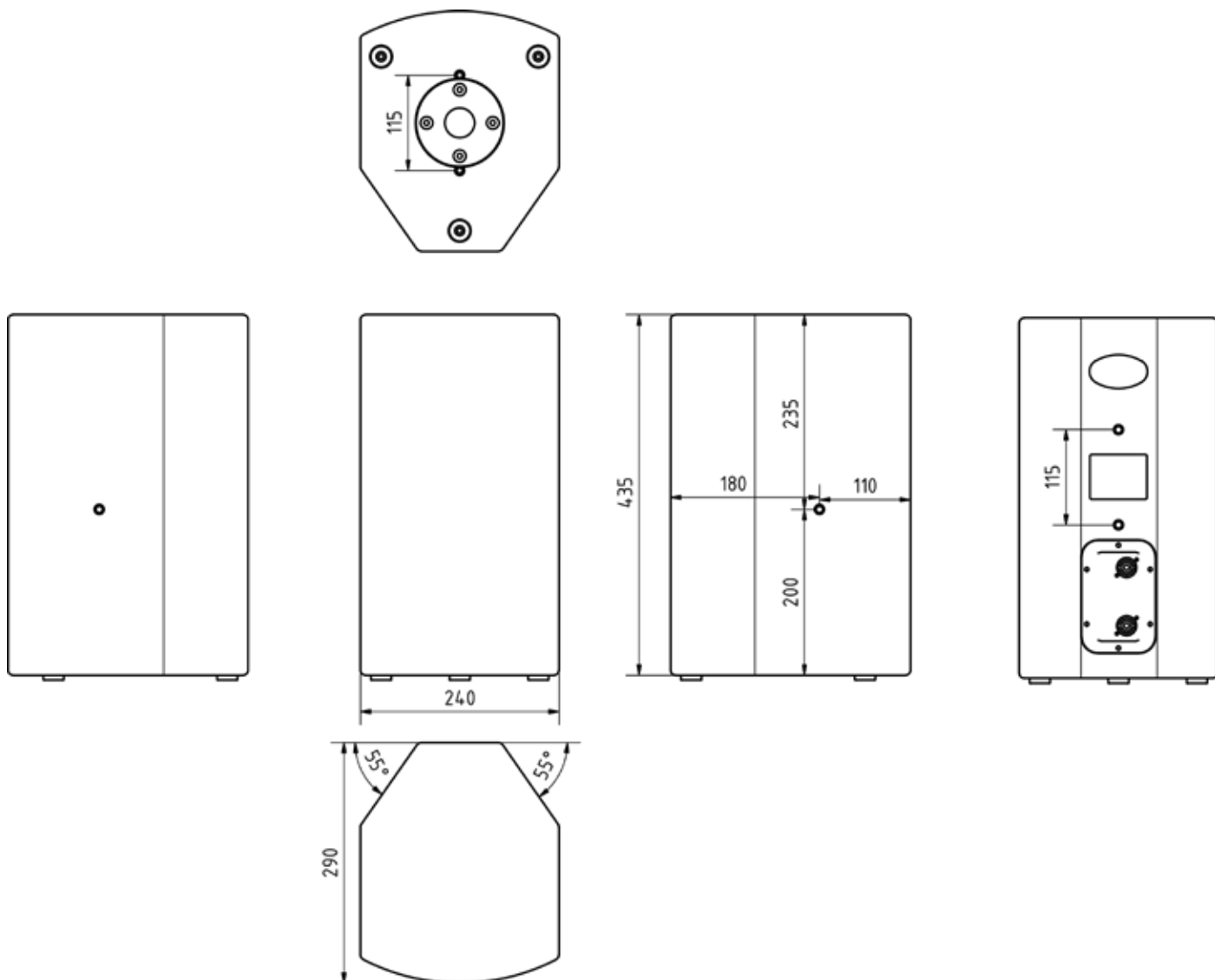
## Applications

Industrial events, theaters, city halls, restaurants, bars, AV installations, TV studios, sports facilities, amusement parks, compact PA

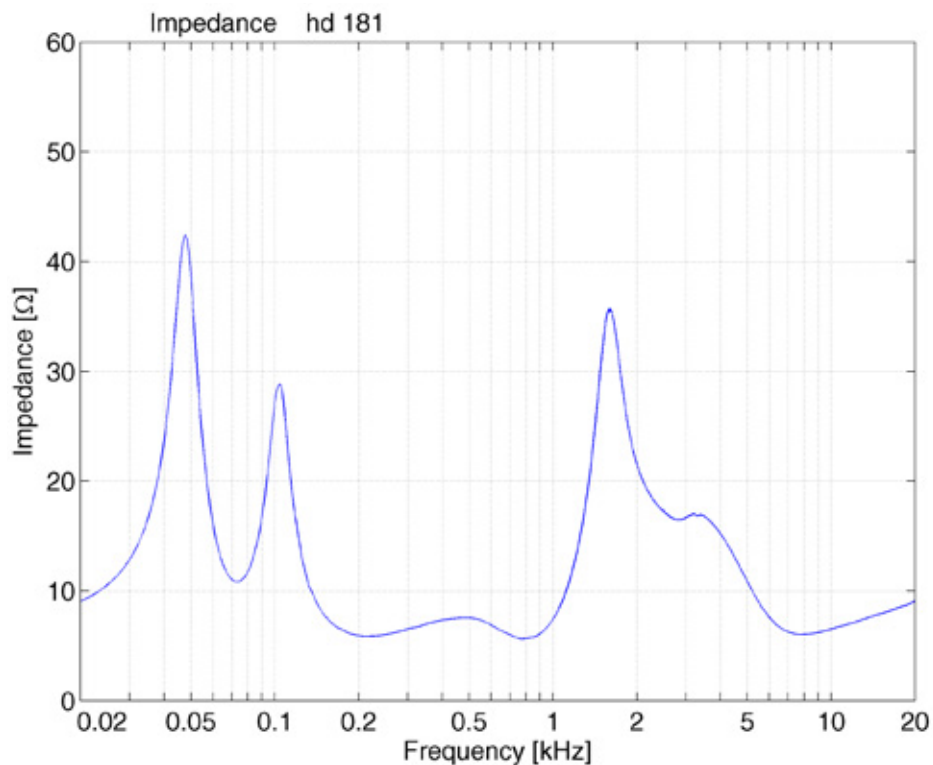
<b>Model</b>	<b>hd 181</b>
<b>Order number</b>	60055
<b>Acoustic design</b>	bass reflex, elliptical horn
<b>Transducers</b>	1x 8"-woofer 1x 1"N-high frequency driver
<b>Impedance</b>	8 Ω
<b>Crossover</b>	1,2 kHz
<b>Coverage (hor x ver)</b>	80° x 60°
<b>Frequency Range (-6 dB)</b>	70 Hz - 22 kHz
<b>Sensitivity (1W / 1m)</b>	95 dB
<b>Power Rating AES / Peak</b>	280 / 800 W
<b>SPLmax @ 10% THD</b>	125 dB
<b>Enclosure</b>	robust multiplex housing with polyurethane coating black, recessed connection panel with 2x NL4, 35 mm flange, carrying handle, steel grille with acoustic foam inside
<b>Optional Accessories</b>	transport cover (Art. 30101), U-Bracket (Art. 908505), wall mount bracket (Art. 900851), mounting adapter (Art. 900866), RAL-Color, weather proof
<b>Weight</b>	12 kg
<b>Dimensions (W x H x D)</b>	245 x 430 x 280 mm

# hd 181 Datasheet

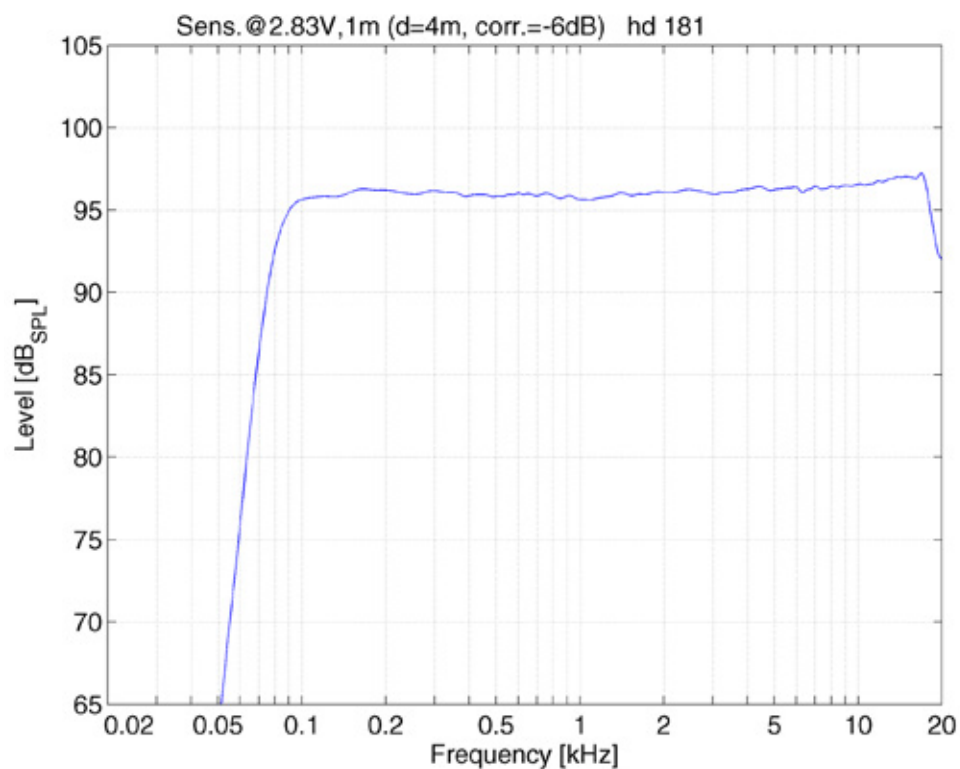
## Dimensions [mm]



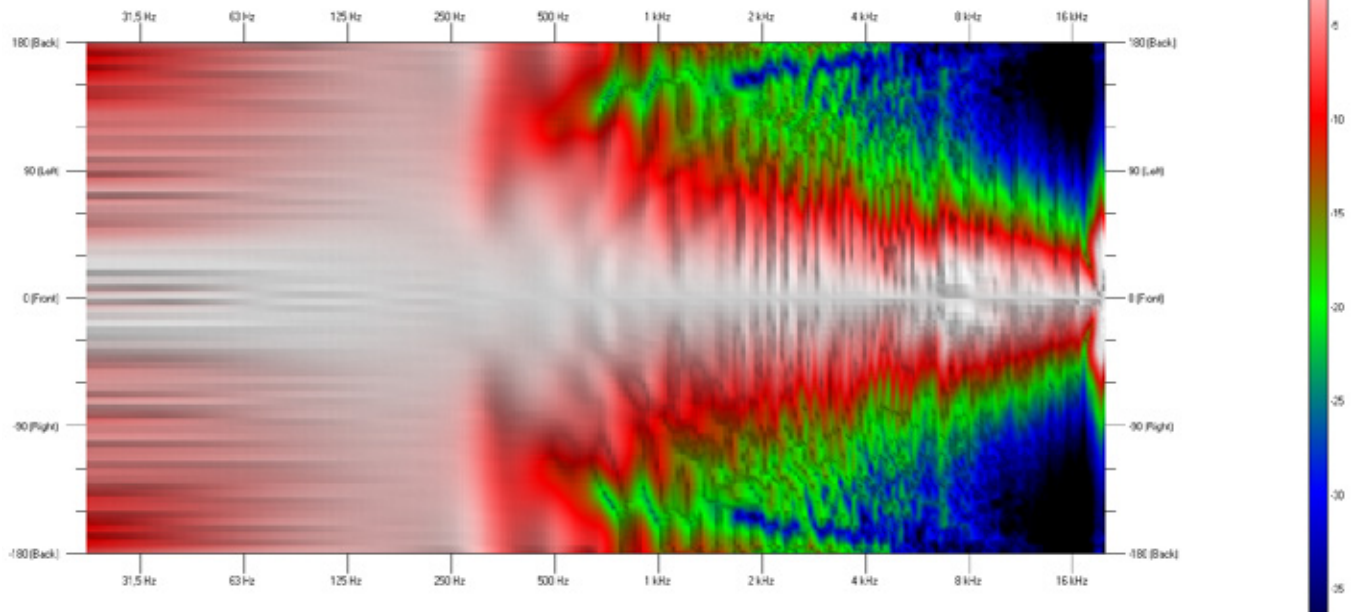
## Impedance



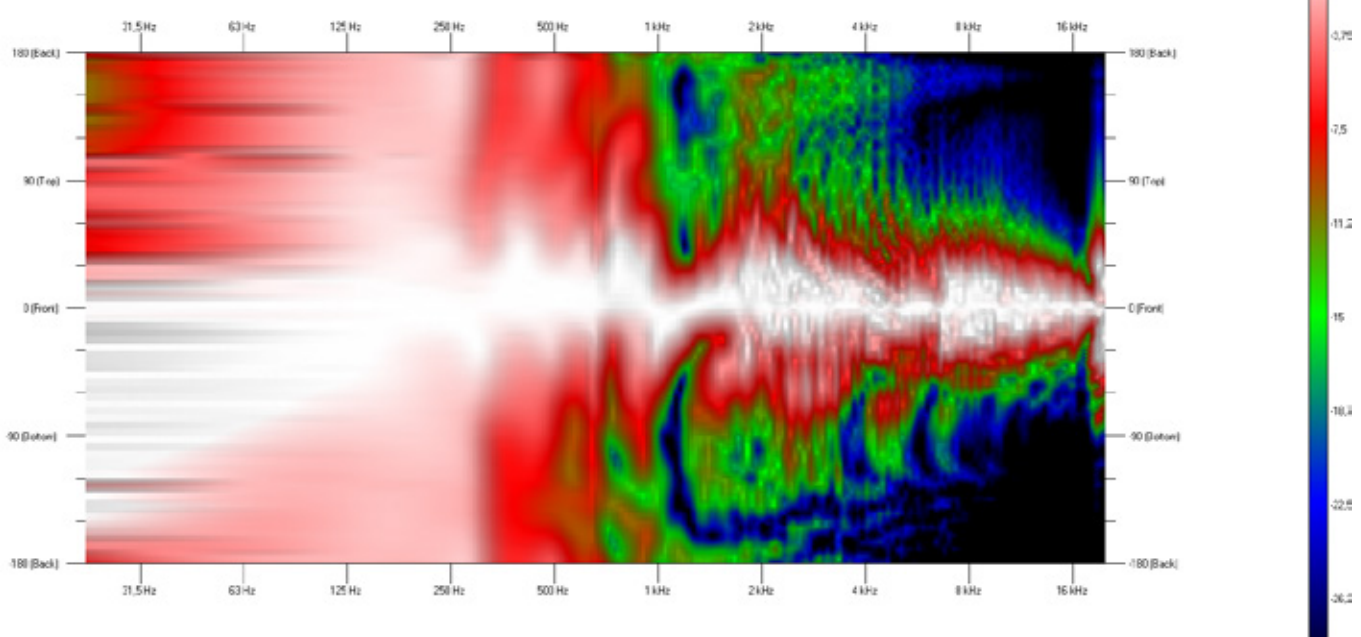
## Frequency response with DSP preset



## Horizontal Isobars



## Vertical Isobars



## Accessories



### RAL-Color

Special color per article according to RAL-Color chart.

Order number: 1070



### Transport cover hd 181

Durable polyester protective cover with 10 mm padding and hd logo imprint.

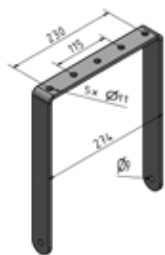
Order number: 30101



### Weather resistant

Impregnation against weather influences.

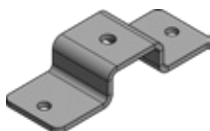
Order number: 40610



### U-Bracket hd 181

U-bracket for flying on a truss or tilting on a tripod. Five mounting holes on the top for mounting half-couplers or tripod adapters, incl. 2x M8 star grip screw.

Order number: 908505 (black RAL 9005)



### Omega mounting adapter half clamp hd 181

For mounting a half clamp.

Order number: 900868 (black RAL 9005)



### Mounting adapter wall holder hd 181

For use with wall bracket 24471.

Order number: 900866BLK (black RAL 9005)

900866W (white RAL 9010)



### Wall mount bracket 24471

Wall distance 110 mm, laterally swiveling with inclination up to 30°.

Load capacity: 15 kg

Dimensions (W x H x D): 90 x 160 x 110 mm

Order number: 900851BLK (black RAL 9005)

900851W (white RAL 9010)

Engineered  
Made  
In Germany



Harmonic Design

*...simply harmonic sound*

**Harmonic Design  
Audiotechnik GmbH**

Rudolf-Diesel-Straße 11  
DE-74382 Neckarwestheim

+ 49 (0) 7133 / 900 8617  
info@harmonic-design.com  
www.harmonic-design.com