



# The benchmark for monitors hd 12CXN

New standards for professional applications



## hd 12CXN

### This coaxial loudspeaker sets new standards for professional applications

The hd 12CXN is a high-performance monitor with a coaxial 12" / 1.4" driver arrangement and well thought-out features. With over 30 years of experience in the practice and development of coaxial chassis, the hd 12CXN has created a new benchmark for professional applications. The newly developed 12" / 1.4" coaxial loudspeaker with double neodymium magnet system and 3" voice coils for low and high frequencies achieves excellent Impulse behavior thanks to the decoupling of both magnet systems. Due to the deep separation at 900 Hz, the hd 12CXN sounds clear and transparent.

The compression driver with a polymer membrane is located in the magnet system of the woofer, and is connected via a BEM-optimized waveguide directly to the cone membrane. As a result, there is no shadowing or reflections caused by an external horn in front of the woofer cone. A conical radiation pattern of 80° is achieved. The large bass reflex port ensures remarkable bass reproduction. An important goal of the development process was that the acoustic performance of our new 12" coaxial driver is comparable to the usual 15" models of the Stage Rider, but with drastically reduced dimensions and only 18 kg in weight. With a total height of less than 30 cm, the low-profile housing can be integrated into any stage design very inconspicuously.

Variably adjustable monitor angles, a recessed tripod sleeve in the handle, flight and mounting points, as well as a switchable connection panel make the hd 12CXN a real all-rounder. The monitor angle of 32° can be adjusted to the stage situation in two steps to 38° or 45° with the integrated, fold-out risers. The back of the housing is bevelled by 17°, so that the drumfill application also focuses on the artist. A flying bracket enables cluster formation and use for fixed installations with low ceilings. The integrated passive crossover can be deactivated on the rear recessed connector panel and the hd 12CXN can be operated as required BI-AMP. The elaborately designed crossover guarantees an accurate and phase-coherent summation of the individual paths including frequency response correction and ensures efficient operation with conventional amplifiers – plug & play – without any additional







corrections required. A recessed switch on the connection panel enables the signal input to be switched from pin 1 + / 1- to 2 + / 2-. With two monitors wired in daisy chain, two AUX feeds can be played out using normal 4-pin cables without the need for a special interchangeable cable, and the tap can be conveniently set on the monitor. In total four four-pin Speakon NL4 connectors are located on each side and rear of the monitor to enable flexible connectivity.

The hd 12CXN unfolds its full potential in combination with an hd system amplifier. An absolutely flat frequency response with linear phase behavior enables an even more natural reproduction behavior and enormous feedback security at all levels. In BI-AMP operating mode and two amplifier channels, the last bit of performance and transparency can be teased out. Customized presets ensure consistency and reliability regardless of where and in what configuration the speaker system is used or combined with hd subwoofer solutions.

# hd 12CXN Datasheet

## Features

- operation on any amplifier possible, hd system amplifier recommended
- frequency and phase optimization integrated
- BI-AMP operation via toggle switch
- coverage 80° x 80°
- installation angle 17° / 32° / 38° / 45°
- elegant design
- low crossover point at 900 Hz
- suitable for full range applications
- compact dimensions
- monitor, FOH or Installed application

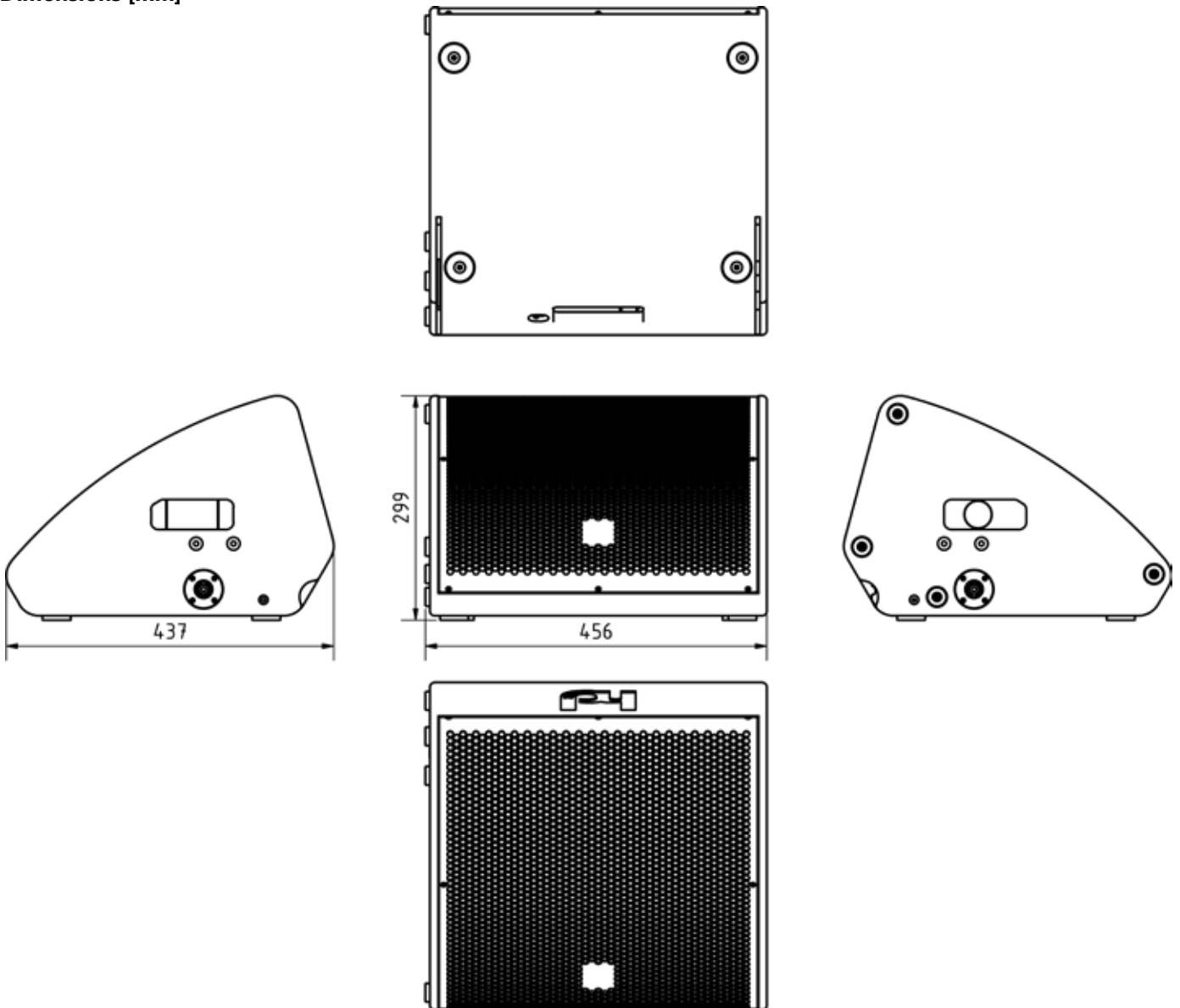
## Application

Touring, industrial events, theaters, town halls, discos, bars, A/V installations, TV studios, sports facilities, amusement parks, compact PA

Model	hd 12CXN
<b>Order number</b>	60052
<b>Acoustic design</b>	Coaxial speaker, bass reflex
<b>Transducers</b>	1x 12"N woofer 1x 1,4"N compression driver
<b>Impedance</b>	passive: 8 Ω   BI-AMP: LF 8 Ω, HF 8 Ω
<b>Crossover</b>	900 Hz
<b>Coverage (hor x ver)</b>	80° x 80°
<b>Frequency range (-6 dB)</b>	55 Hz - 22 kHz
<b>Sensitivity (1W / 1m)</b>	100 dB
<b>Power rating AES / Peak</b>	500 / 2.400 W
<b>SPLmax @ 10% THD</b>	134 dB
<b>Controls</b>	Rocker switch for operating mode (BI-AMP / passive crossover), toggle switch for NL4 pin assignment (1+/1- or 2+/2-)
<b>Enclosure</b>	robust multiplex housing with black polyurethane coating, Ball-proof grille with acoustic foam, recessed connection field, 4x Speakon NL4, M8 inlet thread, 35 mm flange
<b>Installation angle</b>	17°, 32°, 38°, 45°
<b>Options</b>	Transport cover, TourCase, U-Bracket, RAL-Color (Art. 1071), weatherproof (Art. 40610)
<b>Weight</b>	18 kg
<b>Dimensions (W x H x D)</b>	450 x 298 x 437 mm

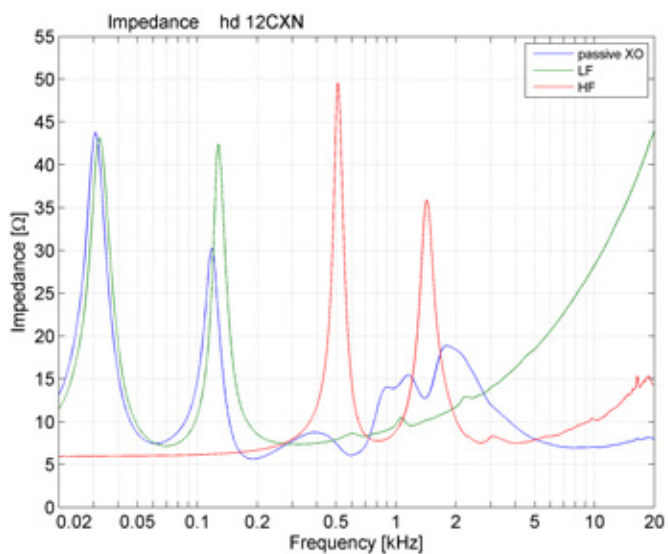
# hd 12CXN Datasheet

## Dimensions [mm]

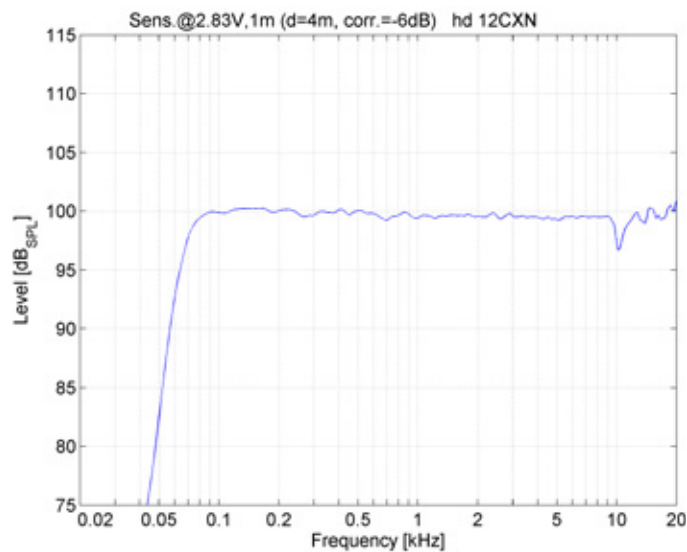


# hd 12CXN Datasheet

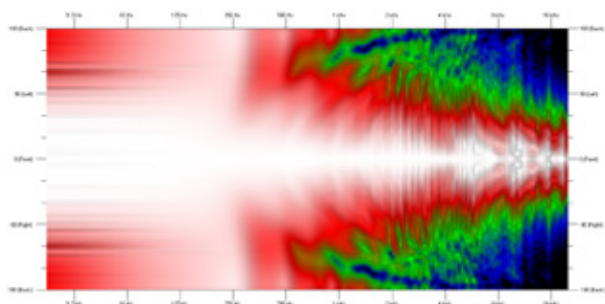
## Impedance



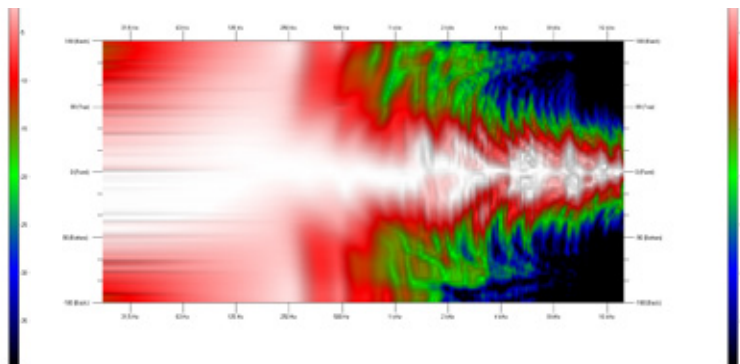
## Frequency response with DSP preset



## Horizontal Isobars



## Verticale Isobars



# hd 12CXN Datasheet

## Accessories



### RAL-Color

Special color per article according to RAL-Color.

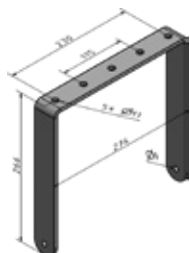
Order number: 1070



### Weather resistant

Impregnation against weather influences

Order number: 4610



### U-Bracket hd 12CXN

U-bracket for flying on a truss or tilting on a tripod. Five mounting holes on the top for mounting half-couplers or tripod adapters, includes 2x M8 knurled screws.

Order number: 908508 (black RAL 9005)



### Transport cover hd 12CXN

Durable transport protective cover made of polyester with 10 mm padding and hd logo print.

Order number: 30123



### TourCase hd 12CXN

Double case for two hd 12CXN with 8x folding handles (2x on each side) and 4x 100 mm wheels.

Order number: 950062

Engineered  
Made  
In Germany



Harmonic Design

*...simply harmonic sound*

**Harmonic Design  
Audiotechnik GmbH**

Rudolf-Diesel-Straße 11  
DE-74382 Neckarwestheim

+ 49 (0) 7133 / 900 8617  
info@harmonic-design.com  
www.harmonic-design.com