

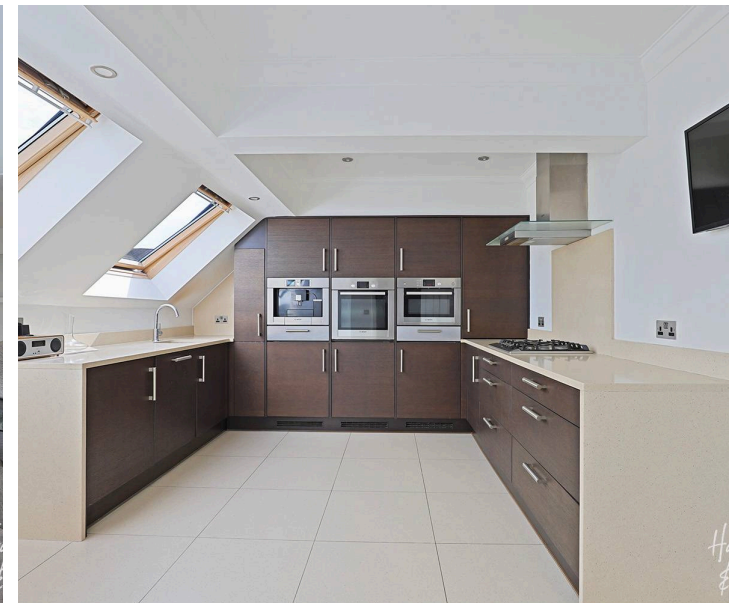
# Flat 9

Alexander Court Crows Road, Epping

Council Tax band: F

Tenure: Leasehold

- Three bedroom first floor spacious apartment
- Allocated gated parking
- Moments from Epping high street
- Beautiful neutral interiors throughout
- Short walk to Epping station
- Ensuite bathroom with separate shower





**Living Room**

20' 9" x 16' 2" (6.32m x 4.93m)

**Kitchen / Diner**

16' 2" x 11' 6" (4.94m x 3.50m)

**Primary Bedroom**

16' 8" x 13' 8" (5.09m x 4.17m)

**Ensuite bathroom**

10' 6" x 6' 0" (3.21m x 1.83m)

**Bedroom**

13' 4" x 10' 11" (4.06m x 3.34m)

**Bedroom**

8' 7" x 5' 9" (2.62m x 1.75m)

**Bathroom**

8' 7" x 6' 6" (2.62m x 1.98m)

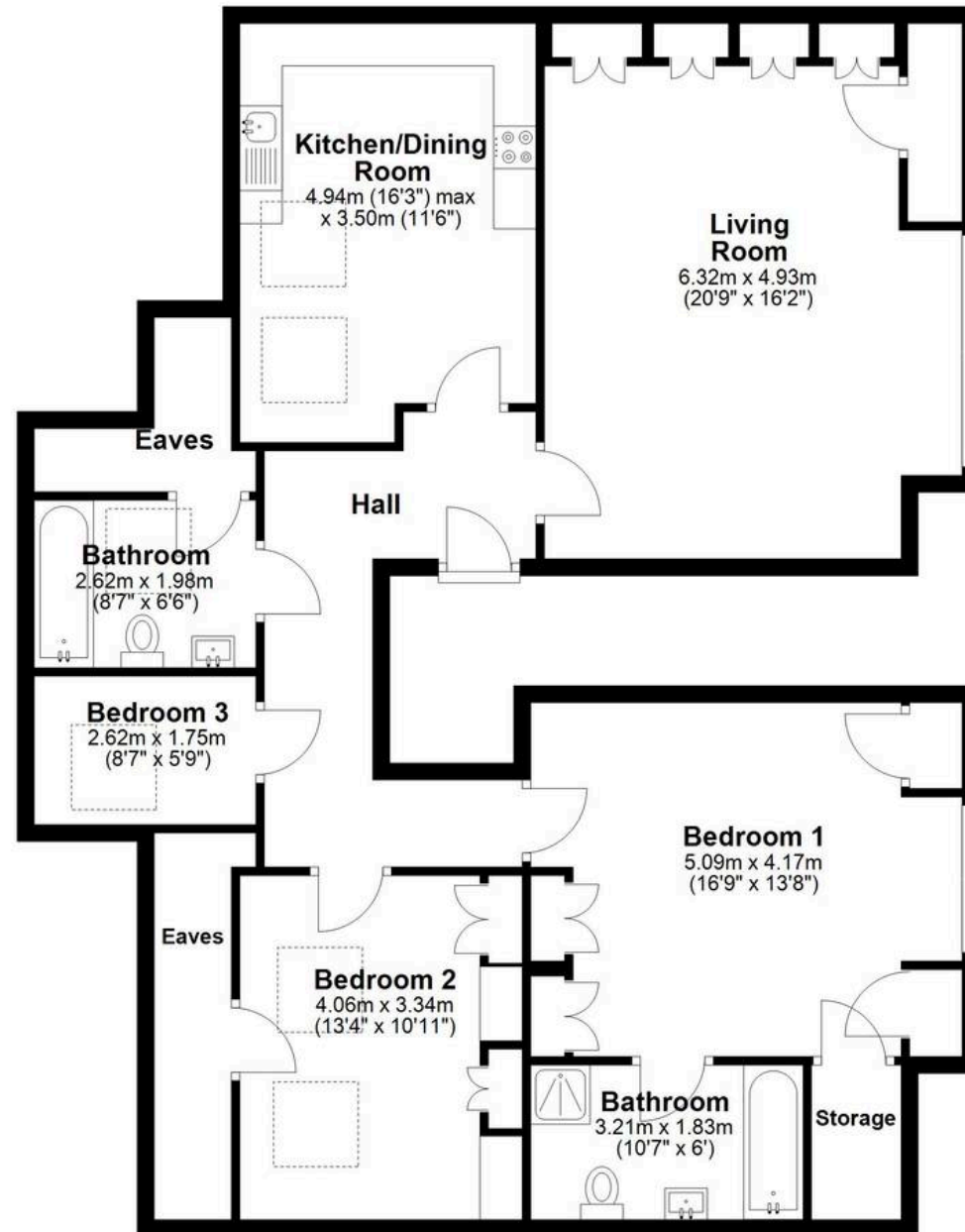






## Second Floor

Main area: approx. 113.7 sq. metres (1223.4 sq. feet)  
Plus eaves, approx. 7.3 sq. metres (79.0 sq. feet)



Main area: Approx. 113.7 sq. metres (1223.4 sq. feet)  
Plus eaves, approx. 7.3 sq. metres (79.0 sq. feet)